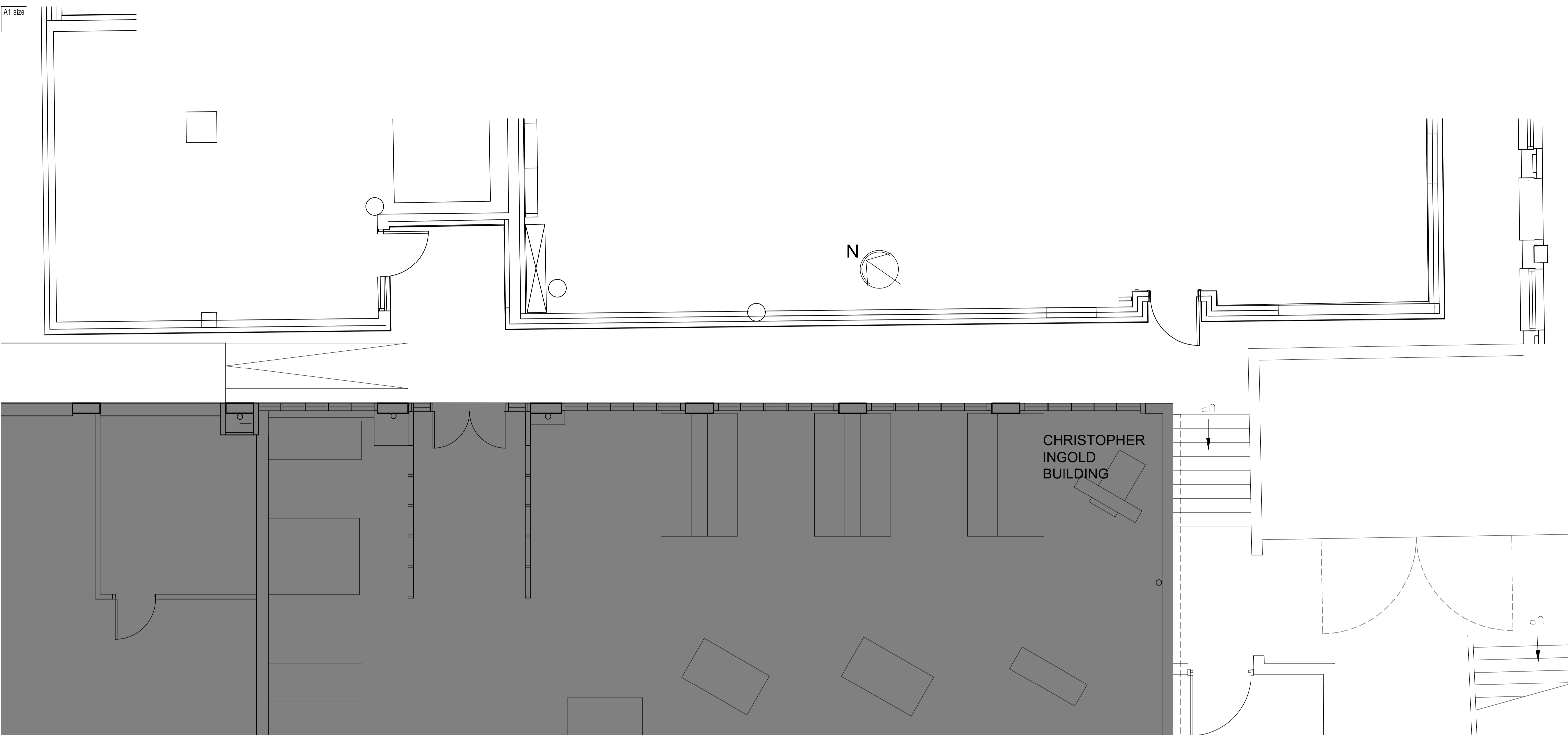
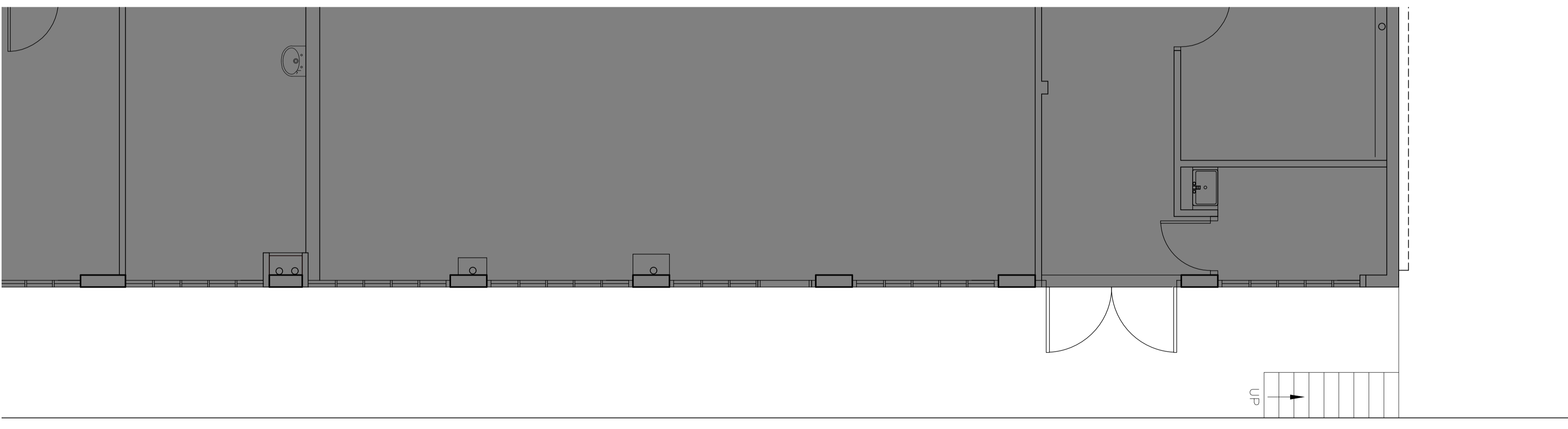


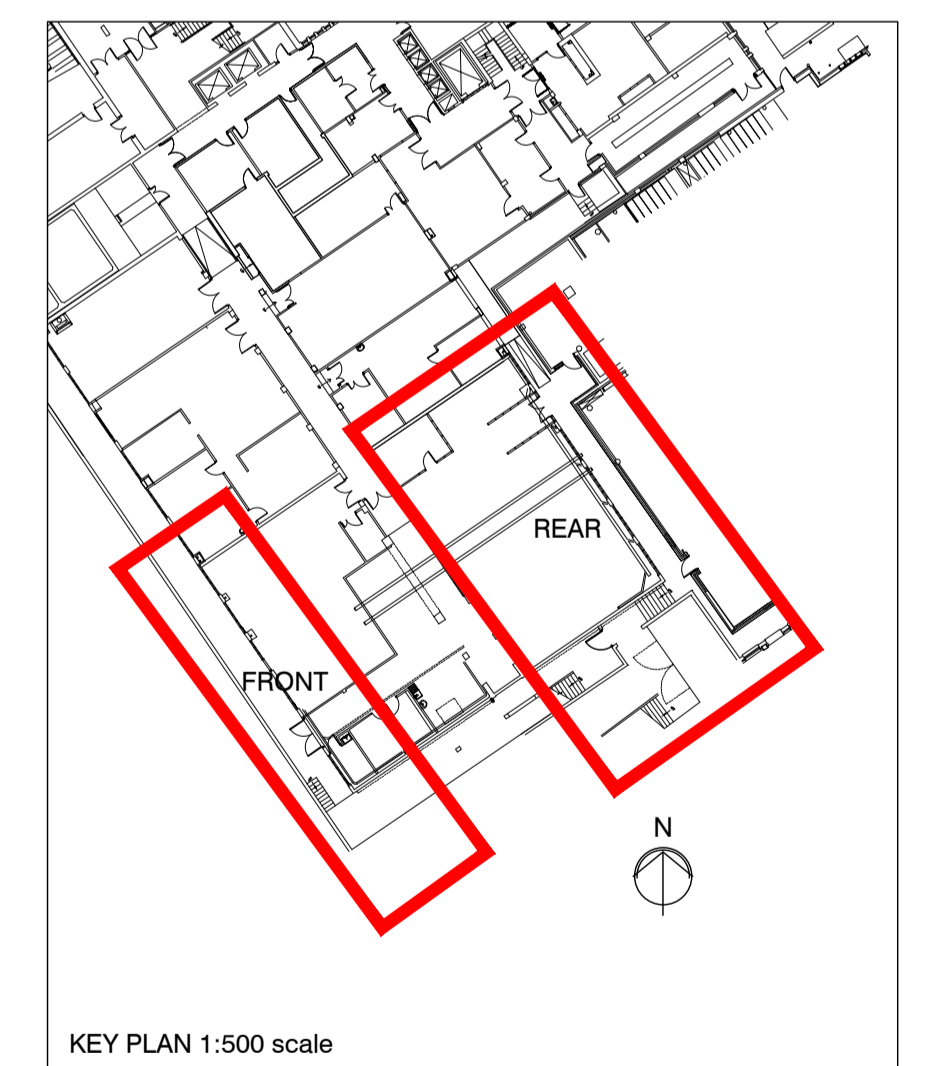
A1 size



REAR PART PLAN 1:50 scale



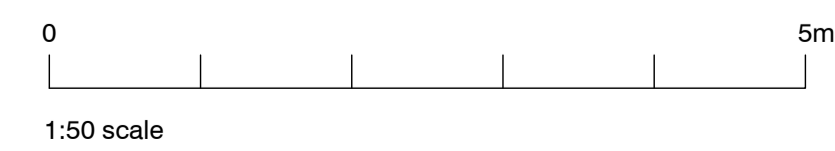
FRONT PART PLAN to Gordon Street side 1:50 scale



KEY PLAN 1:500 scale

rev: -- by: rp date: 2019-06-06 chk: -
 Initial issue

This drawing is to be read in conjunction with all relevant consultants' and specialists' drawings. Notify the Contract Administrator of any discrepancies before proceeding. Do not scale from this drawing. All dimensions are to be checked on site. This drawing is subject to copyright.



WILSON MASON

Wilson Mason LLP - Chartered Architects
 8, New Concordia Wharf, Mill Street, London SE1 2BB
 T 020 7637 1501 - www.wilsonmason.co.uk

client University College London
 project BEAMS MAPS, Christopher Ingold Building

drawing Lower Ground Floor Existing
 1:50, 1:500 at a1

Planning	6780 - L(00)008	rev --
----------	-----------------	--------