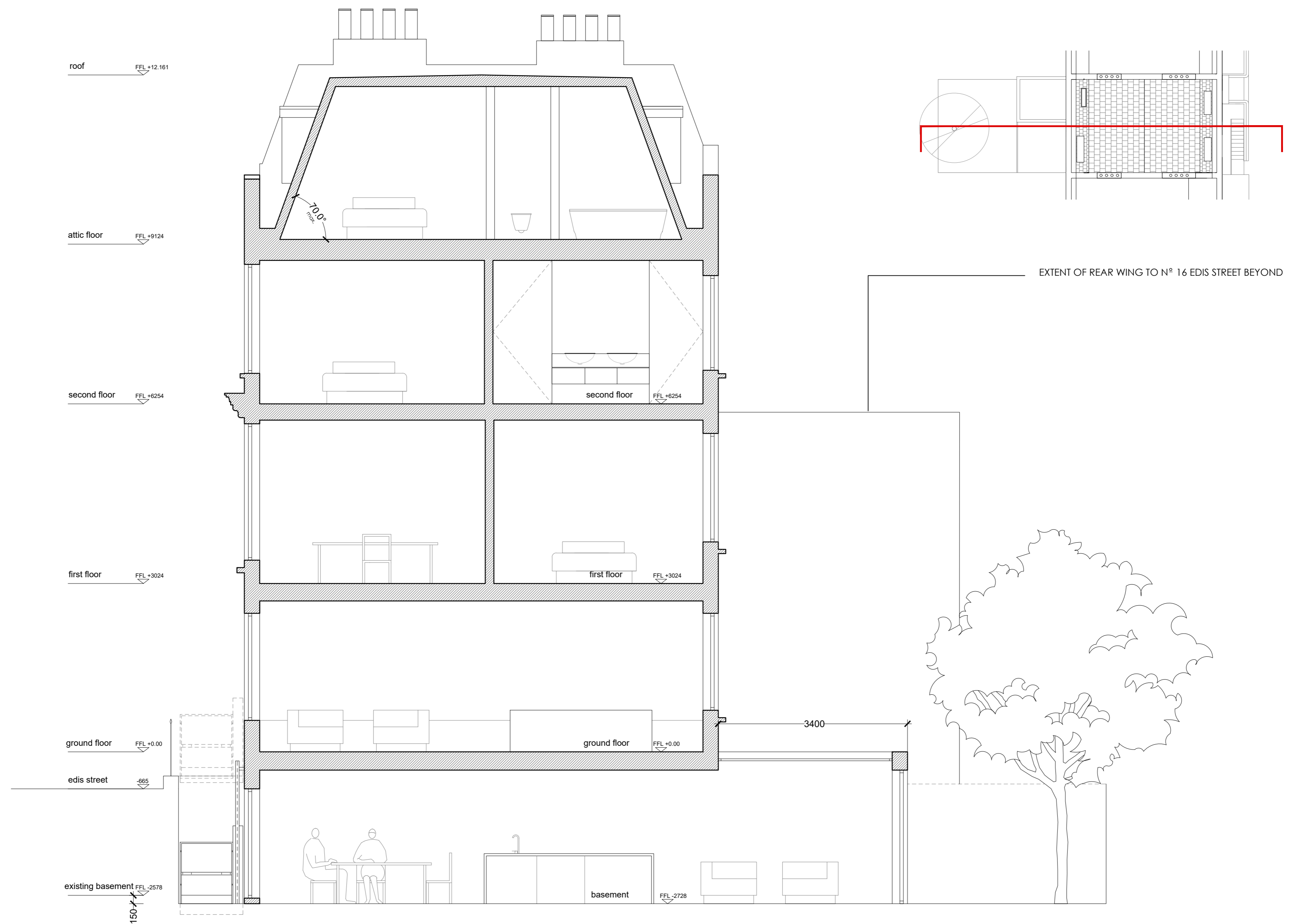


NOTES
 DO NOT SCALE FROM THIS DRAWING
CONSENTED SCHEME
 NOTE:
 REF: 2016/7041P & 2019/1866P



EXTENT OF REAR WING TO N^o 16 EDIS STREET BEYOND

Martin Evans
 Architects o
 18 Charlotte Road
 London EC2A 3PB
 tel 020 7729 2474

JOB
 17, EDIS STREET
 NW1 8LE
 LONDON

TITLE
 SECTION AA AS CONSENTED SCHEME

DATE	27.06.2019
SCALE	1:50 @ A3
DRAWN	C.F.

DRAWING NO. EDI-CONSENT-GA-09