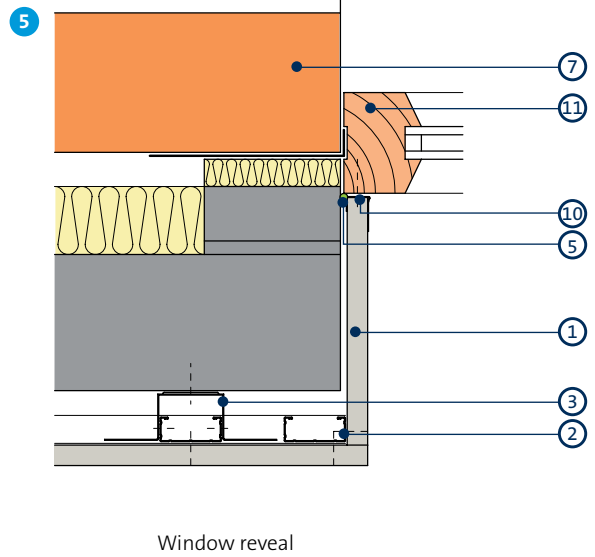
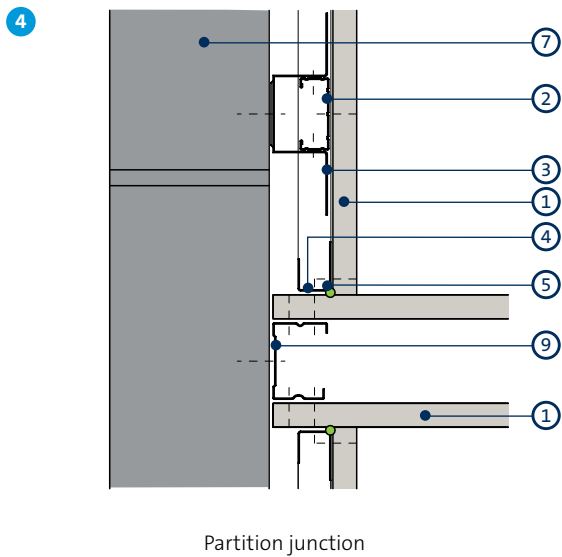
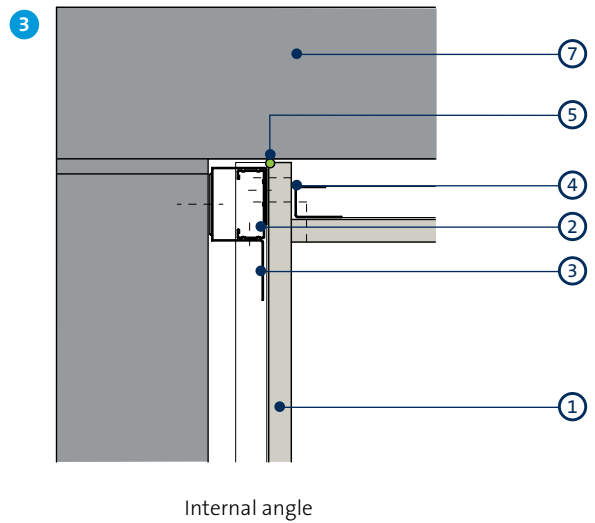
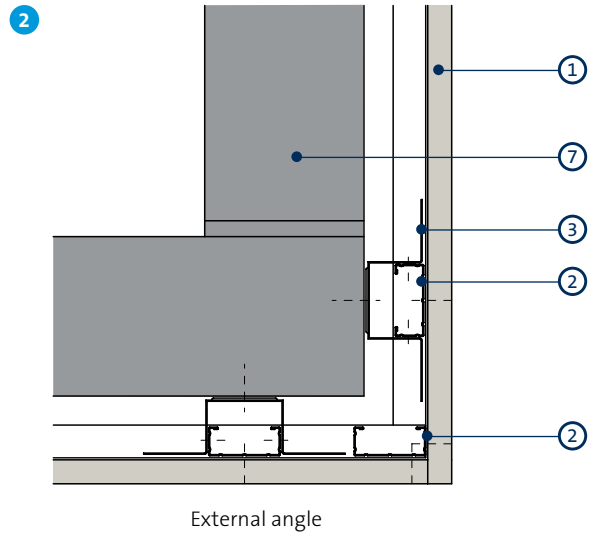
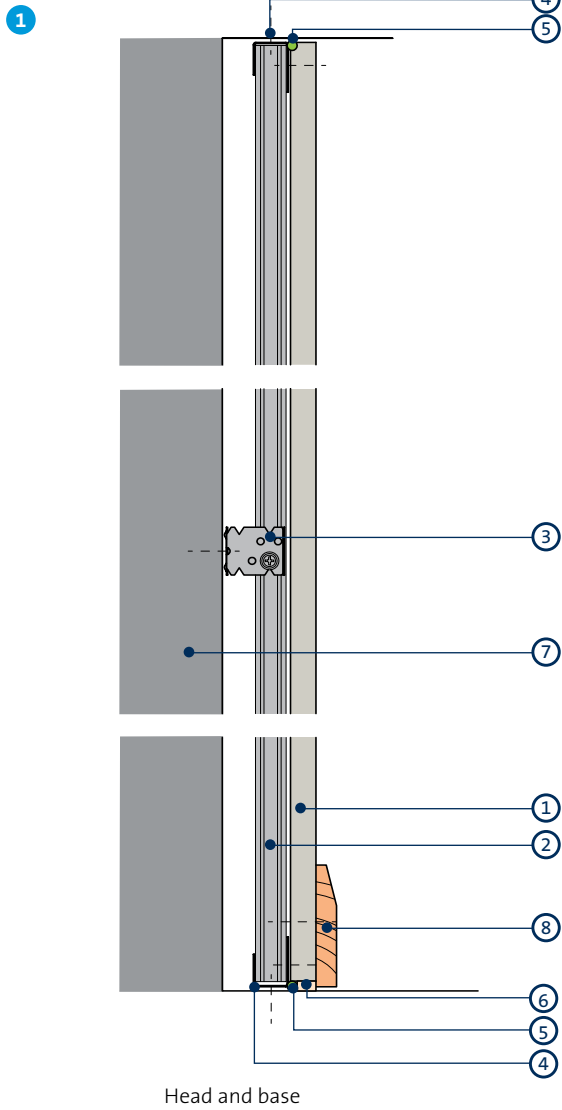


Gyplyner UNIVERSAL construction details



- 1 Gyproc plasterboard
- 2 Cypframe GL1 Lining Channel
- 3 Cypframe GL2 or GL9 Bracket fixed with Cypframe GL11 GypLyner Anchor
- 4 Cypframe GL8 Track
- 5 Gyproc Sealant
- 6 Bulk fill with Gyproc jointing materials (where gap exceeds 5mm)
- 7 Wall structure
- 8 Skirting
- 9 Gypframe 'C' Stud
- 10 Gyproc Drywall Edge Bead
- 11 Window frame