

DELIVERY DATE (Where applicable)
SEE PROGRAMME

NOTES

- 70mm metal/timber partitions to be faced with either 12mm plywood or 12.5mm plasterboard as noted - see key below
- 12.5mm plasterboard
 - 12mm plywood

Revision	Description	Date	23-10-13
D	AS BUILT DRAWING		
DR			
Revision	Description	Date	24-07-13
C	TABLE ADDED SHOWING SIZES OF OPENINGS TO BE FORMED ON SITE.		
DR			
Revision	Description	Date	22-07-13
B	DETAILS AMENDED TO COMMENTS RECEIVED FROM LAURE 19-7-13. UNEVEN FLOOR NOTED IN HEIGHT SECTION ISSUED FOR CONSTRUCTION.		
DR			
Revision	Description	Date	19-07-13
A	NOTES ADDED, PARTITION KEY ADDED. FRAMING ADDED & 1-5 HEIGHT SECTION ISSUED FOR CONSTRUCTION.		
DR			

AS BUILT

J CREW

J CREW

38 Lambs Conduit Street
LONDON

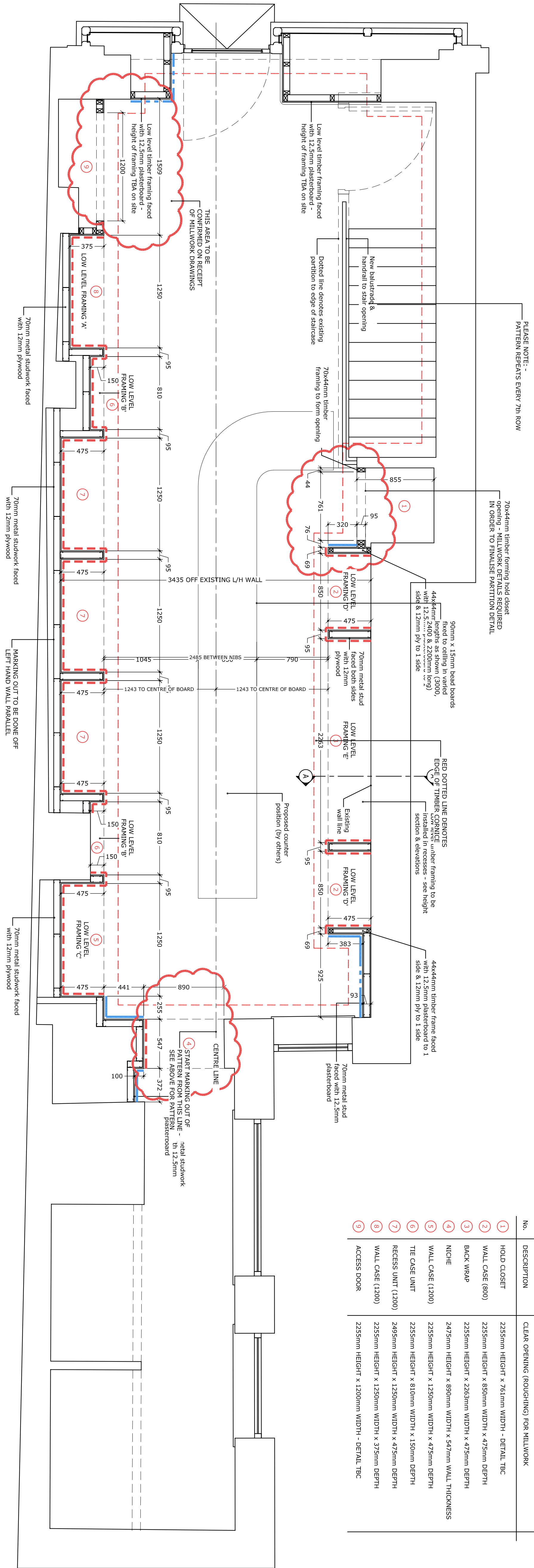
GROUND FLOOR PARTITION LAYOUT

Scale	DWG No.	Drawn	Checked
1-25 @ A1	6466-02	DR	BIL
Date	AutoCAD File Ref	Revision	
12-07-13	6466-02D	D	

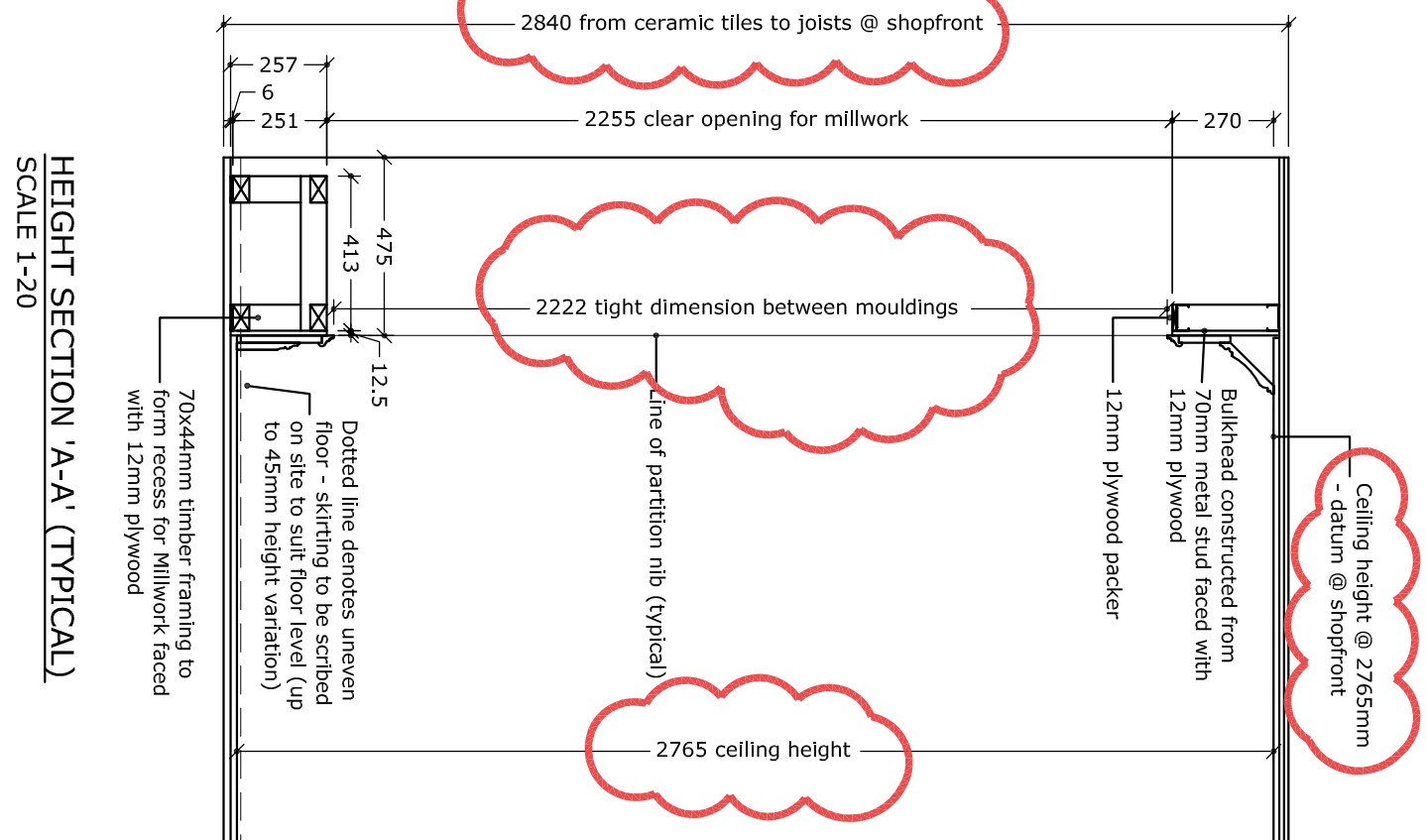
PLEASE NOTE THAT NO ALTERATIONS MAY BE MADE TO THE METHOD OF MANUFACTURE. MATERIALS SPECIFIED OR DIMENSIONS SHOWN ON THIS DRAWING WITHOUT PRIOR WRITTEN CONSENT OF BRIDGFORD INTERIORS LTD WILL BE INCURRED DUE TO UNCONFERRED ALTERATIONS THE MANUFACTURER MAY BE LIABLE.



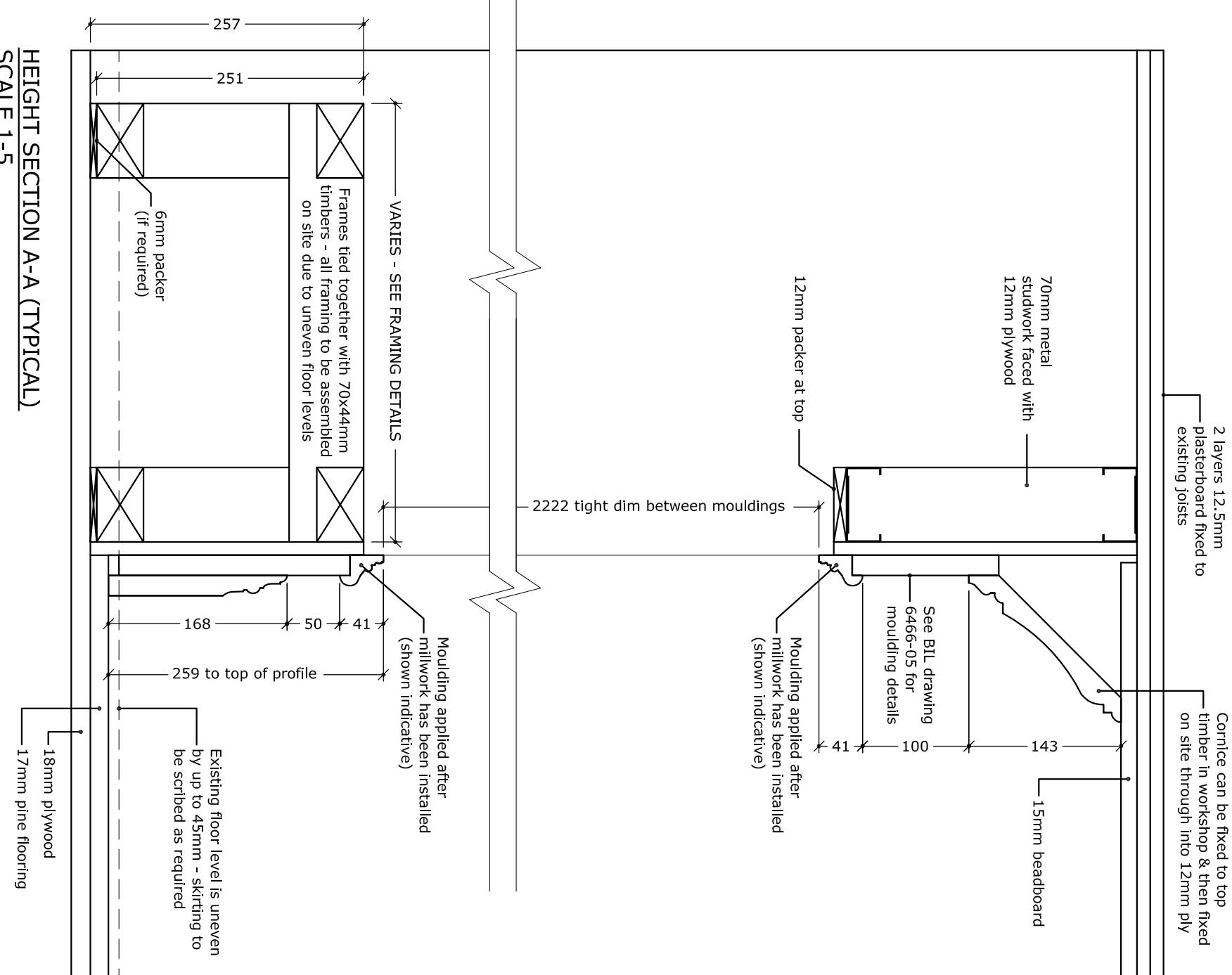
No.	DESCRIPTION	CLEAR OPENING (ROUGHING) FOR MILLWORK
1	HOLD CLOSET	2255mm HEIGHT x 761mm WIDTH - DETAIL TBC
2	WALL CASE (800)	2255mm HEIGHT x 850mm WIDTH x 475mm DEPTH
3	BACK W/6AP	2255mm HEIGHT x 2253mm WIDTH x 475mm DEPTH
4	NICHE	2475mm HEIGHT x 890mm WIDTH x 547mm WALL THICKNESS
5	WALL CASE (1200)	2255mm HEIGHT x 1250mm WIDTH x 475mm DEPTH
6	TIE CASE UNIT	2255mm HEIGHT x 810mm WIDTH x 150mm DEPTH
7	RECESS UNIT (1200)	2495mm HEIGHT x 1250mm WIDTH x 475mm DEPTH
8	WALL CASE (1200)	2255mm HEIGHT x 1250mm WIDTH x 375mm DEPTH
9	ACCESS DOOR	2255mm HEIGHT x 1200mm WIDTH - DETAIL TBC



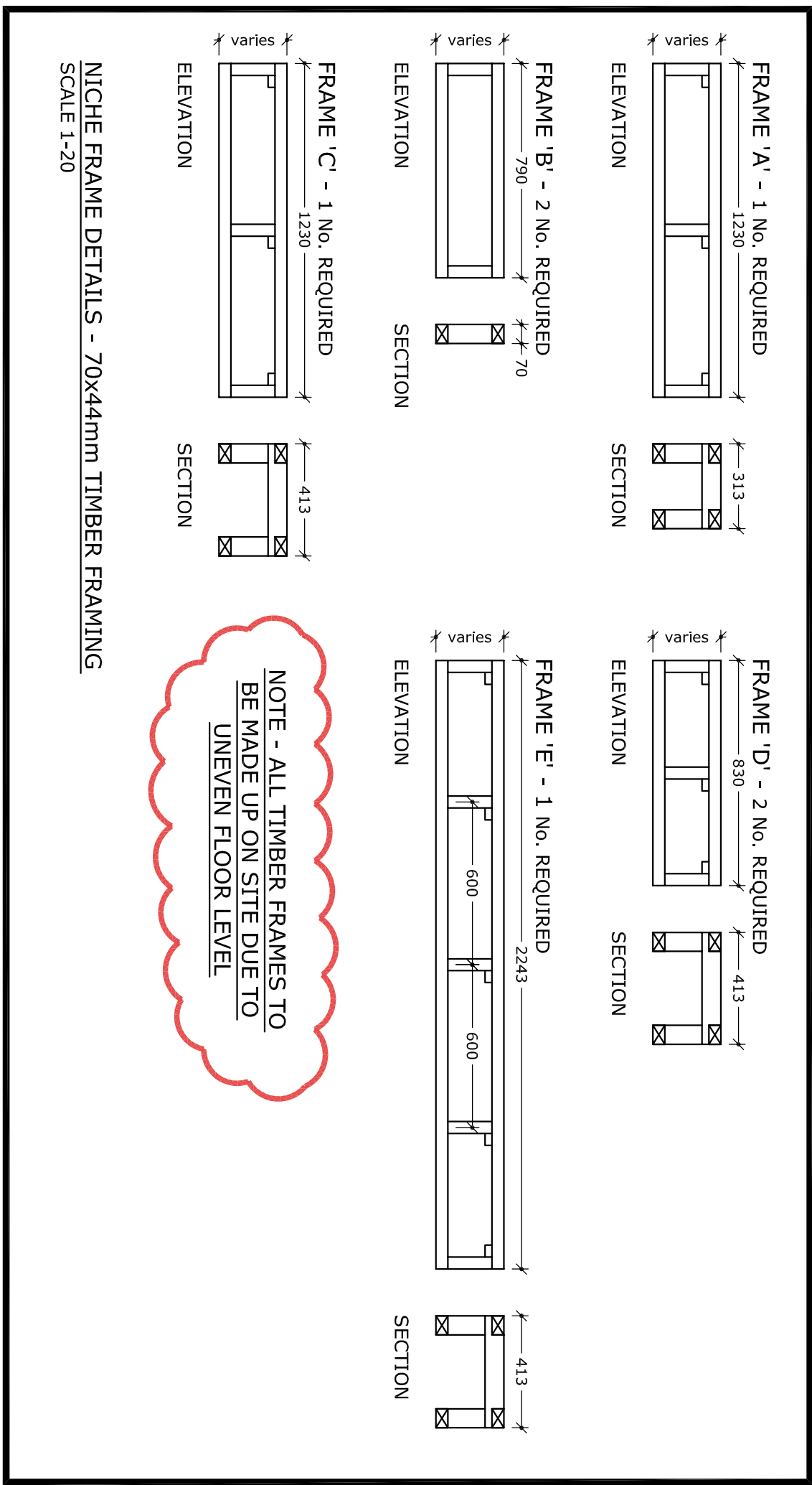
GROUND FLOOR PARTITION LAYOUT
SCALE 1:25



HEIGHT SECTION A-A (TYPICAL)
SCALE 1:20



HEIGHT SECTION A-A (TYPICAL)
SCALE 1:5



NICHE FRAME DETAILS - 70x44mm TIMBER FRAMING
SCALE 1:20