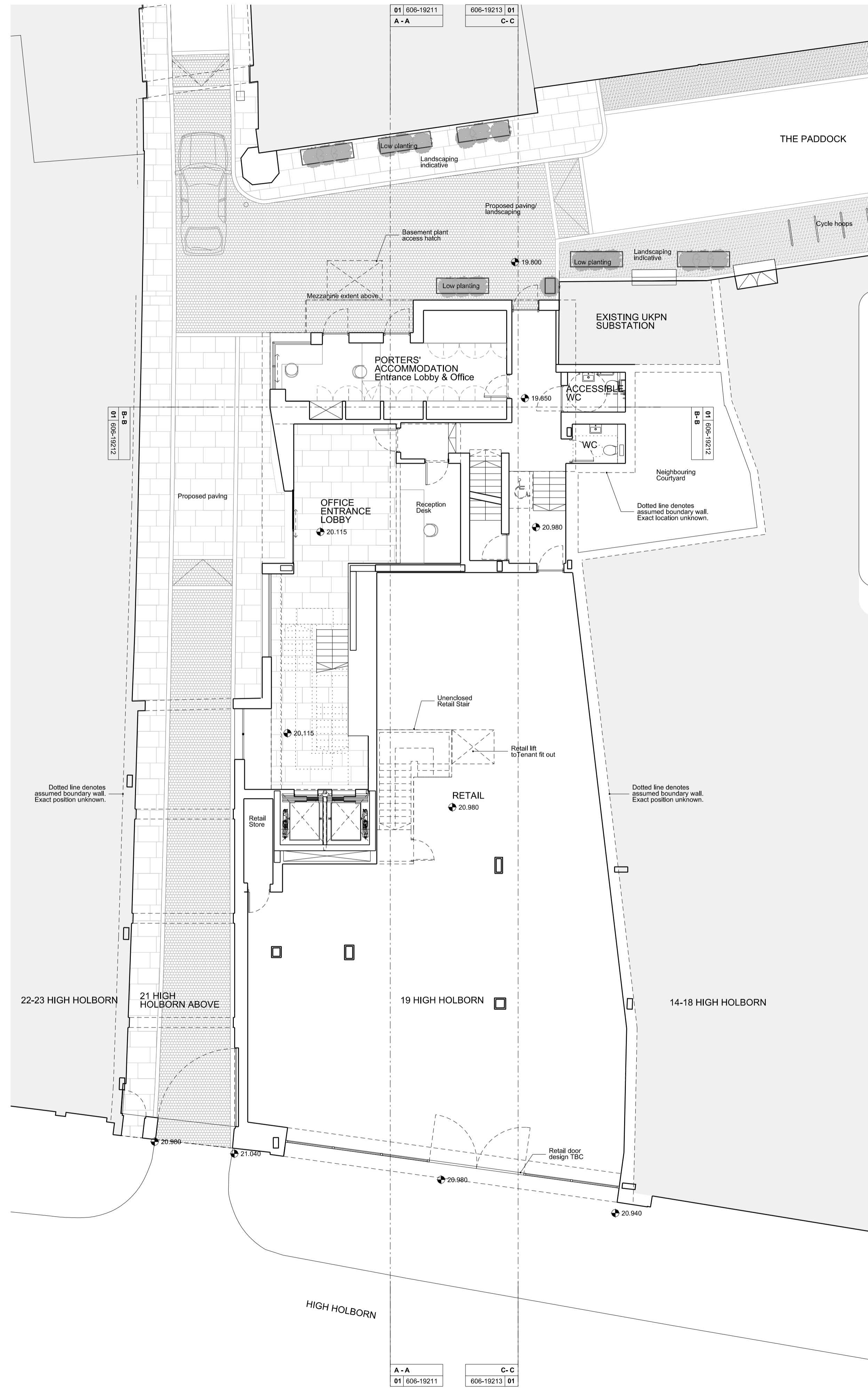
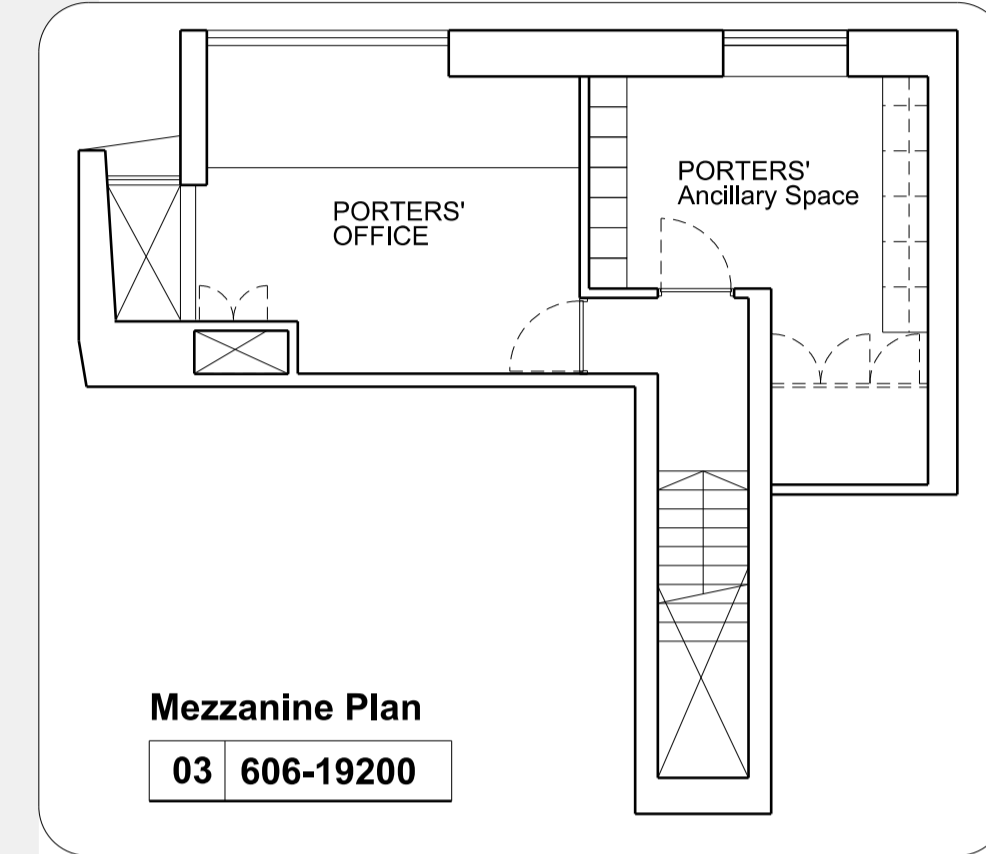


**Basement Plan**  
01 606-19200



**Ground Floor Plan**  
02 606-19200



**Mezzanine Plan**  
03 606-19200

NOTES  
DO NOT SCALE FROM THIS DRAWING.  
CONTRACTOR TO CHECK ALL DIMENSIONS ON SITE.  
ANY DISCREPANCIES TO BE REPORTED TO THE ARCHITECT IMMEDIATELY.

COPYRIGHT RICK MATHER ARCHITECTS LLP ©

**SUMMARY OF AMENDMENTS:**  
14-18 High Holborn:  
The proposed brick slip cladding has been replaced with a stone plinth and a high level stucco render finish to the UKPN substation & Ground Floor facade of 14-18 High Holborn upto line of proposed cycle enclosure. The stone plinth & render will match the adjacent plinth & render finish at the High Holborn entrance archway.  
21 High Holborn:  
Introduction of stone keystone over High Holborn entrance archway.  
Keystone will be transcribed with treasurers initials & dates.  
Landscape:  
Updated to reflect general external landscape arrangement defined in Clearance of Condition 8 submission.

REVISIONS	PL4	10/07/19	NON-MATERIAL AMENDMENTS / LISTED BUILDING
PL3	27/02/19	NON-MATERIAL AMENDMENTS / LISTED BUILDING	
PL2	22/06/18	ISSUED FOR NON-MATERIAL AMENDMENTS	
PL1	25.11.16	ISSUED FOR PLANNING	
REV	DATE	DESCRIPTION	

KEY PLAN

STATUS

**PLANNING**

**RICK MATHER ARCHITECTS ©**  
123 Camden High Street London NW1 7JR  
T: 020 7284 1727 F: 020 7287 7626  
info@rickmather.com www.rickmather.com

JOB  
**THE HONOURABLE SOCIETY OF GRAY'S INN**  
19-21 HIGH HOLBORN

TITLE  
**PROPOSED**  
GA FLOOR PLAN  
BASEMENT, GROUND FLOOR + MEZZANINE

DRAWN	ME	JOB #	606	DRG #	19200	REV	PL4
CHECKED	TP	SCALE@A1	1:100	SIZE	A1	DATE	NOV 16
		SCALE@A3	1:200	SIZE	A3	REV/DATE	10/07/19