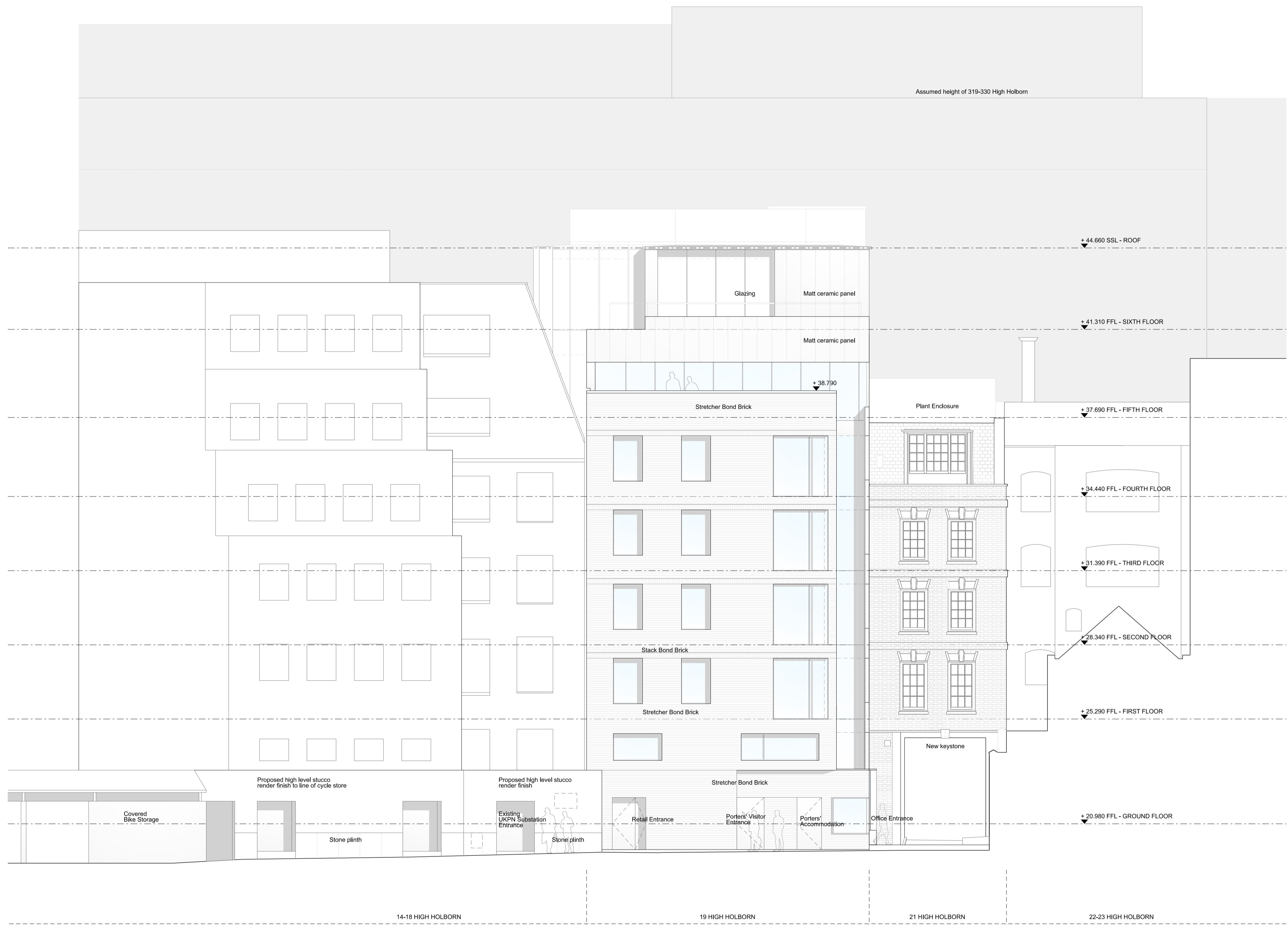


NOTES
 DO NOT SCALE FROM THIS DRAWING.
 CONTRACTOR TO CHECK ALL DIMENSIONS ON SITE.
 ANY DISCREPANCIES TO BE REPORTED TO THE ARCHITECT IMMEDIATELY.
 COPYRIGHT RICK MATHER ARCHITECTS LLP ©

SUMMARY OF AMENDMENTS:
 14-18 High Holborn:
 The proposed brick slip cladding has been replaced with a stone plinth and a high level stucco render finish to the UKPN substation & Ground Floor facade of 14-18 High Holborn upto line of proposed cycle enclosure. The stone plinth & render will match the adjacent plinth & render finish at the High Holborn entrance archway.
 21 High Holborn:
 Introduction of stone keystone over High Holborn entrance archway.
 Keystone will be transcribed with treasurers initials & dates.
 Landscape:
 Updated to reflect general external landscape arrangement defined in Clearance of Condition 8 submission.



REVISIONS	PL4	10/07/19	NON-MATERIAL AMENDMENTS / LISTED BUILDING
	PL3	27/02/19	NON-MATERIAL AMENDMENTS / LISTED BUILDING
	PL2	23/06/18	ISSUED FOR NON-MATERIAL AMENDMENTS
	PL1	28/11/16	ISSUED FOR PLANNING
REV	DATE	DESCRIPTION	



STATUS
PLANNING

RICK MATHER ARCHITECTS ©
 123 Camden High Street London NW1 7JR
 T: 020 7284 1727 F: 020 7287 7626
 info@rickmather.com www.rickmather.com

JOB
THE HONOURABLE SOCIETY OF GRAY'S INN
 19-21 HIGH HOLBORN

TITLE
PROPOSED
 NORTH ELEVATION

DRAWN	ME	JOB #	606	DRG #	19223	REV	PL4
CHECKED	TP	SCALE@A1	1:100	SIZE	A1	DATE	NOV 16
		SCALE@A3	1:200	SIZE	A3	REV DATE	10/07/19

North Elevation
 01 606-19223