

Detailed Planting Plan

KEY

Existing retained trees

Proposed ornamental shrub planting

Proposed climbers

Proposed specimen shrubs

Proposed amenity grass turf.
(Rolawn medallion turf to BS3969)

Paving. 600 x 600 sawn stone paving flags. Beige colour. London stone or similar approved

Brick edging. Wienerberger Valeriaan Yellow stock facing bricks or similar approved.

Treated brown softwood railway sleeper edging. (100 x 200 x 2400)

Treated timber decking

20mm Golden Gravel. (Build Base or similar approved)



PLANTING SCHEDULE

DWARF CONIFERS						
Abbrev	Hedgerow (double staggered row 30cm apart) Species	Height (cm)	Form / Habit	Container Size	Density m² or Lm	Quantity
TBS	Taxus baccata 'Standishii'	60-80	Single leader	10L	SPOT	2
CJV	Cryptomeria japonica 'Vilmoriniana'	30-40	Bushy	10L	SPOT	4

HEDGEROW

Abbrev	Hedgerow (double staggered row 30cm apart) Species	Height (cm)	Form / Habit	Container Size	Density m² or Lm	Quantity
PRR	Photinia x fraseri 'Red Robin'	80-100	Bushy	10L	4/Lm	25

PROPOSED ORNAMENTAL SHRUBS

Abbrev	Species	Height (cm)	Form / Habit	Container Size	Density m² or Lm	Quantity
CHM	Chaenomeles speciose 'Moerloosei'	60-80	Bushy	10L	3	3
CAP	Choisya 'Aztec Pearl'	60-80	Bushy	10L	3	15
CCB	Cotoneaster 'Coral Beauty'	60-80	Bushy	10L	4	20
EEG	Euonymus 'Emerald and Gold'	30-40	Bushy	5L	6	22
FNV	Fargesii nitida 'Volcano'	60-80	Bushy	10L	5	10
HCD	Hedera colchica dentata	40-60	Bushy	5L	3Lm	15
HSA	Hebe 'Sapphire'	40-60	Bushy	10L	4	5
HYM	Hypericum x moserianum	40-60	Bushy	10L	5	25
HYAP	Hydrangea anomala subsp. petiolaris	60-80		10L	3	5
GRL	Griselinia littoralis	40-60	Bushy	5L	5/Lm	25
MC	Mahonia x Media 'Charity'	100-120	-	20-30L	SPOT	1
NDO	Nandina domestica	60-80	Bushy	10L	SPOT	2
PAT	Pachysandra terminalis	30-40	Bushy	5L	4/Lm	70
PYG	Pyracantha 'Orange Glow'	60-80		10L	3	5
RMJ	Rosmarinus officinalis 'Miss Jessopp's Upright'	60-80	Specimen	10L	SPOT	5
SHH	Sarcococca hookeriana var. humilis	40-60	Bushy	10L	5	10
SPG	Spiraea japonica 'Goldmound'	40-60	Bushy	10L	3	5
VMA	Vinca minor alba	15-20	-	2L	4/Lm	90
VMP	Vinca minor atropurpurea	15-20	-	2L	4/Lm	40
VID	Viburnum davidii	60-80	Bushy	10L	3	10

CLIMBERS

Abbrev	Species	Height (cm)	Form / Habit	Container Size	Density m² or Lm	Quantity
CLA	Clematis armandii	80-100	Several shoots	3L	SPOT	3
JNU	Jasminum nudiflorum	60-80	Several shoots	3L	SPOT	4
LJH	Lonicera japonica 'Halliana'	60-80	Several shoots	3L	SPOT	2
TRJ	Trachelospermum jasminoides	60-80	Several shoots	3L	SPOT	3

Turf

- 3.3
- Turfing operations will be in accordance with BS:4428:1989. Whole turves will be laid around the perimeter of the area to be turfed. The central area will be laid in rows with staggered joints, well butted together, working from planks positioned on turves already laid. The turf will be watered on completion. Any unevenness will be made good by lifting the turf and adjusting the levels. Should shrinkage occur, fine topsoil will be brushed into the joints.

Amenity Grass

- 3.4
- When newly seeded and turfed areas reach 40mm they will be lightly rolled and cut to a height of 30mm. All arisings will be removed. Any bare patches will be made good at this time. Seeded areas shall be cut for a second time when the sward reaches 50mm high.

1. GENERAL

- 1.1
- All plants will conform to BS 3936-1 (1992): and be in accordance with the National Plant Specification. Supplying nurseries will be registered under the HTA Nursery Certification Scheme. Trees will be planted in accordance with BS:8545:2014. All plants will be packed and transported in accordance with the Code of Practice for Plant Handling as produced by CPSE.
- 1.2
- Planting will not be carried out when the ground is waterlogged, frost bound or during periods of cold drying winds.
- 1.3
- If the formation level is compacted it should be ripped through before topsoiling. Recommended topsoil depths are 450mm for shrubs and 150mm for grass.
- 1.4
- Shrubs are to be set out as shown on the drawing and pit planted into the prepared soil at the specified centres with minimal disturbance to the rootball and well firmed in. Spread ornamental pine bark mulch to a depth of 75mm across all new planting areas, ensuring groundcover plants are not buried.

2. Shrub/herbaceous planting

- 2.1
- Recommended rooting depths are 600mm for shrubs/herbaceous plants. Multi-purpose topsoil depths shall be 300mm for shrubs/herbaceous, ensuring that a suitable subsoil shall provide the remainder of the minimum rooting depth. Before receiving topsoil, subsoils should be loosened using ripping equipment, this shall be done when the subsoil is dry to encourage soil shattering. All stones and other objects larger than 50 mm shall be removed from the prepared surface.
- 2.2
- Within the day of planting shrub/herbaceous plants should be saturated to field capacity, this shall be done before applying the below bark mulch.

Maintenance during first growing season

- 2.3
- All dead, dying or diseased shrubs will be replaced with shrubs of similar size and species. If the failure of the shrub is due to disease and the disease is considered likely to re-occur then an alternative species may be used as replacement if agreed with the LPA.
- 2.4
- The site is to be visited as required throughout the year to undertake the following operations:

- 2.5
- Weed clearance: All planting areas will be kept weed free by hand weeding or herbicide treatment.

- 2.6
- Checking trees: All tree ties and stakes will be checked and adjusted if too loose, too tight or if chafing is occurring. Any broken stakes will be replaced.

- 2.7
- Formative pruning: Any damaged shoots/branches will be pruned back to healthy wood. Plants will be pruned in accordance with good horticultural practice to maintain healthy well-shaped specimens.

Watering during first growing season

- 2.8
- The requirement for watering of newly planted shrubs will generally be dependent on weather conditions during the first growing season following planting. In a dry season watering may be required on a fortnightly basis from immediately after planting until the end of the growing season, but in a wet season watering may not be required at all. Therefore shrubs shall be monitored regularly by test digging down to root level to assess the water content of the soil, with watering undertaken as required to ensure that the soil is at field capacity 2-3 days after watering.

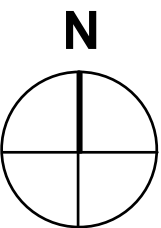
3. GRASS

Preparation

- 3.1
- The area to be turfed will be sprayed out with a glyphosate herbicide and cultivated to a depth of 100mm removing all weeds, debris and stones over 25mm diameter. The surface will be raked to smooth flowing contours with a fine tilth, incorporating pre-seeding fertiliser at 70 g/m2.

Delivery and Storage

- 3.2
- Turf will be supplied in accordance with BS: 3936. Turf will be Medallion as supplied by RowLawn. It will be close textured and green in colour and be sufficiently fibrous to withstand handling. Turves will be regular in shape, 300mm wide and of uniform thickness (minimum 25mm). The grass will be closely mown and will not exceed 25mm in height. Turf will be stacked in piles of up to 1 metre. It will not be laid in frosty or waterlogged conditions and will not be stacked in rolls for more than three days.



0 5m

A	Addition of hard landscape materials and removal of ramps replaced with steps	9/7/19
B	Amendment to hard landscape materials in key	15/7/19

LandscapeCollective

Landscape Collective Ltd
Henry Wood House
2 Riding House Street
London
W1W 7FA

Client:
Firethorn Property Holdings Limited
Project:
Vernon House, 5-8 Marks Square
Description:
Detailed Planting plan

Status:
Planning
Scale:
1:100 @A1
Job Number:
LC/00256
Drawn I Checked
SH SW
Drawing Number:
03
Date:
15/07/2019
Revision:
B