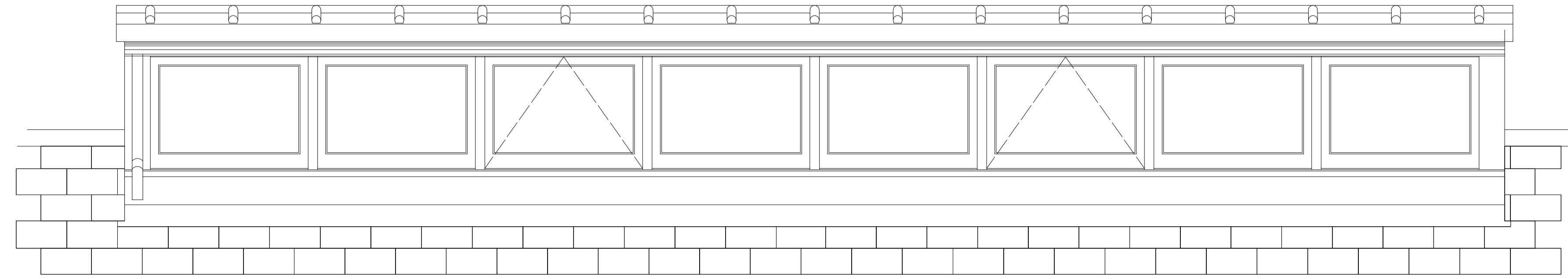
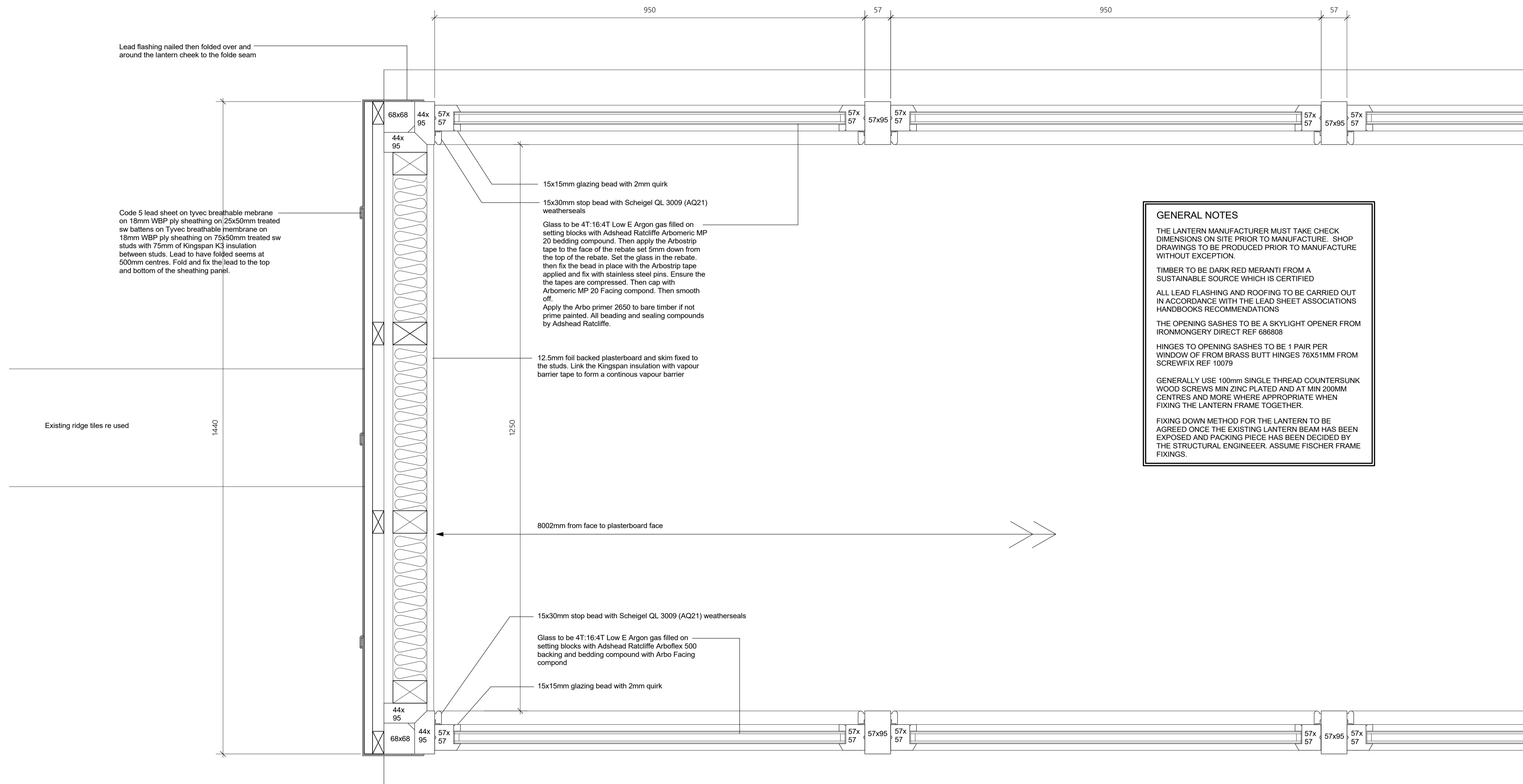


EXISTING LANTERN ROOF GABLE ELEVATION



EXISTING LANTERN ROOF ELEVATION



GENERAL NOTES

THE LANTERN MANUFACTURER MUST TAKE CHECK DIMENSIONS ON SITE PRIOR TO MANUFACTURE. SHOP DRAWINGS TO BE PRODUCED PRIOR TO MANUFACTURE WITHOUT EXCEPTION.

TIMBER TO BE DARK RED MERANTI FROM A SUSTAINABLE SOURCE WHICH IS CERTIFIED

ALL LEAD FLASHING AND ROOFING TO BE CARRIED OUT IN ACCORDANCE WITH THE LEAD SHEET ASSOCIATIONS HANDBOOKS RECOMMENDATIONS

THE OPENING SASHES TO BE A SKYLIGHT OPENER FROM IRONMONGERY DIRECT REF 686808

HINGES TO OPENING SASHES TO BE 1 PAIR PER WINDOW OF FROM BRASS BUTT HINGES 76X51MM FROM SCREWFIX REF 10079

GENERALLY USE 100mm SINGLE THREAD COUNTERSUNK WOOD SCREWS MIN ZINC PLATED AND AT MIN 200MM CENTRES AND MORE WHERE APPROPRIATE WHEN FIXING THE LANTERN FRAME TOGETHER.

FIXING DOWN METHOD FOR THE LANTERN TO BE AGREED ONCE THE EXISTING LANTERN BEAM HAS BEEN EXPOSED AND PACKING PIECE HAS BEEN DECIDED BY THE STRUCTURAL ENGINEER. ASSUME FISCHER FRAME FIXINGS.

PROPOSED PARTIAL PLAN 1:5

NOTES

- This drawing remains the copyright of Chapman Architects. Do not copy, transfer or re-assign this drawing in digital or hardcopy format to a third party without written consent of Chapman Architects.
- Do not scale from drawings. Only use stated dimensions. Check all dimensions on site and please report any discrepancies to architect.
- Drawings to be read in conjunction with other consultant's drawings and specifications.

KEY

6 FLITCROFT STREET LONDON

Proposed Plan Section and Elevations

project ref	scale(s)	original paper size
1907	1:50	A1

name :

project originator volume level type role number

SIXFS - CA - 00 - 00 - DR - A - 4102

status : suitability description :

S2 SUITABLE FOR INFORMATION

revision : revision description :

P02 PRELIMINARY

P02	Planning issue	RH	XX	12.07.19
P01	First issue	XX	XX	00.00.00
rev	description			drawn checked date