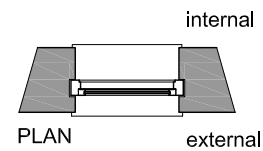
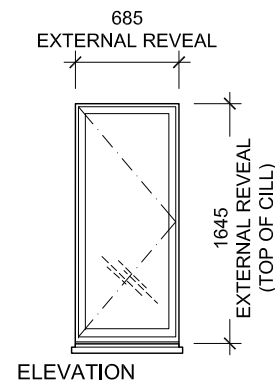


dimensions are approx.

WINDOW: WG-01 / RM: RG-05 (BEDROOM 5)
FRONT ELEVATION

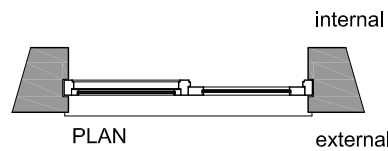
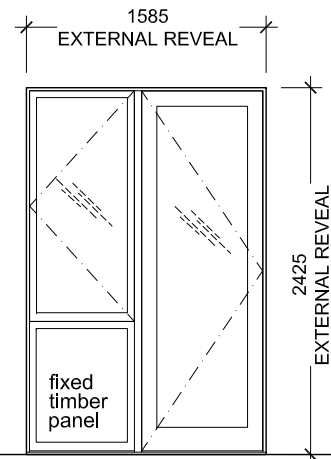
Window Type: Single casement, double-glazed timber window
Finish: Painted



dimensions are approx.

WINDOW: WG-02 / RM: RG-03 (BEDROOM 4)
FRONT ELEVATION

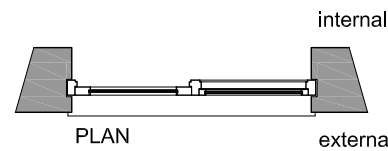
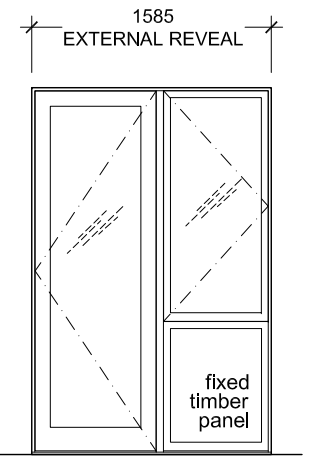
Window Type: Single casement, double-glazed timber window
Finish: Painted



dimensions are approx.

EXT. DOOR: DG-02 / RM: RG-05 (BEDROOM 5)

Description: New timber-framed, single-leaf, hinged, double-glazed door with double-glazed casement window and timber panel below casement
Finish: Painted



dimensions are approx.

EXT. DOOR: DG-03 / RM: RG-03 (BEDROOM 4)

Description: New timber-framed, single-leaf, hinged, double-glazed door with double-glazed casement window and timber panel below casement
Finish: Painted

WINDOW / DOOR PERFORMANCE SPECIFICATION:

Minimum certified / tested criteria :
Overall window Thermal Transmittance U-values Dbl Glazed = 1.6w/m2K
Overall door Thermal Transmittance U-values Dbl Glazed = 1.8w/m2K

Window Sizes : must be checked on site / surveyed and suppliers fabrication drawings submitted for approval by Architect.

Window Styles: as indicated on drawings - casement option to be OUTSIDE opening.

NOTES :

1. WINDOW SITE INSTALLATION CRITERIA:
Size: As supplied Window unit size, assumed tolerances are: 10mm each at head, cill & jambs unless noted otherwise. Tolerances TBC by / with window supplier & with site dims. Window Surrounds & grounds: to be level, flush & prepared. Cavity closers & vertical dpcs installed in accordance with details. To be securely fixed/bolted using preparatory galvanized straps/fixing plates to structural openings, number size, bolt type & location tba & subject to manufactures confirmation. To be weather sealed all around, onto building grounds.

2. All windows to have trickle ventilation in compliance with current Building Regulations. Trickle ventilation to be discrete & designed in consultation with fabricator and architect.

3. All glazed units to have a 10 year warrantee.

general notes

THIS DRAWING IS COPYRIGHT OF STUDIO MARK RUTHVEN. THIS DRAWING MUST BE READ IN CONJUNCTION WITH THE DESIGNER'S RISK ASSESSMENT, SPECIFICATION AND ALL OTHER RELEVANT DOCUMENTATION AND DRAWINGS. STUDIO MARK RUTHVEN ACCEPT NO LIABILITY FOR ANY EXPENSE, LOSS OR DAMAGE OF WHATSOEVER NATURE AND HOWEVER ARISING FROM ANY VARIATION MADE TO THIS DRAWING OR IN THE EXECUTION OF THE WORK TO WHICH IT RELATES WHICH HAS NOT BEEN REFERRED TO THEM AND THEIR APPROVAL OBTAINED. FOR THE PURPOSE OF CONSTRUCTION DO NOT SCALE FROM THIS DRAWING OR THE COMPUTER DIGITAL DATA. ONLY FIGURED DIMENSIONS ARE TO BE USED. IF IN DOUBT ASK.

purpose of issue

COND. DISCHARGE

notes

- DISCHARGE OF CONDITION 03/07/19 MP/MR NO.7

rev	notes	date	by	checked

* do not scale from this drawing.
* check all dimensions on site.

StudioMarkRuthven
architecture

92 Prince of Wales Road
Kenilsh Town
London NW5 3NE
T 020 7 485 0050
F 020 7 485 0030

project name

10 NUTLEY TERRACE
LONDON NW3 5SB

drawing title

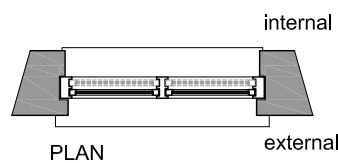
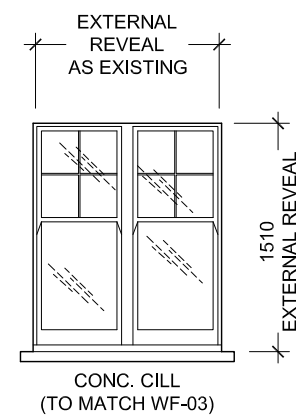
WINDOW SCHEDULE

scale 1:20 @ A3 date 28.03.19

drawn by MP checked MR

project ref. drawing no. revision

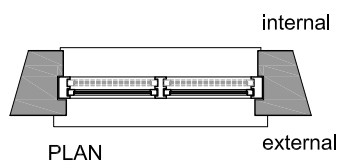
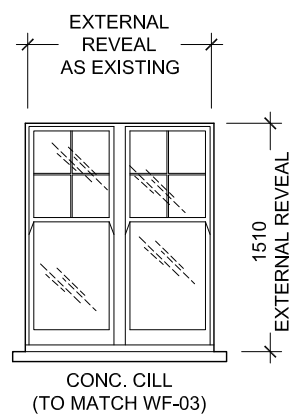
NU2 NU2-DC-816 -



DESIGN & DETAILING TO MATCH WF-03
dimensions are approx.

WINDOW: WF-01 / RM: RF-08 (BEDROOM 3)
FRONT ELEVATION

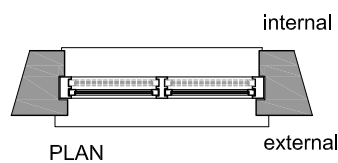
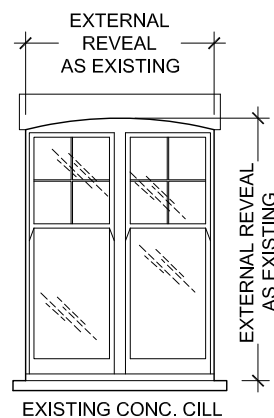
Window Type: Double sash, double-glazed timber framed
Finish: Painted



DESIGN & DETAILING TO MATCH WF-03
dimensions are approx.

WINDOW: WF-02 / RM: RF-07 (FAM. BATHROOM)
FRONT ELEVATION

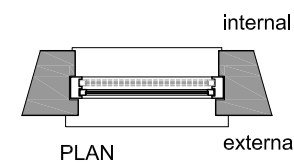
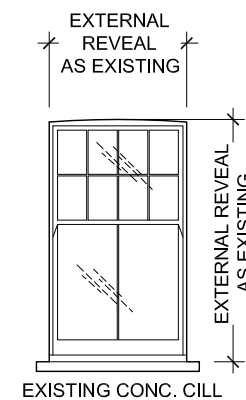
Window Type: Double sash, double-glazed timber framed
Finish: Painted



DESIGN & DETAILING TO MATCH EXISTING
dimensions are approx.

WINDOW: WF-03 / RM: RF-06 (BEDROOM 2)
FRONT ELEVATION

Window Type: Double sash, double-glazed timber framed
Finish: Painted



DESIGN & DETAILING TO MATCH EXISTING
dimensions are approx.

WINDOW: WF-04 / RM: RF-06 (BEDROOM 2)
REAR ELEVATION

Window Type: Double-glazed timber framed sash window
Finish: Painted