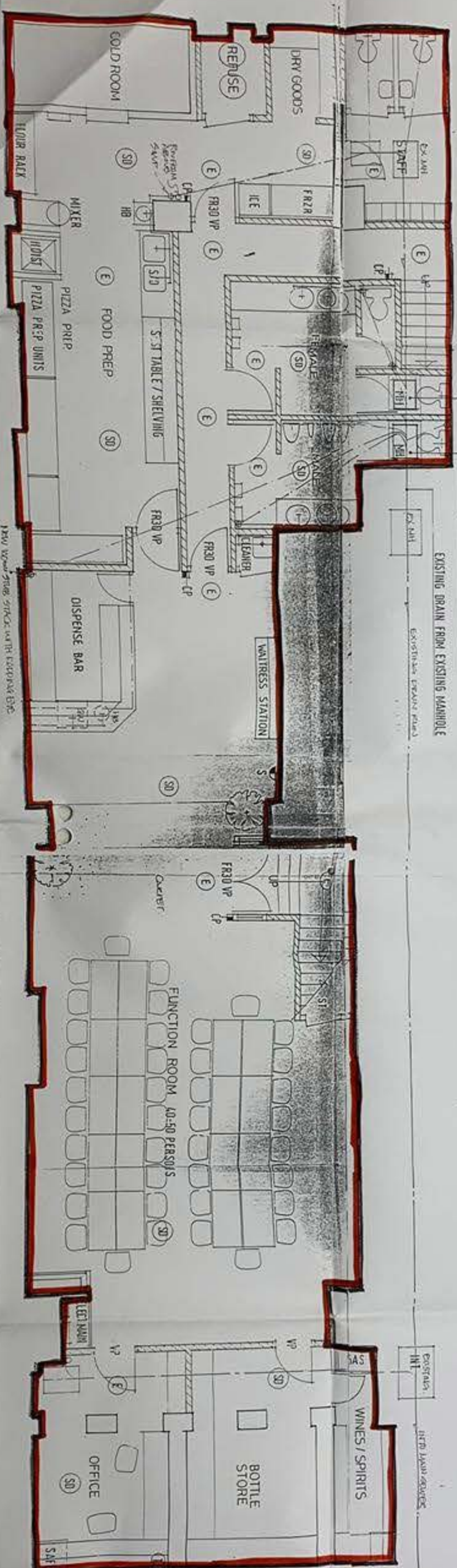


GROUND FLOOR
NEW MANHOLE ON EXISTING RUN & INVERT LEVEL



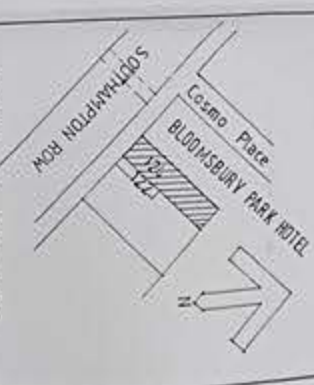
BASEMENT

1200 WALLS
• All new plaster to be finished to be in place, smooth, flat, of 1:3 cement to 4 parts sand, with a coat of 12.5mm thick, fine sand, plaster applied to all internal surfaces. All plaster to be finished to be in place, smooth, flat, of 1:3 cement to 4 parts sand, with a coat of 12.5mm thick, fine sand, plaster applied to all internal surfaces. All plaster to be finished to be in place, smooth, flat, of 1:3 cement to 4 parts sand, with a coat of 12.5mm thick, fine sand, plaster applied to all internal surfaces.

Fire considerations
• Both ground floor and basement to be given 2 hours fire resistance in the walls, ceiling and floor and to be finished to be in place, smooth, flat, of 1:3 cement to 4 parts sand, with a coat of 12.5mm thick, fine sand, plaster applied to all internal surfaces.

KEY

⊕	Electrical Lighting to BS 5266
⊙	Electrical Lighting to BS 5266
⊖	Electrical Lighting to BS 5266
⊗	Electrical Lighting to BS 5266
⊘	Electrical Lighting to BS 5266
⊙	Electrical Lighting to BS 5266
⊖	Electrical Lighting to BS 5266
⊗	Electrical Lighting to BS 5266
⊘	Electrical Lighting to BS 5266



LOCATION PLAN SCALE 1:1000

REVISIONS

No	Date	Description
1	05/12/2000	Initial Issue
2	15/02/2001	As above
3	15/02/2001	As above
4	15/02/2001	As above
5	15/02/2001	As above
6	15/02/2001	As above

01992712102

Client
'GUSTO' RESTAURANT
124 SOUTHAMPTON ROW
LONDON WC

PROPOSED PLANS

Scale 1:50
Date JUNE 2000
Drawn by ABT

Dwg No. BEN SR/00.02
Rev. E