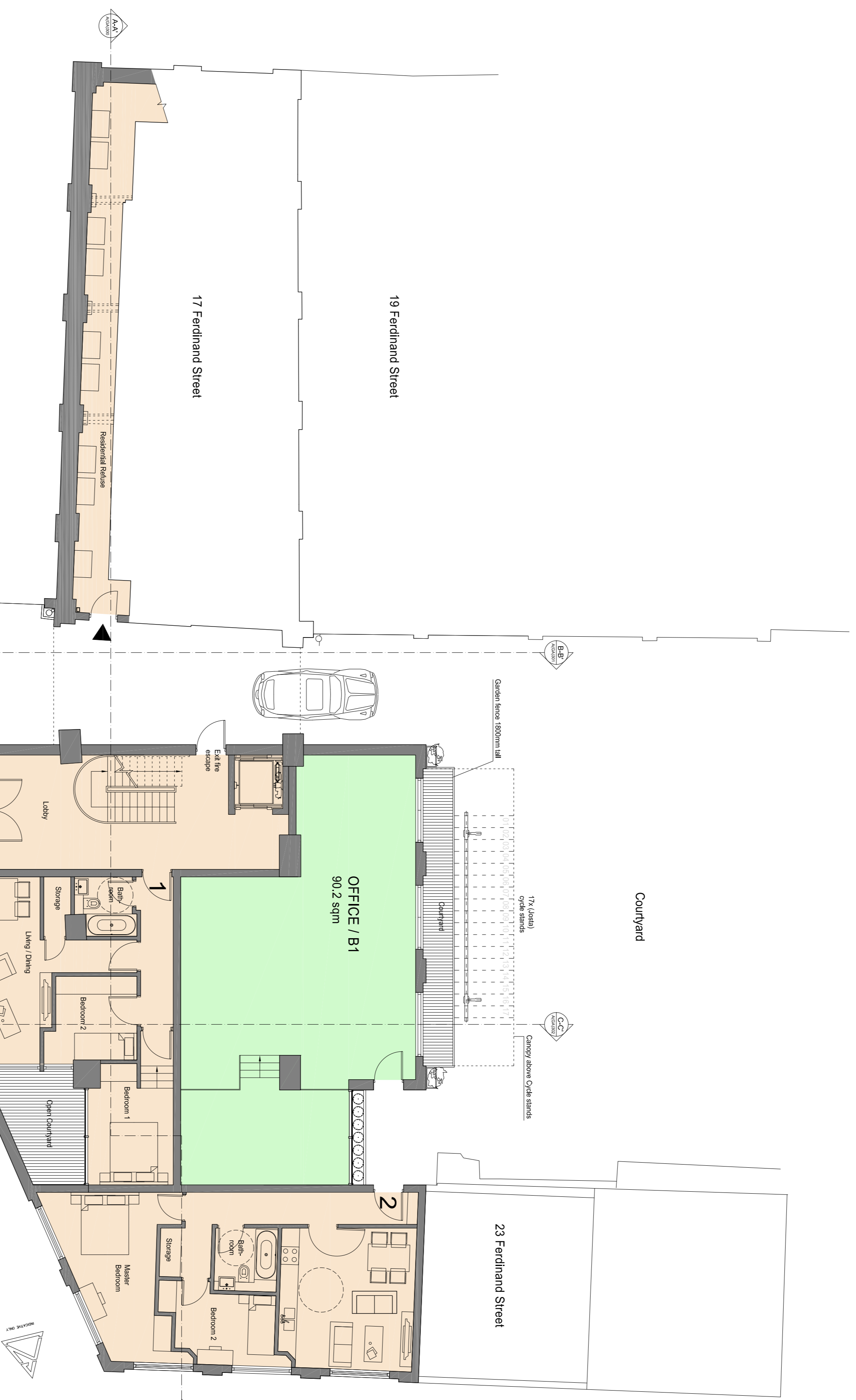


REVISIONS			
Rev.	By	Date	Description
1			

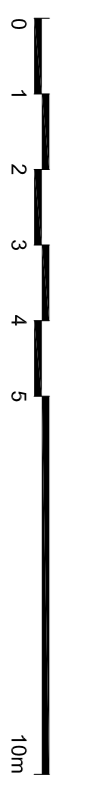


PROPOSED GROUND FLOOR

OFFICE GFA (ext): 103.3 sqm
 RESIDENTIAL GFA (ext): 225.5 sqm

Flat 1: 61.2 sqm (2 bed)
 Flat 2: 67.2 sqm (2 bed)

C3 space
 B1 space



PLANNING APPLICATION

ALL DIMENSIONS TO BE CHECKED ON SITE
 WORK TO REMAIN DIMENSIONS ONLY
 REPORT DISCREPANCIES TO ARCHITECT
 AT ONCE BY EMAIL (PROJECT@WDS)

Contemporary Design Solutions

46 Great Marlborough Street
 London
 W1F 7JW Tel: 020 7494 4844
 Telephone: 020 7494 9000 Fax: 020 7494 4844

Client

WARMAHAZE LTD

Project Title

17, 27 & 25 Ferdinand Street,
 LONDON NW1

Drawing Title

Approved Ground Floor Plan

Scale: 1:100 @ A1 1200x900 December 2018
 Drawn: LV Checked: Rev:
 Drawing No: **181130-A(AP)100**

CAD plot date: 14 May 2019 - 04:56pm