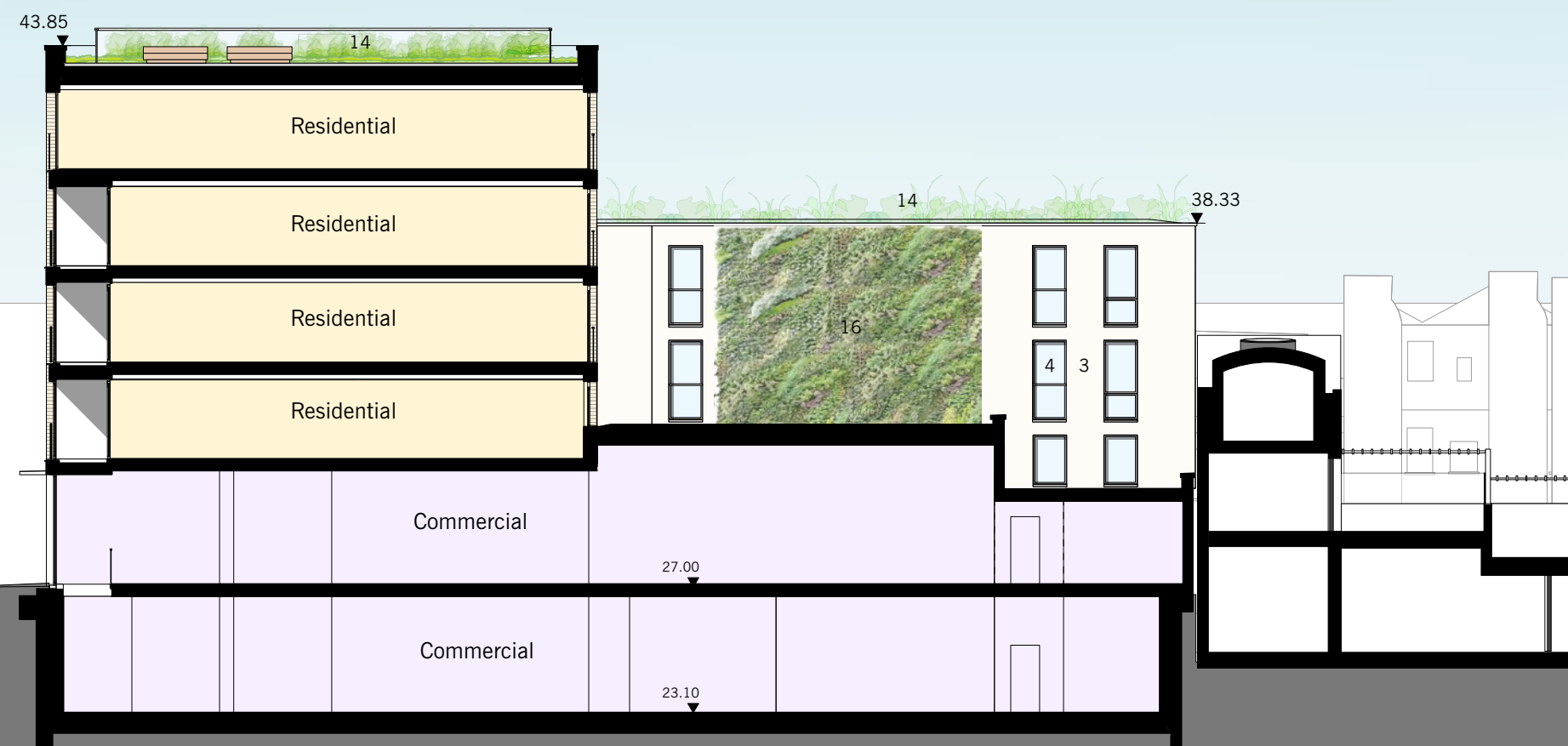
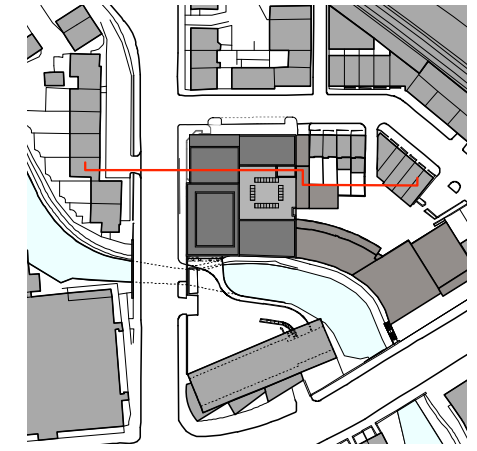


Materials:

- 1) Brick façade
- 2) Glazed terracotta panels
- 3) Rendered façade with external wall insulation system
- 4) Powder coated composite windows
- 5) Laser Cut metal gates.
- 6) Bronze coloured metal glazed screen
- 7) Translucent glass balustrade
- 8) Metal railing balustrade
- 10) Glass door (residential entrance)
- 11) Glazed double door (office entrance)
- 12) Metal facade cladding
- 13) Sliding metal screens
- 14) Biodiverse Green Roof
- 15) Juliet balcony
- 16) Green Wall

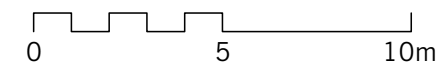


- Rev.E 27/11/2017:**
- 1.RESIDENTIAL:
 - R.3) Revisions to Courtyard elevations to suit internal layout of apartments
 - R.9) Stair access added to communal roof terrace
 - R.12) Private terrace changed to communal terrace
 - 2.COMMERCIAL:
 - C.2) Removal of external lightwell in courtyard

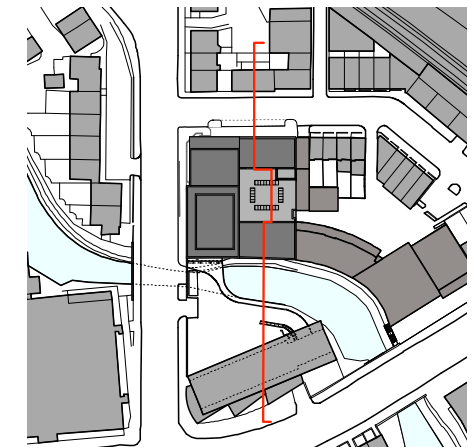
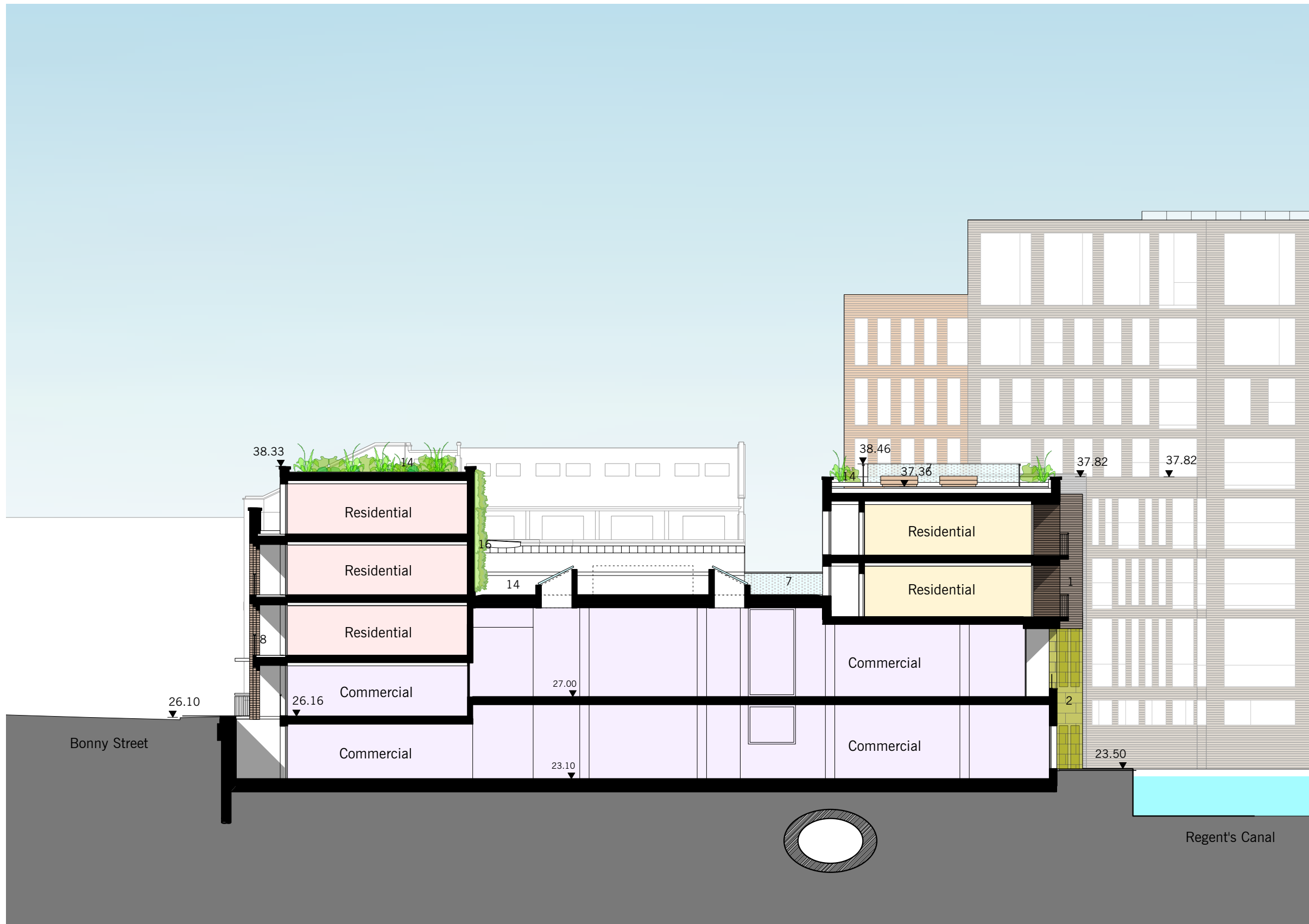
- Rev.F 14/05/2017:**
- 1.RESIDENTIAL:
 - R.7) Lightwell to rear of Flat A1.1 enlarged, window revised.
 - R.11) Lift overrun over Core A roof indicated.
 - R.12) Stair access to Block B roof omitted, lift overrun not required and omitted , AOV repositioned.
 - R.13) Block B roof layout revised, communal terrace changed to private terrace.
 2. COMMERCIAL
 - C.4) Level of the roof above ground floor commercial area raised.

- Rev.G 21/06/2019:**
- 1.RESIDENTIAL:
 - R.6) Mix of flats in Block A,B & C amended
 - R.8) Lift overrun on the roof above the third floor of Block A not required and omitted.

Proposed Section AA



S73 MINOR MATERIAL AMENDMENTS



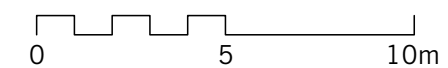
Rev.E 14/05/2019:

- 1. RESIDENTIAL:
 - R.4) Arrangement of wheelchair unit revised with living area at ground floor and bedrooms at the first floor to accord with repositioning of lift.
- 2. COMMERCIAL
 - C.1) General revisions to accord with the amendments to the residential area.
 - C.2) Rooflight design revised.
 - C.3) Roof above ground floor commercial area revised.
 - C.4) Level of the roof above ground floor commercial area raised.

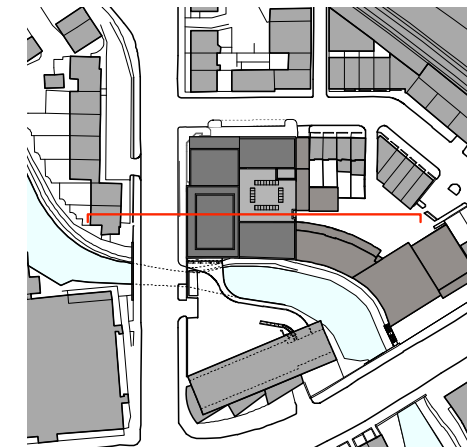
Rev.F 21/06/2019:

- 1. RESIDENTIAL:
 - R.4) Wheelchair unit repositioned to first floor in Block B.
- 2. COMMERCIAL
 - C.2) Floor void omitted.
 - C.3) Roof lights added to the roof above ground floor commercial area.

Proposed Section BB



S73 MINOR MATERIAL AMENDMENTS



Materials:

- 1) Brick façade
- 2) Glazed terracotta panels
- 3) Rendered façade with external wall insulation system
- 4) Powder coated composite windows
- 5) Laser Cut metal gates.
- 6) Bronze coloured metal glazed screen
- 7) Translucent glass balustrade
- 8) Metal railing balustrade
- 10) Glass door (residential entrance)
- 11) Glazed double door (office entrance)
- 12) Metal facade cladding
- 13) Sliding metal screens
- 14) Biodiverse Green Roof
- 15) Juliet balcony
- 16) Green Wall

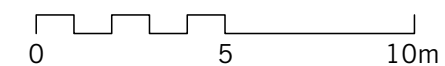
Rev.E 14/05/2019:

1. RESIDENTIAL:
 - R.2) Block C cycle store revised, cycle lift repositioned, staircases amended.
2. COMMERCIAL
 - C.3) Roof above ground floor commercial area revised.
 - C.4) Level of the roof above ground floor commercial area raised.
3. PLANT ROOM:
 - P.1) Plant room revised

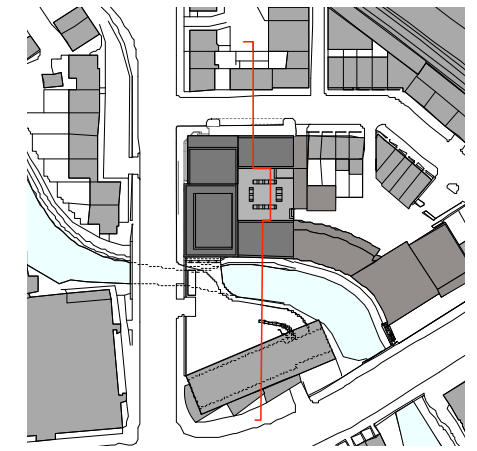
Rev.F 21/06/2019:

1. PLANT ROOM:
 - P.1) Plant room revised, staircase amended.

Proposed Section CC



S73 MINOR MATERIAL AMENDMENTS



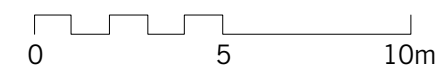
Rev.G 14/05/2017:

- 1. RESIDENTIAL:
 - R.4) Arrangement of wheelchair unit revised with living area at ground floor and bedrooms at the first floor to accord with repositioning of lift.
 - R.11) Lift overrun over Core A roof indicated.
 - R.12) Stair access to Block B roof omitted, lift overrun omitted, AOV repositioned.
 - R.13) Block B roof layout revised, communal terrace changed to private terrace.
- 2. COMMERCIAL
 - C.1) General revisions to accord with the amendments to the residential area.
 - C.2) Rooflight design revised.
 - C.3) Roof above ground floor commercial area revised.
 - C.4) Level of the roof above ground floor commercial area raised.

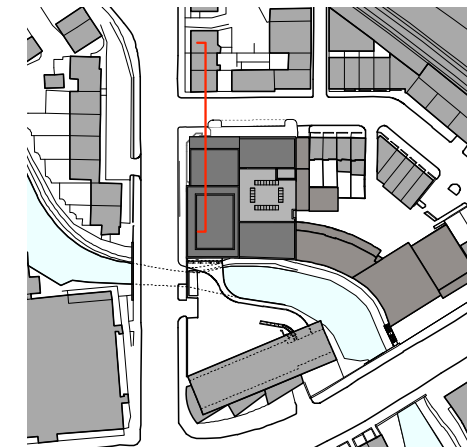
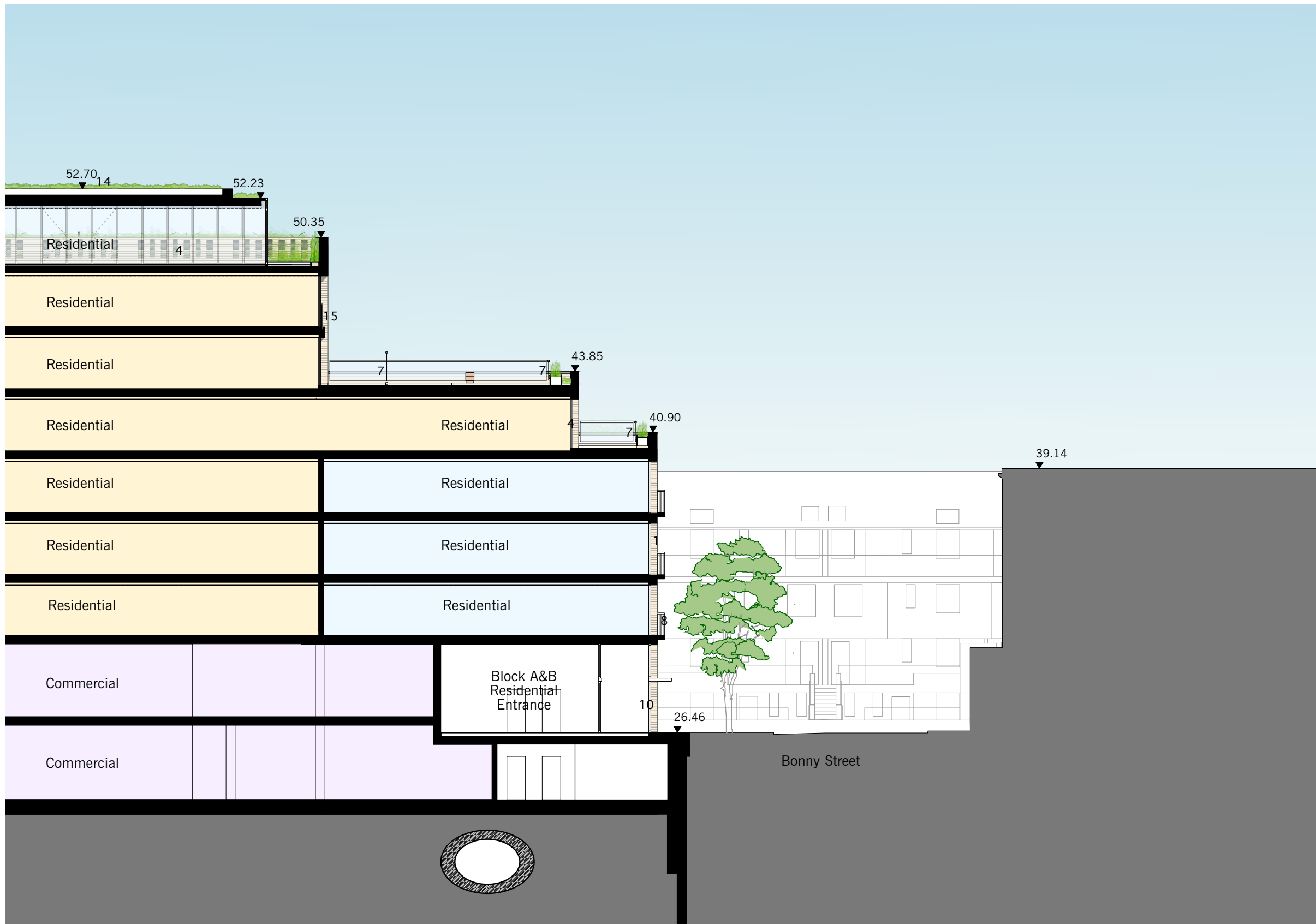
Rev.H 21/06/2019:

- 1. RESIDENTIAL:
 - R.4) Wheelchair unit repositioned to first floor in Block B.
 - R.8) Lift overrun on the roof above the third floor of Block A not required and omitted.
- 2. COMMERCIAL
 - C.2) Floor void omitted.
 - C.3) Roof lights added to the roof above ground floor commercial area.

Proposed Section DD



S73 MINOR MATERIAL AMENDMENTS



Materials:

- 1) Brick façade
- 2) Glazed terracotta panels
- 3) Rendered façade with external wall insulation system
- 4) Powder coated composite windows
- 5) Laser Cut metal gates.
- 6) Bronze coloured metal glazed screen
- 7) Translucent glass balustrade
- 8) Metal railing balustrade
- 10) Glass door (residential entrance)
- 11) Glazed double door (office entrance)
- 12) Metal facade cladding
- 13) Sliding metal screens
- 14) Biodiverse Green Roof
- 15) Juliet balcony
- 16) Green Wall

Rev.A 27/11/2017:

- 1.RESIDENTIAL:
 R.8) Residential access to Block B repositioned
 R.12) Private terrace changed to communal terrace

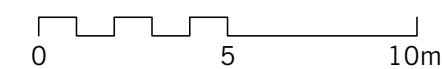
Rev.B 14/05/2017:

- 1.RESIDENTIAL:
 R.3) Block A&B entrance combined.
 R.13) Block B roof layout revised, communal terrace changed to private terrace.

Rev.C 21/06/2019:

- 1.RESIDENTIAL:
 R.6) Mix of flats in Block A,B & C amended

Proposed Section EE



S73 MINOR MATERIAL AMENDMENTS