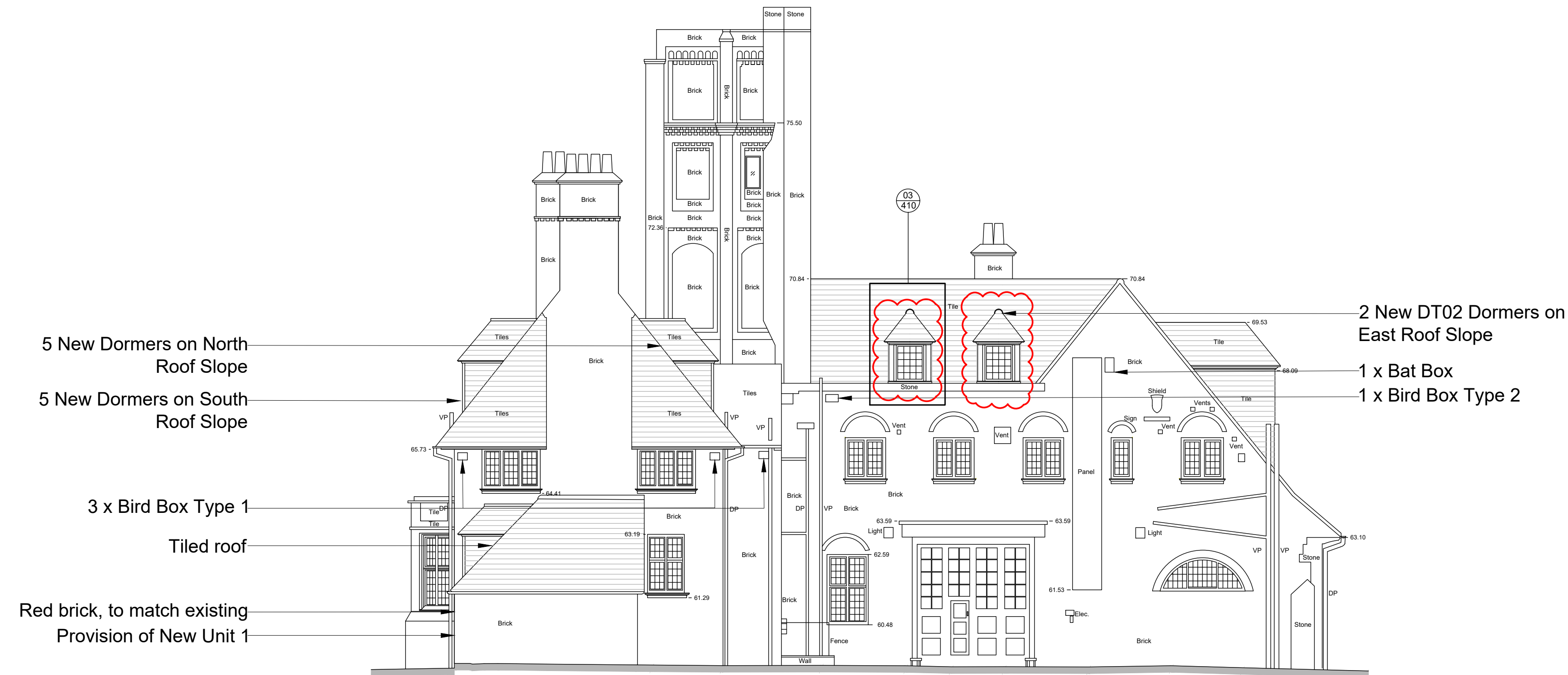


List of changes from consented scheme:

- Basement lowered by 85mm.
- Side extension lowered by 200mm.
- Dormer cheeks made to match dimensions as per existing dormer windows in courtyard.

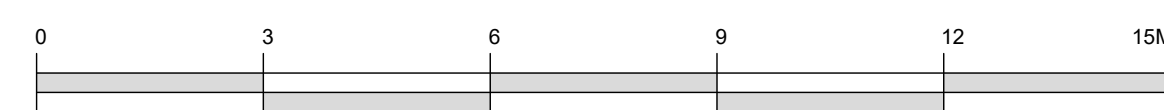


PROPOSED EAST ELEVATION

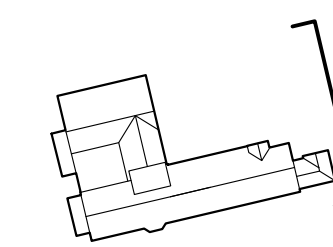


EXISTING EAST ELEVATION

Revisions		Revisions									
Rev	Date	By	Description	Checked	Approved	Rev	Date	By	Description	Checked	Approved
P1	21.12.18	TS	For NMA Issue	JM	RH						
P2	02.06.19	AD	NMA Re-issue	RB	RH						
P3	13.06.19	AD	NMA Re-issue - Rev Cloud Updates	RB	RH						



For electrical services (inc. lighting and cctv) refer to MEP engineer drawings
 For finishes refer to 289_1_2_Planning Facing Materials_1128L
 For bat and bird box specifications refer to 289_1_2_Planning Bird and Bat Boxes



Client Sign Off	North	Archived / Original: Tate Harmer	Unit G182, Stamford Works, 3 Gilbert Street, London N16 8JH	Do not scale. All dimensions to be checked on site. This drawing is copyright.
		Client: Platinum Land	8 Quagga House, 1 Duke of York Square, Kings Road, London, SW3 4LY	Date of Origin: 28.11.17
		Project: Belsize Park Firestation		Drawn By: TS
		Drawing Title: Proposed and Existing East Elevation		Scale: 1:100 @ A1
		Drawing Number: BFS THA PR PA 330 P3		Drawing Status: Planning