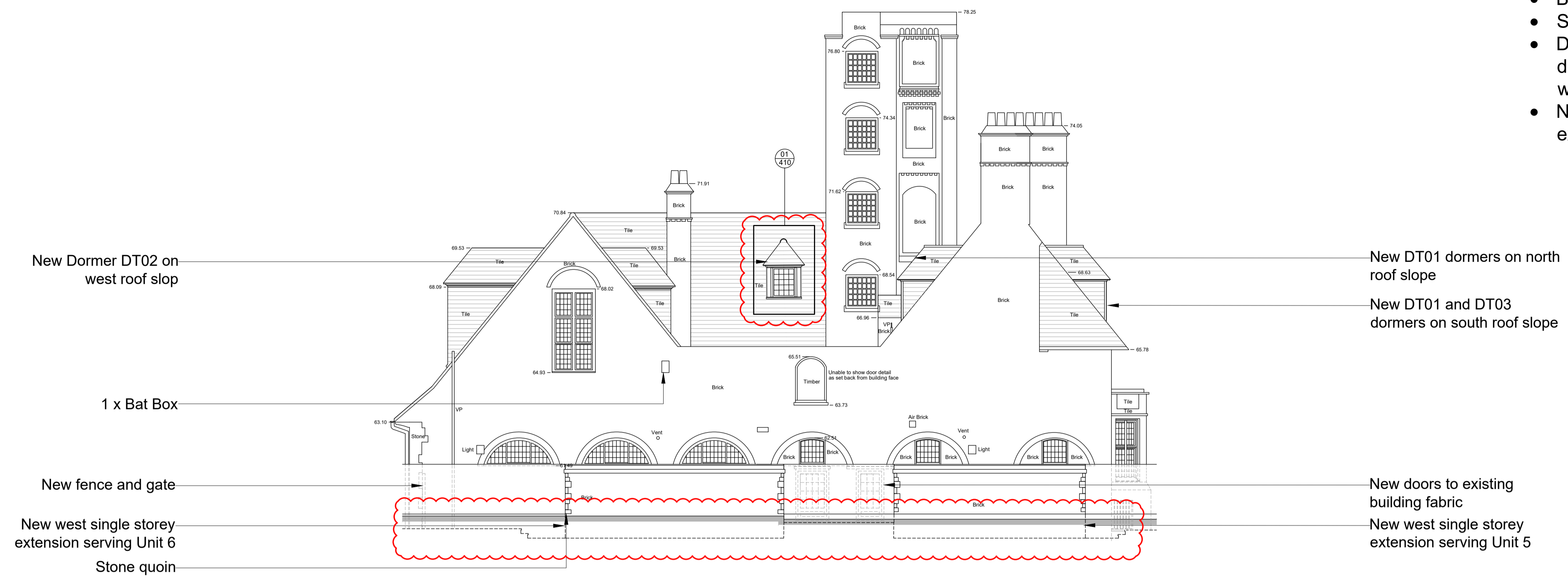
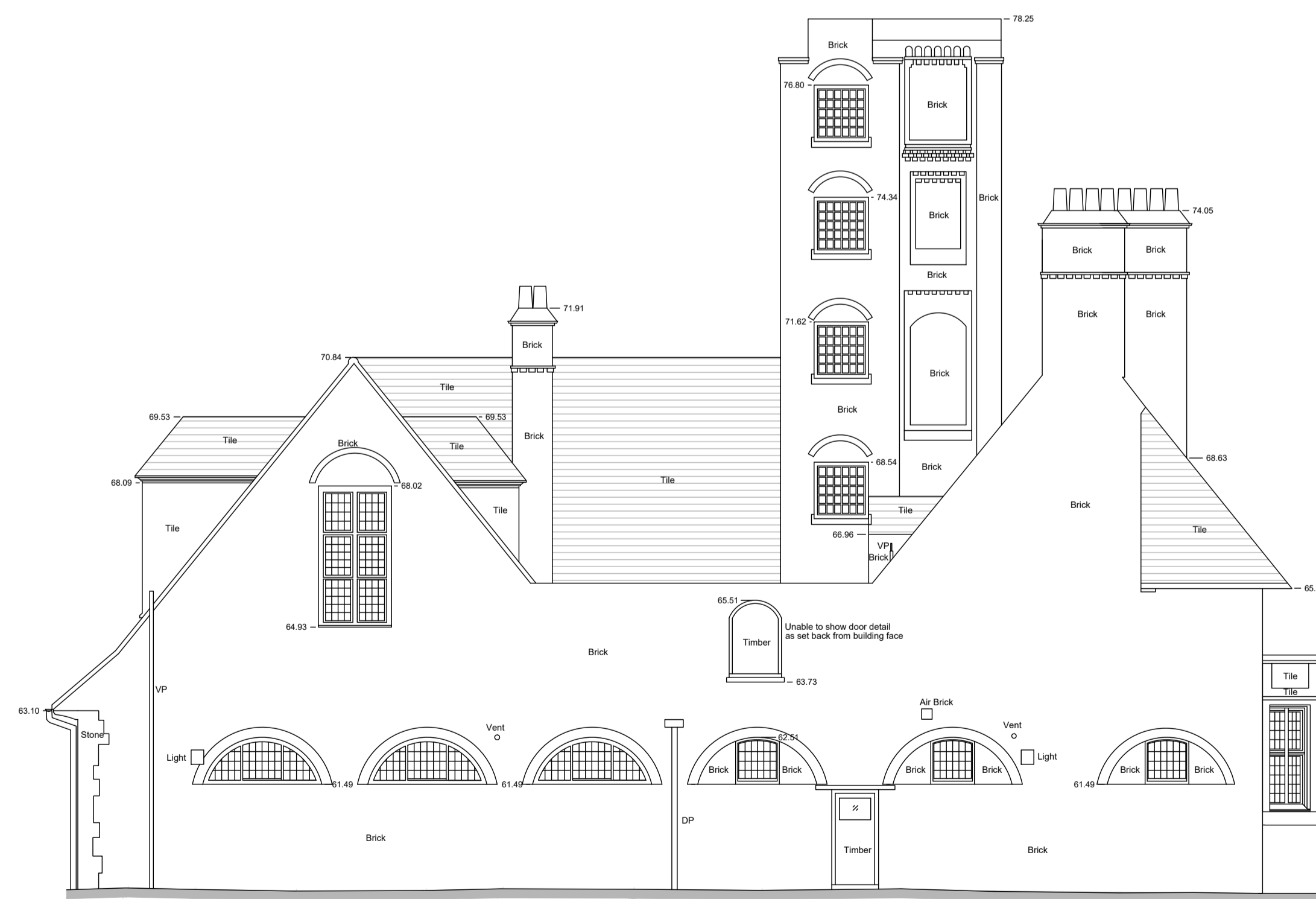


List of changes from consented scheme:

- Basement lowered by 85mm.
- Side extension lowered by 200mm.
- Dormer cheeks made to match dimensions as per existing dormer windows in courtyard
- New external dropped access to side extensions.

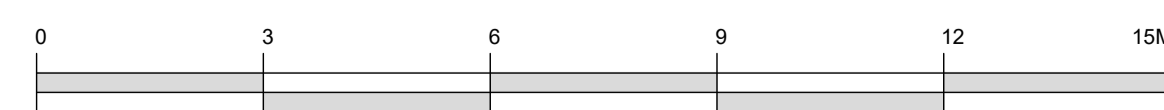


PROPOSED WEST ELEVATION

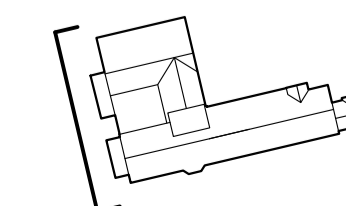


EXISTING WEST ELEVATION

Revisions					Revisions						
Rev	Date	By	Description	Checked	Approved	Rev	Date	By	Description	Checked	Approved
P1	21.12.18	TS	For NMA Issue	JM	RH						
P2	06.08.19	AD	NMA Re-issue	ABF	RH						
P3	13.08.19	AD	NMA Re-issue - Rev Cloud Updates	RB	RH						



For electrical services (inc. lighting and cctv) refer to MEP engineer drawings  
 For finishes refer to 289\_1\_2\_Planning Facing Materials\_1128L  
 For bat and bird box specifications refer to 289\_1\_2\_Planning Bird and Bat Boxes



Client Sign Off	North	Architect / Originator: <b>Tate Harmer</b>	Unit G182, Stamford Works, 3 Gilbert Street, London N16 8JH Tel: +44 (0)207 241 7481 Email: studio@tateharmer.com	Do not scale. All dimensions to be checked on site. This drawing is copyright.
		Client: <b>Platinum Land</b>	8 Quagga House, 1 Duke of York Square, Kings Road, London, SW3 4LY	
		Project: <b>Belsize Park Firestation</b>		Date of Origin: <b>28.11.17</b>
		Drawing Title: <b>Proposed and Existing West Elevation</b>		Drawn By: <b>TS</b>
		Drawing Number: <b>BFS THA PR PA 320 P3</b>		Scale: <b>1:100 @ A1</b>
				Drawing Status: <b>Planning</b>