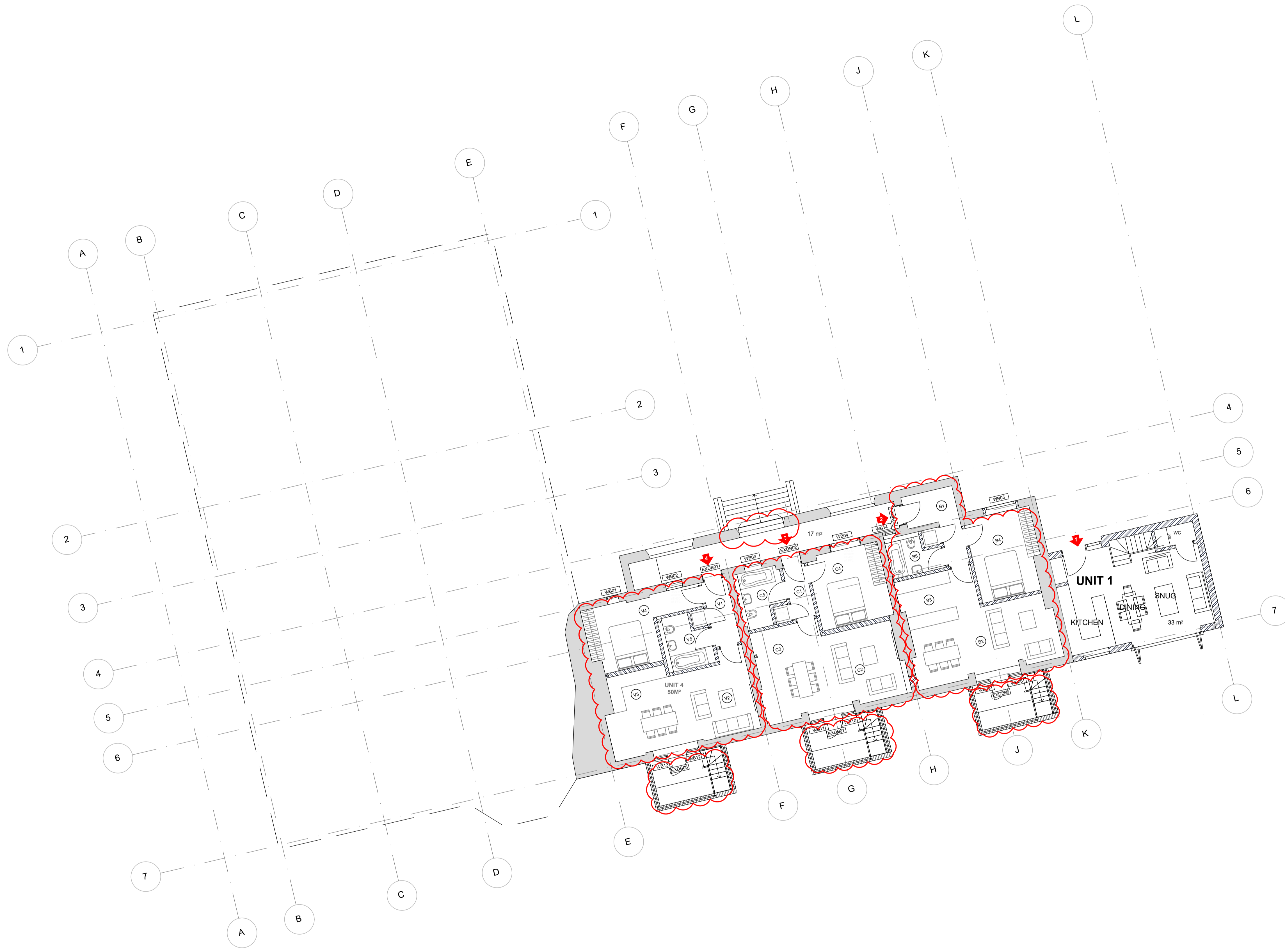
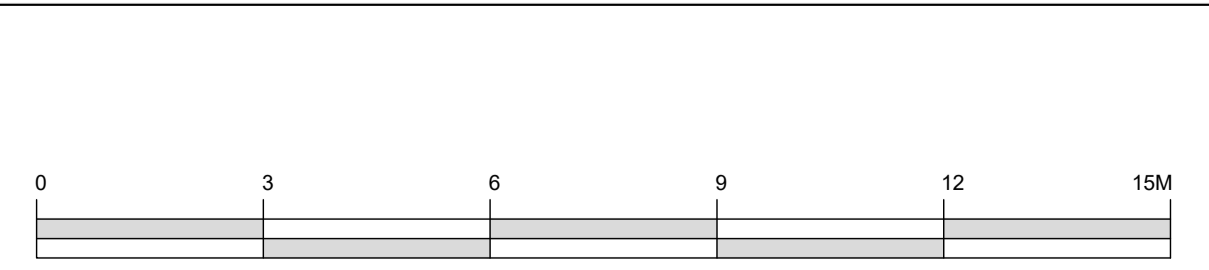


List of changes from consented scheme:

- Unit 1 - As per consented scheme. Please refer to NMA for unit 1.
- Unit 2 - Amendments to internal layout. Basement FFL lowered by 85mm. Amendments to lightwell stair and wall.
- Unit 3 - Amendments to internal layout. Basement FFL lowered by 85mm. Amendments to lightwell stair and wall.
- Unit 4 - Amendments to internal layout. Basement FFL lowered by 85mm. Amendments to lightwell stair and wall.



Revisions					Revisions						
Rev	Date	By	Description	Checked	Approved	Rev	Date	By	Description	Checked	Approved
P1	21.12.18	TS	For NMA Issue	JM	RH						
P2	05.06.19	AD	NMA Re-issue	RB	RH						
P3	13.06.19	AD	NMA Re-issue - Rev Cloud Updates	RB	RH						
P4	17.06.19	QJ	NMA Re-issue - Design Update	RB	RH						



KEY

Existing Retained Walls
 Proposed Walls
 BT Balustrade Type
 DT Dormer Type
 D Internal Door Reference
 EXD External Door Reference
 W External Window Reference

Client Sign Off	Architect/Originator: Tate Harmer	Unit G182, Stamford Works, 3 Gilt Street, London N16 8JH Tel: +44 (0)207 241 7481 Email: studio@tateharmer.com	Do not scale. All dimensions to be checked on site. This drawing is copyright.
	Class: Platinum Land	8 Overpel House, 1 Duke of York Square, Kings Road, London, SW3 4LY	Date of Origin: 28.11.17
	Project: Belsize Park Firestation		Drawn By: TS
	Drawing Title: Proposed Basement Plan		Scale: 1:100 @ A1
	Drawing Number: BFS THA PR AL 090 P4		Revision: Planning

A1
A3