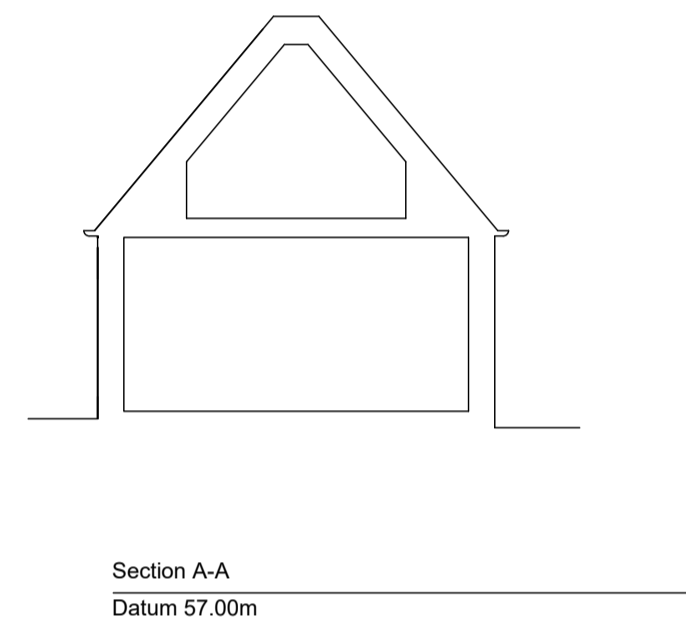
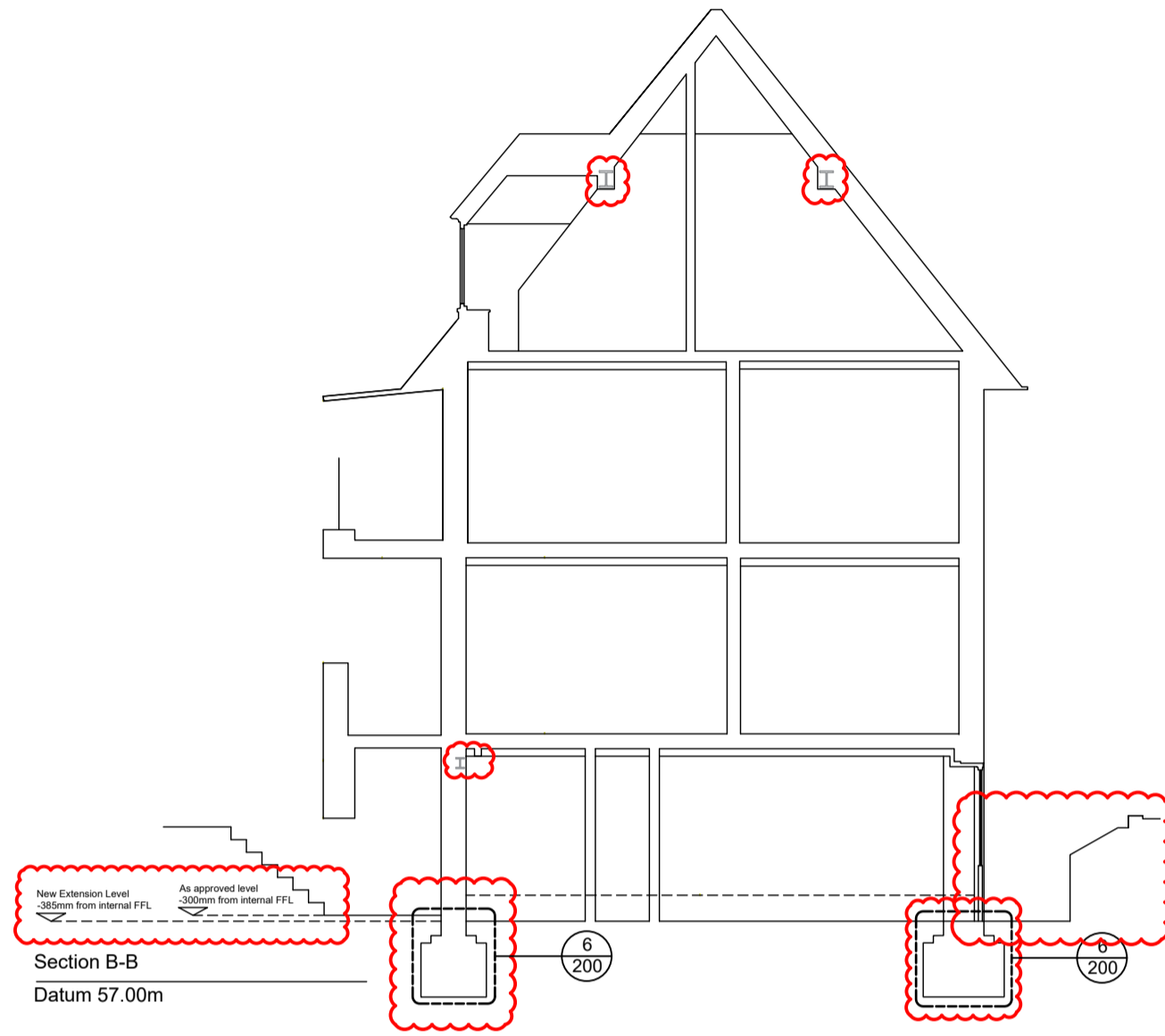


List of changes from consented scheme:

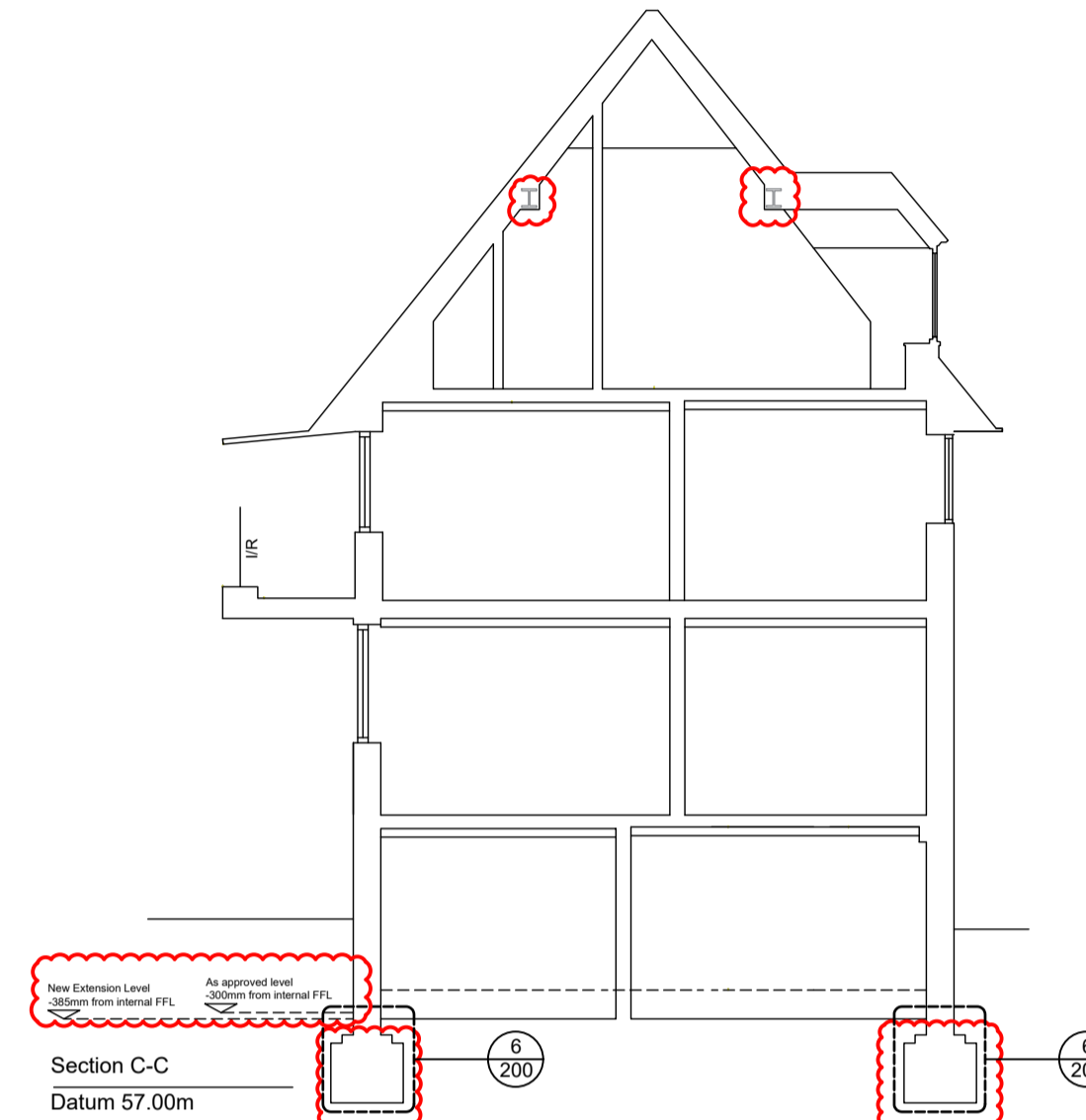
- Section B-B and C-C shows -85mm change of levels for new extension floor from approved internal FFL.
- Section B-B shows amendments to layout of basement lightwells.
- Section E-E - shows -200mm change of levels for new extension floor from approved internal FFL.
- Section D-D shows new storage mezzanines added to Unit 5 bedrooms



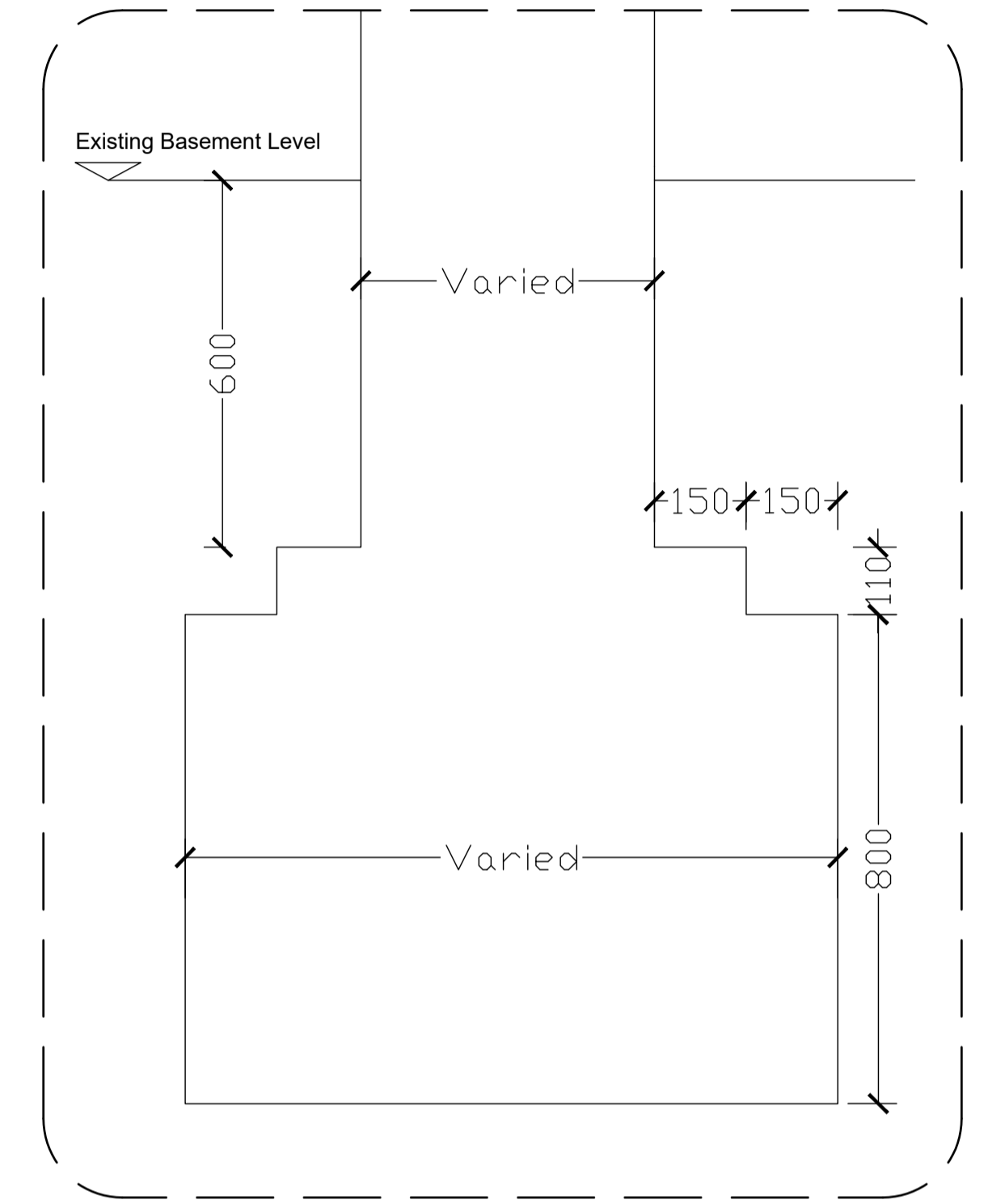
1 - SECTION A-A



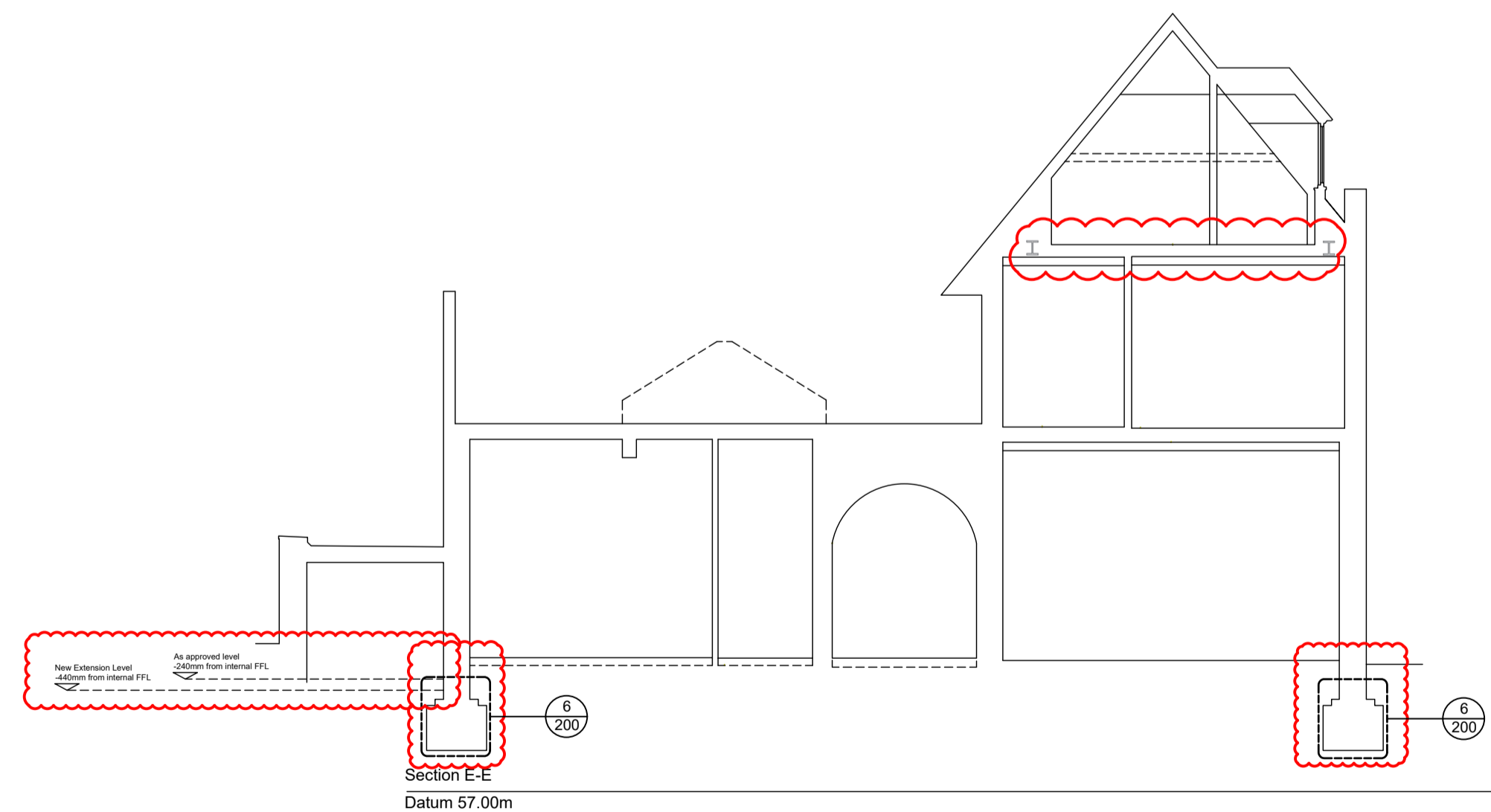
2 - SECTION B-B



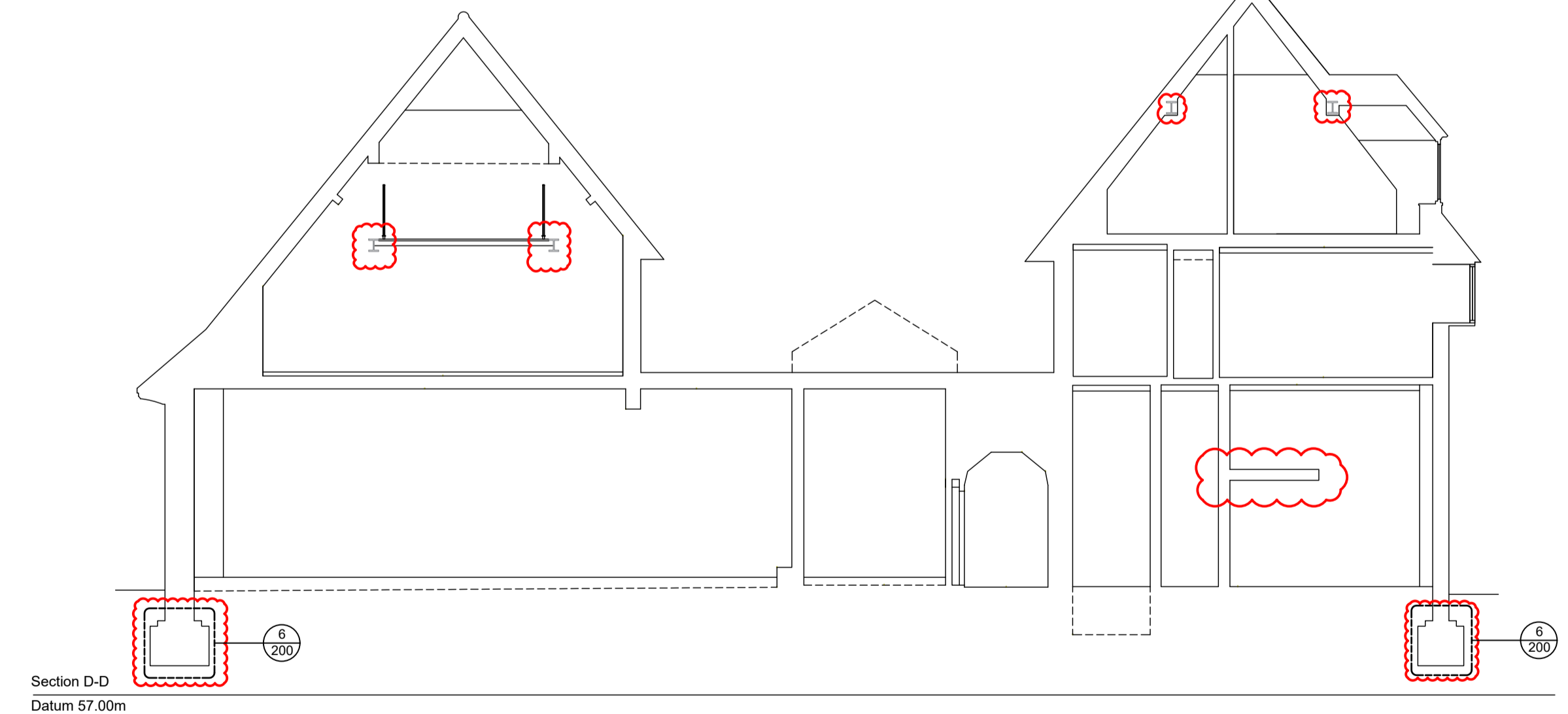
2 - SECTION C-C



6 - INDICATIVE EXISTING FOOTING DIMENSIONS 1:10 @A1



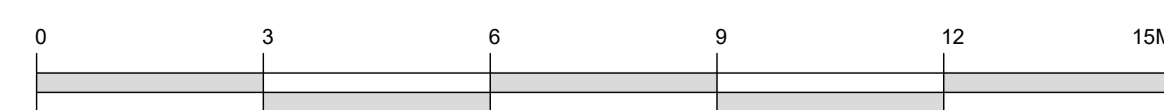
4 - SECTION E-E



5 - SECTION D-D

NOTE:
Existing basement footings indicative and may vary.
Detail based on footings uncovered during works to basement and side extension.

Revisions					Revisions						
Rev	Date	By	Description	Checked	Approved	Rev	Date	By	Description	Checked	Approved
P1	08.01.17	ABF	DS&P Preliminary Issue	LP	RH						
P2	12.13.18	TS	Design Updates	JM	RH						
P3	06.06.19	QJ	NMA Re-issue	ABF	RH						
P4	13.06.19	QJ	NMA Re-issue - Rev Cloud Updates	RB	RH						
P5	17.06.19	QJ	NMA Re-issue - Design Updates	RB	RH						



North ↑	Client: Tate Harmer	Unit G182, Stamford Works, 3 Gilbert Street, London N16 8JH Tel: +44 (0)207 241 7481 Email: studio@tateharmer.com	Do not scale. All dimensions to be checked on site. This drawing is copyright.
	Project: Platinum Land	8 Quagga House, 1 Duke of York Square, Kings Road, London, SW3 4LY	Date of Origin: 28.11.17
Client Sign Off	Proposed Sections	Scale: 1:100	Drawn By: TS
	Drawing Number: BFS THA PR AL 200 P5	Revision: P5	Drawing Status: Planning