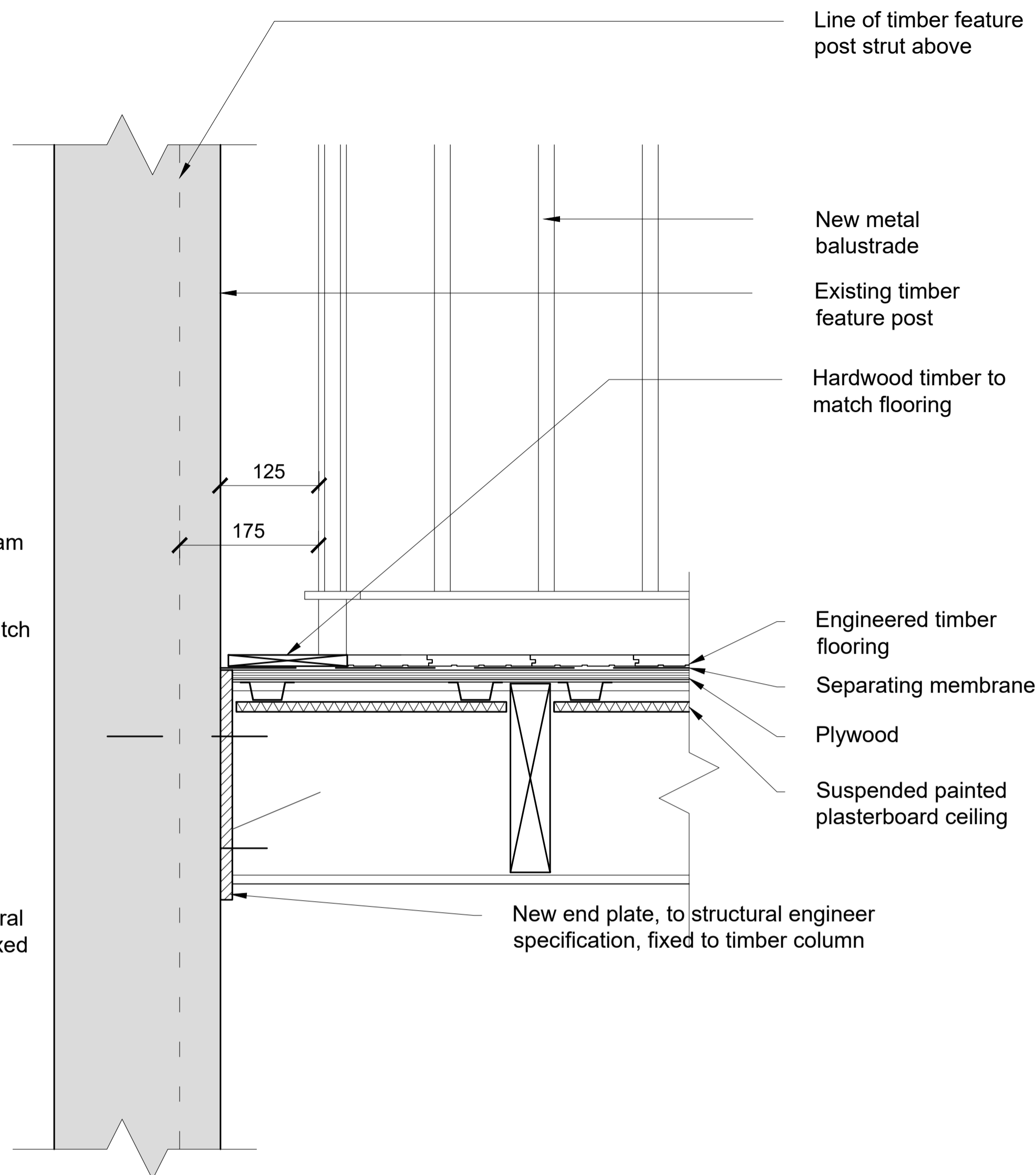
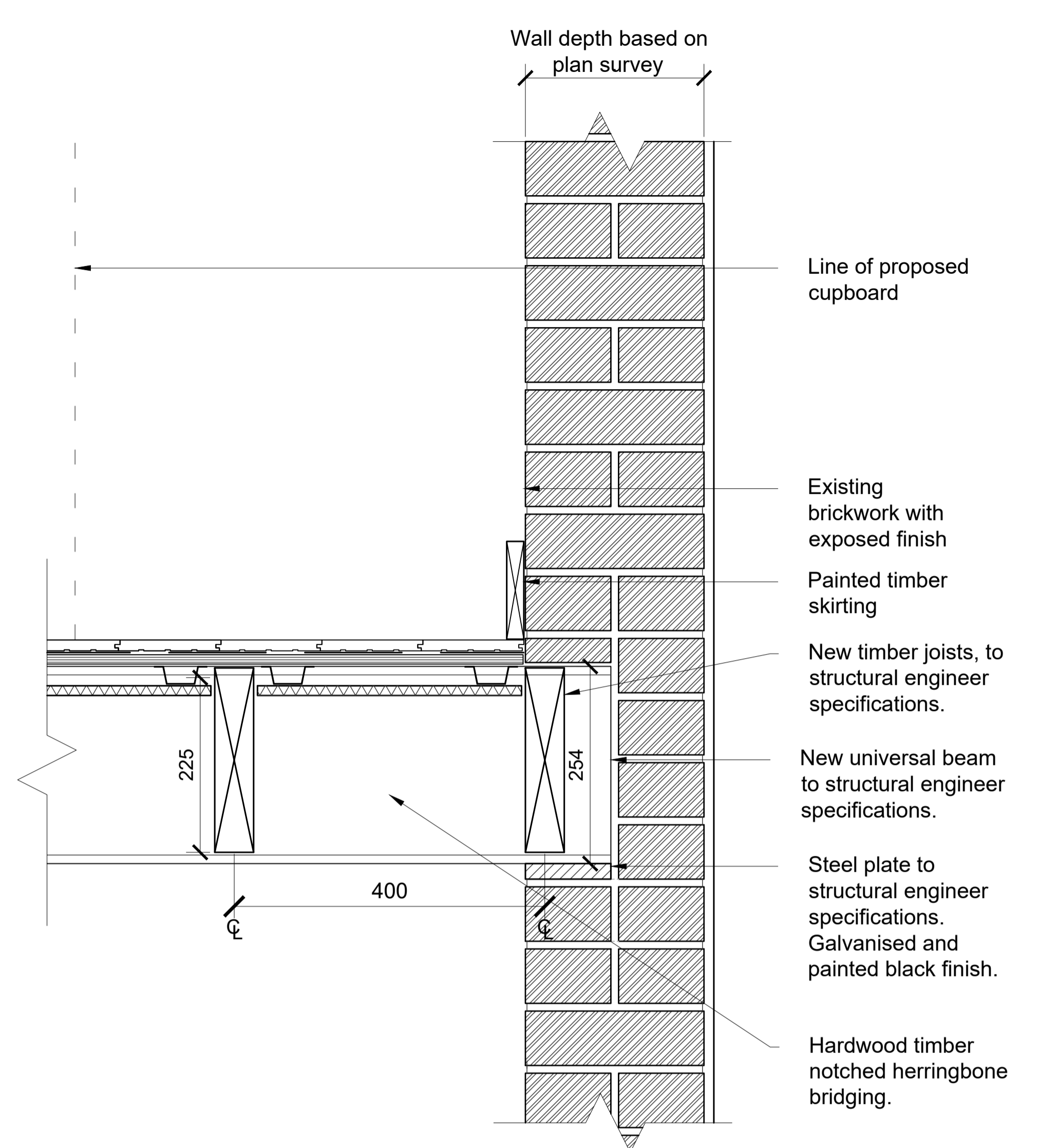


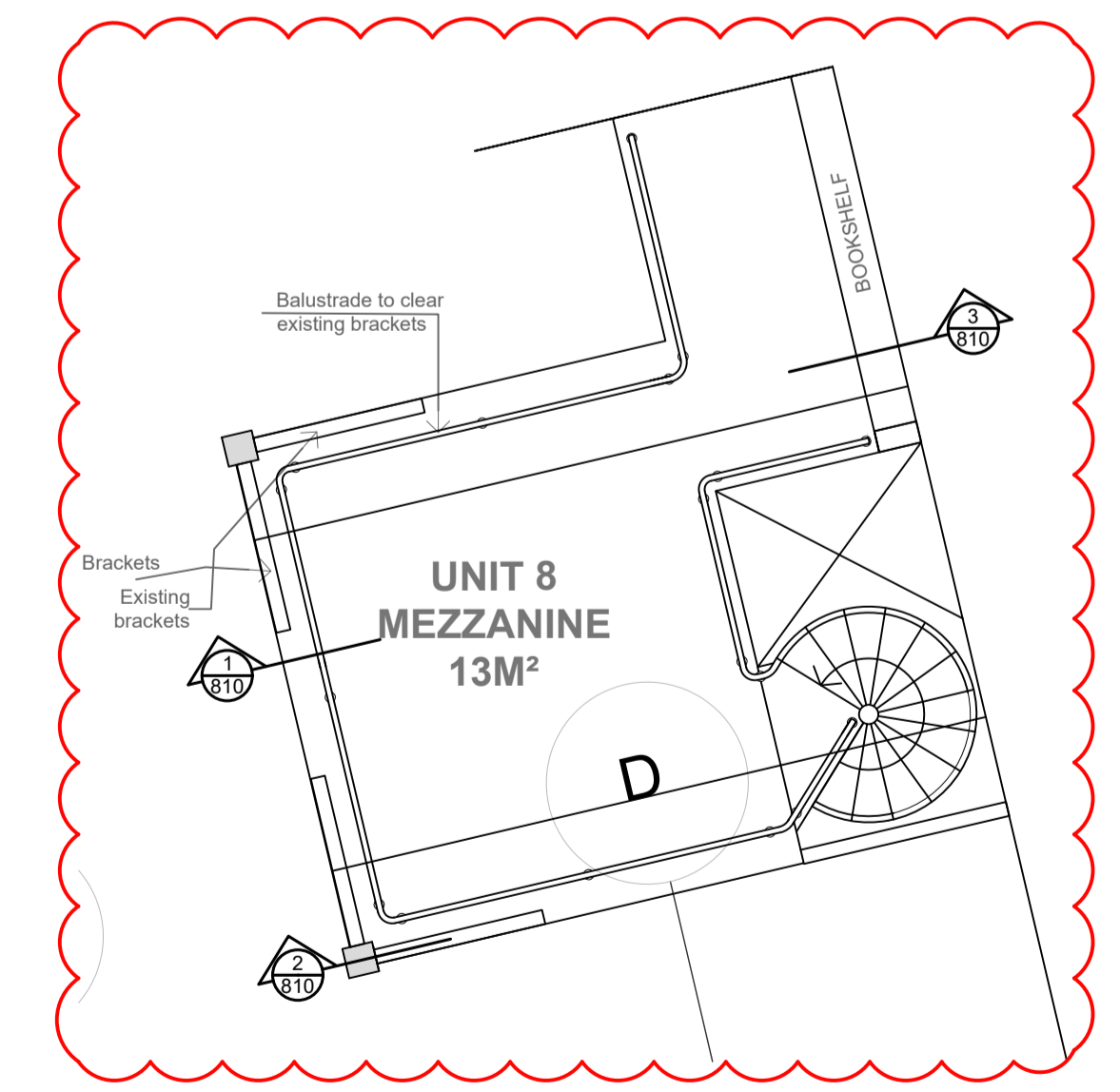
**1 - MEZZANINE SECTION DETAIL:
BALUSTRADE AND MEZZANINE EDGE**



**2 - MEZZANINE SECTION DETAIL:
EXISTING TIMBER COLUMN**



**3 - MEZZANINE SECTION DETAIL:
EXISTING WALL**



MEZZANINE KEY PLAN 1:50

List of changes from consented scheme:

- Mezzanine layout amendments

Revisions		Revisions	
Rev	Date	By	Description
P1	01.03.18	RB	Planning Conditions Discharge
P2	08.03.18	RB	Planning Conditions Discharge
P3	06.06.19	QJ	NMA Issue
P4	13.06.19	QJ	NMA Re-issue - Rev Cloud Updates

Architect / Originator: Tate Harmer	Unit G182, Stamford Works, 3 Gillet Street, London N16 6JH Tel: +44 (0)207 241 7481 Email: studio@tateharmer.com	Do not scale. All dimensions to be checked on site. This drawing is copyright.
Client: Platinum Land	8 Quercet House, 1 Duke of York Square, Kings Road, London, SW3 4LY	Date of Origin: 28.11.17 Drawn By: TS
Project: Belsize Park Firestation		Scale: 1:5
Drawing Title: Apartment 8 Mezzanine Floor Detail		Drawing Status: Planning
Client Sign Off	Drawing Number: BFS THA PR AL 810 P4	