

# Frognal Way 22, London NW3

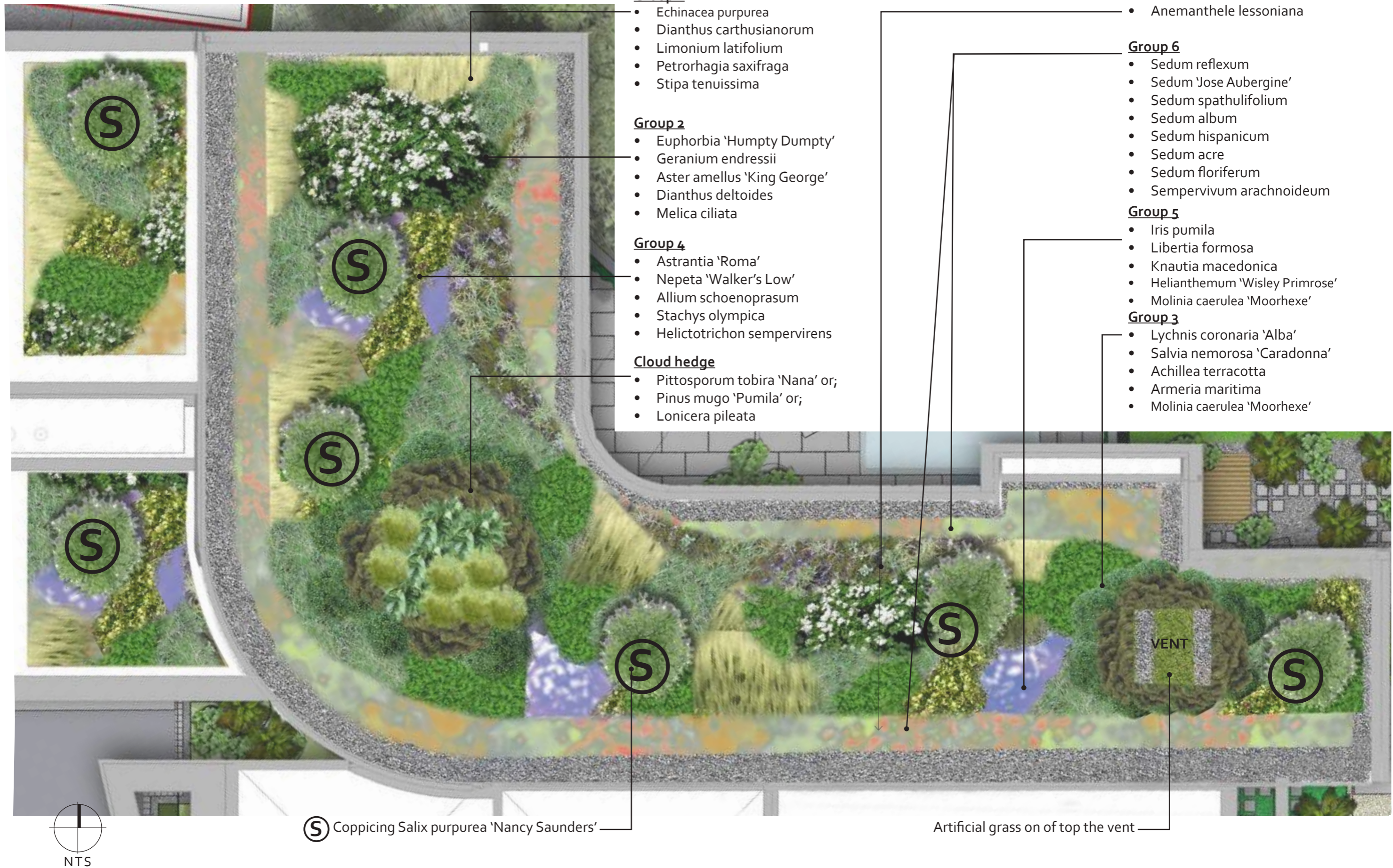
Green Roof Planting Palette Report

RS-RP-003 Rev B

June 2019



# I.I Planting plan





# I.2 Planting palette

## Clipped hedges



Lonicera pileata



Pittosporum tobira 'Nana'



Pinus mugo 'Pimilio'



Pinus mugo 'Pimilio'

## Shrubs



Salix purpurea 'Nancy Saunders'



Phlomis fruticosa



Bupleurum fruticosum



Anemanthele lessoniana

## Perennials and herbaceous planting



Helictotrichon sempervirens



Melica ciliata



Molinia caerulea 'Moorhexe'



Stipa tenuissima



Echinacea purpurea



Dianthus carthusianorum



Limonium latifolium



Petrorhagia saxifraga



Euphorbia 'Humpty Dumpty'



Geranium endressii



Aster amellus 'King George'



Dianthus deltoides



Perennials and herbaceous planting



Lychnis coronaria 'Alba'



Astartia 'Roma' AGM



Iris pumila



Salvia nemorosa 'Caradonna'



Nepeta 'Walker's Low'



Knautia macedonica



Achillea terracotta



Allium schoenoprasum



Libertia formosa



Armeria maritima



Stachys olympica



Helianthemum 'Wisley Primrose'

Sedums



Sedum reflexum



Sedum hispanicum



Sedum 'Jose Aubergine'



Sedum acre



Sedum spathulifolium



Sedum floriferum



Sedum album



Sempervivum arachnoideum



# I.2 Planting list

## Group 1

- Echinacea purpurea
- Dianthus carthusianorum
- Limonium latifolium
- Petrorhagia saxifraga
- Stipa tenuissima

## Group 2

- Euphorbia 'Humpty Dumpty'
- Geranium endressii
- Aster amellus 'King George'
- Dianthus deltoides
- Melica ciliata

## Group 3

- Lychnis coronaria 'Alba'
- Salvia nemorosa 'Caradonna'
- Achillea terracotta
- Armeria maritima
- Molinia caerulea 'Moorhexe'

## Group 4

- Astrantia 'Roma'
- Nepeta 'Walker's Low'
- Allium schoenoprasum
- Stachys olympica
- Helictotrichon sempervirens

## Group 5

- Iris pumila
- Libertia formosa
- Knautia macedonica
- Helianthemum 'Wisley Primrose'
- Molinia caerulea 'Moorhexe'

## Group 6

- Sedum reflexum
- Sedum 'Jose Aubergine'
- Sedum spathulifolium
- Sedum album
- Sedum hispanicum
- Sedum acre
- Sedum floriferum
- Sempervivum arachnoideum

## Group 7

- Coppicing Salix purpurea 'Nancy Saunders'
- Anemanthele lessoniana