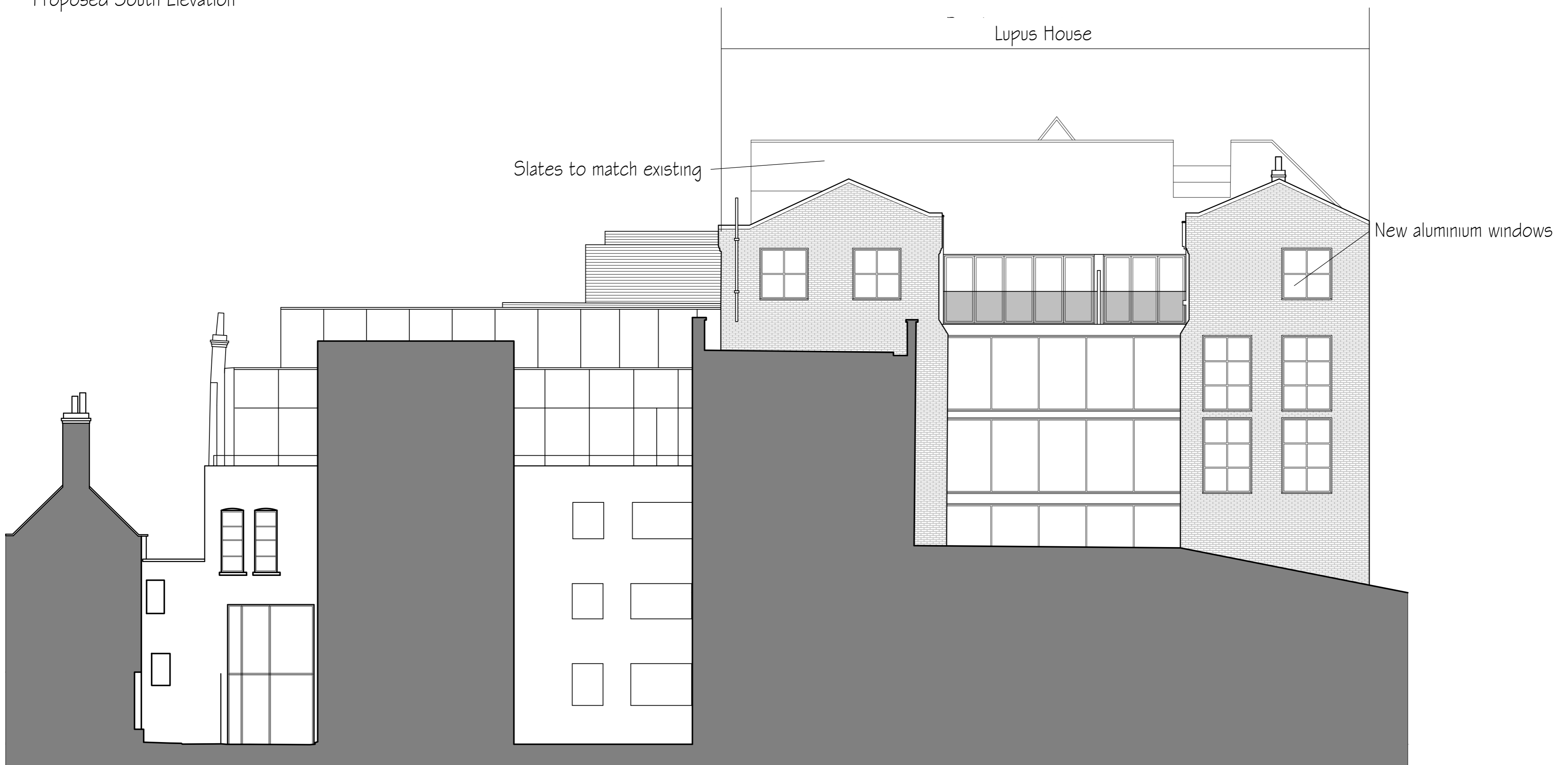
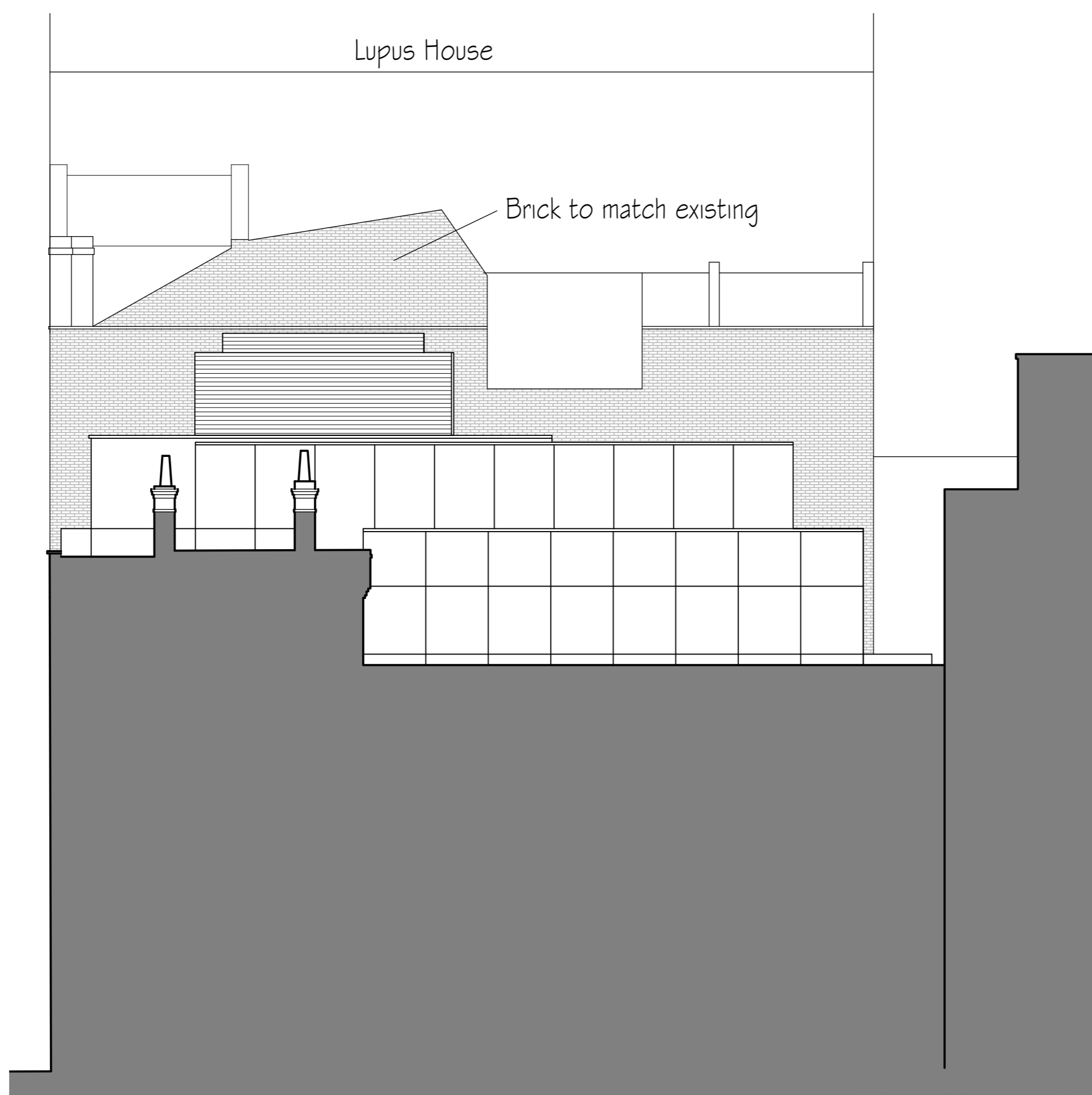




Proposed South Elevation



Proposed North Elevation



Proposed East Elevation

E	10/07/19	Material notes added	IBC
D	13/04/19	Window removed, roof pitch updated	IBC
C	19/03/19	Roof pitch updated	IBC
B	14/01/19	Design updated	IBC
A	10/01/19	Windows updated, detail added	IBC

BB PARTNERSHIP LTD

CHARTERED ARCHITECTS

Studios 33-34, 10 Hornsey St, London, N7 8EL
 Tel 020 7336 8555 - e-mail - architect@bbpartnership.co.uk

client		
project Lupus House 11-13 Macklin Street London WC2 5NE		
drawing Proposed Elevations		
date 11/18	scale 1:100@A1/1:200@A3	drawn by BC
drg.no. FYS_202	revision E	