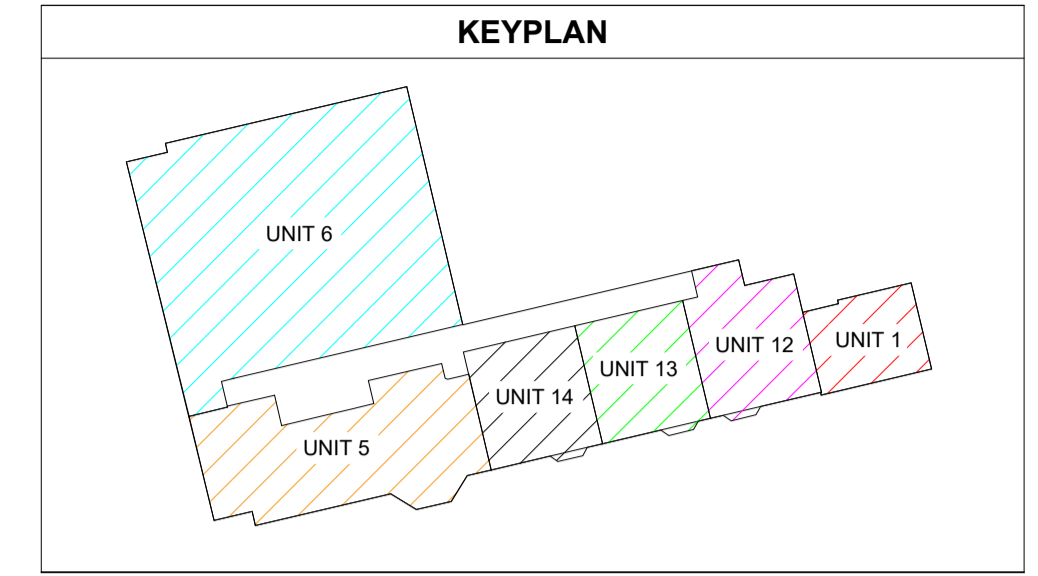


50x50mm GALVANISED STEEL CABLE TRAY FOR COMBINED ELV
 50x50mm GALVANISED STEEL CABLE TRAY LV SUB-MAINS

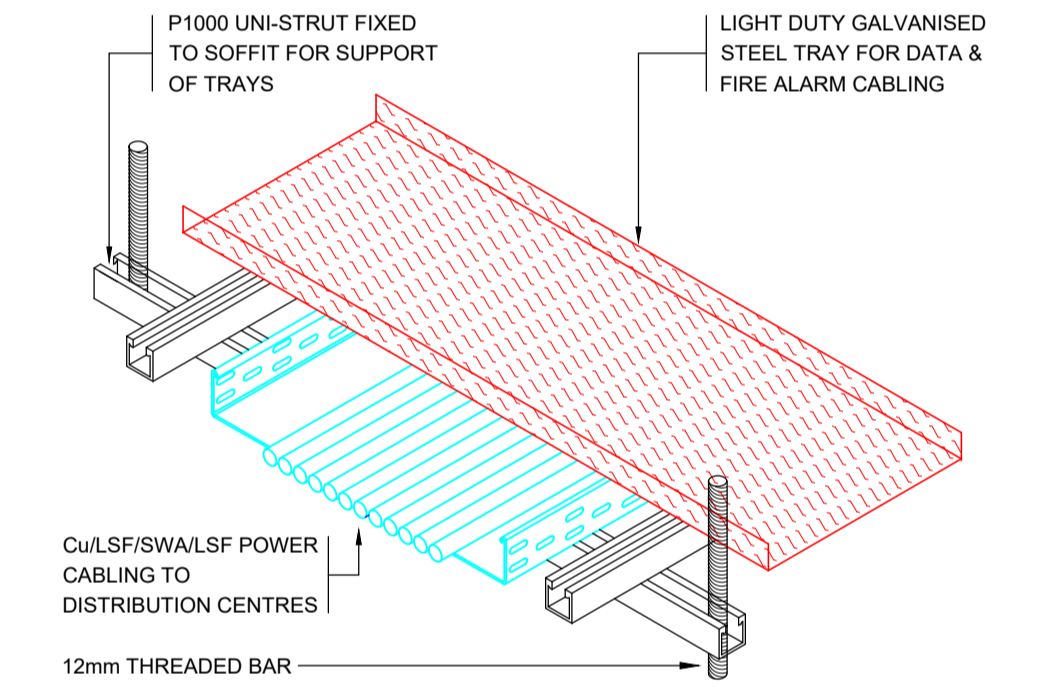


NOTES

- 1.00 THIS DRAWING IS REPRESENTATIVE OF PRIMARY CONTAINMENT INSTALLATIONS. ANY ADDITIONAL CABLE CONTAINMENT OR CONDUIT RUNS REQUIRED BY THE SPECIFICATION OR REQUIRED BY THE CONTRACTOR TO PROVIDE A COMPLETE INSTALLATION WILL BE DEEMED TO BE INCLUDED.
- 2.00 THIS DRAWING IS TO READ IN CONJUNCTION WITH ALL OTHER SERVICES INSTALLATION DRAWINGS AND WITH CO-ORDINATED MECHANICAL AND ELECTRICAL DRAWINGS PREPARED BY IN2 ENGINEERING DESIGN PARTNERSHIP.
- 3.00 ALL CABLE CONTAINMENT SYSTEMS AT ROOF LEVEL SHALL BE OF GALVANISED STEEL CONSTRUCTION RAISED "OFF" THE ROOF LEVEL ON UNI-STRUT SUPPORT BRACKETS.
- 4.00 A SPACING OF 300mm WILL BE PROVIDED BETWEEN ALL L.V. POWER DISTRIBUTION CABLE TRAY / LADDER SYSTEMS AND FIRE DETECTION CONTAINMENT SYSTEMS

CABLE CONTAINMENT SYSTEM REFERENCE KEY

- 225x50mm GALVANISED STEEL CABLE TRAY AT HIGH LEVEL FOR SUB-MAINS CABLE INSTALLATION.
- 100x50mm GALVANISED STEEL TRUNKING AT HIGH LEVEL FOR LIGHTING & GENERAL SERVICES.
- 150x50mm COMBINED ELV GALVANISED STEEL CABLE TRAY FOR I.T. STRUCTURED CABLING & FIRE ALARM.



DETAIL OF CABLE TRAY CROSS OVER

CABLE CONTAINMENT RISING TO FLOORS ABOVE:
 1. 100x50 GALVANISED STEEL L&P TRUNKING
 2. 225x50 GALVANISED STEEL LV SUB-MAINS TRUNKING.
 3. 150x50MM COMBINED ELV GALVANISED STEEL CABLE TRAY FOR FIRE ALARM & I.T.

NOTE: ARCHITECTURAL DRAWING USED FOR COMPILATION OF IN2 DRAWING. ARCHITECTURAL DRAWING REVISION: DATE RECEIVED: 14.06.2019

STATUS	DATE	DESCRIPTION	DRN	ENG	APP	REV
S4	18.06.2019	CONSTRUCTION ISSUE	JDT	TH	BF	C2
S4	18.10.2018	CONSTRUCTION ISSUE	KO	TH	BF	C1

IN2
 ENGINEERING DESIGN PARTNERSHIP
 DUBLIN . ATHLONE . BELFAST . LONDON



PROJECT
BELSIZE PARK FIRESTATION
 CLIENT
PLATINUM LAND

DRAWING TITLE
 ELECTRICAL SERVICES INSTALLATION
 GROUND FLOOR LEVEL
 CABLE CONTAINMENT SERVICES LAYOUT

SCALE 1:100 @ A1
 1:200 @ A3
 SIZE **A1**
 PROJECT REF: **L18051**
 DRAWING No. **L18051-IN2-00-00-DR-E-7001**

STATUS
S4
 REVISION
C2