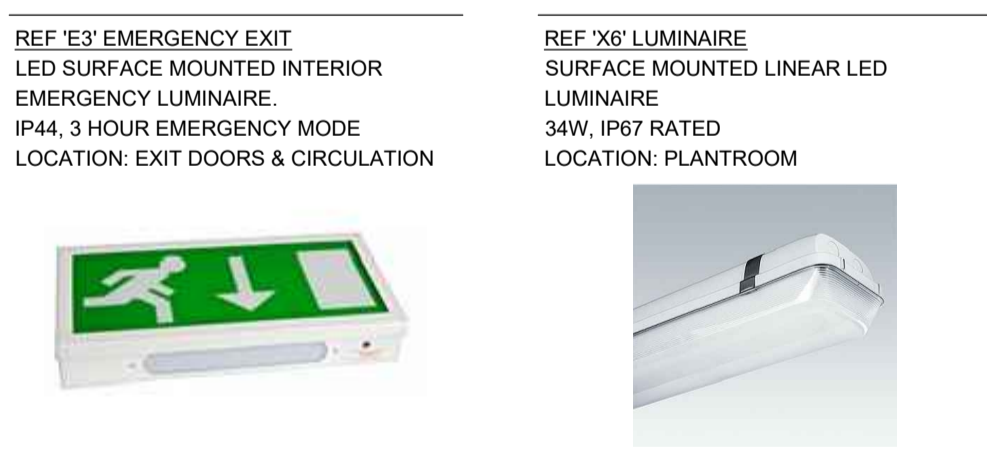
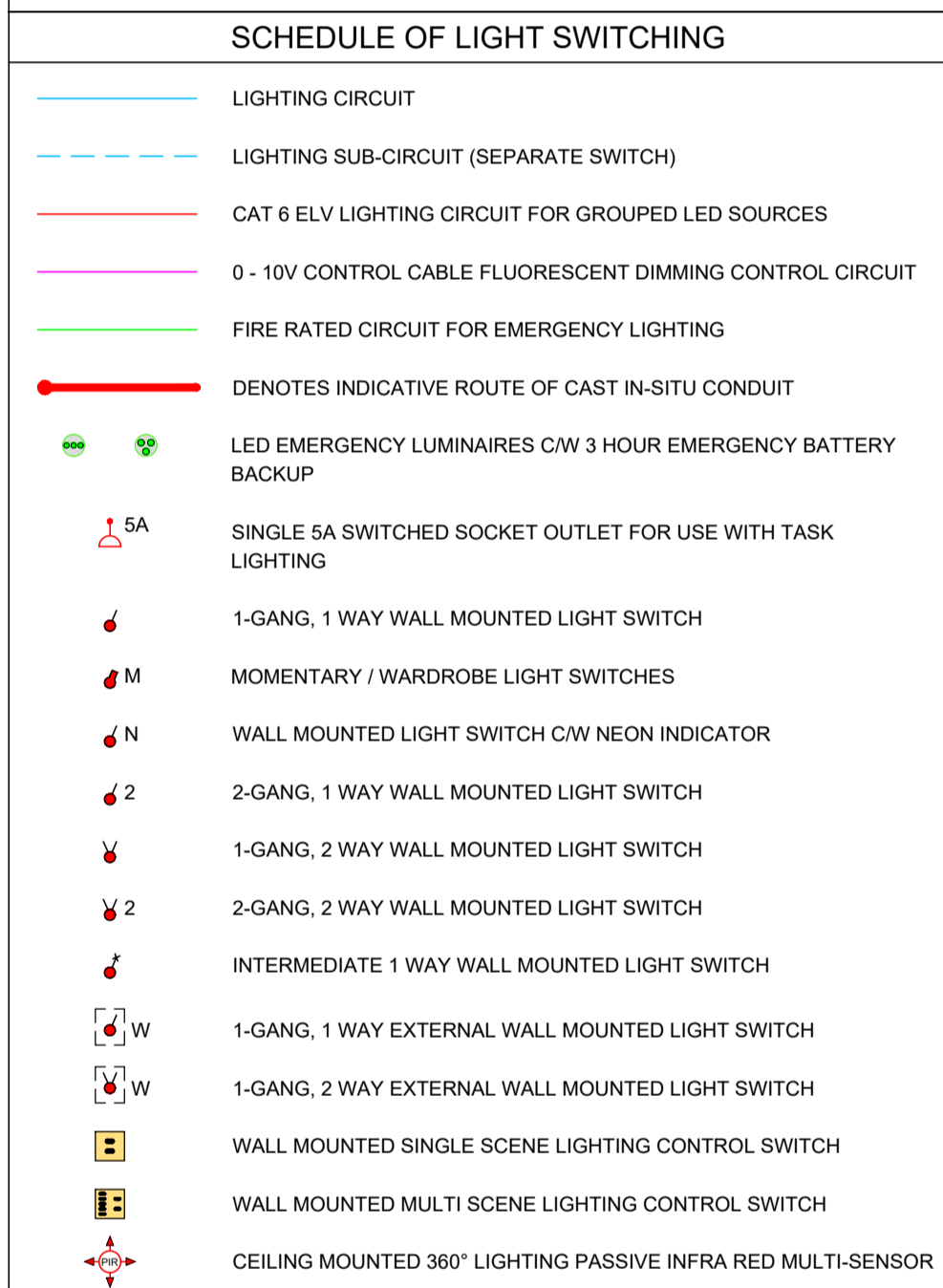


- LIGHTING SERVICES INSTALLATION NOTES**
- ALL LIGHTING CIRCUITS AND CABLING IN APARTMENTS TO BE 1.5mm² T&E IN STUD PARTITIONS AND WALL TO BE CONTAINED IN PVC CONDUIT.
 - CABLING FOR LIGHTING INSTALLATION IN ALL OTHER AREAS TO BE 2.5mm LSF SINGLES IN GALVANISED STEEL CONDUIT OR TRUNKING UNLESS OTHERWISE INDICATED.
 - EACH LUMINAIRE TO HAVE A DEDICATED "CLICK" TYPE CONNECTOR TO BE LOCATED NO MORE THAN 500mm FROM THE LUMINAIRE. THE CONNECTION BETWEEN THE "CLICK" & THE LUMINAIRE SHALL BE IN 1.5mm² PVC/LSOH FLEX.
 - WHERE EXIT SIGNS ARE INDICATED WITH A GENERAL LIGHTING LUMINAIRE THE SIGN SHALL BE PROPRIETARY TO AND COMPLETELY INTEGRATED WITH THAT LUMINAIRE.
 - ALL LIGHTING IN CORRIDOR AREAS TO BE SWITCHED AND CONTROLLED BY THE LIGHTING / CONTROL MODULES. REFER TO IN2 Dtg. No. E1180 LIGHTING SCHEMATIC.
 - THE ELECTRICAL CONTRACTOR SHALL BE RESPONSIBLE FOR ENSURING THAT ALL LUMINAIRES SPECIFIED COME COMPLETE WITH PLASTER MOUNTING KITS, RECESSING BOXES, FIXING CLIPS, LAMPS AND DRIVERS.
 - LAYOUTS SUBJECT TO CHANGE (PARTICULARLY FURNITURE / P1 & P2 LOCATIONS)



<p>REF 'A1' LUMINAIRE CEILING RECESSED LED DOWNLIGHT. 7.6 W, 500lm-3000lm, 2700K-4000K, CR180+. 80mm (W) x 81mm (D) OPTIONAL: 3HR MAINTAINED EMERGENCY BACK UP, DIMMING CONTROL, DALI. LOCATION: CIRCULATION</p> 	<p>REF 'A2' LUMINAIRE CEILING RECESSED IP65 LED DOWNLIGHT. 7.6 W, 500lm-3000lm, 2700K-4000K, CR180+. 80mm (W) x 81mm (D) LOCATION: BATHROOMS & W/C'S</p> 	<p>REF 'B1E' LUMINAIRE WALL MOUNTED IP65 LED. 15 W, 454lm. 300mm (W) x 180mm (H) x 140mm (D)</p> 	<p>REF 'C1' LUMINAIRE SHIELDED WALL LUMINAIRE. 5.6W, 4701lm. 170mm x 80mm x 110mm</p> 	<p>REF 'L1' LUMINAIRE RECESSED LINEAR LED STRIP KITCHEN: IP65 BATHROOM: IP20 WATTS VARY ON LENGTH. OPTIONAL: IP RATING, CASING TYPES. LOCATION: APARTMENT FURNITURE</p> 	<p>REF 'L2' LUMINAIRE BATHROOM WALL MOUNTED 16W, IP65 RATED. LOCATION: MIRROR LIGHT</p> 	<p>REF 'P1' LUMINAIRE FIXED LED PENDANT. 9/10 W, 500lm-700lm, 2700K, CR190. OPTIONAL: DIMMING CONTROL, CORD LENGTH, GLASS COLOUR, RETROFIT LED. LOCATION: APARTMENT DINING AREA</p> 	<p>REF 'P2' LUMINAIRE FIXED INDUSTRIAL LIGHTS SALVAGED FROM TRAIN WORKSHOP. Ø400mm, 620mm (H) LOCATION: COMMUNAL STAIRCASE, UNIT 8 & UNIT 8</p> 	<p>REF 'X3' LUMINAIRE EXTERNAL WALL MOUNTED LED. 14 W, IP65 RATED. LOCATION: ADJACENT TO EXTERNAL ENTRANCES</p> 	<p>REF 'X5' LUMINAIRE WALL RECESSED LED 6W, IP67 RATED LOCATION: BRICK LIGHT</p> 
--	--	---	---	---	---	---	---	---	--

NOTE: ARCHITECTURAL DRAWING USED FOR COMPILATION OF IN2 DRAWING. ARCHITECTURAL DRAWING REVISION: DATE RECEIVED: 14.06.2019

STATUS	DATE	DESCRIPTION	DRN	ENG	APP	REV
S4	18.06.2019	CONSTRUCTION ISSUE	JDT	TH	BF	C2
S4	18.10.2018	CONSTRUCTION ISSUE	KO	TH	BF	C1

IN2
ENGINEERING DESIGN PARTNERSHIP
DUBLIN . ATHLONE . BELFAST . LONDON




PROJECT
BELSIZE PARK FIRESTATION

CLIENT
PLATINUM LAND

DRAWING TITLE ELECTRICAL SERVICES INSTALLATION GROUND FLOOR LEVEL LIGHTING SERVICES LAYOUT		STATUS S4
SCALE 1:100 @ A1 1:200 @ A3	PROJECT REF: A1 L18051	REVISION C2
DRAWING No. L18051-IN2-00-00-DR-E-1001		