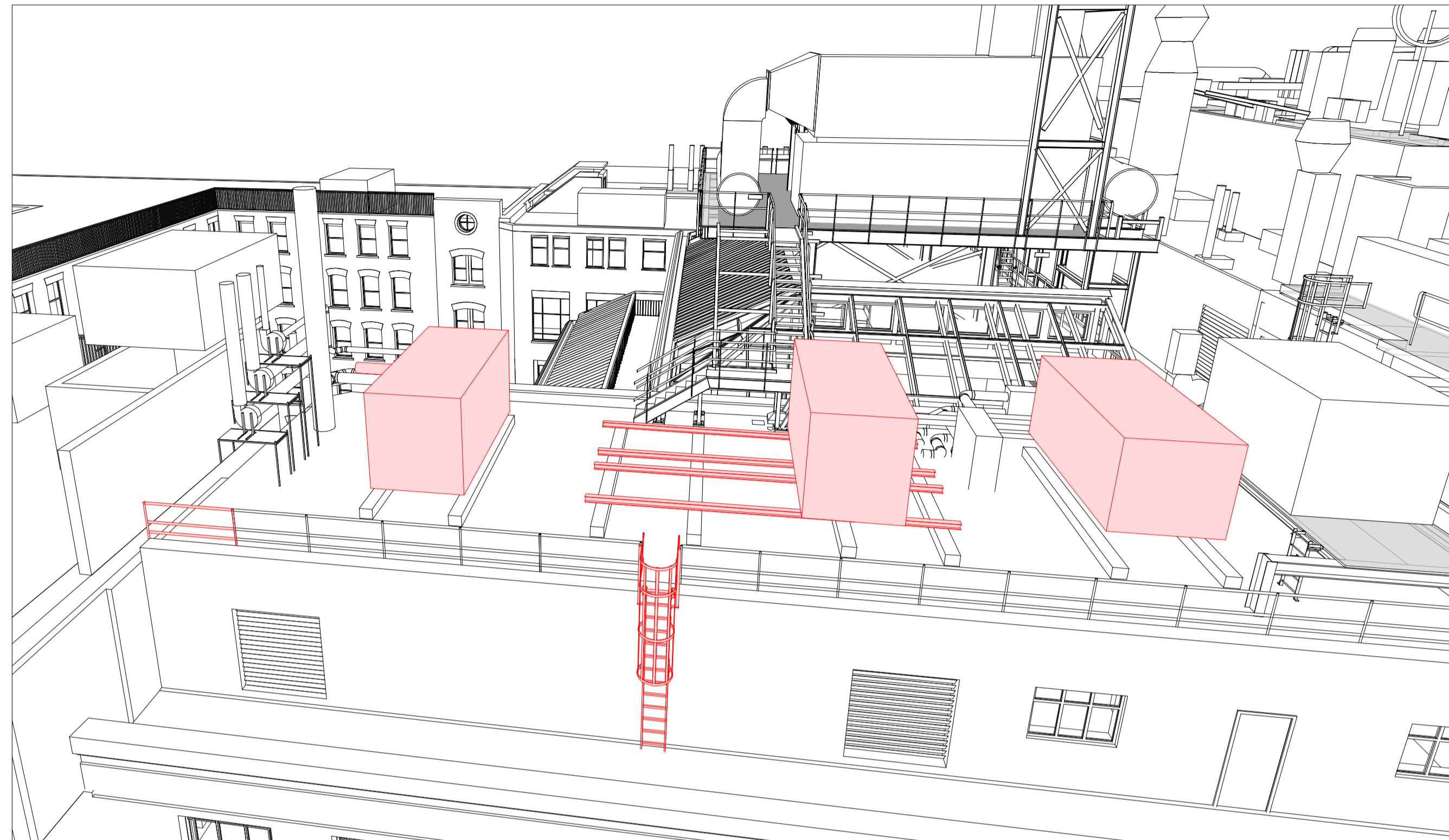


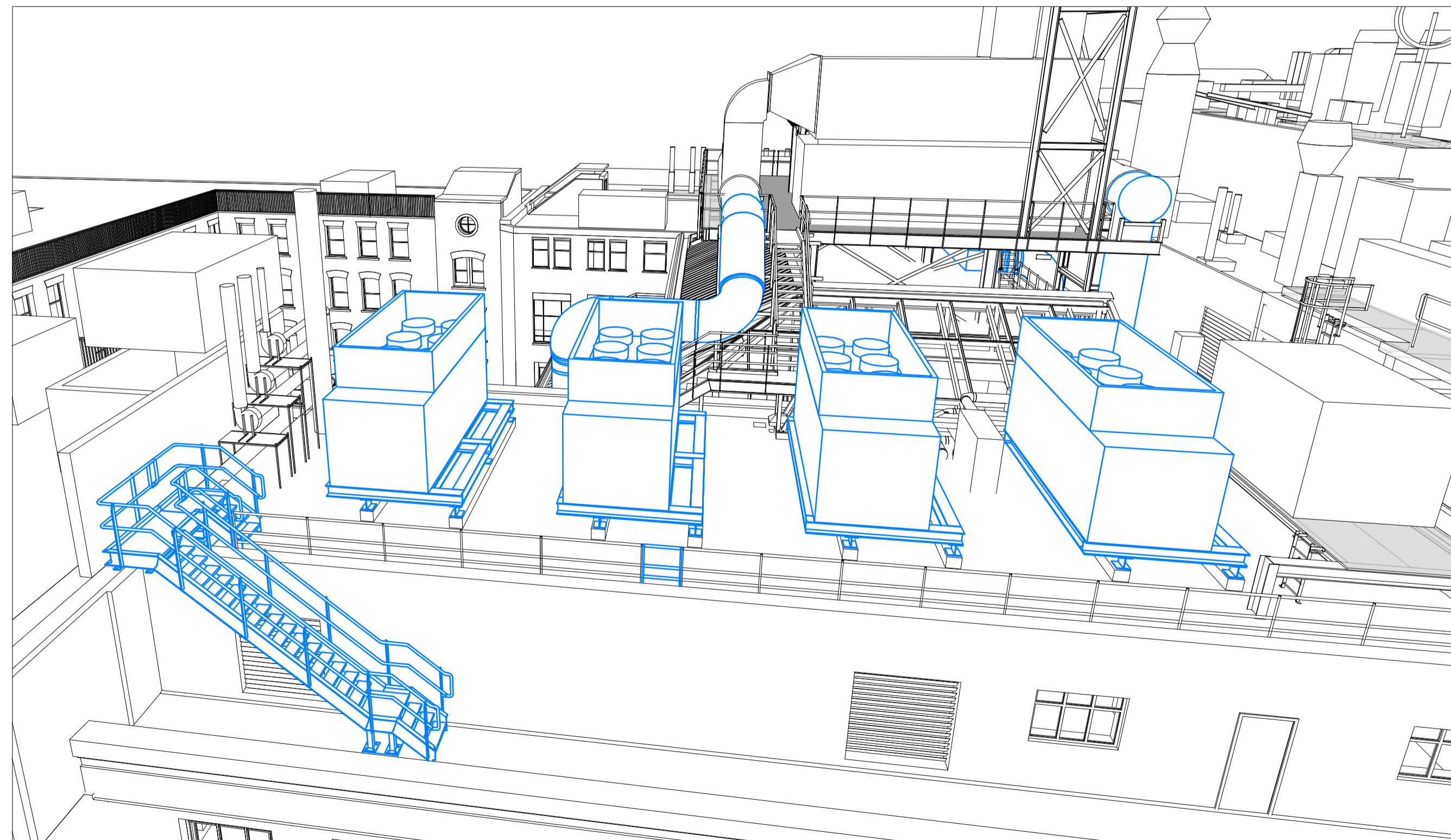
DO NOT SCALE
 THIS DRAWING IS © IAN RITCHE ARCHITECTS LTD
 Dimensions to be verified on site.
 Figured dimensions to take preference to those scaled.
 All discrepancies to be clarified with the project Architect.
 Unless otherwise stated all levels to be AOD.
 This drawing is the property of Ian Ritchie Architects Ltd. and is issued on the condition it is not reproduced, retained or disclosed to any unauthorized person, either wholly or in part without written consent.



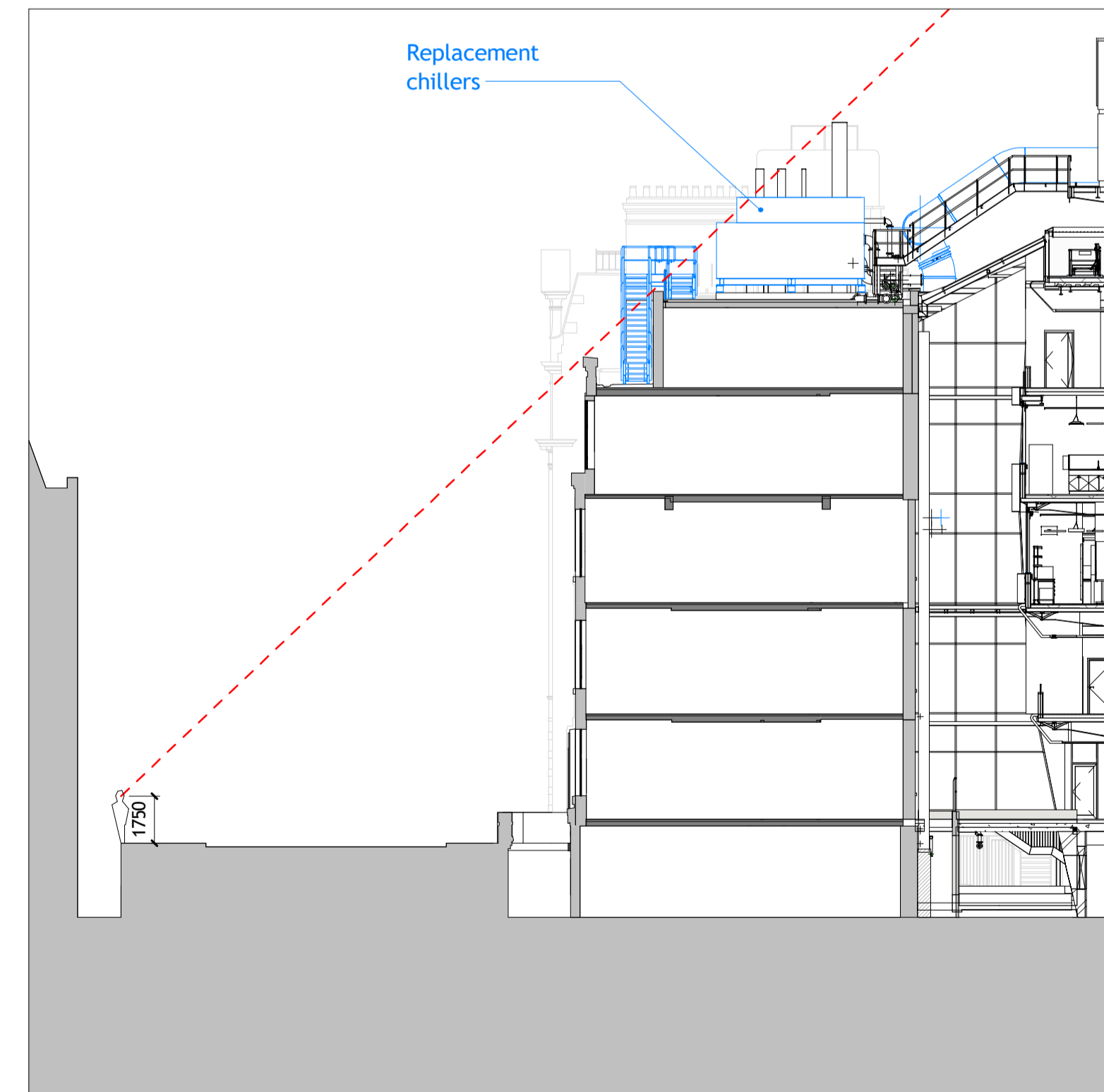
1 3D View Showing Existing Chillers



2 View from Gower Street / Store Street Corner



3 3D View Showing Proposed Chillers



4 Section Indicating View Cone From Opposite Side of Gower Street
 1 : 200

3A	28.06.19	TR	CR	AS	Issued for Planning
Rev	Date	By	Ck	Ap	Description
Job Title					
LONDON SCHOOL OF HYGIENE AND TROPICAL MEDICINE (KEPPEL STREET)					
Drawing Title					
Replacement Chillers Visibility Assessment					
© IAN RITCHE ARCHITECTS LTD. 110 Three Colt Street London E14 8AZ Tel: (44) 2073381100 Fax: (44) 2073381199					
Status					
PLANNING					
Scale			Date		
1 : 200@A1			24.06.19		
Drawn		Checked		Approved	
TR		CR		AS	
Job No.		Drawing No.		Rev.	
739		739-IRAL-02-08-7001		3A	