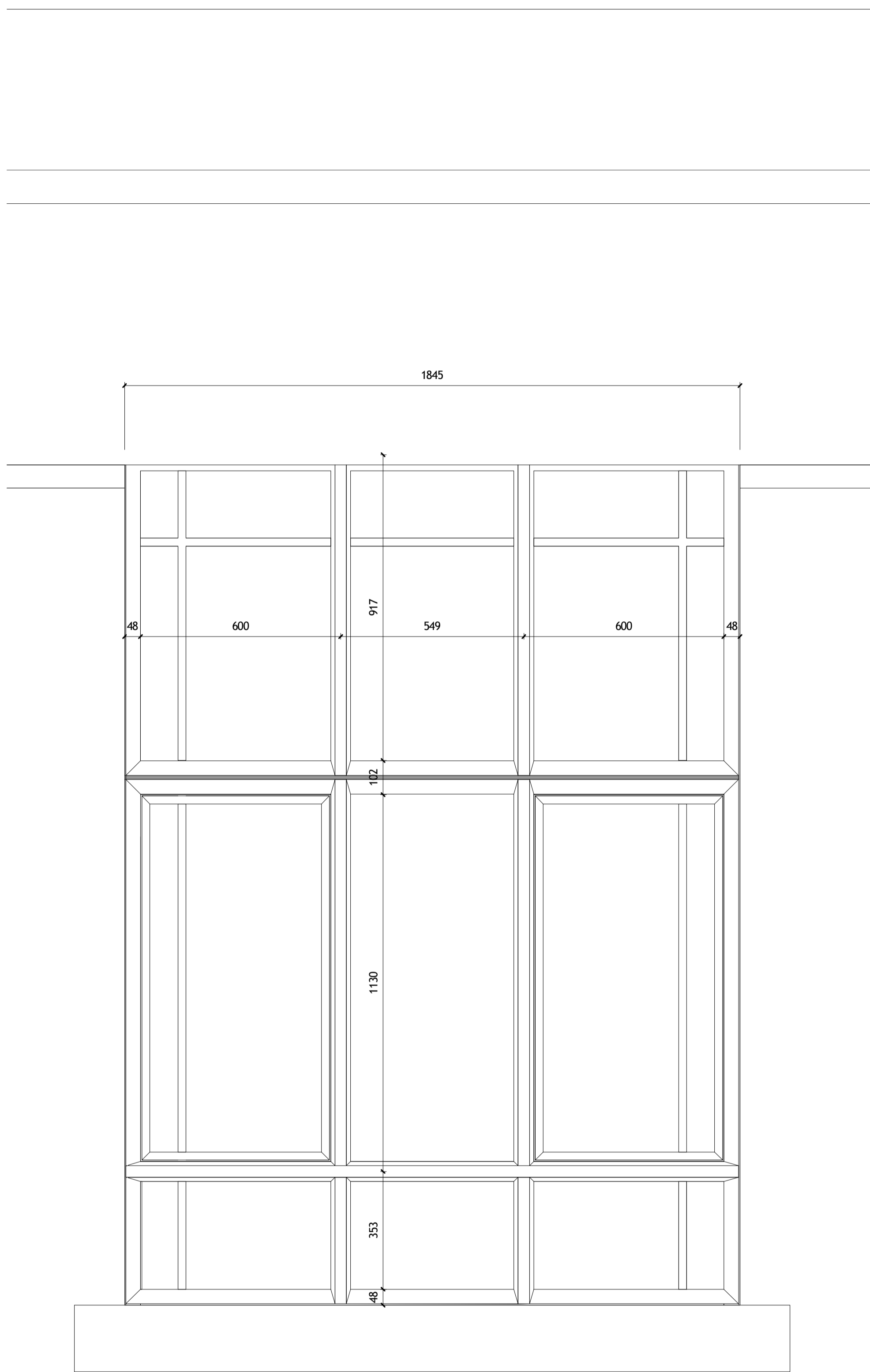


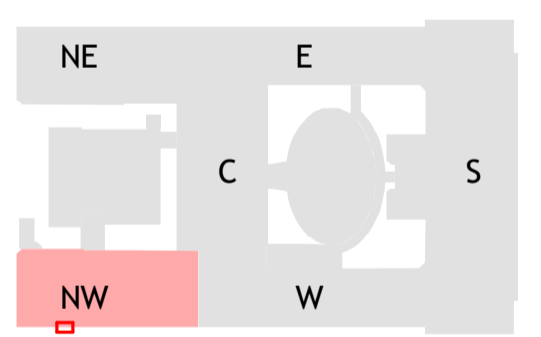
1 Existing Windows - Detail Section
1 : 10

2
08-3001



2 Existing Windows - Detail Elevation
1 : 10

DO NOT SCALE
THIS DRAWING IS © IAN RITCHE ARCHITECTS LTD
Dimensions to be verified on site.
Figured dimensions to take preference to those scaled.
All discrepancies to be clarified with the project Architect.
Unless otherwise stated all levels to be AOD.
This drawing is the property of Ian Ritchie Architects Ltd. and is issued on the condition it is not reproduced, retained or disclosed to any unauthorized person, either wholly or in part without written consent.



Rev	Date	By	Ck	Ap	Description
3A	28.06.19	TR	CR	AS	Issued for Planning

Job Title
**LONDON SCHOOL OF
HYGIENE AND TROPICAL
MEDICINE (KEPPEL STREET)**

Drawing Title
**Detail Section and
Elevation - Windows
Gower Street - Existing**

© IAN RITCHE ARCHITECTS LTD.
110 Three Colt Street London E14 8AZ
Tel: (44) 2073381100 Fax: (44)
2073381199

Status		
PLANNING		
Scale	Date	
As indicated@A1	24.06.19	
Drawn	Checked	Approved
TR	CR	AS
Job No.	Drawing No.	Rev.
739	739-IRAL-02-08-3001	3A