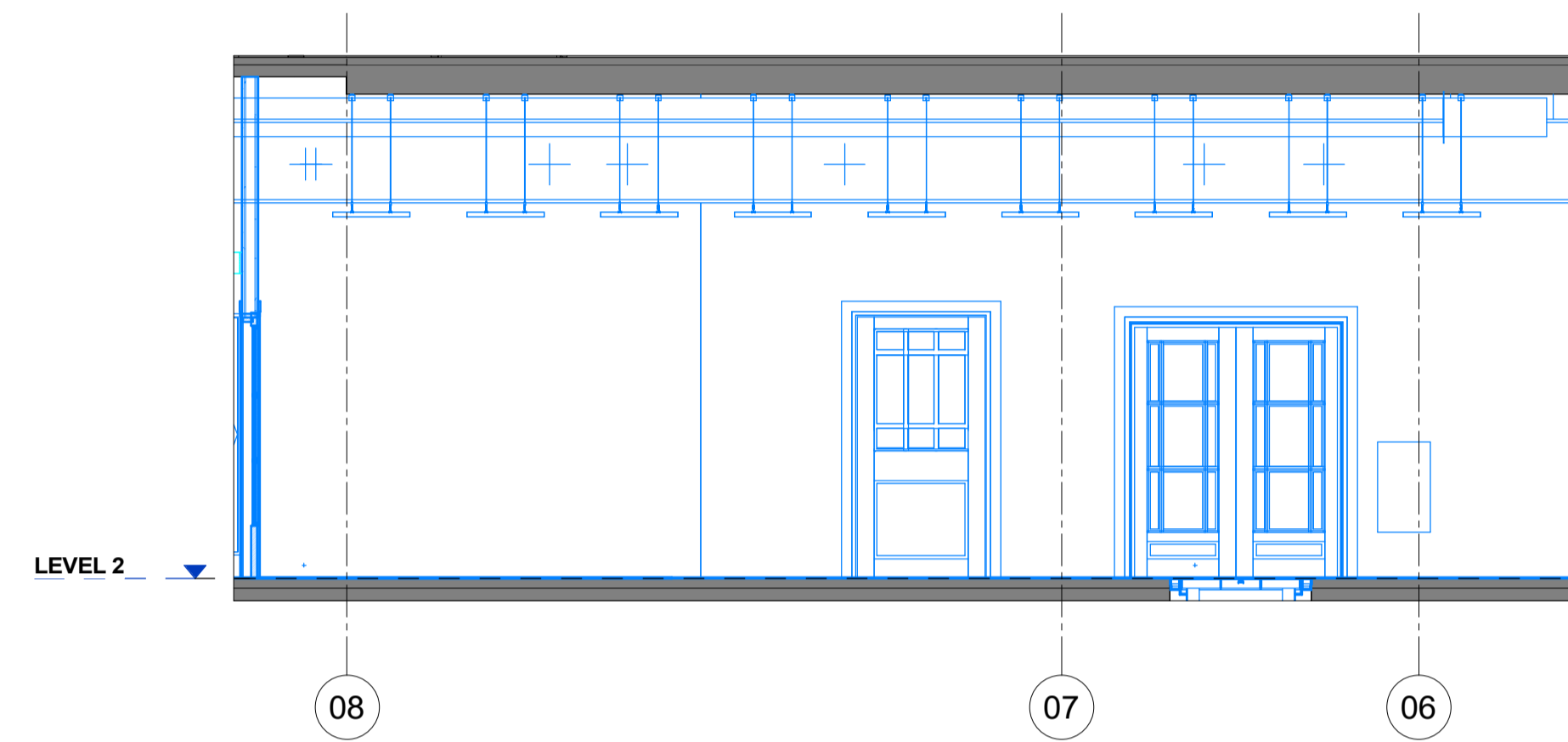


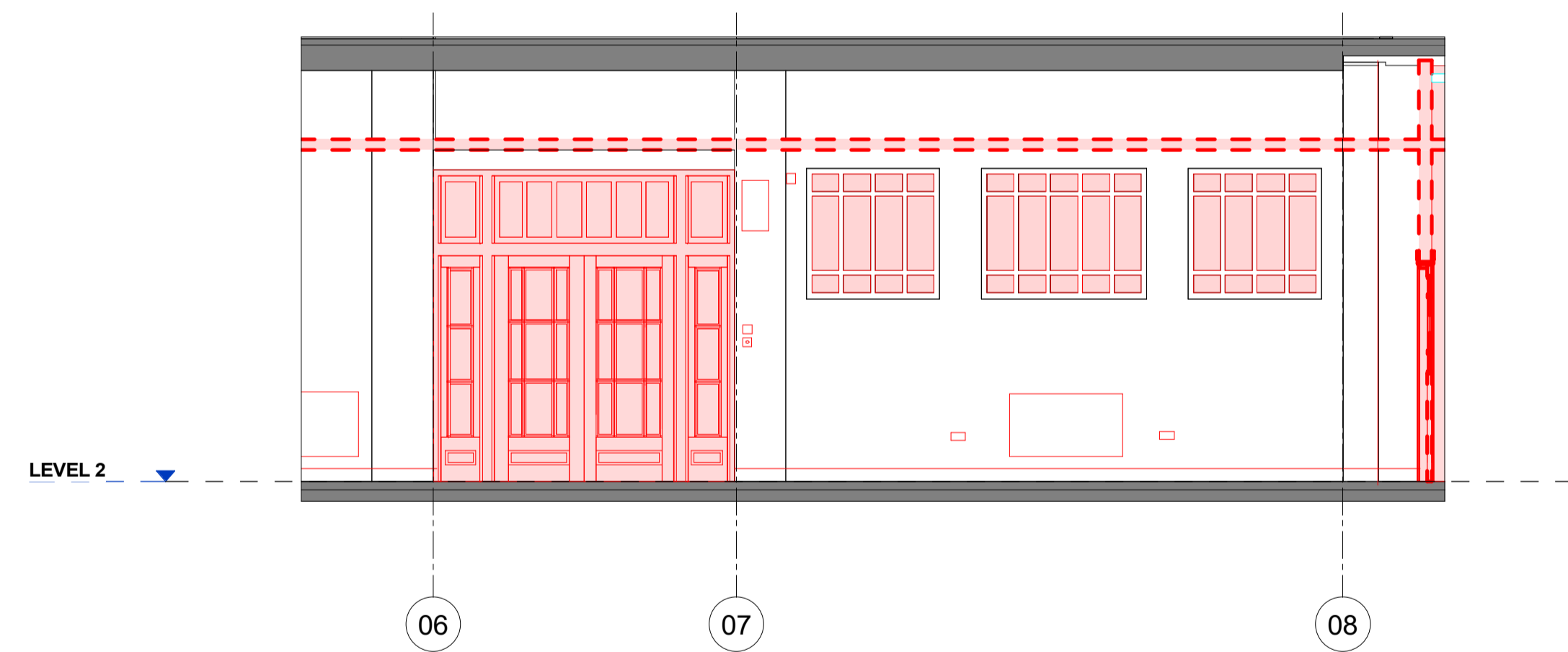
DO NOT SCALE
 THIS DRAWING IS © IAN RITCHE ARCHITECTS LTD
 Dimensions to be verified on site.
 Figured dimensions to take preference to those scaled.
 All discrepancies to be clarified with the project Architect.
 Unless otherwise stated all levels to be AOD.
 This drawing is the property of Ian Ritchie Architects Ltd. and is issued on the condition it is not reproduced, retained or disclosed to any unauthorized person, either wholly or in part without written consent.



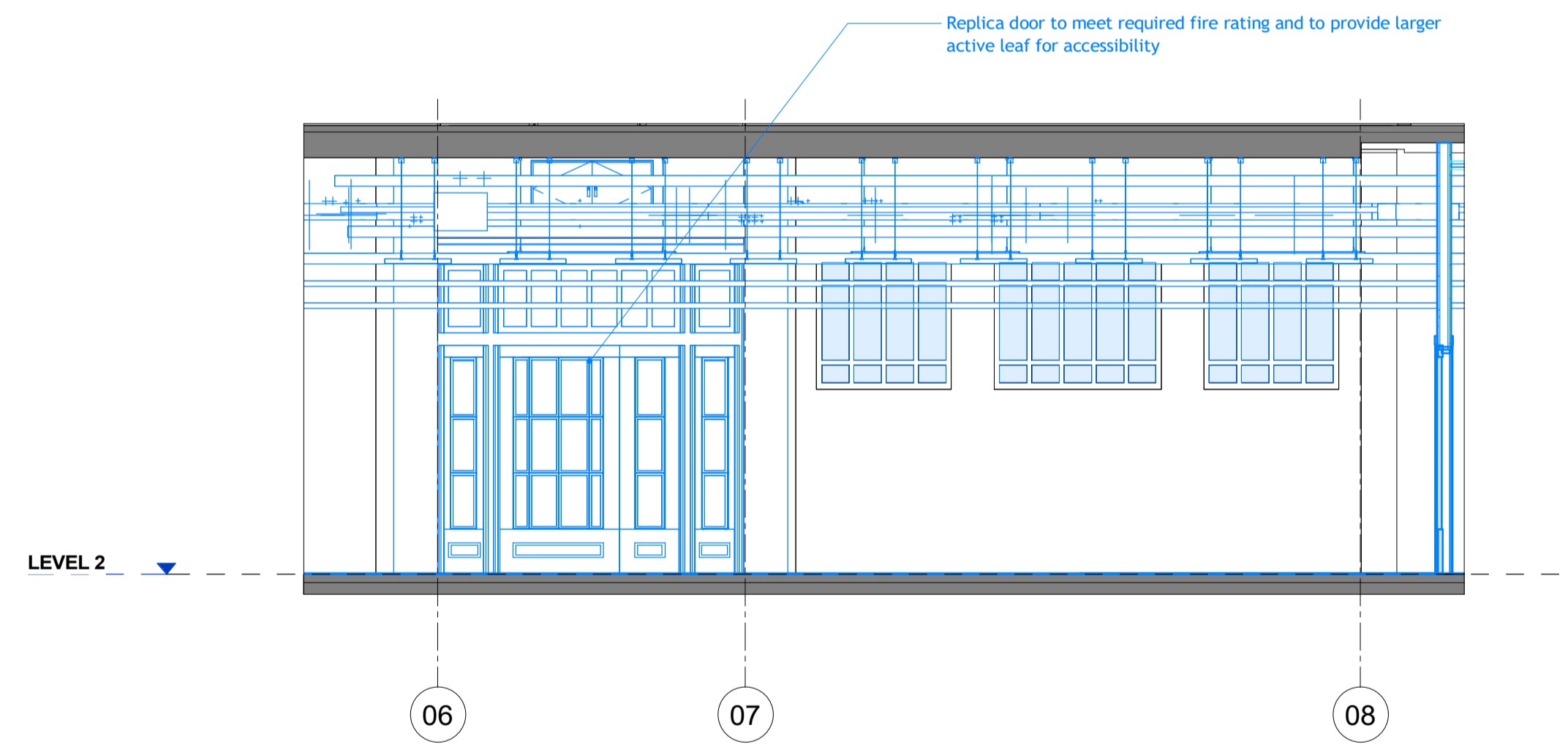
1 Planning Detail Elevation - Existing - West Wing Heritage Corridor - West
 1 : 50



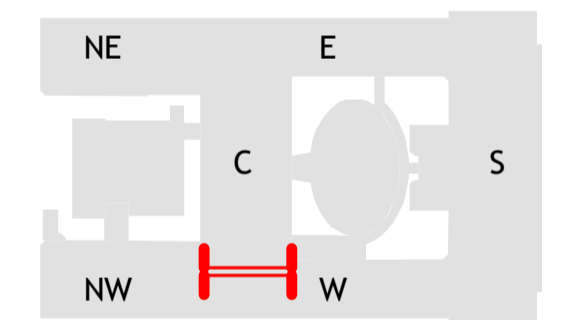
3 Planning Detail Elevation - Proposed - West Wing Heritage Corridor - West
 1 : 50



2 Planning Detail Elevation - Existing - West Wing Heritage Corridor - East
 1 : 50



4 Planning Detail Elevation - Proposed - West Wing Heritage Corridor - East
 1 : 50



Rev	Date	By	Ck	TR	CR	AS	Ap	Description
3A	28.06.19	TR	CR	AS	Issued for Planning			

Job Title
**LONDON SCHOOL OF
 HYGIENE AND TROPICAL
 MEDICINE (KEPPEL STREET)**

Drawing Title
**Detail Sections - Level 2
 - West Wing Heritage
 Corridor**

© IAN RITCHE ARCHITECTS LTD.
 110 Three Colt Street London E14 8AZ
 Tel: (44) 2073381100 Fax: (44)
 2073381199

Status
 PLANNING

Scale
 As indicated@A1

Date
 24.06.19

Drawn
 TR

Checked
 CR

Approved
 AS

Job No.
 739

Drawing No.
 739-IRAL-02-
 08-2501

Rev.
 3A