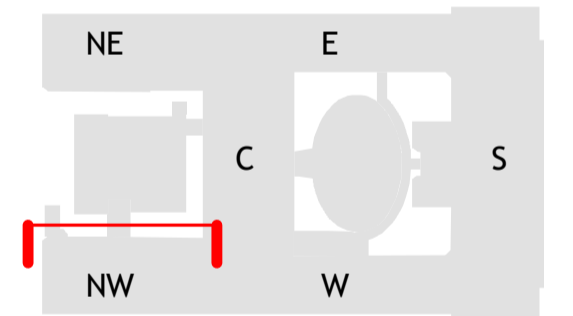
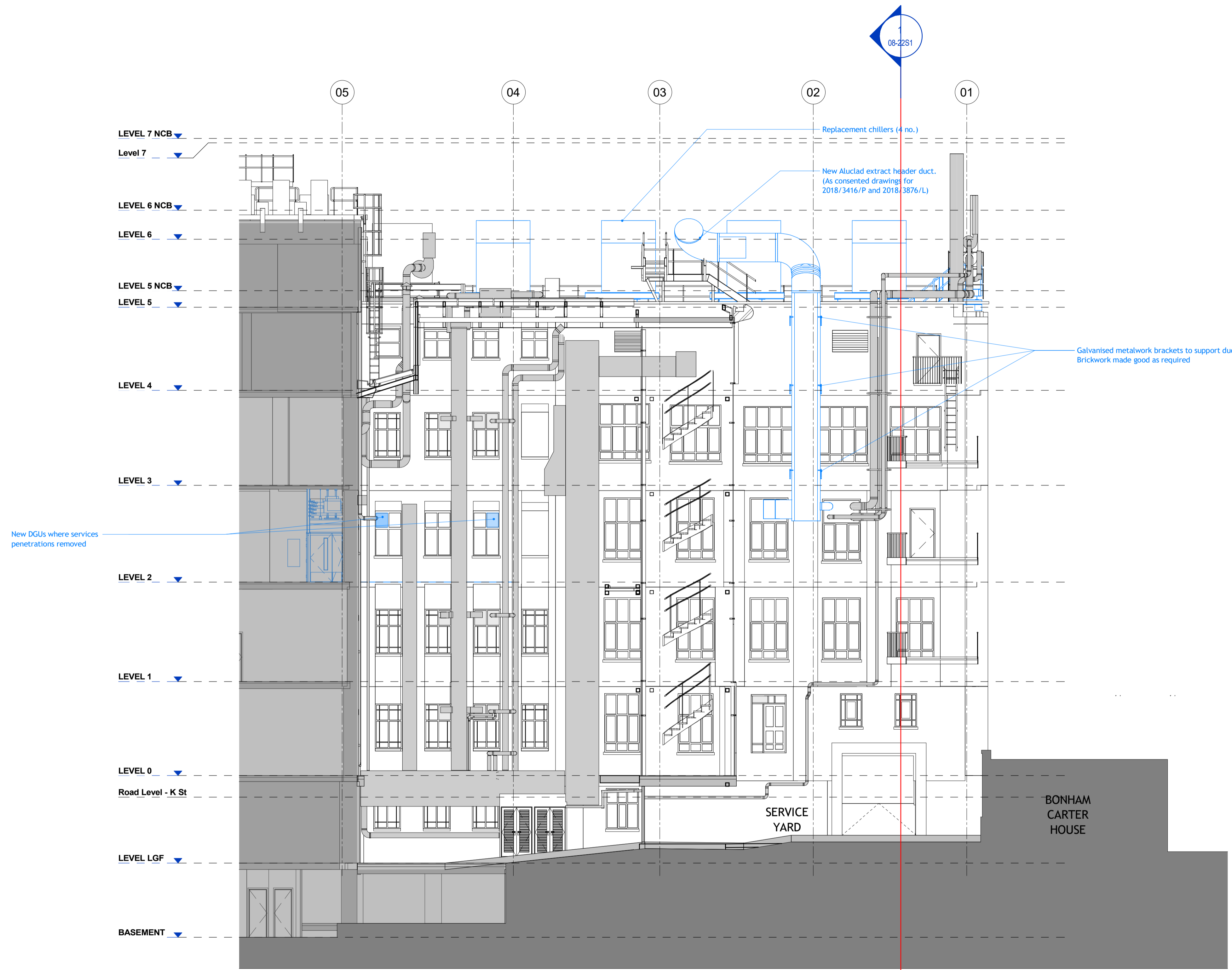


DO NOT SCALE
 THIS DRAWING IS © IAN RITCHIE ARCHITECTS LTD
 Dimensions to be verified on site.
 Figured dimensions to take preference to those scaled.
 All discrepancies to be clarified with the project Architect.
 Unless otherwise stated all levels to be AOD.
 This drawing is the property of Ian Ritchie Architects Ltd. and is issued on the condition it is not reproduced, retained or disclosed to any unauthorised person, either wholly or in part without written consent.



1 Planning Elevation - Proposed - NW Wing East Elevation
 1 : 100

Rev	Date	By	Ck	Ap	Description
3A	28.06.19	TR	CR	AS	Issued for Planning

Job Title
**LONDON SCHOOL OF
 HYGIENE AND TROPICAL
 MEDICINE (KEPPEL STREET)**

Drawing Title
**Planning Elevation -
 Proposed -NW Wing East
 Elevation**

© IAN RITCHIE ARCHITECTS LTD.
 110 Three Colt Street London E14 8AZ
 Tel: (44) 2073381100 Fax: (44)
 2073381199

Status PLANNING		
Scale As indicated@A1	Date 24.06.19	
Drawn TR	Checked CR	Approved AS
Job No. 739	Drawing No. 739-IRAL-02- 08-2104	Rev. 3A