


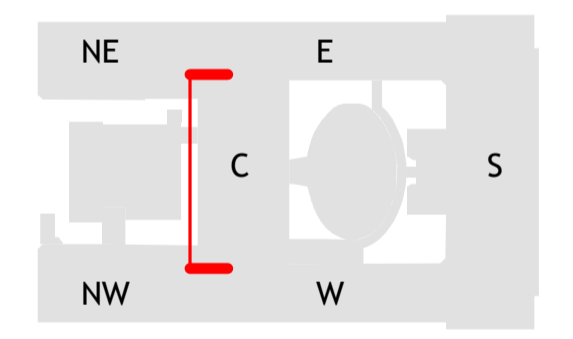
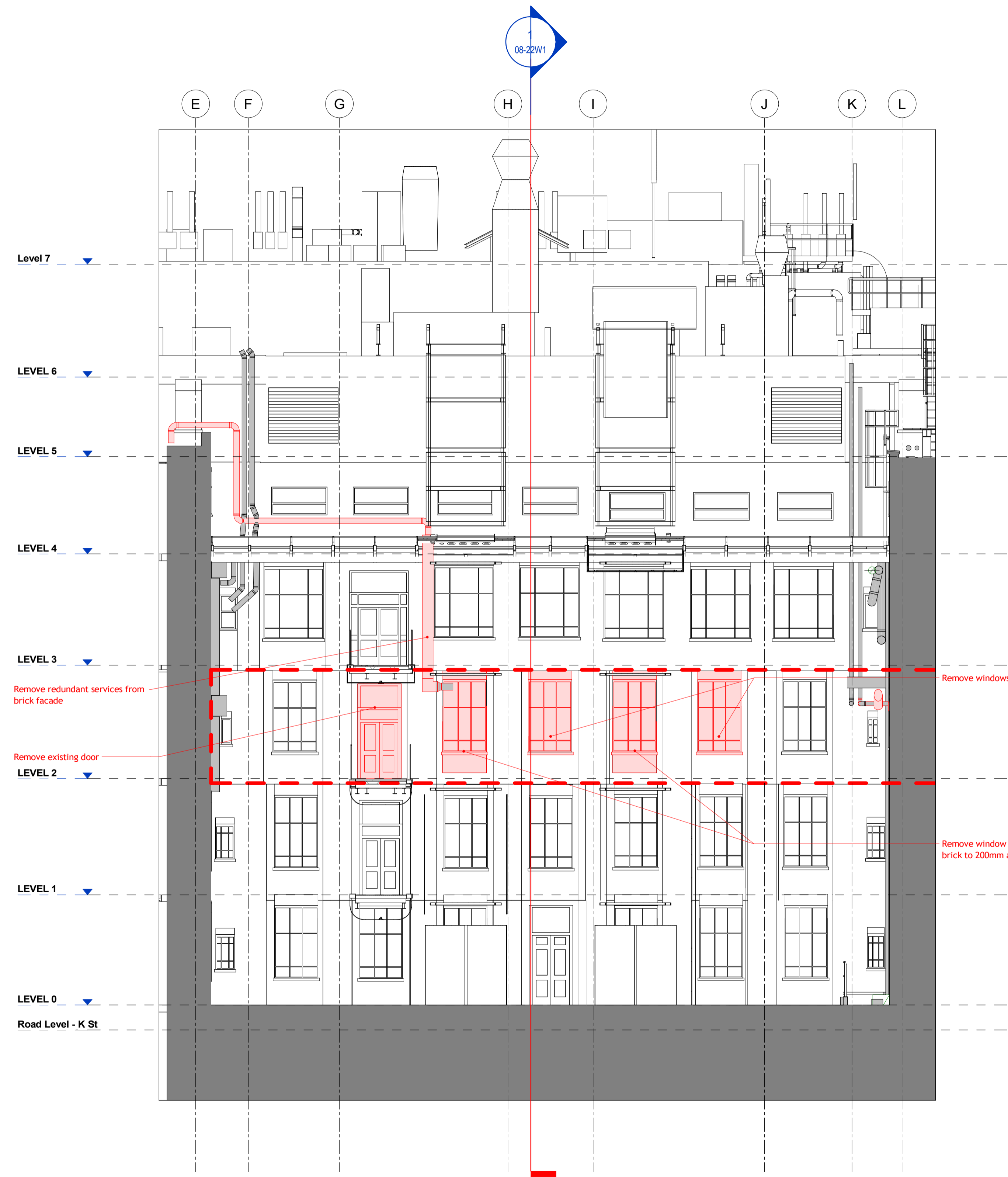


**DO NOT SCALE**  
 THIS DRAWING IS © IAN RITCHE ARCHITECTS LTD  
 Dimensions to be verified on site.  
 Figured dimensions to take preference to those scaled.  
 All discrepancies to be clarified with the project Architect.  
 Unless otherwise stated all levels to be AOD.  
 This drawing is the property of Ian Ritchie Architects Ltd. and is issued on the condition it is not reproduced, retained or disclosed to any unauthorised person, either wholly or in part without written consent.

**KEY:**  
 Elements to be dismantled and removed  
 Elements to be dismantled and removed  
 Surfaces to be dismantled and removed



Rev	Date	By	Ck	Ap	Description
3A	28.06.19	TR	CR	AS	Issued for Planning

Job Title  
**LONDON SCHOOL OF  
 HYGIENE AND TROPICAL  
 MEDICINE (KEPPEL STREET)**

Drawing Title  
**Planning Elevation -  
 Existing - Central Wing  
 North Elevation**

**IAN RITCHE ARCHITECTS** Ltd.  
 110 Three Colt Street London E14 8AZ  
 Tel: (44) 2073381100 Fax: (44) 2073381199

Status PLANNING		
Scale As indicated@A1	Date 24.06.19	
Drawn TR	Checked CR	Approved AS
Job No. 739	Drawing No. 739-IRAL-02-08-1905	Rev. 3A

1 Planning Elevation - Existing - Central Wing North Elevation  
 1 : 100