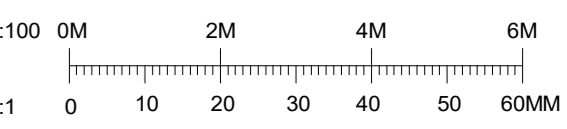
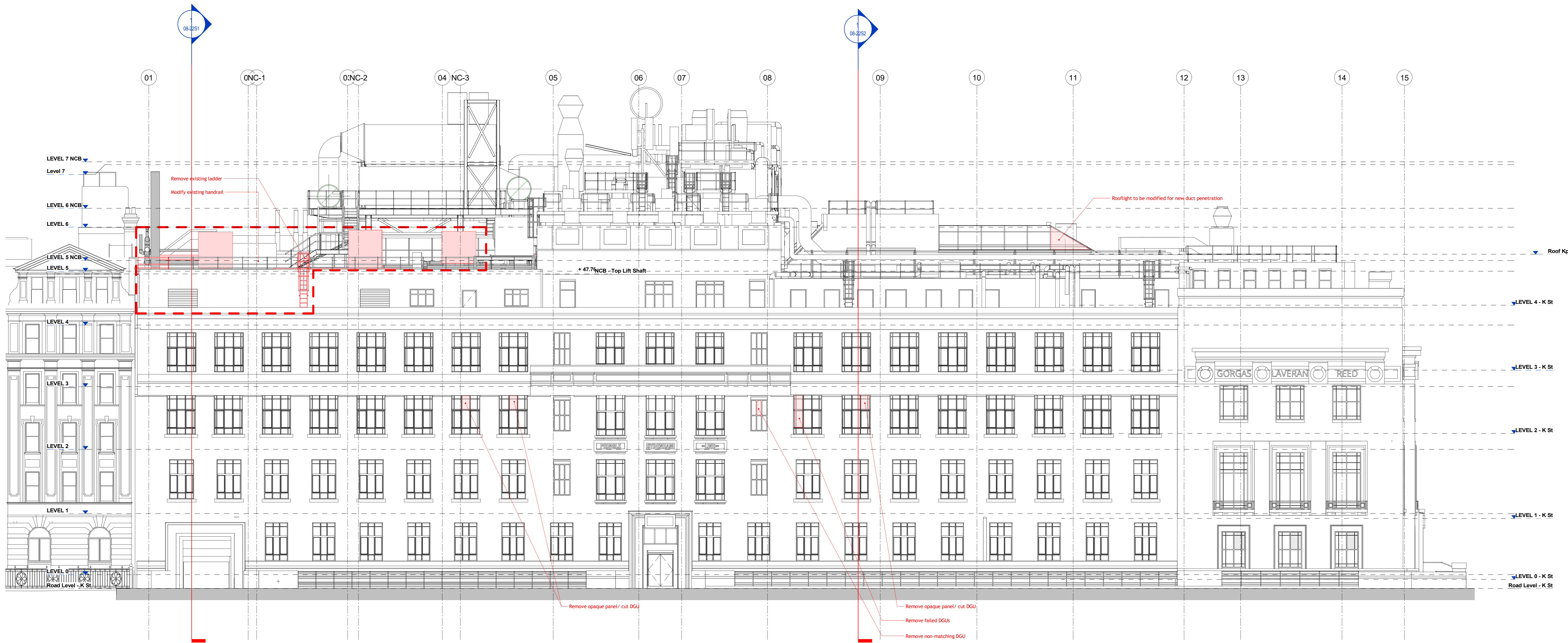


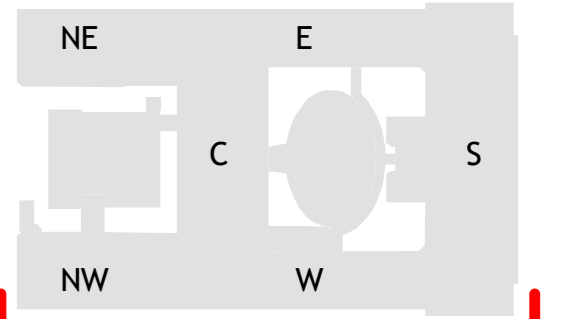
DO NOT SCALE
 THIS DRAWING IS THE PROPERTY OF IAN RITCHIE ARCHITECTS LTD.
 Dimensions to be verified on site.
 All discrepancies to be clarified with the project Architect.
 Unless otherwise stated all levels to be AOD.
 This drawing is the property of Ian Ritchie Architects Ltd. and is issued on the condition it is not reproduced, related or disclosed to any unauthorised person, either wholly or in part without written consent.



KEY:
■ Elements to be dismantled and removed
□ Elements to be dismantled and removed
□ Surfaces to be dismantled and removed



1 Planning Elevation- Existing - West - Gower Street Facade
 1 : 100



3A	28.06.19	TR	CR	AS	Issued for Planning
Rev	Date	By	Chk	App	Description
Job Title					
LONDON SCHOOL OF HYGIENE AND TROPICAL MEDICINE (KEPPEL STREET)					
Drawing Title					
Planning Elevation - Existing - Gower Street Elevation					
IAN RITCHIE ARCHITECTS LTD 110 THREE CUBS STREET LONDON E14 6AZ TEL: (+44) 2073381100 FAX: (+44) 2073381199					
Status: PLANNING					
Scale	1:100@A0	Date	04/06/19		
Drawn	TR	Checked	CR	Approved	AS
Job No.	739	Drawing No.	739-IRAL-02-08-1901	Rev.	3A