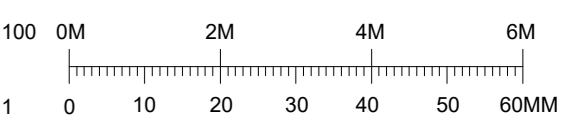
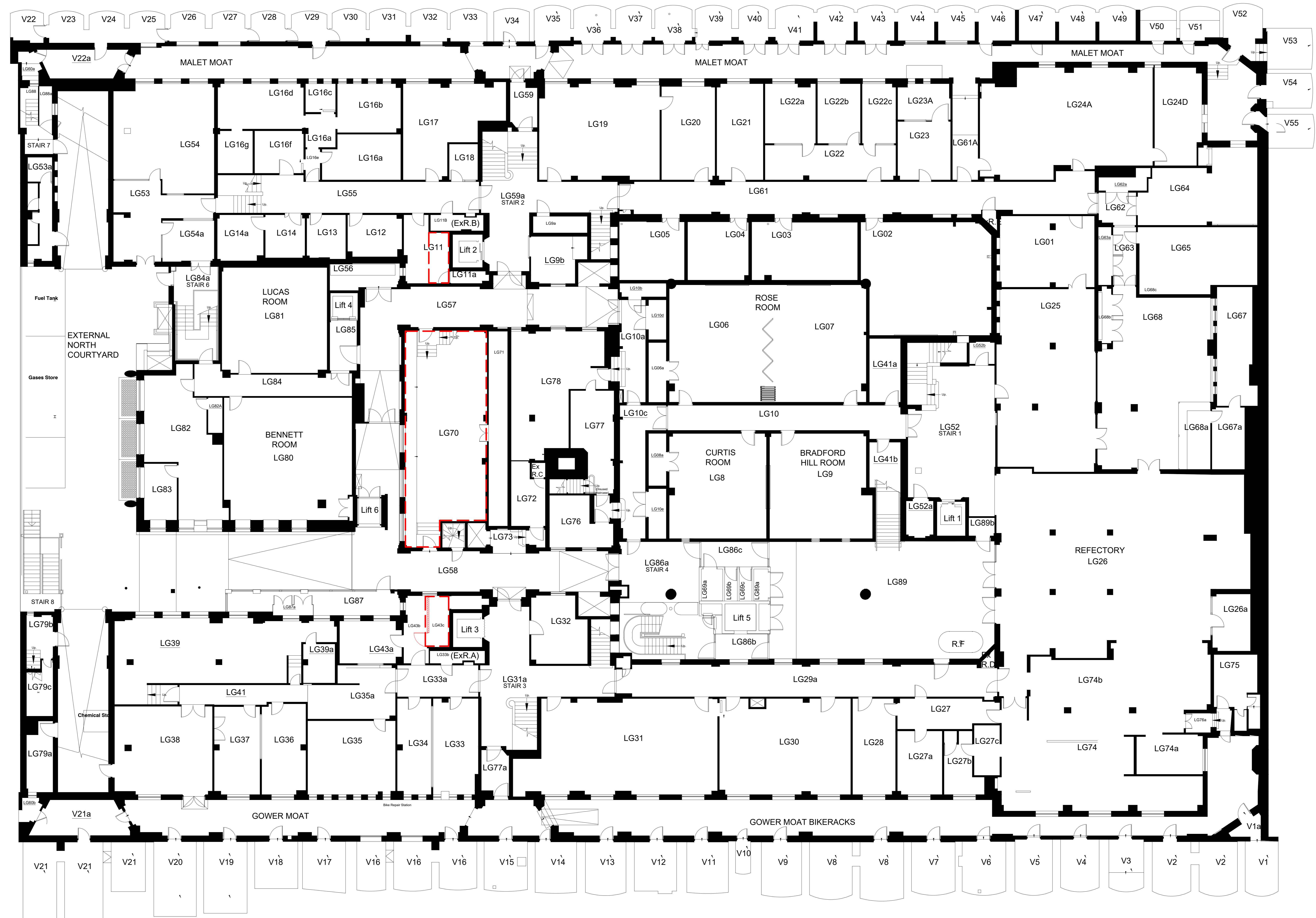


DO NOT SCALE  
 THIS DRAWING IS © IAN RITCHIE ARCHITECTS LTD  
 Dimensions to be verified on site.  
 Figure dimensions to take preference to those scaled.  
 All discrepancies to be clarified with the project Architect.  
 Unless otherwise stated all levels to be AOD.  
 This drawing is the property of Ian Ritchie Architects Ltd. and is  
 issued on the condition it is not reproduced, related or  
 disclosed to any unauthorised person, either wholly or in part without  
 written consent.



KEY:  
 — Internal Site Boundary  
 — Phase 2b / 2c Works



01 Existing Lower Ground Floor Level Plan  
 08-1807 Scale = 1:100

Rev	Date	By	CR	AS	Description
2A	28.06.19	TR	CR	AS	Issued for Planning
Job Title					
LONDON SCHOOL OF HYGIENE AND TROPICAL MEDICINE (KEPPEL STREET)					
Drawing Title					
GA Plan - Lower Ground Floor Level Existing					
IAN RITCHIE ARCHITECTS LTD 110 Three Cat Street London E14 8AZ Tel: (+44) 2073381100 Fax: (+44) 2073381199					
Status PLANNING					
Scale	1:100@A0	Date	28.06.2019		
Drawn	TR	Checked	CR	Approved	AS
Job No.	739	Drawing No.	08-1807	Rev.	3A