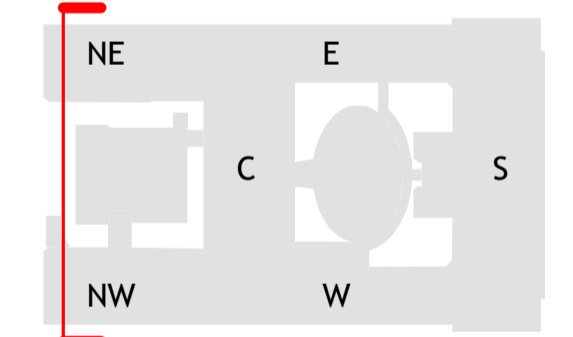
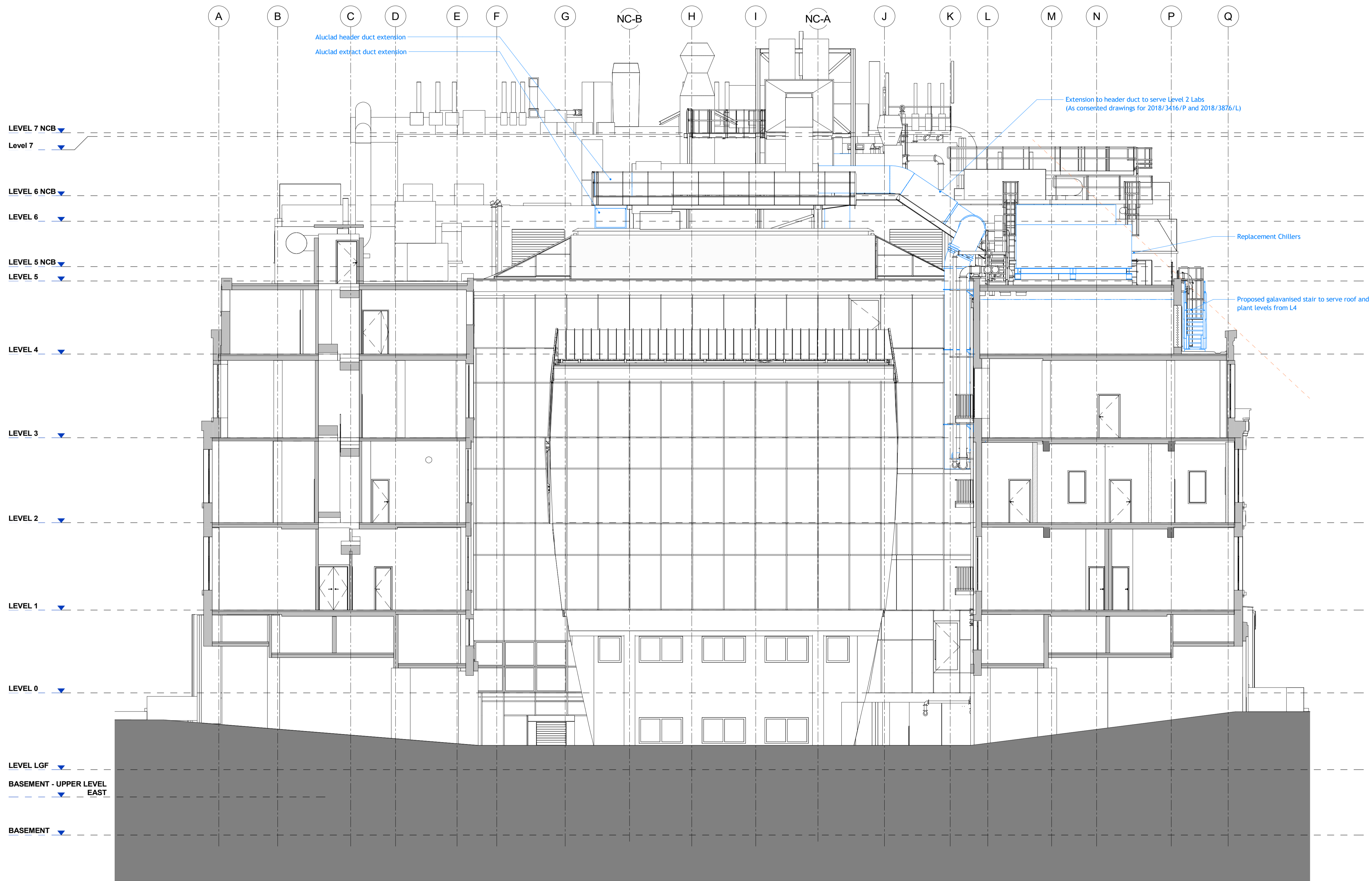


**DO NOT SCALE**  
 THIS DRAWING IS © IAN RITCHIE ARCHITECTS LTD  
 Dimensions to be verified on site.  
 Figured dimensions to take preference to those scaled.  
 All discrepancies to be clarified with the project Architect.  
 Unless otherwise stated all levels to be AOD.  
 This drawing is the property of Ian Ritchie Architects Ltd. and is issued on the condition it is not reproduced, retained or disclosed to any unauthorised person, either wholly or in part without written consent.



Rev	Date	By	Ck	Ap	Description
3A	28.06.19	TR	CR	AS	Issued for Planning

Job Title  
**LONDON SCHOOL OF  
 HYGIENE AND TROPICAL  
 MEDICINE (KEPPEL STREET)**

Drawing Title  
**Planning Section -  
 Proposed - NW Wing  
 Looking South**

**IAN RITCHIE ARCHITECTS** Ltd.  
 110 Three Colt Street London E14 8AZ  
 Tel: (44) 2073381100 Fax: (44)  
 2073381199

Status  
 PLANNING

Scale  
 As indicated@A1

Date  
 24.06.19

Drawn TR	Checked CR	Approved AS
-------------	---------------	----------------

Job No. 739	Drawing No. 739-IRAL-02-08-2251	Rev. 3A
----------------	------------------------------------	------------

1 Planning Section - Proposed - North Courtyard Looking South  
 1 : 100