

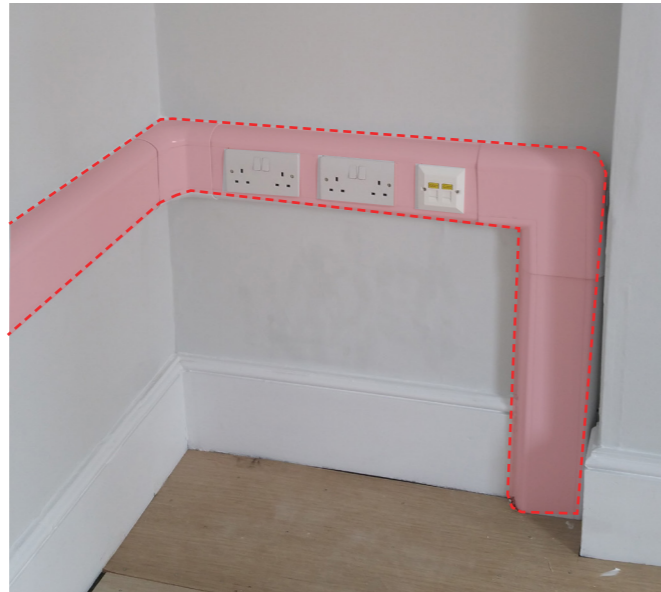
**TYPE A REMOVAL OF LOW LEVEL HORIZONTAL TRUNKING ELEMENT**  
**TYPE A1 REMOVAL OF LOW LEVEL VERTICAL TRUNKING ELEMENT**  
**TYPE B - REMOVAL OF HIGH LEVEL VERTICAL TRUNKING ELEMENT**  
 -SOCKETS+ DATA POINT TO BE RECESSED AND SET @100MM CENTER LINE FROM SKIRTING LEVEL

See the method statements at the back of this document for details of making good the lath & plaster and decorative plaster in materials to match existing following the chasing in of the cabling during these works.

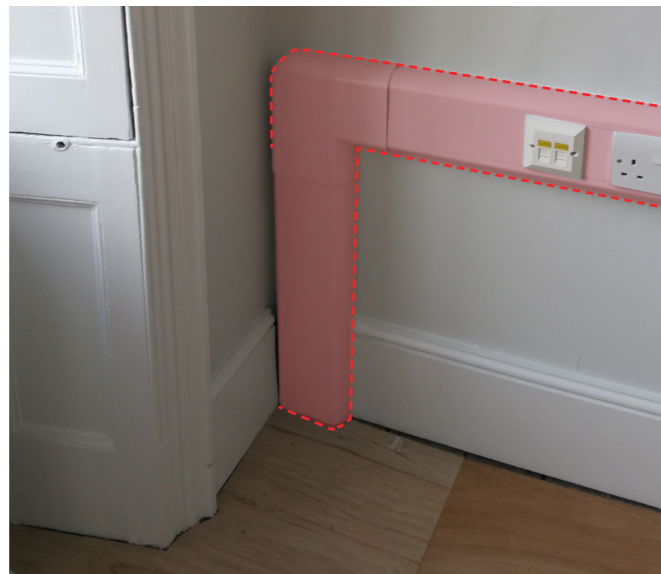
11MS/2/001 - AS BUILT CONDITION



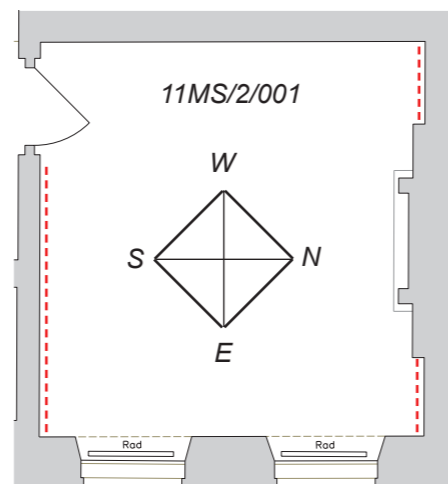
North Elevation - Type B



North Elevation - Type A, A1



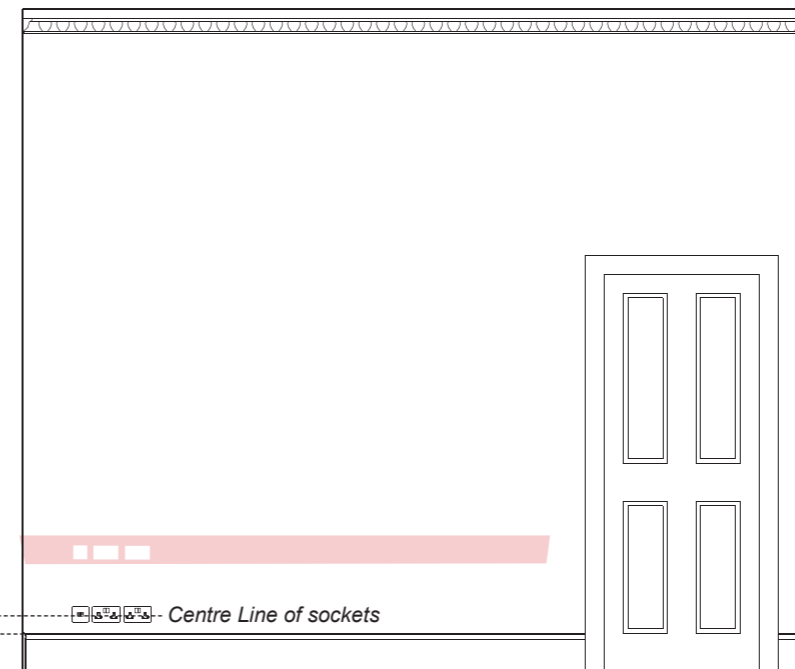
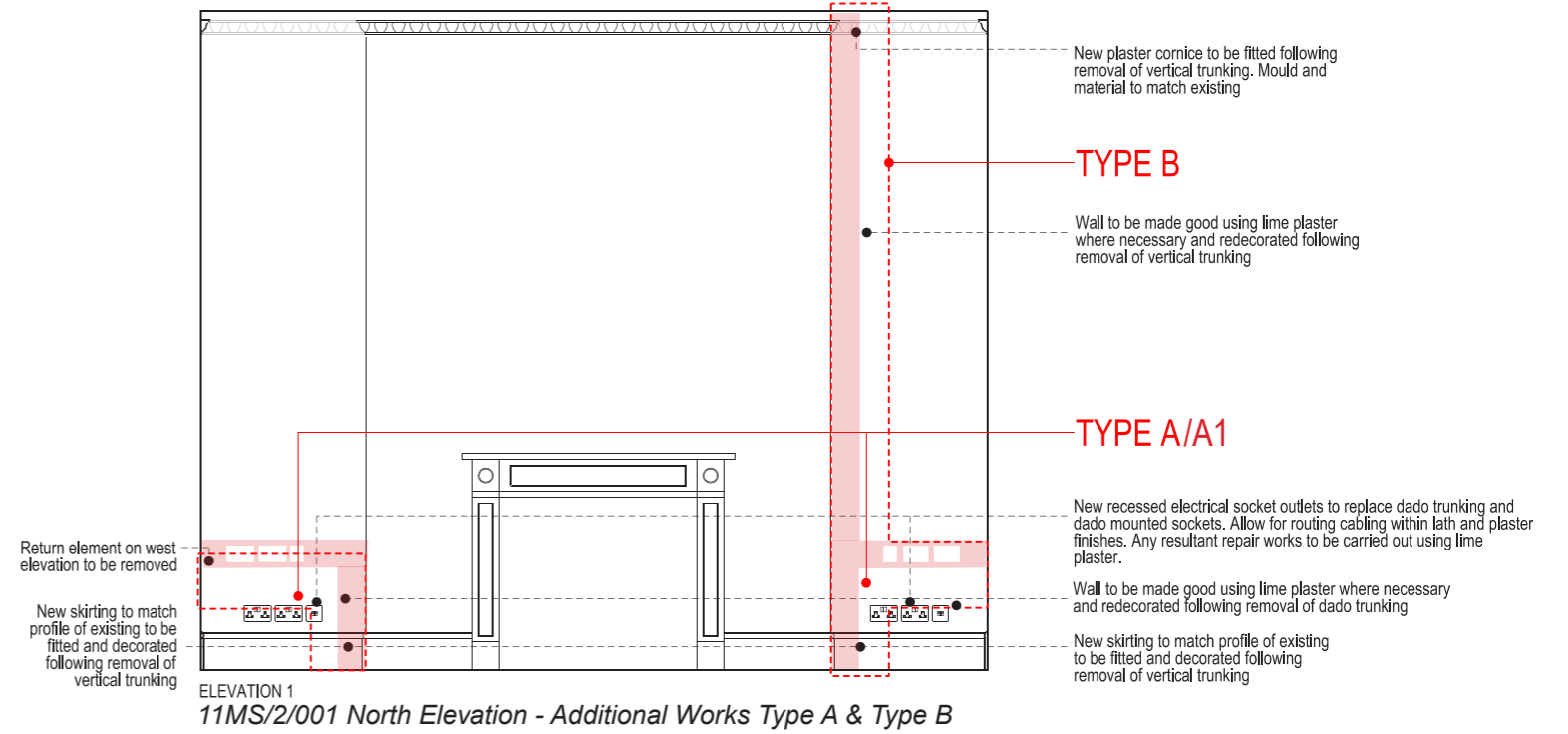
South Elevation - Type A, A1



Trunking Location plan

--- Trunking Removed

11MS/2/001 - AS BUILT CONDITION



**TYPE A1**

Dado trunking carefully removed and timber skirting reinstated and decorated. Wiring chased into walls, walls made good in materials to match existing - see method statements.

<b>BDP.</b>	
16 Brewhouse Yard Clerkenwell London EC1V 4LJ United Kingdom T +44 (0)20 7812 8000 F +44 (0)20 7812 8399 www.bdp.com	
PROJECT TITLE British Museum Perimeter Properties Refurbishment	
PROJECT NUMBER P2002323	SCALE Varies@A3
PROJECT TITLE Additional works Type A, A1, B Removal of horizontal /vertical trunking	DATE 14/06/2019
PROJECT NO. (70)AD001	REVISION -