

Staircase to be retained, restored and made good subject to structural condition survey

All historic fabric, plinth and cornices to be retained made good and restored

Sash window opening to be retained. New double glazed sash to be installed and made good

Replace existing door within retained opening

1 Hour fire rated partition to enclose lift shaft

New double glazed window with etched glass

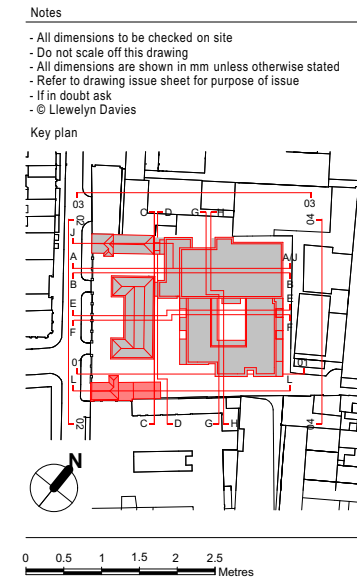
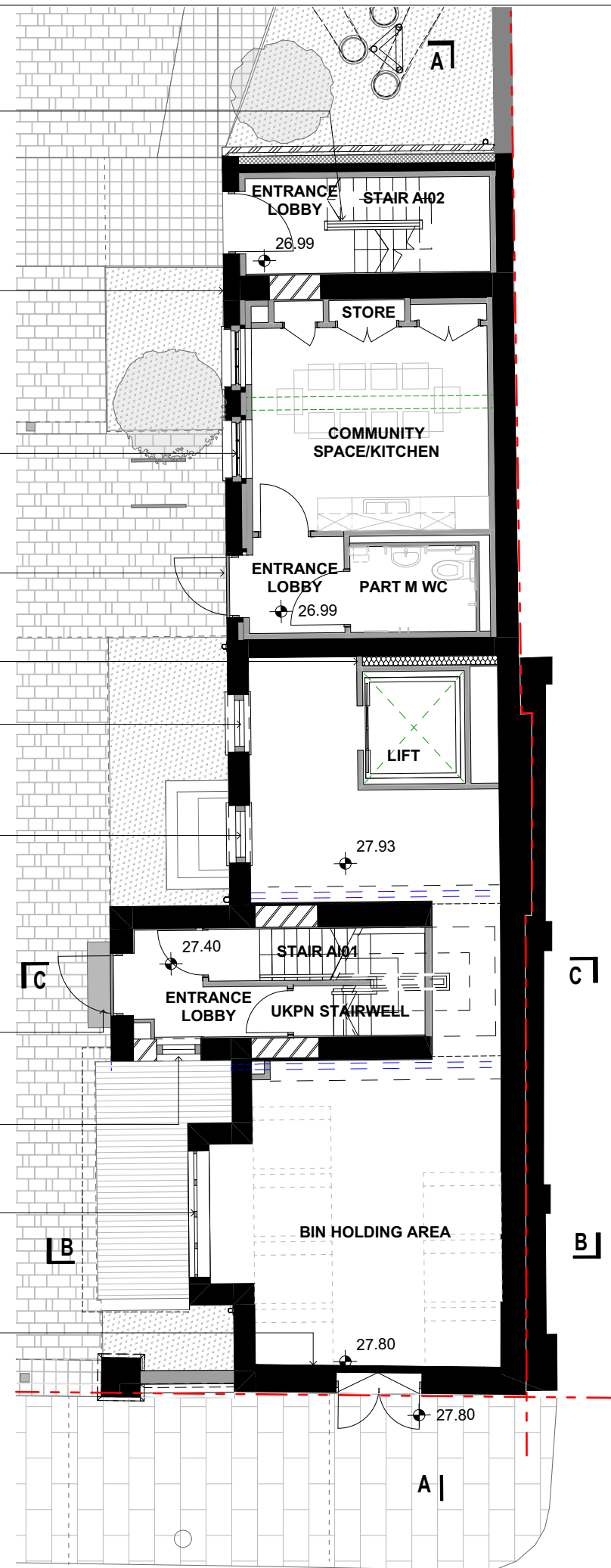
New double glazed window with etched glass

All door openings within historic fabric retained and new doors installed to match and replace existing

Infill to match existing

New double glazing with film to bay window

New Aco channel drain



KEY	
	EXISTING BUILDING RETAINED
	NEW INFILL TO MATCH EXISTING
	NEW BUILD

Rev	Description	Date	By	Chk
C	Planning Amendments	15.02.19	FM	PB
B	Planning Amendments	17.08.18	YC	PB
A	Revised Scheme	12.03.18	AM	PB

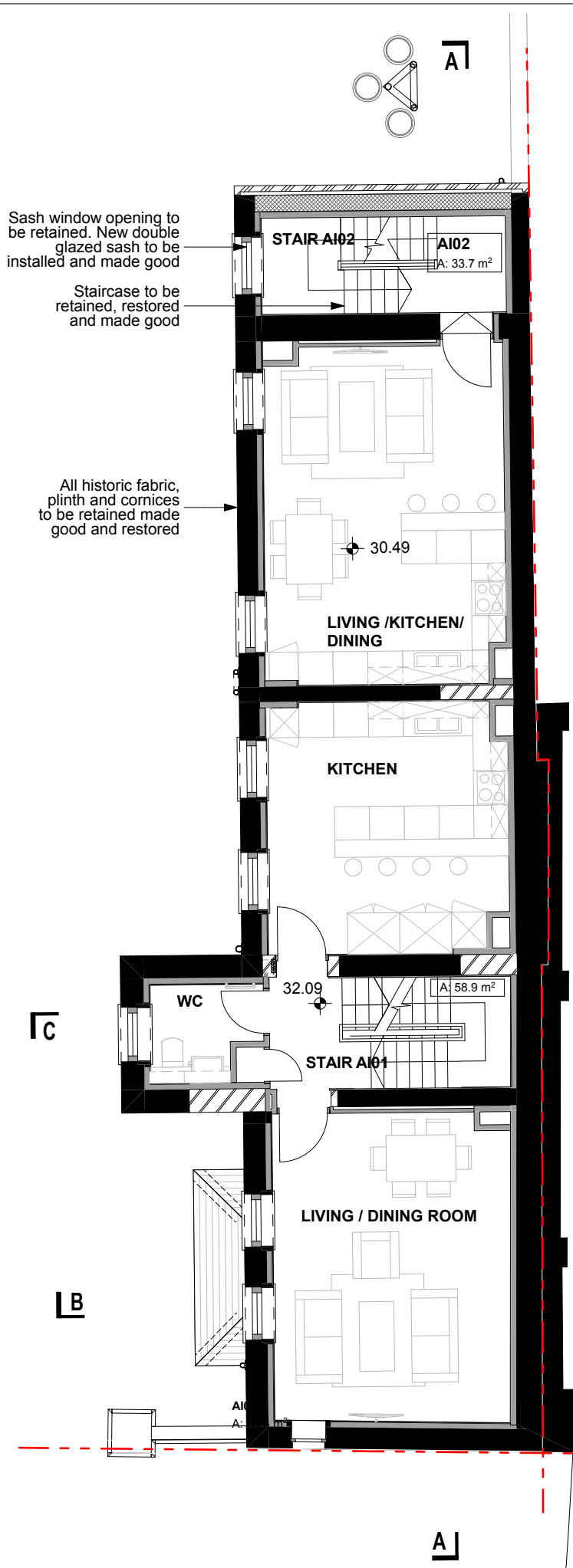
Structural Consultant	AECOM	020 7061 7000
Services Consultant	Arup	020 7636 1531
Cost Consultant	Equals Consulting	020 7580 3360
Planning Consultant	TEMPLE	020 7394 3700

Project Title  
Middlesex Hospital Annex  
Client  
University College London  
Hospitals Charity (UCLHC)

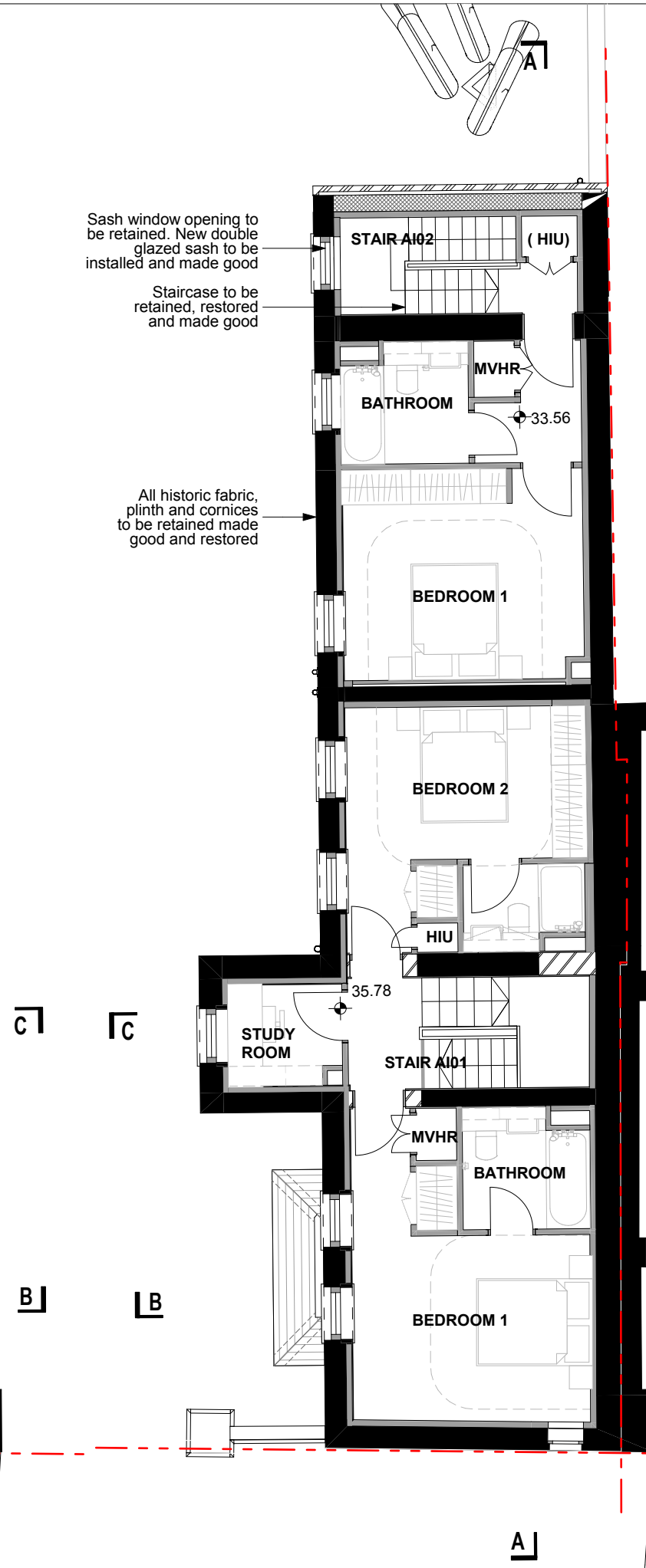
Drawing Title  
South House GA Level B1 & 00

Project Number	Drawing Number	Revision
LD15 078.00	P_GA_SH_B1-00	C
Scale @ A3	1:100	Date
04/04/2017	Architects	

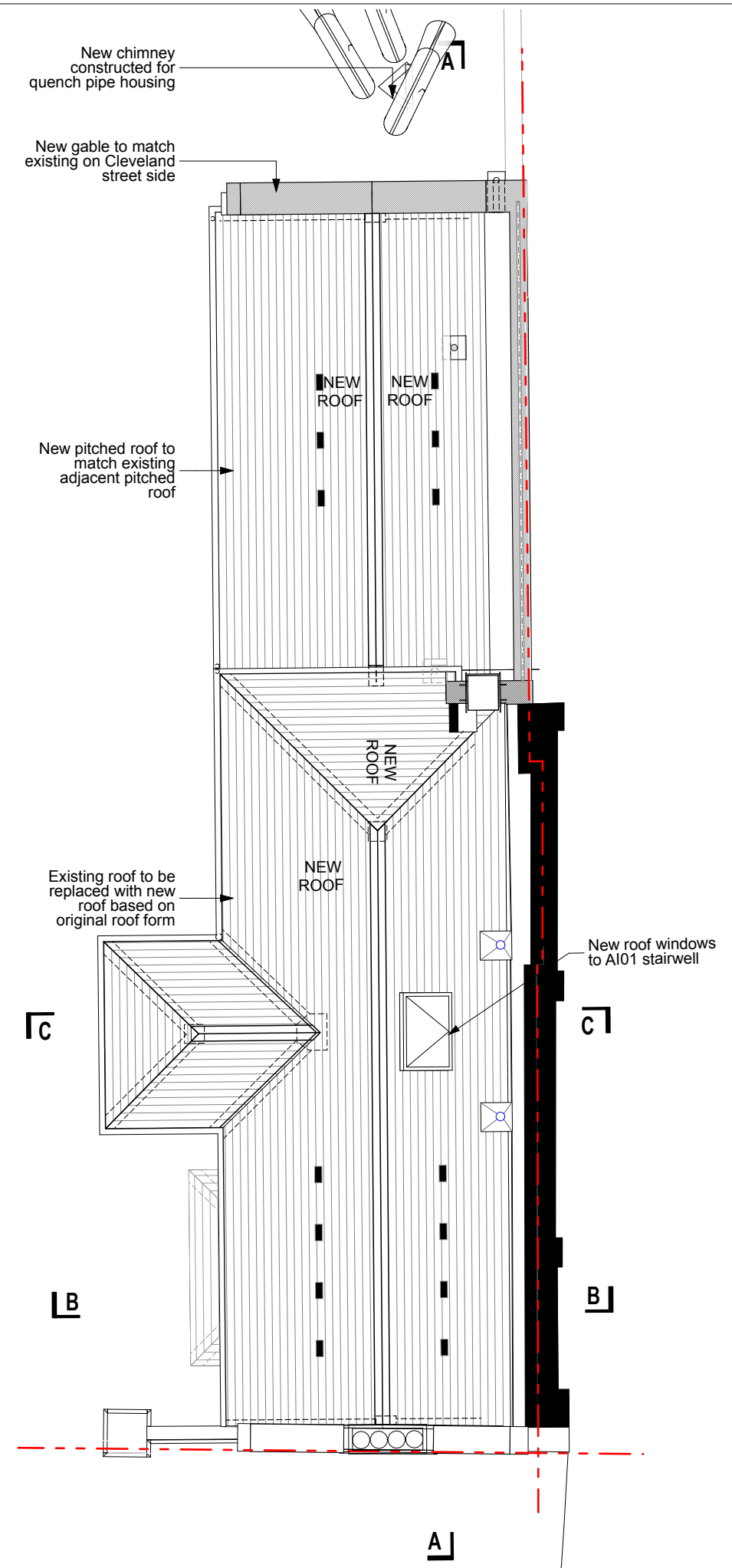
**LLEWELYN DAVIES**  
3rd floor | 3-5 Rathbone Place | London | W1T 1HJ  
T +44(0)20 7907 7900 | E london@ldavies.com  
www.ldavies.com



FIRST FLOOR



SECOND FLOOR



ROOF LEVEL

Notes

- All dimensions to be checked on site
- Do not scale off this drawing
- All dimensions are shown in mm unless otherwise stated
- Refer to drawing issue sheet for purpose of issue
- If in doubt ask
- © Llewelyn Davies

Key plan

0 0.5 1 1.5 2 2.5 Metres

KEY

- EXISTING BUILDING RETAINED
- NEW INFILL TO MATCH EXISTING
- NEW BUILD

Rev	Description	Date	By	Chk
D	Planning Amendments	31.05.19	FM	PB
C	Planning Amendments	15.02.19	FM	PB
B	Planning Amendments	17.08.18	YC	PB
A	Revised Scheme	12.03.18	AM	PB

Structural Consultant  
**AECOM** 020 7061 7000

Services Consultant  
**Arup** 020 7636 1531

Cost Consultant  
**Equals Consulting** 020 7580 3360

Planning Consultant  
**TEMPLE** 020 7394 3700

Project Title  
**Middlesex Hospital Annex**

Client  
**University College London Hospitals Charity (UCLHC)**

Drawing Title  
**South House GA Level 01, 02 & Roof**

Project Number	Drawing Number	Revision
LD15 078.00	P_GA_SH_01-02-03	D

Scale @ A3  
1:100

Date  
04/04/2017

Architects  
**LLEWELYN DAVIES**

3rd floor | 3-5 Rathbone Place | London | W1T 1HJ  
T +44(0)20 7907 7900 | E london@ldavies.com  
www.ldavies.com

All dimensions to be checked on site  
Do not scale off this drawing  
All dimensions are shown in mm unless otherwise stated  
Refer to drawing issue sheet for purpose of issue  
If in doubt ask  
© Llewelyn Davies

A diagram of a T-shaped cross-section. The horizontal top flange is labeled with a dimension line and the text 'E01'. The vertical stem is labeled with a dimension line and the text 'E03'.

[illegible]

Drawing Title

---

South House Proposed Elevation 01

Architects

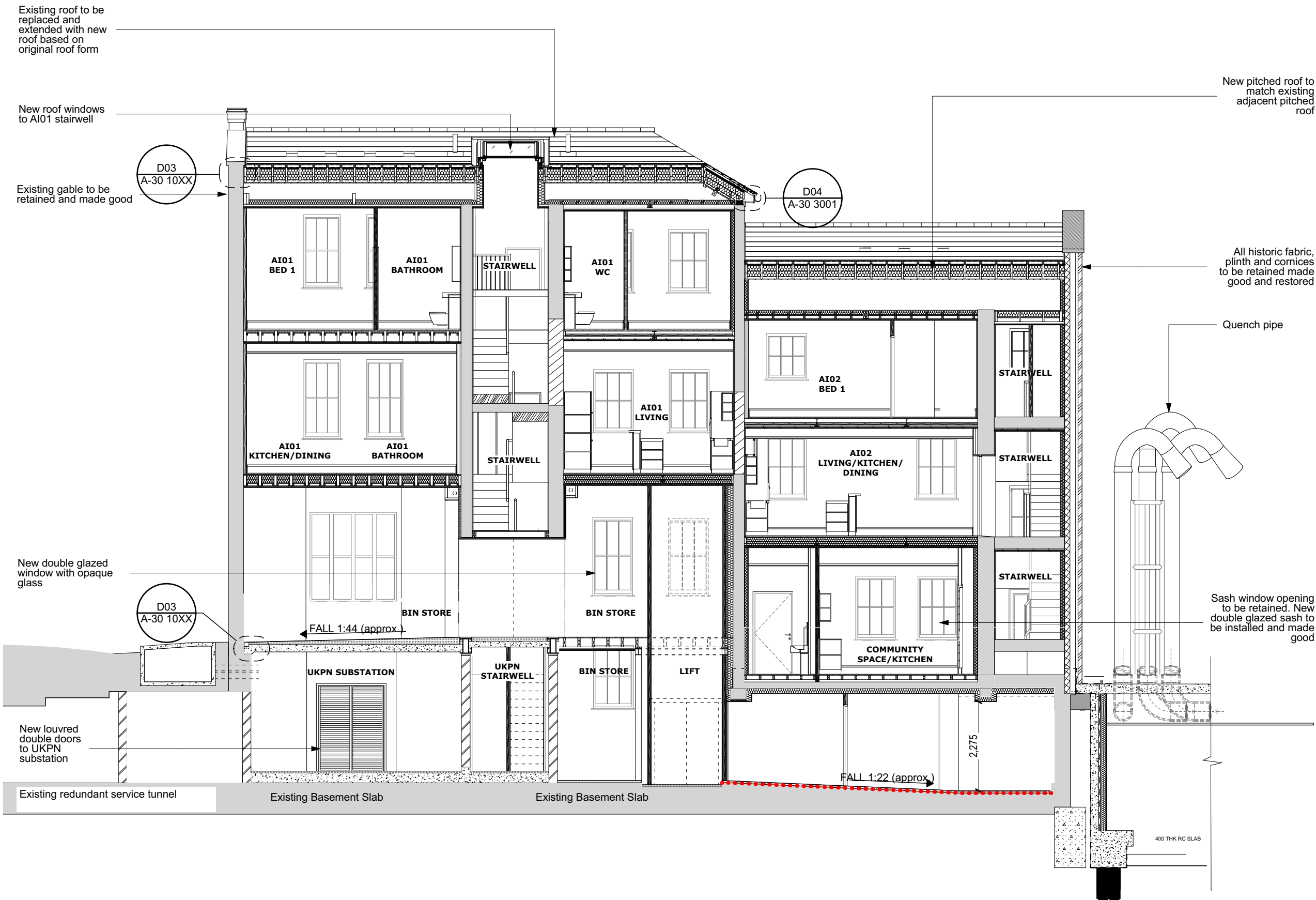
3rd floor | 3-5 Rathbone Place | London | W1T 1HJ  
T +44(0)20 7907 7900 | E [london@ldavies.com](mailto:london@ldavies.com)  
[www.ldavies.com](http://www.ldavies.com)

FFL VARIES TO 1:60 FALL

1:100







S01

1:100

Notes

- All dimensions to be checked on site
- Do not scale off this drawing
- All dimensions are shown in mm unless otherwise stated
- Refer to drawing issue sheet for purpose of issue
- If in doubt ask
- © Llewelyn Davies

Key plan

0 0.5 1 1.5 2 2.5 Metres

KEY PLAN

C	Planning Amendments	15.02.19	FM	PB
B	Planning Amendments	17.08.18	YC	PB
A	Revised Scheme	12.03.18	AM	PB
Rev	Description	Date	By	Chk

Structural Consultant  
**AECOM** 020 7061 7000

Services Consultant  
**Arup** 020 7636 1531

Cost Consultant  
**Equals Consulting** 020 7580 3360

Planning Consultant  
**TEMPLE** 020 7394 3700

Project Title  
**Middlesex Hospital Annex**

Client  
**University College London  
Hospitals Charity (UCLHC)**

Drawing Title  
**South House Proposed Section 01**

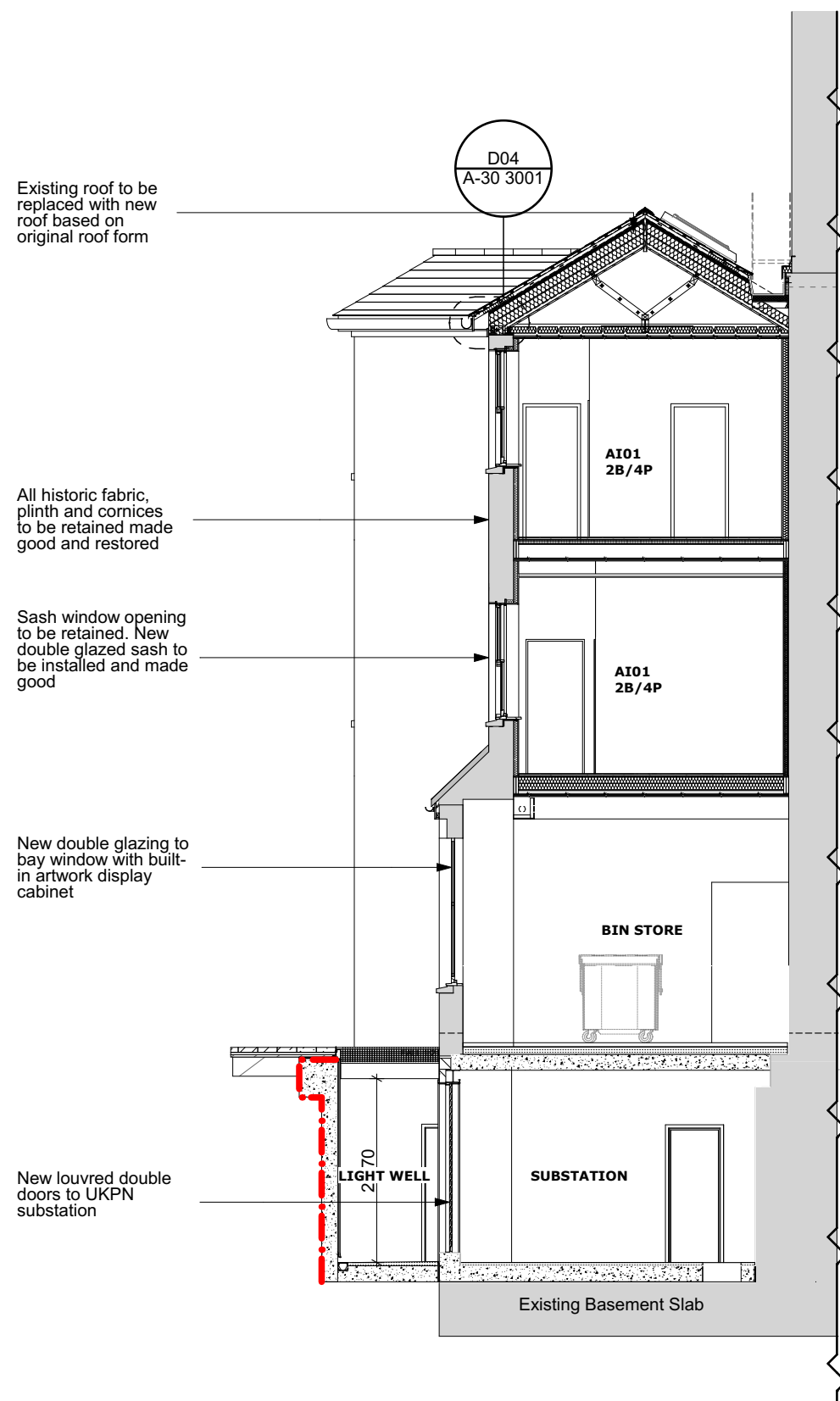
Project Number	Drawing Number	Revision
LD15 078.00	S_SH_01	C

Scale @ A3  
1:100

Date  
04/04/2017

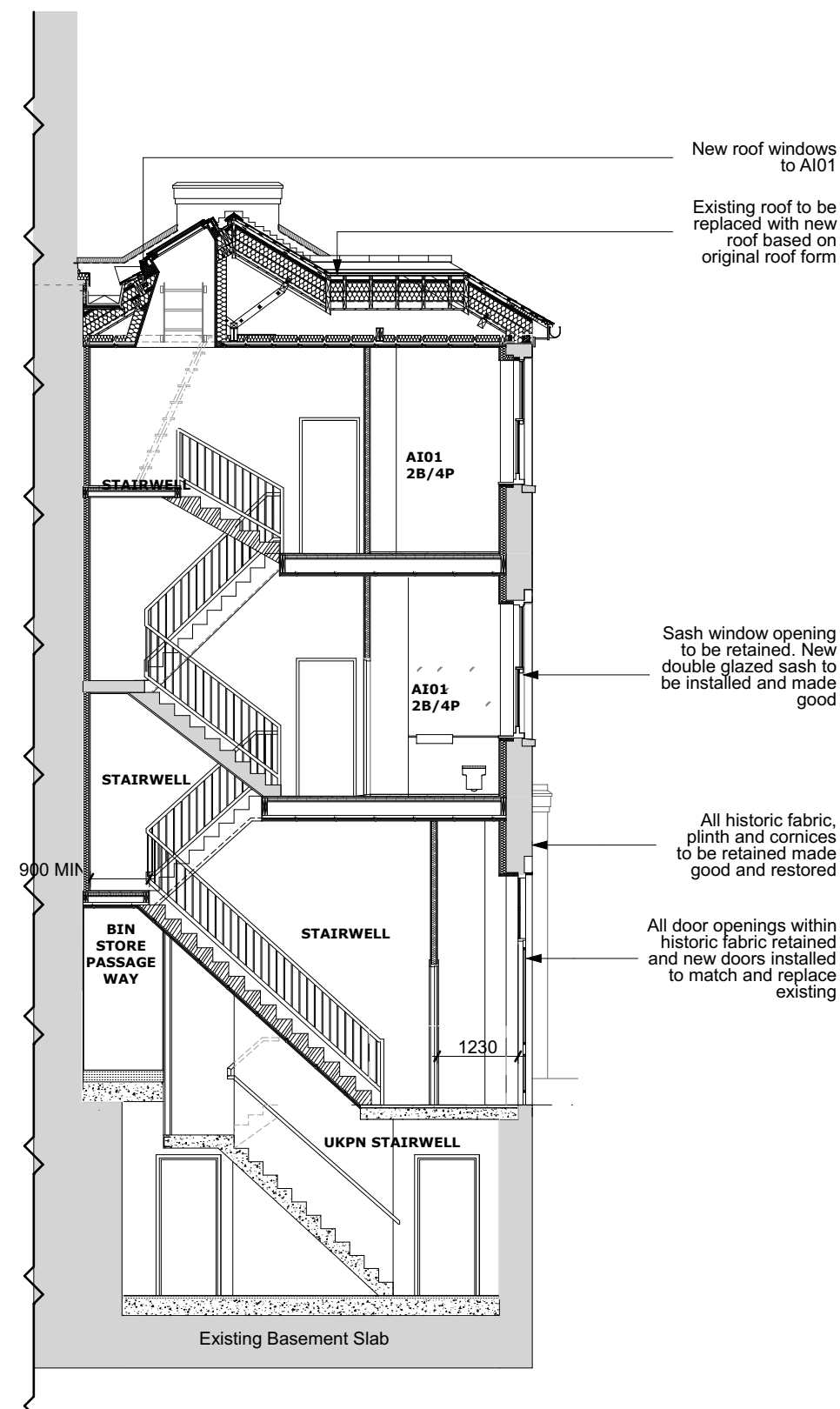
Architects  
**LLEWELYN DAVIES**

3rd floor | 3-5 Rathbone Place | London | W1T 1HJ  
T +44(0)20 7907 7900 | E london@ldavies.com  
www.ldavies.com



S02

1:100



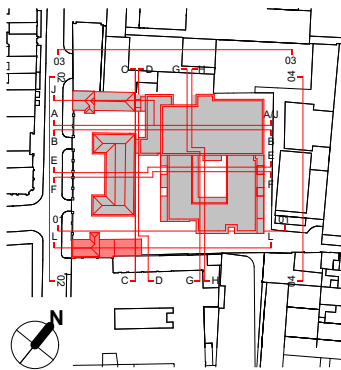
S03

1:100

## Notes

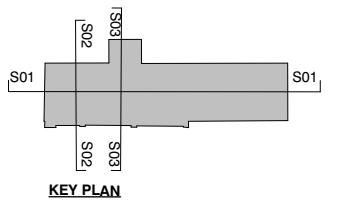
- All dimensions to be checked on site
- Do not scale off this drawing
- All dimensions are shown in mm unless otherwise stated
- Refer to drawing issue sheet for purpose of issue
- If in doubt ask
- © Llewelyn Davies

### Key plan



0      0.5      1      1.5      2      2.5

Metres



C	Planning Amendments	15.02.19	FM	PB
B	Planning Amendments	17.08.18	YC	PB
A	Revised Scheme	12.03.18	AM	PB
Rev	Description	Date	By	Chk

Structural Consultant	
AECOM	020 7061 7000

Services Consultant  
Arup 020 7636 1531

Cost Consultant  
Equals Consulting 020 7580 3360

Planning Consultant  
TEMPLE 020 7394 3700

Project Title  
Middlesex Hospital Annex

Client  
University College London  
Hospitals Charity (UCLHC)

Drawing Title

---

South House Proposed Section 02 &  
03

Project Number	Drawing Number	Revision
LD15 078.00		C

Scale @ A3  
1:100

Date 04/04/2017

Architects

LLEWELYN  
DAVIES

3rd floor | 3-5 Rathbone Place | London | W1T 1HJ  
T +44(0)20 7907 7900 | E london@ldavies.com  
www.ldavies.com