

As per 06.06.19 NMA Issue

- Unit 1 MMA
- New dormer type DT04
- New east extension serving Unit 1
- New single glazed leaded window
- Stone padstone
- New single glazed leaded timber door with fixed side light

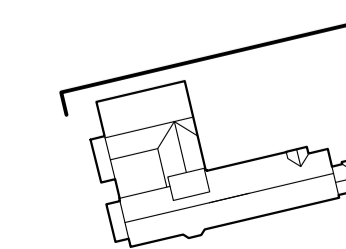
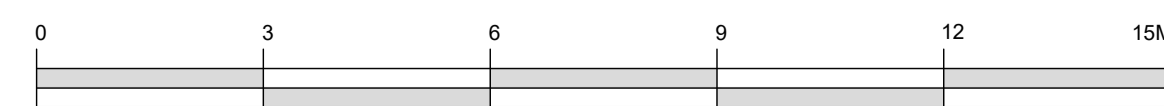


PROPOSED NORTH ELEVATION



APPROVED NORTH ELEVATION

Revisions					Revisions						
Rev	Date	By	Description	Checked	Approved	Rev	Date	By	Description	Checked	Approved
P2	19.06.19	RB	For MMA Release	ABF	RH						
P3	20.06.19	RB	For MMA Release	ABF	RH						



Client Sign Off	Architect/Originator: Tate Harmer	Unit 1182, Stamford Works, 3 Gilt Street, London N16 8JH	Do not scale. All dimensions to be checked on site. This drawing is copyright.
	Client: Platinum Land	8 Quagga House, 1 Duke of York Square, Kings Road, London, SW3 4LY	Date of Origin: 28.11.17
	Project: Belsize Park Firestation		Drawn By: TS
	Drawing Title: Unit 1 MMA North Elevations		Scale: 1:100
	Drawing Number: BFS THA PR SK 079 P3	Revision:	Drawing Status: Planning