

2nd floor emergency lighting test switching arrangement

1:1: 2nd floor landing

# Second Floor

m

**DO NOT SCALE**

This drawing must not be scaled.

The Principal Contractor is to verify all dimensions, levels and datums prior to commencement of work. Any discrepancies are to be reported immediately to the Supervising Officer.

Variations and modifications to the work shown on these drawings are not to be carried out without the written permission of the Project Officer.

This drawing is the property of The National Trust. The information shown is to be treated as confidential and must not be copied, reproduced or disclosed to any third person without the written permission of The National Trust's written permission.

Maps are reproduced by permission of Ordnance Survey.  
 © Crown copyright and database right 2011.  
 All rights reserved.  
 Ordnance Survey licence number AL 100023974

Revision	By	Date	Details

**Notes**

- Emergency light fitting and ref to schedule
- Emergency light test switch

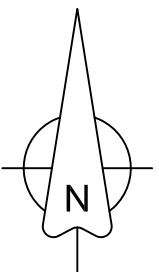
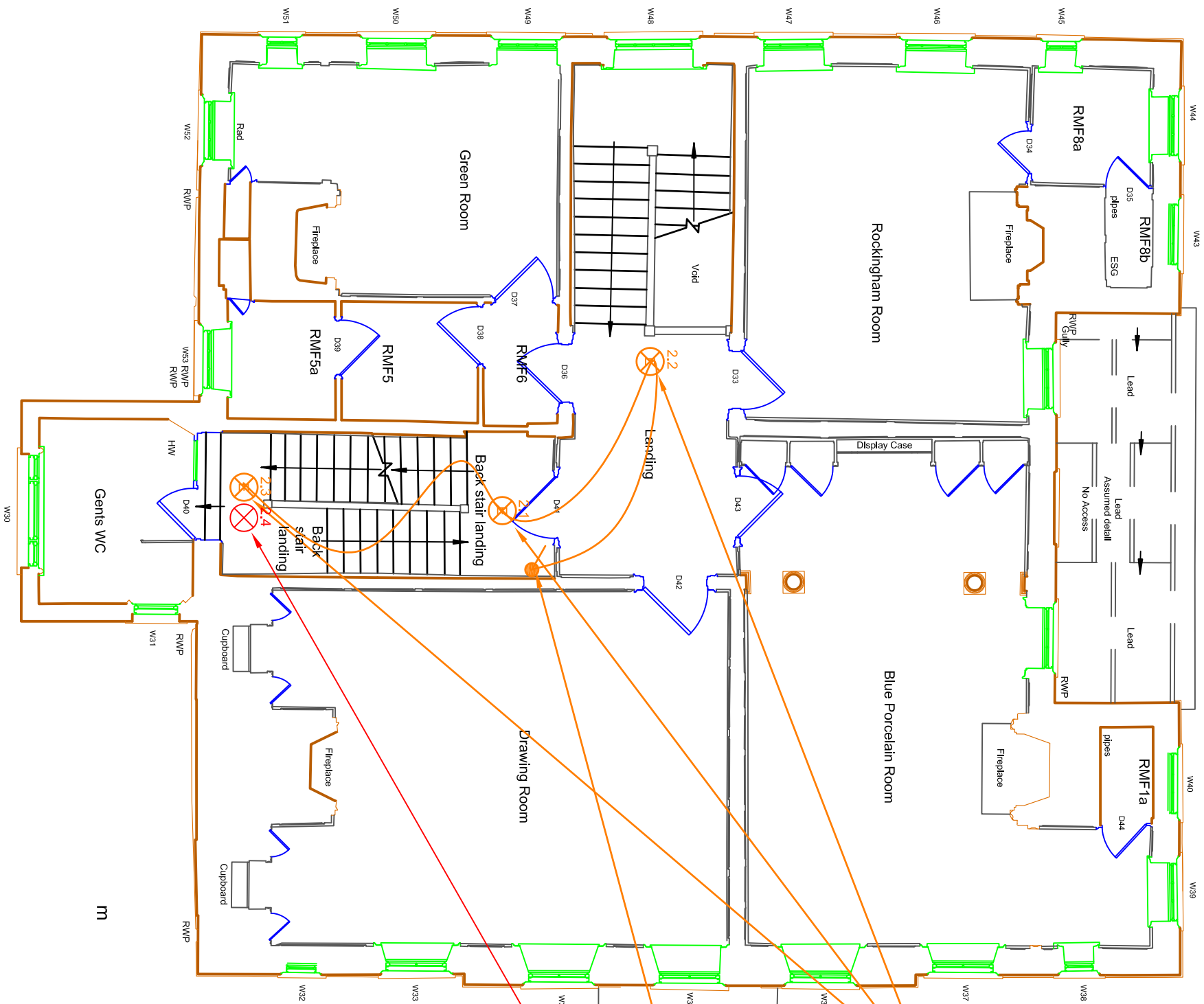


London and South East  
 20 Grosvenor Gardens  
 London  
 SW1W 0DH

Edwards Property  
 Fenton House, Hampstead Grove,  
 Hampstead, London. NW3 6SP

Drawing Title  
**2nd floor - Emergency lighting proposal layout**

Drawn By	Date
TM	June 2019
Scale	Property Reference
1:1	NTS
Drawing No	Revision
FH - SF - Lighting01	



2.1: 1st floor back stair landing  
 2.2: 1st floor landing  
 2.3 Ground/ First floor half landing

1st floor emergency lighting test switching arrangement

2.4: Ground/ first floor half landing pendant light fitting

# First Floor

**DO NOT SCALE**

This drawing must not be scaled.

The Principal Contractor is to verify all dimensions, levels and datums prior to commencement of work. Any discrepancies are to be reported immediately to the Supervising Officer.

Variations and modifications to the work shown on these drawings are not to be carried out without the written permission of the Project Officer.

This drawing is the property of The National Trust. The information shown is to be treated as confidential and must not be copied, reproduced or disclosed to any third person without the National Trust's written permission.

Maps are reproduced by permission of Ordnance Survey.  
 © Crown copyright and database right 2011.  
 All rights reserved.  
 Ordnance Survey licence number AL 100023974

Revision	By	Date	Details

- Notes
- ⊗ Emergency light fitting and ref to schedule
  - 🔦 Emergency light test switch
  - ⊗ Proposed pendant light fitting

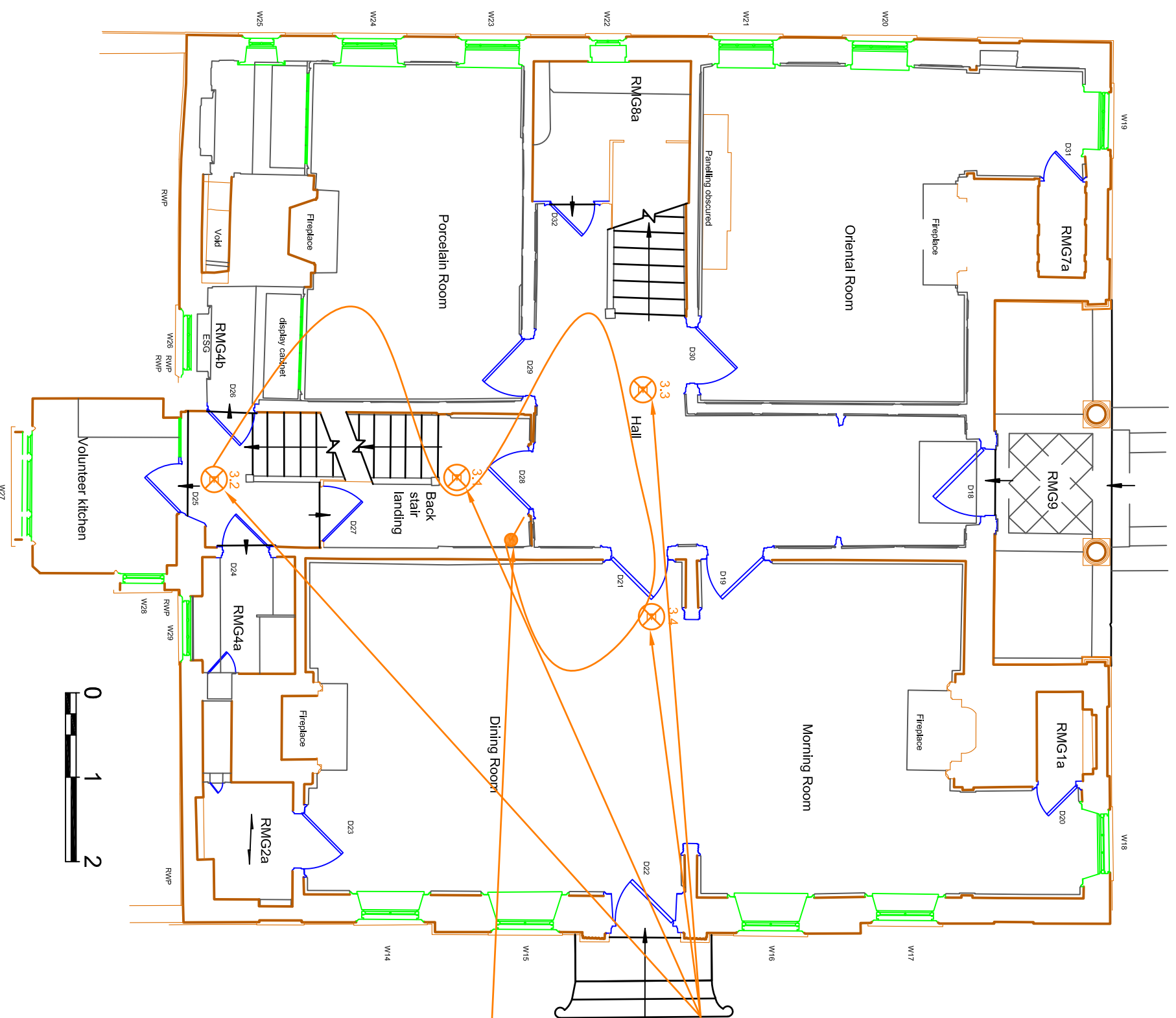


London and South East  
 20 Grosvenor Gardens  
 London  
 SW1W 0DH

Editor / Property  
 Fenton House, Hampstead Grove,  
 Hampstead, London. NW3 6SP

Drawing Title  
 1st floor - Emergency lighting  
 proposal layout

Drawn By TM	Date June 2019
Scale @ A1 NTS	Property Reference
Drawing No FH - FF - Lighting02	Revision



- 3.1: Ground floor back stair landing
  - 3.2: Ground floor back stair landing
  - 3.3: Ground floor hall
  - 3.4: Ground floor dining room
- Ground floor emergency lighting test switching arrangement

# Ground Floor

**DO NOT SCALE**

This drawing must not be scaled.

The Principal Contractor is to verify all dimensions, levels and datums prior to commencement of work. Any discrepancies are to be reported immediately to the Supervising Officer.

Variations and modifications to the work shown on these drawings are not to be carried out without the written permission of the Project Officer.

This drawing is the property of The National Trust. The information shown is to be treated as confidential and must not be copied, reproduced or disclosed to any third person without the written permission of the National Trust's written permission.

Maps are reproduced by permission of Ordnance Survey.  
 © Crown copyright and database right 2011.  
 All rights reserved.  
 Ordnance Survey licence number AL 100023974

Revision	By	Date	Details

- Notes
- ⊗ Emergency light fitting and ref to schedule
  - ⦿ Emergency light test switch

**National Trust**  
 London and South East  
 20 Grosvenor Gardens  
 London  
 SW1W 0DH

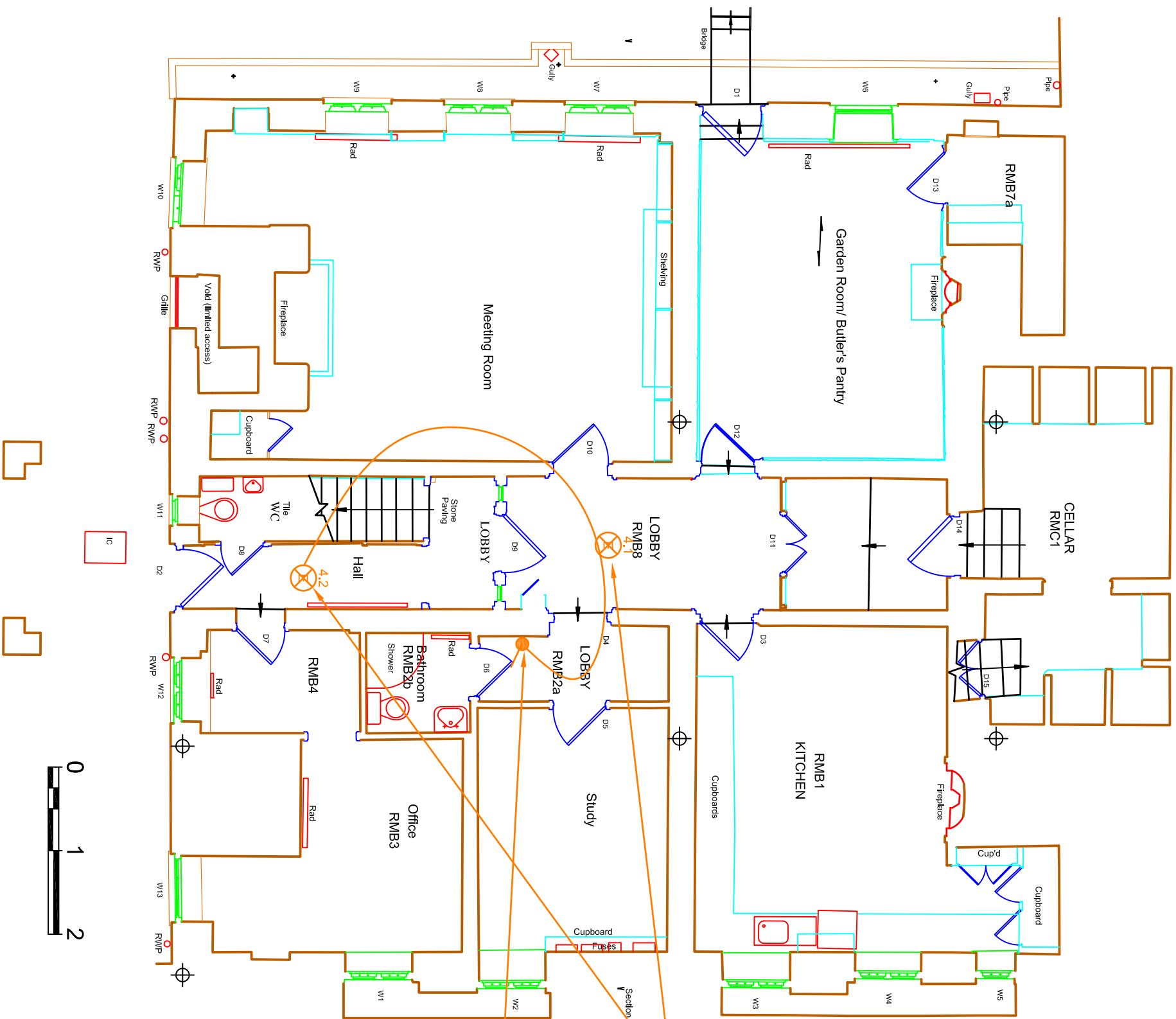
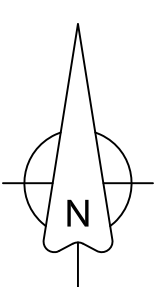
Editer / Property  
 Fenton House, Hampstead Grove,  
 Hampstead, London. NW3 6SP

Drawing Title  
 Ground floor - Emergency lighting  
 proposal layout

Drawn By  
 TM  
 Scale @ A1  
 NTS

Date  
 June 2019  
 Property Reference

Drawing No	Revision
FH - GF - Lighting03	



Lower ground floor emergency lighting test switching arrangement

4.1: Lower ground floor lobby  
4.2: Lower ground floor hall

# Lower Ground Floor

**DO NOT SCALE**

This drawing must not be scaled.

The Principal Contractor is to verify all dimensions, levels and datums prior to commencement of work. Any discrepancies are to be reported immediately to the Supervising Officer.

Variations and modifications to the work shown on these drawings are not to be carried out without the written permission of the Project Officer.

This drawing is the property of The National Trust. The information shown is to be treated as confidential and must not be copied, reproduced or disclosed to any third person without the written permission of The National Trust's written permission.

Maps are reproduced by permission of Ordnance Survey.  
© Crown copyright and database right 2011.  
All rights reserved.  
Ordnance Survey licence number AL 100023974

Revision	By	Date	Details

- Notes
- Emergency light fitting and ref to schedule
  - Emergency light test switch



London and South East  
20 Grosvenor Gardens  
London  
SW1W 0DH

Estator / Property  
Fenton House, Hampstead Grove,  
Hampstead, London. NW3 6SP

Drawing Title  
Lower ground floor - Emergency lighting proposal layout

Drawn By	Date
TM	June 2019
Scale	Property Reference
1:1	NTS
Drawing No	Revision
FH - LG - Lighting04	