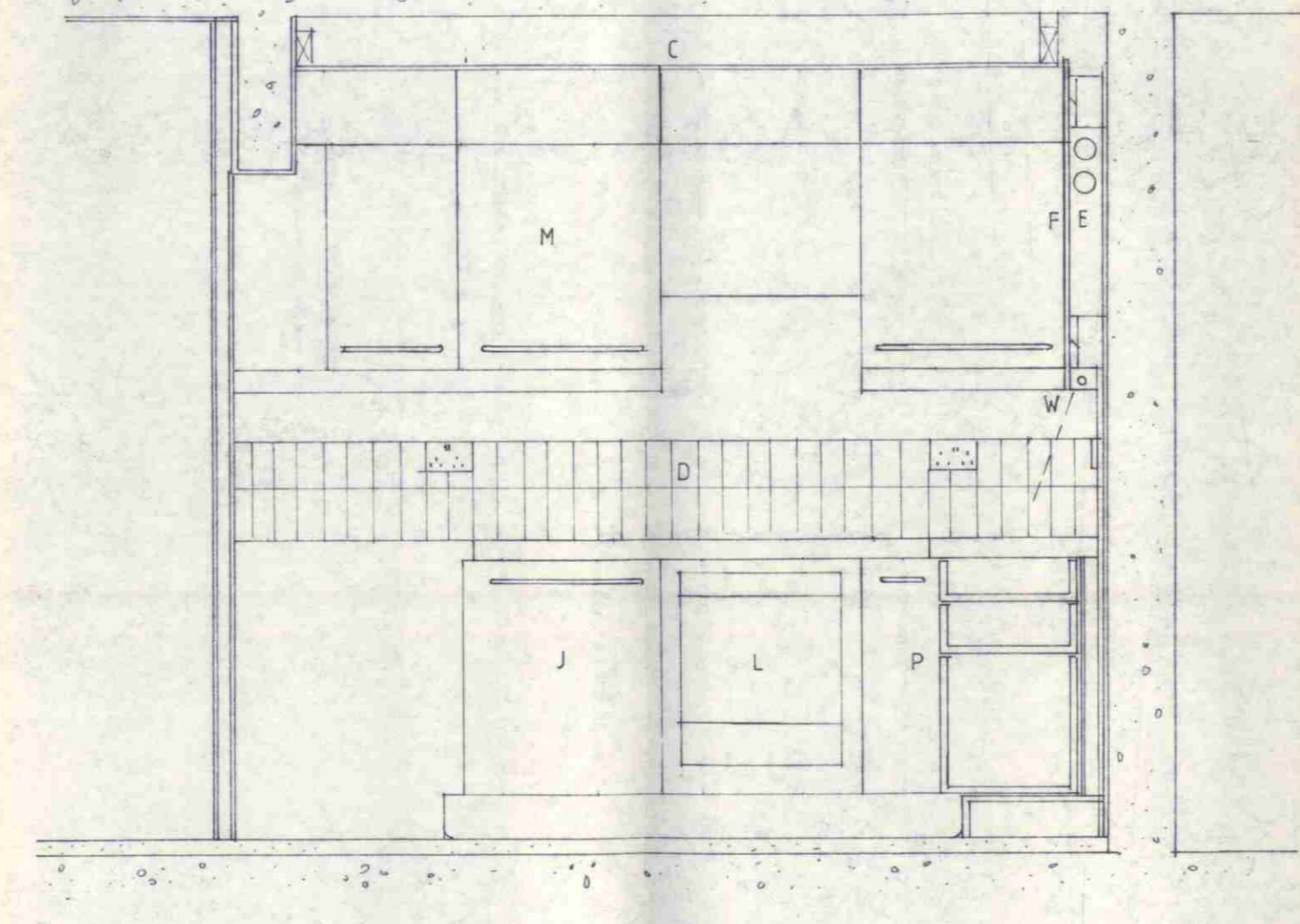
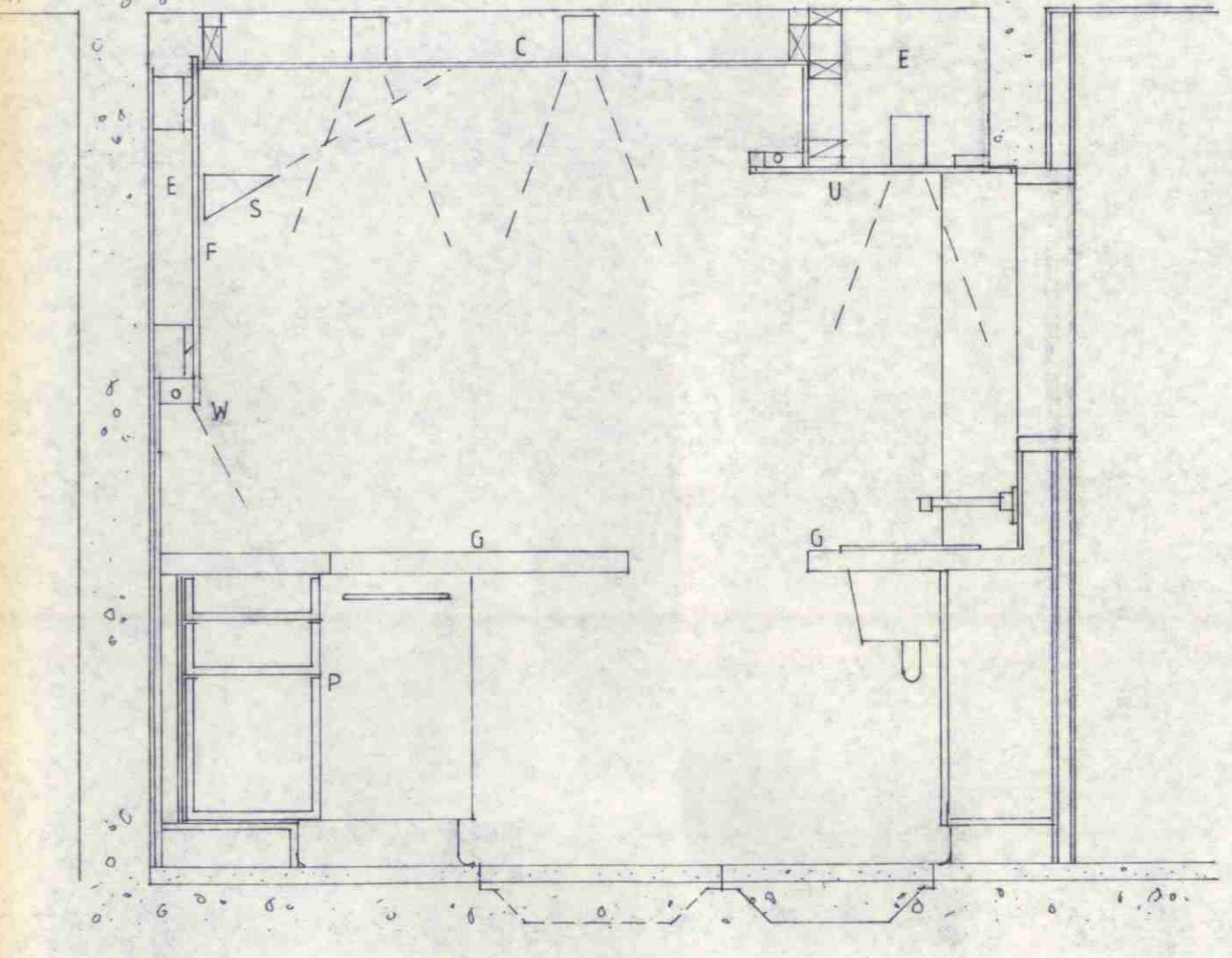


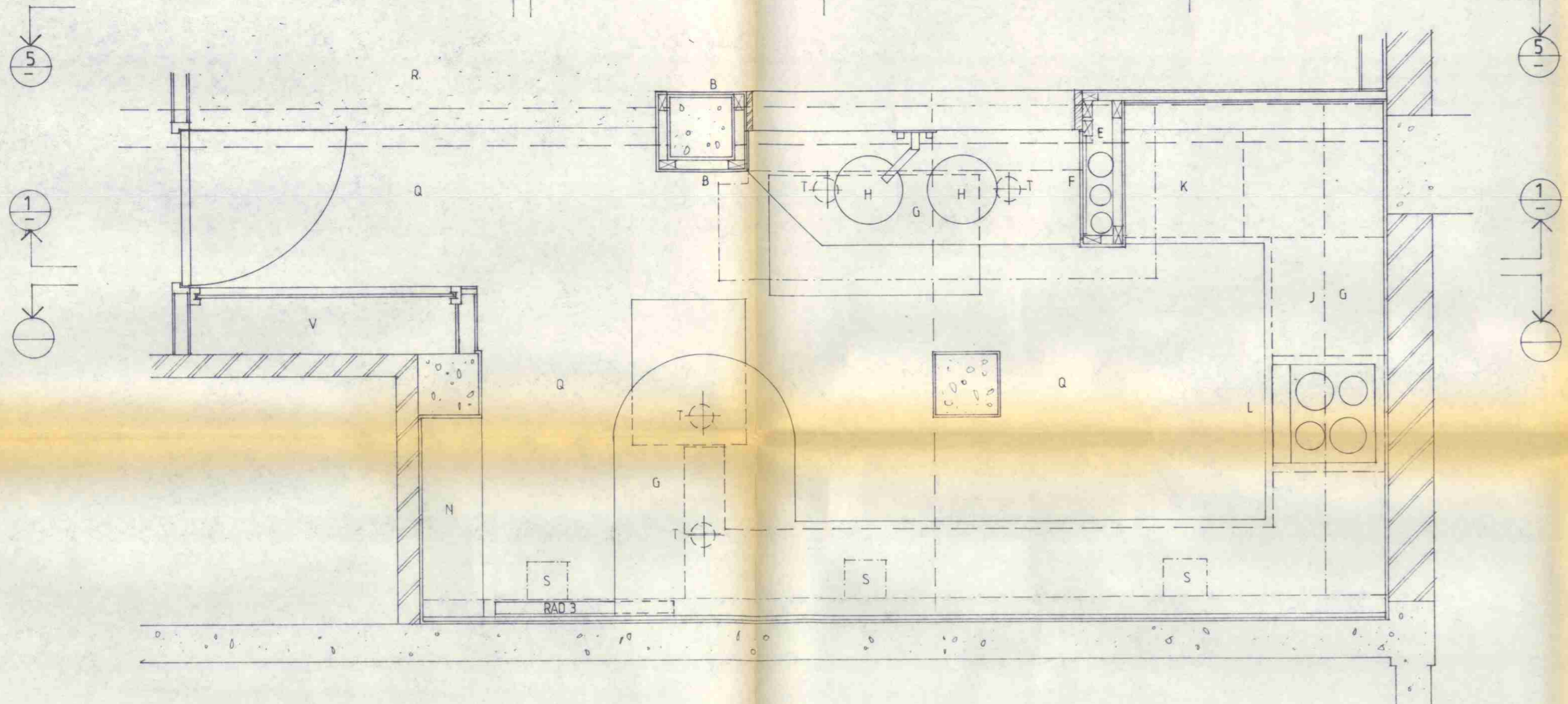
1 ELEVATION TO LIVING RM



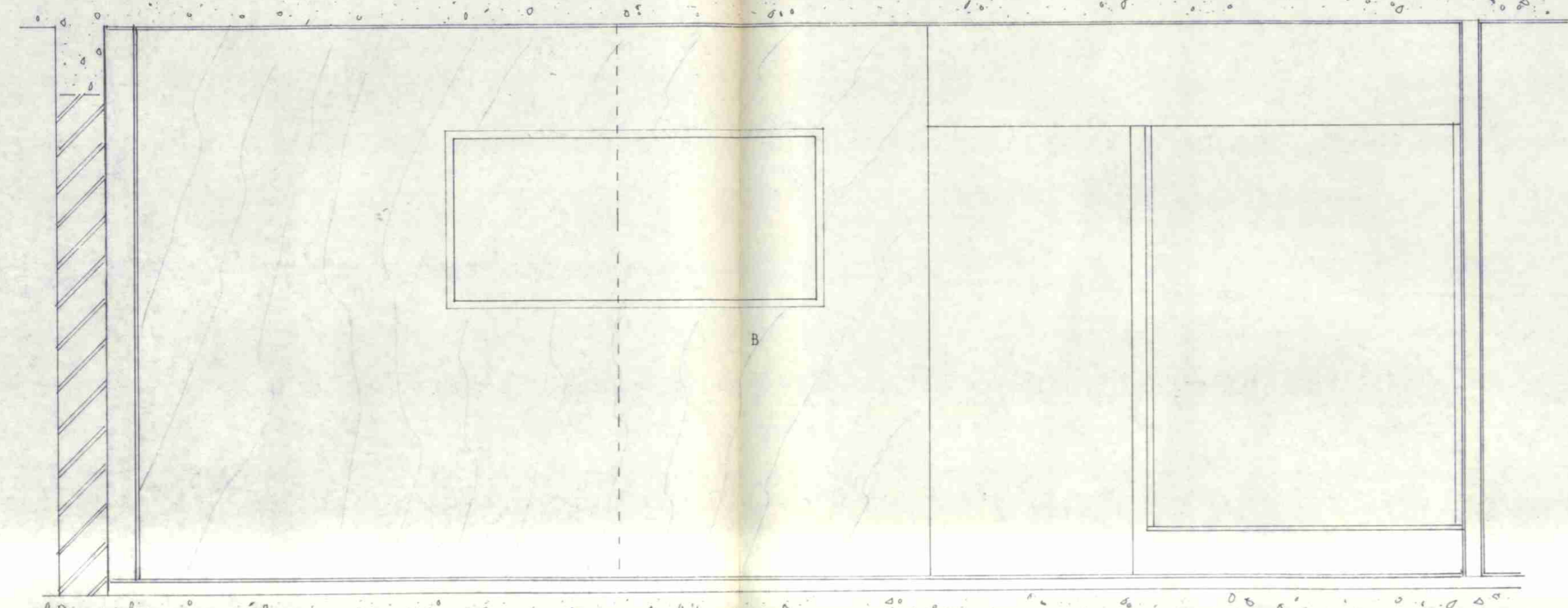
2 SECTION



3 SECTION



4 PLAN



5 SECTION

LONDON BOROUGH OF CAMDEN  
TOWN AND COUNTRY PLANNING ACTS  
20 APR 1995  
PLANS APPROVED  
ON BEHALF OF THE COUNCIL

9470310  
9401960

- A Existing kitchen fittings removed, suspended ceiling and end section and return of hardwood panelled partition including tambour shutter taken down, 1 no. HW faced drawer unit, 1 no. st.st. sink unit and HW faced ply panelling to be set aside for possible re-use.
- B Provide new sections of HW faced ply panelling using salvaged material where possible and elsewhere new matching material. New solid hardwood lining to four faces of opening above new sink.
- C New plaster finish suspended ceiling.
- D Plain white ceramic tile band above worktop.
- E Service void.
- F Paint finish mdf access panels.
- G Laminate finish worktop.
- H Stainless steel sink unit with wall-mounted mixer tap and chrome finish bottle trap and waste connection.
- J Integral dishwasher below work-top.
- K Integral fridge with freezer compartment.
- L Integral electric hob and low level oven with extract hood over.
- M High level cupboard, plain white laminate finish unit with make-up piece to top and ends and incorporating concealed strip lights below.
- N New shelving in recess.
- U Paint finish mdf ceiling panel with integral recessed down-lighters and concealed strip up-lighters.
- P Drawer unit below worktop.
- Q Welded vinyl floor finish with integral covered perimeter skirting and carried across 2 no. tray type inspection chamber covers.
- R Carpet finish to living room with stainless steel edge strip at junction with kitchen floor.
- S Wall-mounted up-lighter.
- T Recessed down-lighter.
- V Existing electrical cupboard.
- W Concealed strip light.

AVANTI  
ARCHITECTS  
LIMITED  
TORRIANO MEWS  
LONDON NW5 2RZ  
TELEPHONE  
071 284 1616  
FACSIMILE  
071 284 1555

job  
2 WILLOW ROAD  
LONDON NW3

PROPOSED WORKS

drawing  
LOWER GROUND LEVEL KITCHEN  
PROPOSED PLAN & SECTIONS  
SHEET 1

drawing no.  
9121.23

scale  
1:20

date  
11.94