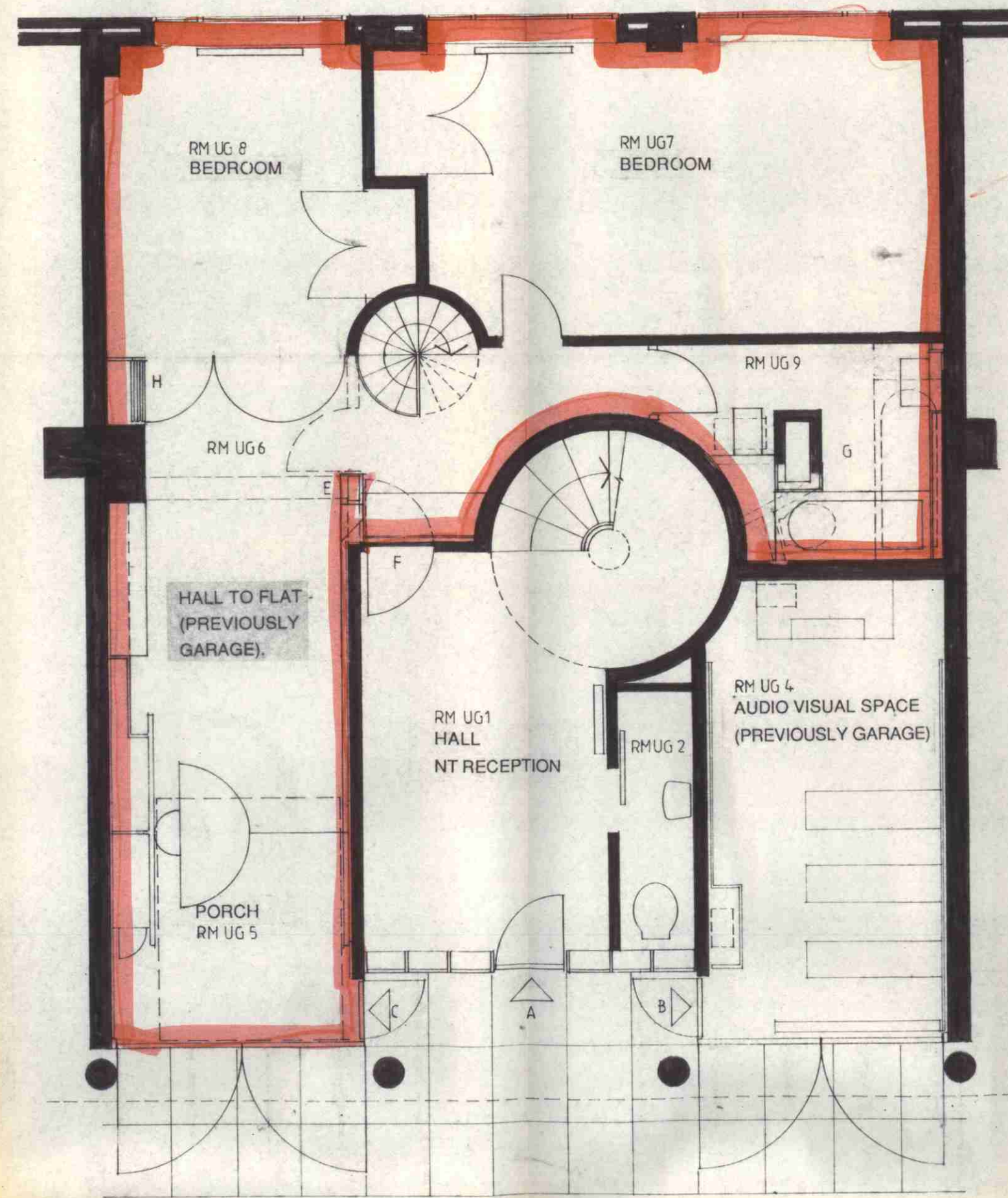


SECOND FLOOR LEVEL

- A Re-instate sliding folding partition to match original
- B Remove subsequent ply facing from sliding folding partition to allow opening, make good.
- C Remove door and shelves to reinstate access passage.
- D Remove cupboard and re-instate original bedhead recess.
- E Dumb waiter shaft (original doors preserved).

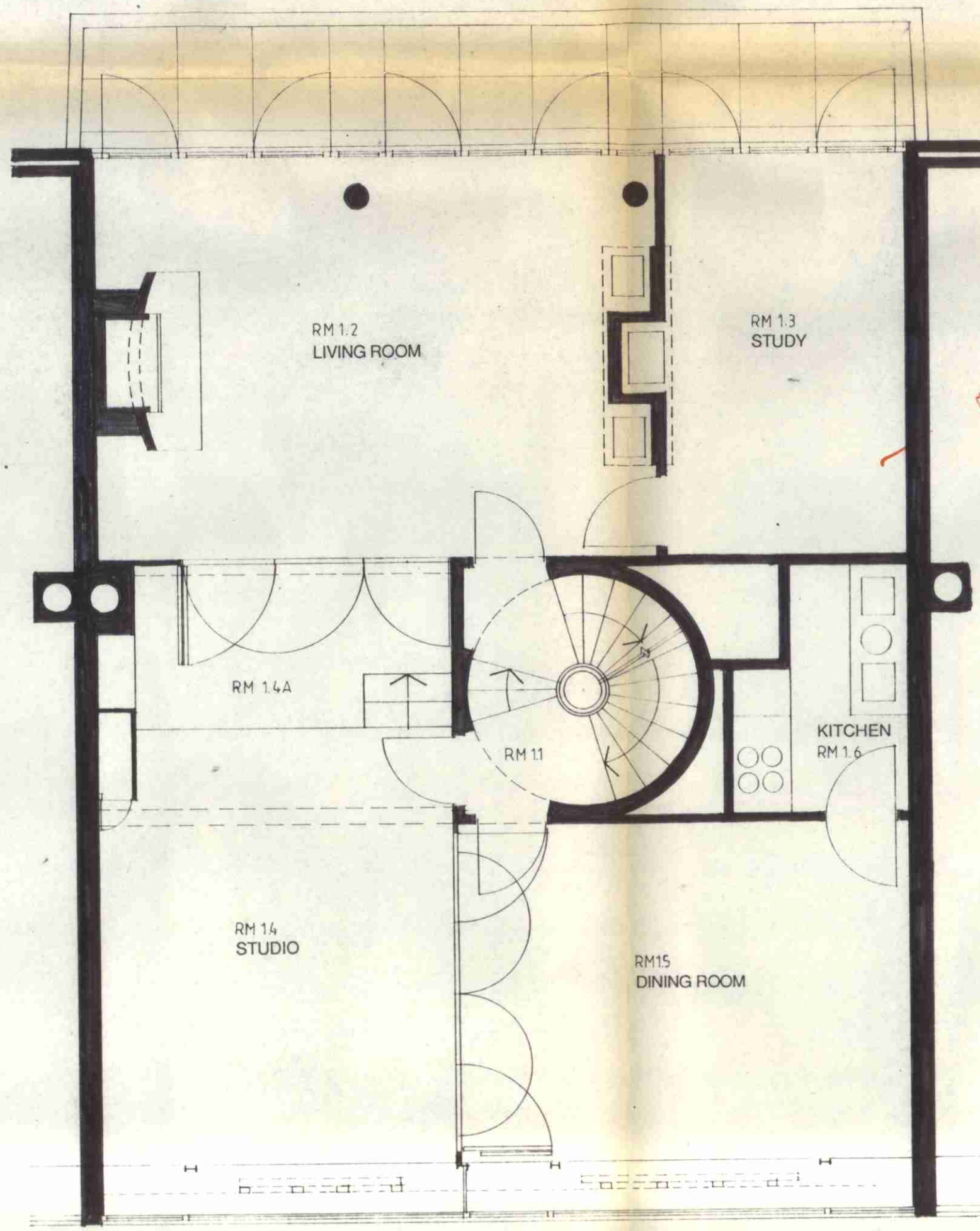
MUSEUM



UPPER GROUND LEVEL

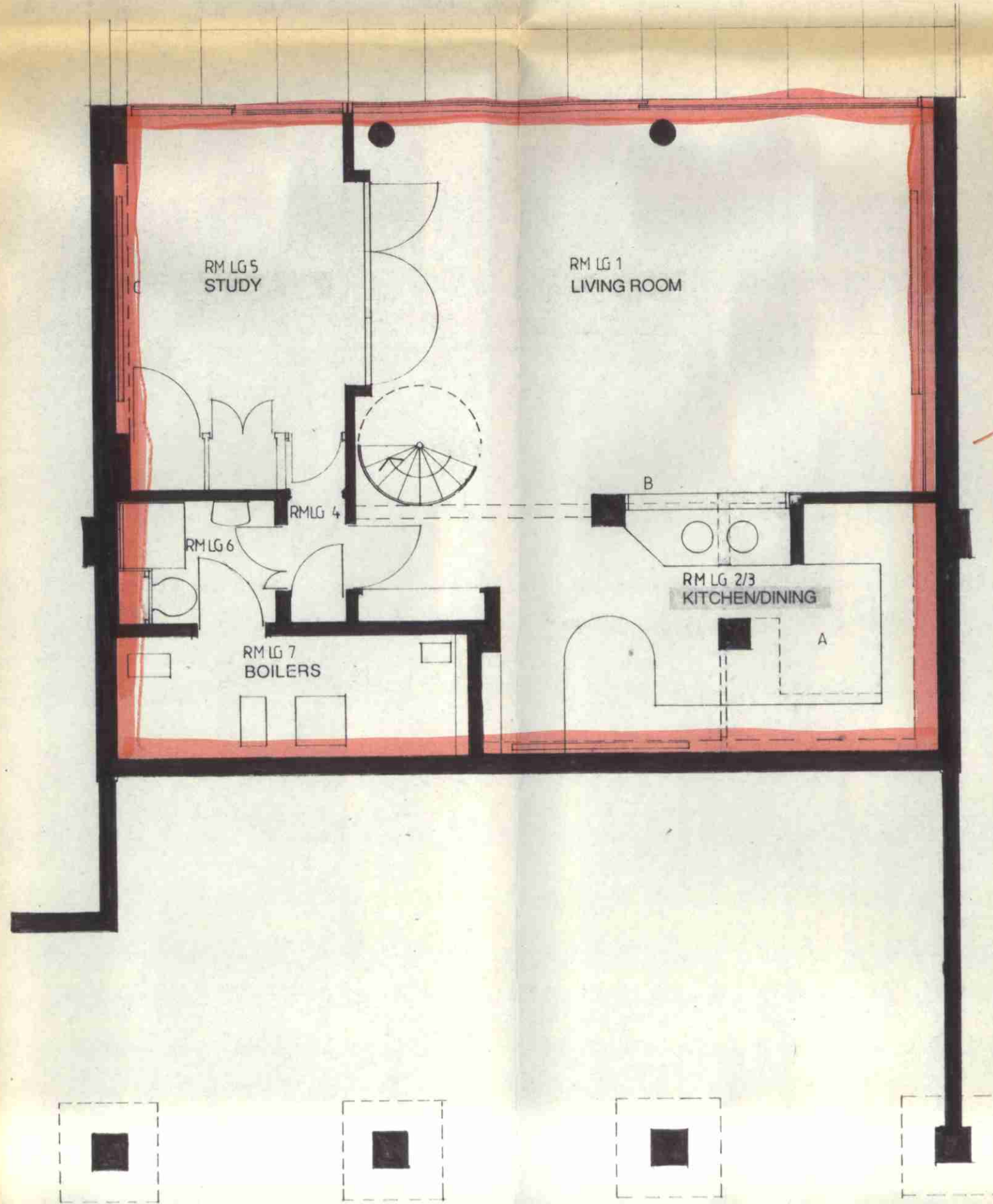
- A Entrance to house
- B Entrance to audio visual space
- C Entrance to flat
- D New glazed screen
- E Existing rear walls to garage removed
- F Existing door to flat fixed shut; fire resisting construction to rear face
- G Bathroom fittings to be replaced; ducting partially removed.
- H New sliding folding doors.

FLAT



FIRST FLOOR LEVEL

MUSEUM



LOWER GROUND LEVEL

- A Kitchen fittings to be replaced; original fittings to be saved.
- B Screen wall to living room modified and extended to match original.
- C Dry lining to party wall modified.

FLAT

947 5510  
940 6000

LONDON BOROUGH OF CAMDEN  
TOWN AND COUNTRY PLANNING ACTS  
20 APR 1995  
PLANS APPROVED  
ON BEHALF OF THE COUNCIL

Rev A 51294 Revisions to Rms U1:569  
LG 2:35.6 Survey information  
added.

AVANTI  
ARCHITECTS  
LIMITED  
TORRIANO MEWS  
LONDON NW5 2RZ  
TELEPHONE  
071 284 1616  
FACSIMILE  
071 284 1555

2 WILLOW ROAD  
LONDON NW3

PROPOSED WORKS  
DRAWING  
PROPOSED PLANS:  
SECOND, FIRST, UPPER AND  
LOWER GROUND LEVEL PLANS

drawing no. 9121.10 A

scale 1:50

date SEPT 94