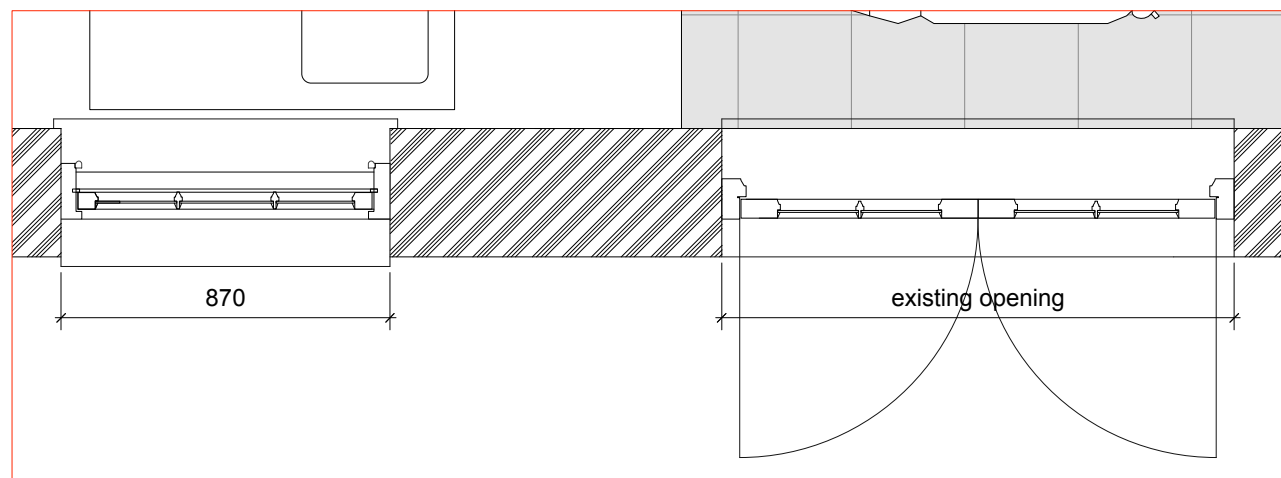
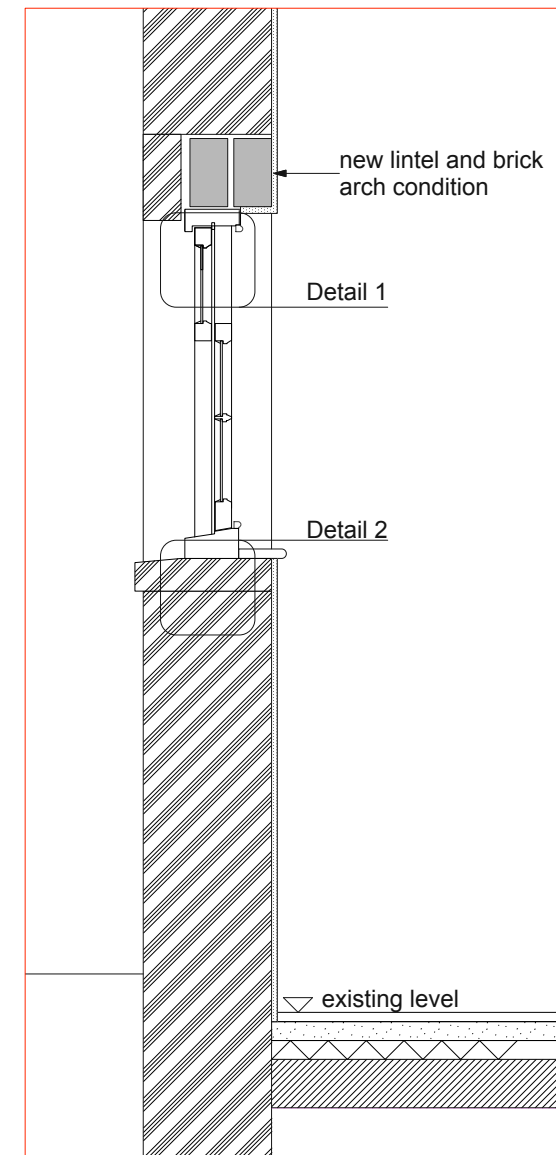


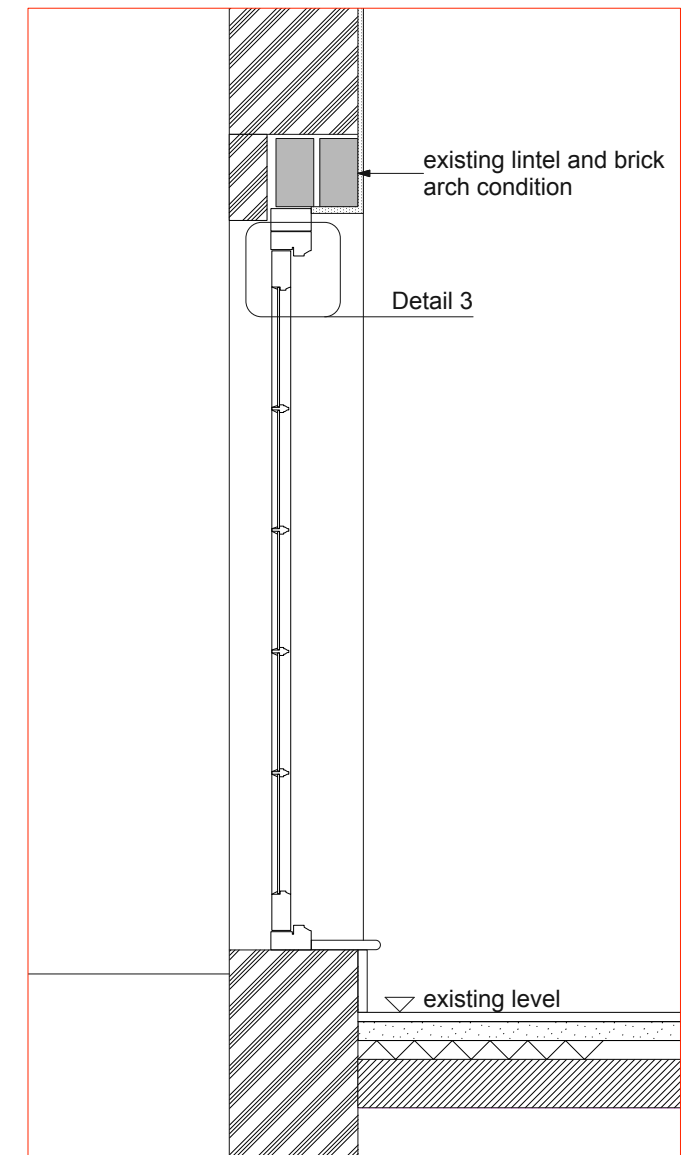
Part Rear Elevation



Part Plan



Section AA



Section BB



Notes

Timber Window - comprises of:  
Sliding sash, timber framed, single glazed  
Putty fixed glazing

Timber French Doors - comprises of:  
Outward opening, timber framed, single glazed,  
Putty fixed glazing

Rev PL-1 Description Sash configuration reversed to 3 over 6

Date 27/06/19

Client Dr Morris

Drawing Status Planning

Job Number P568  
Job Title 4 Pond Square

Scale 1:20@A3  
Date 27/02/19

Drawn By MKS  
Checked By

ARCHER ARCHITECTS LLP

Ground Floor West  
Coate House  
1-3 Coate Street  
London E2 9AG

Drawing Title Proposed timber window and French doors

Drawing No P568/02/201

Rev PL-1

t: 020 7739 2424  
f: 020 7739 1818  
e: studio@archerarchitects.com  
www.archerarchitects.com

DO NOT SCALE FROM THIS DRAWING  
ALL DIMENSIONS ARE TO BE CHECKED ON SITE  
THIS DRAWING IS TO BE READ IN CONJUNCTION WITH ALL CONSULTANTS INFORMATION  
ARCHER ARCHITECTS RETAIN THE COPYRIGHT OF ALL INFORMATION WITHIN THIS DRAWING