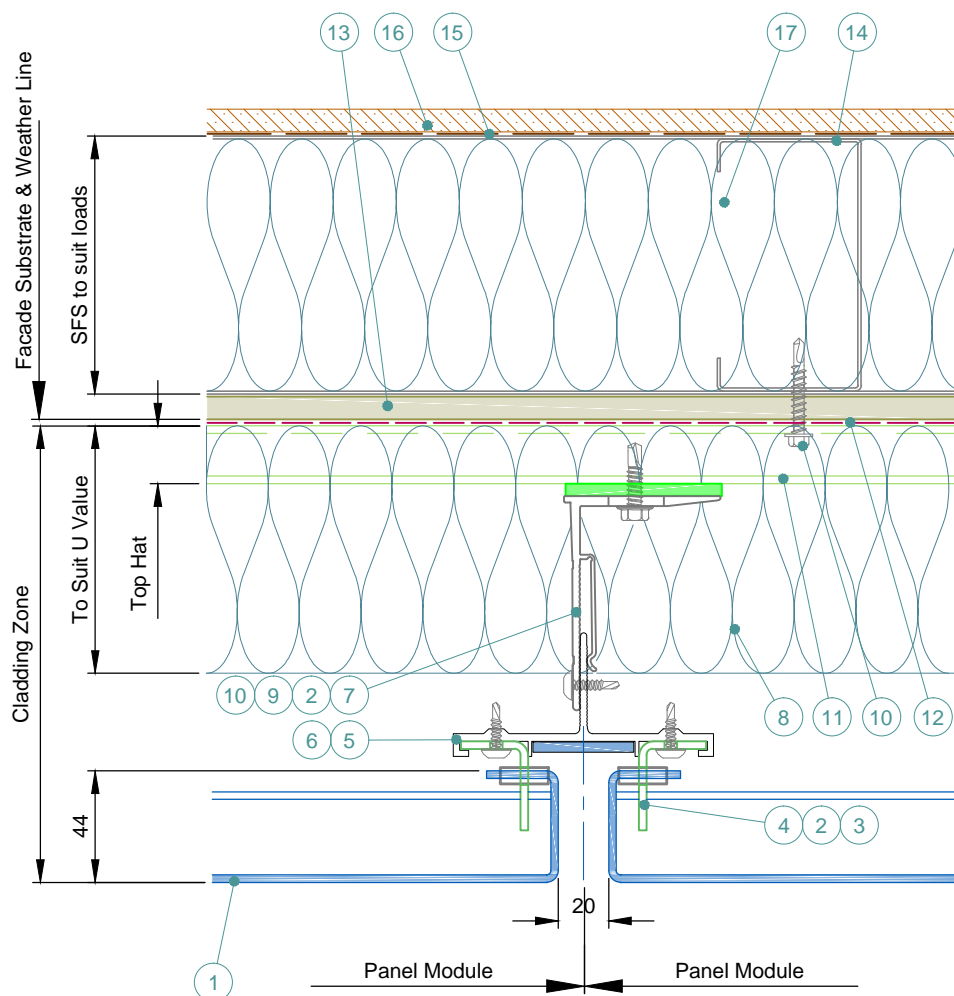




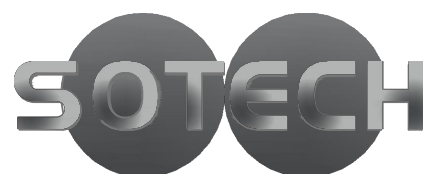
# SOTECH OPTIMA LZ

Versatile | Fully Independently CWCT Tested and Certified | Completely Secret Fixed





- 1 Optima LZ Panel. Finish to suit project.
- 2 Self Drill Fastener(Ejot JT4-ZT-4-4.8x19).
- 3 PVC Anti Rattle Clip
- 4 Hook Plate
- 5 Optima LZ Carrier Profile
- 6 Optional Colour Match Strip
- 7 Nvelope Handsfree Bkt - to suit zone & ctrs to suit loadings.
- 8 Insulation - thickness & type to suit specification. By Others.
- 9 Isolator.
- 10 Tek Fixing - type to suit substrate material. By Others.
- 11 Top Hat - material to suit span. By Others.
- 12 Breathable Membrane. By Others.
- 13 Cementitious Board (or similar), thickness to suit specification. By Others.
- 14 SFS Substrate - profile size & centres to suit loadings. By Others.
- 15 V.C.L. - if required. By Others.
- 16 Internal Finish. By Others.
- 17 Insulation - If required. By Others.

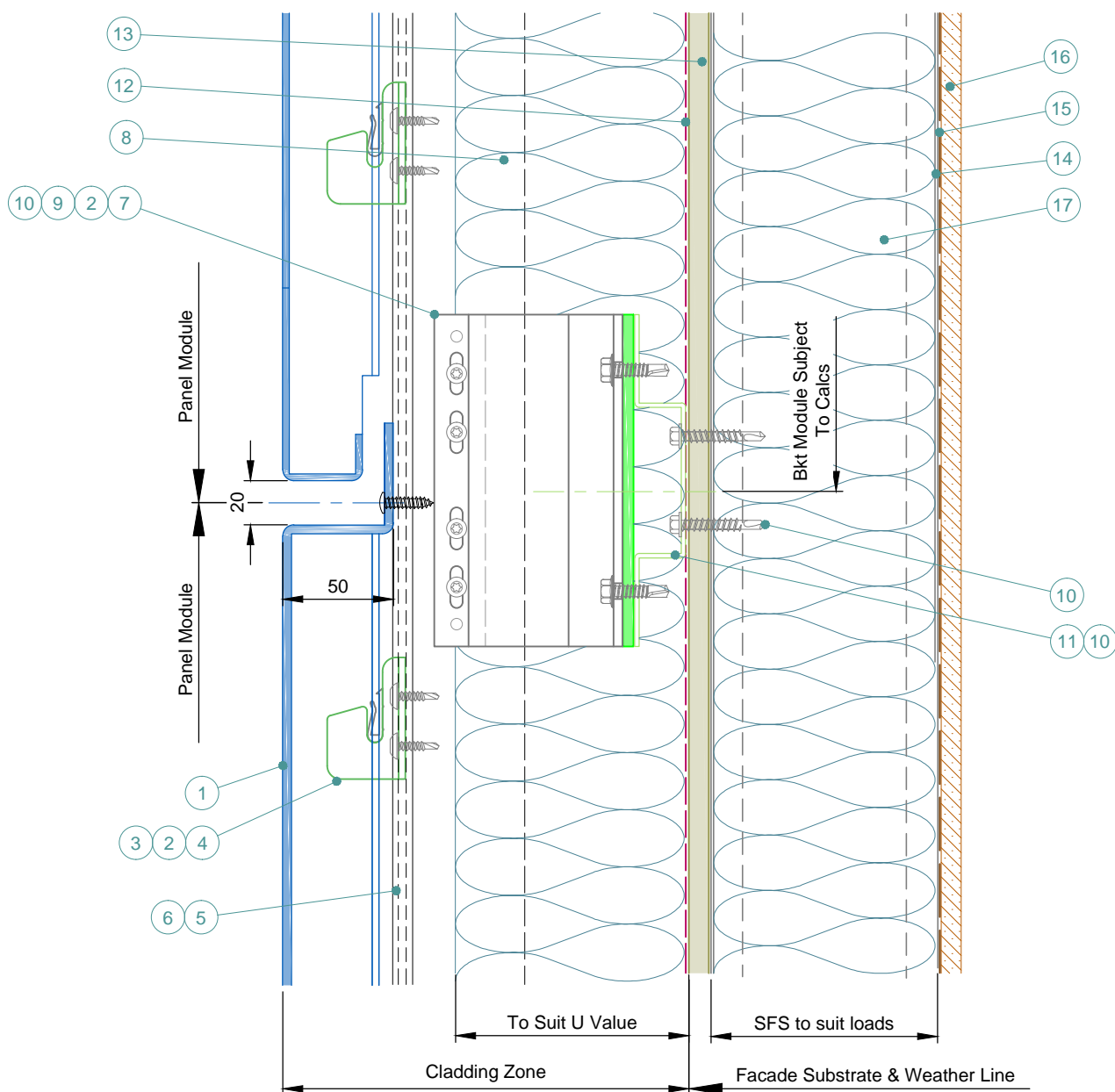


Sotech Ltd  
 2 Traynor Way  
 Whitehouse Business Park  
 Peterlee  
 County Durham  
 SR8 2RU  
 Tel: 0191 587 2287  
 Fax: 0191 518 0703  
 www.sotech-optima.co.uk

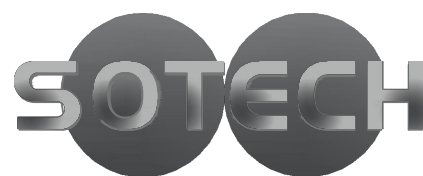
Title:  
 Optima LZ  
 Vertical Joint

Dwg No:	LZ-01	Drawn By:	DD	Date:	08.04.16
Scale:	1:3 @A4	Checked By:	Sotech	Rev:	A





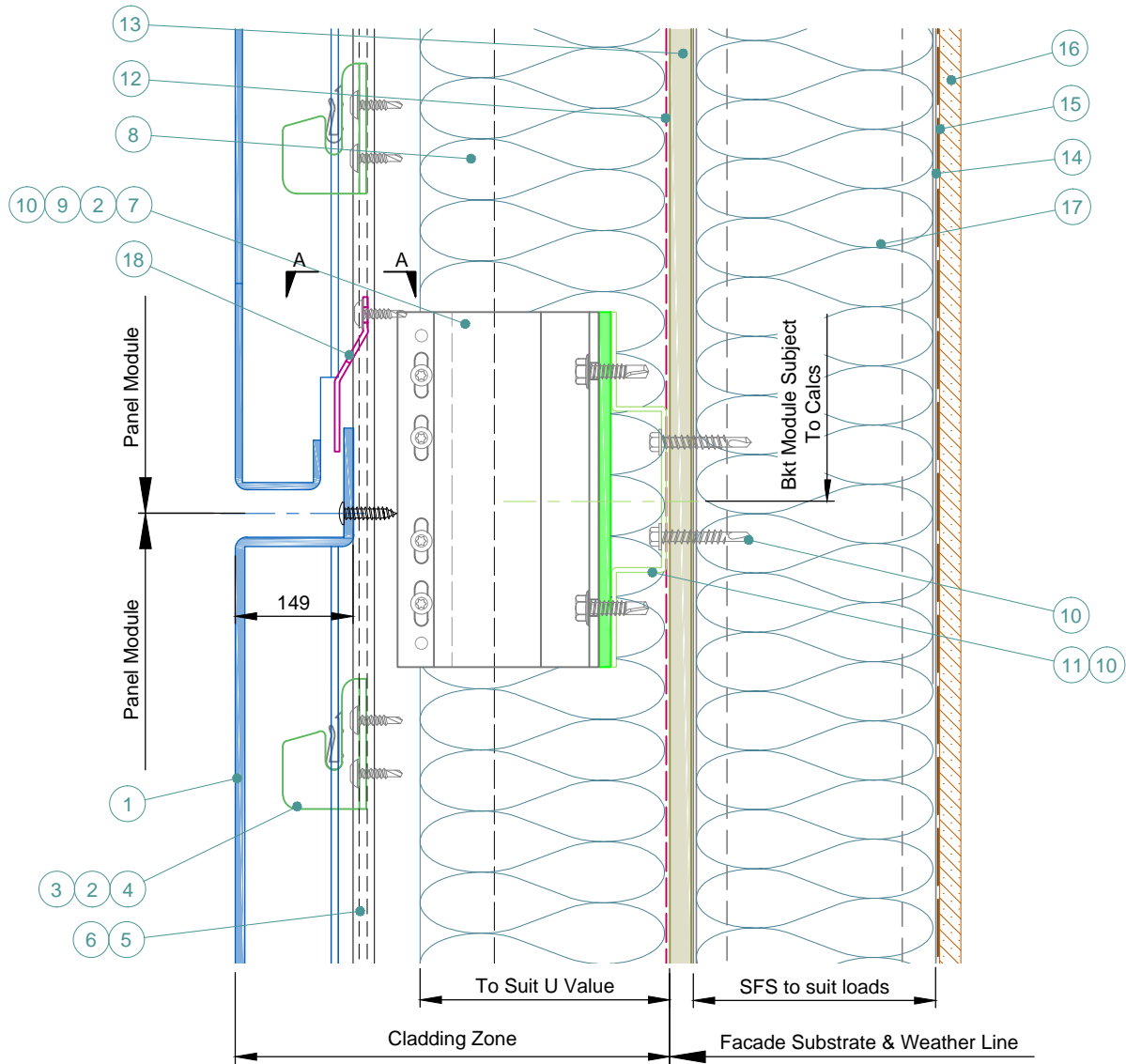
- 1 Optima LZ Panel. Finish to suit project.
- 2 Self Drill Fastener(Ejot JT4-ZT-4-4.8x19).
- 3 PVC Anti Rattle Clip
- 4 Hook Plate
- 5 Optima LZ Carrier Profile
- 6 Optional Colour Match Strip
- 7 Nvelope Handsfree Bkt - to suit zone & ctrs to suit loadings.
- 8 Insulation - thickness & type to suit specification. By Others.
- 9 Isolator.
- 10 Tek Fixing - type to suit substrate material. By Others.
- 11 Top Hat - material to suit span. By Others.
- 12 Breathable Membrane. By Others.
- 13 Cemetitious Board (or simiar), thickness to suit specification. By Others.
- 14 SFS Substrate - profile size & centres to suit loadings. By Others.
- 15 V.C.L. - if required. By Others.
- 16 Internal Finish. By Others.
- 17 Insulation - If required. By Others.



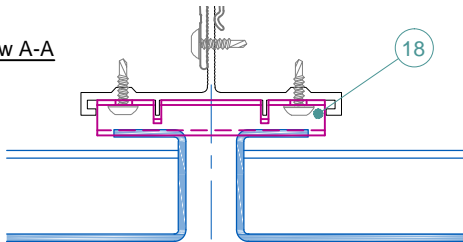
Sotech Ltd  
 2 Traynor Way  
 Whitehouse Business Park  
 Peterlee  
 County Durham  
 SR8 2RU  
 Tel: 0191 587 2287  
 Fax: 0191 518 0703  
 www.sotech-optima.co.uk

Title: Optima LZ  
 Horizontal Joint Detail

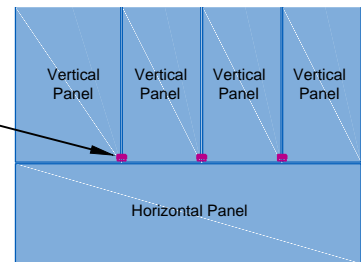
Dwg No:	LZ-03	Drawn By:	DD	Date:	08.04.16
Scale:	1:3 @A4	Checked By:	Sotech	Rev:	A



View A-A

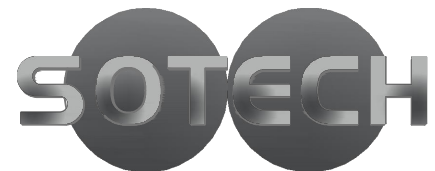


Deflector Blocks



Possible Panel Installation

- 1 Optima LZ Panel. Finish to suit project.
- 2 Self Drill Fastener(Ejot JT4-ZT-4-4.8x19).
- 3 PVC Anti Rattle Clip
- 4 Hook Plate
- 5 Optima LZ Carrier Profile
- 6 Optional Colour Match Strip
- 7 Nvelope Handsfree Bkt - to suit zone & ctrs to suit loadings.
- 8 Insulation - thickness & type to suit specification. By Others.
- 9 Isolator.
- 10 Tek Fixing - type to suit substrate material. By Others.
- 11 Top Hat - material to suit span. By Others.
- 12 Breathable Membrane. By Others.
- 13 Cemeticious Board (or simiar), thickness to suit specification. By Others.
- 14 SFS Substrate - profile size & centres to suit loadings. By Others.
- 15 V.C.L. - if required. By Others.
- 16 Internal Finish. By Others.
- 17 Insulation - If required. By Others.
- 18 Deflector Pressing.



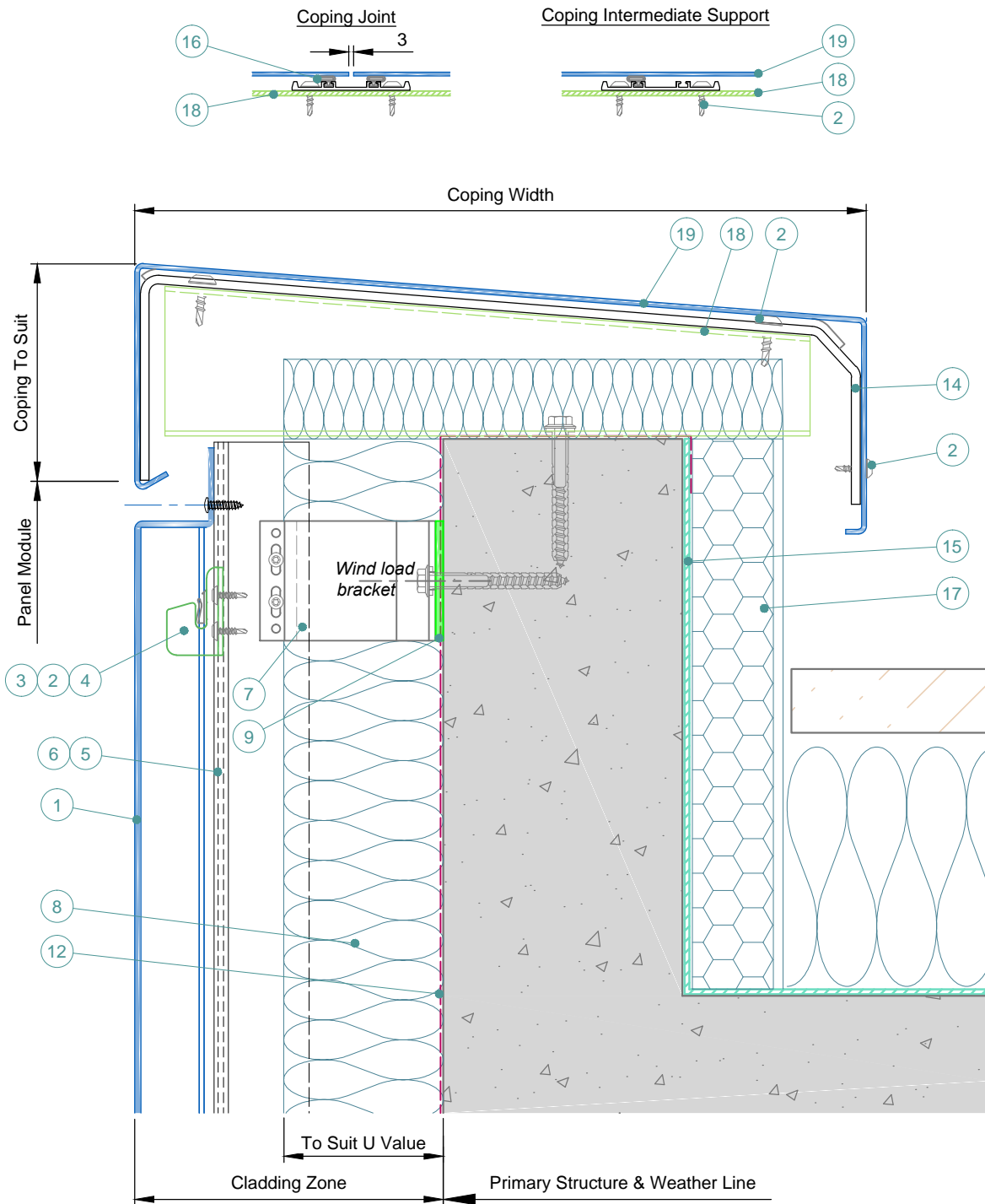
Sotech Ltd  
2 Traynor Way  
Whitehouse Business Park  
Peterlee  
County Durham  
SR8 2RU

Tel: 0191 587 2287  
Fax: 0191 518 0703  
www.sotech-optima.co.uk

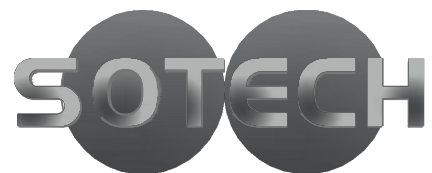
Title: Optima LZ  
Horizontal Joint With Deflector Pressing

Dwg No:	LZ-04	Drawn By:	DD	Date:	08.04.16
Scale:	1:3 @A4	Checked By:	Sotech	Rev:	A





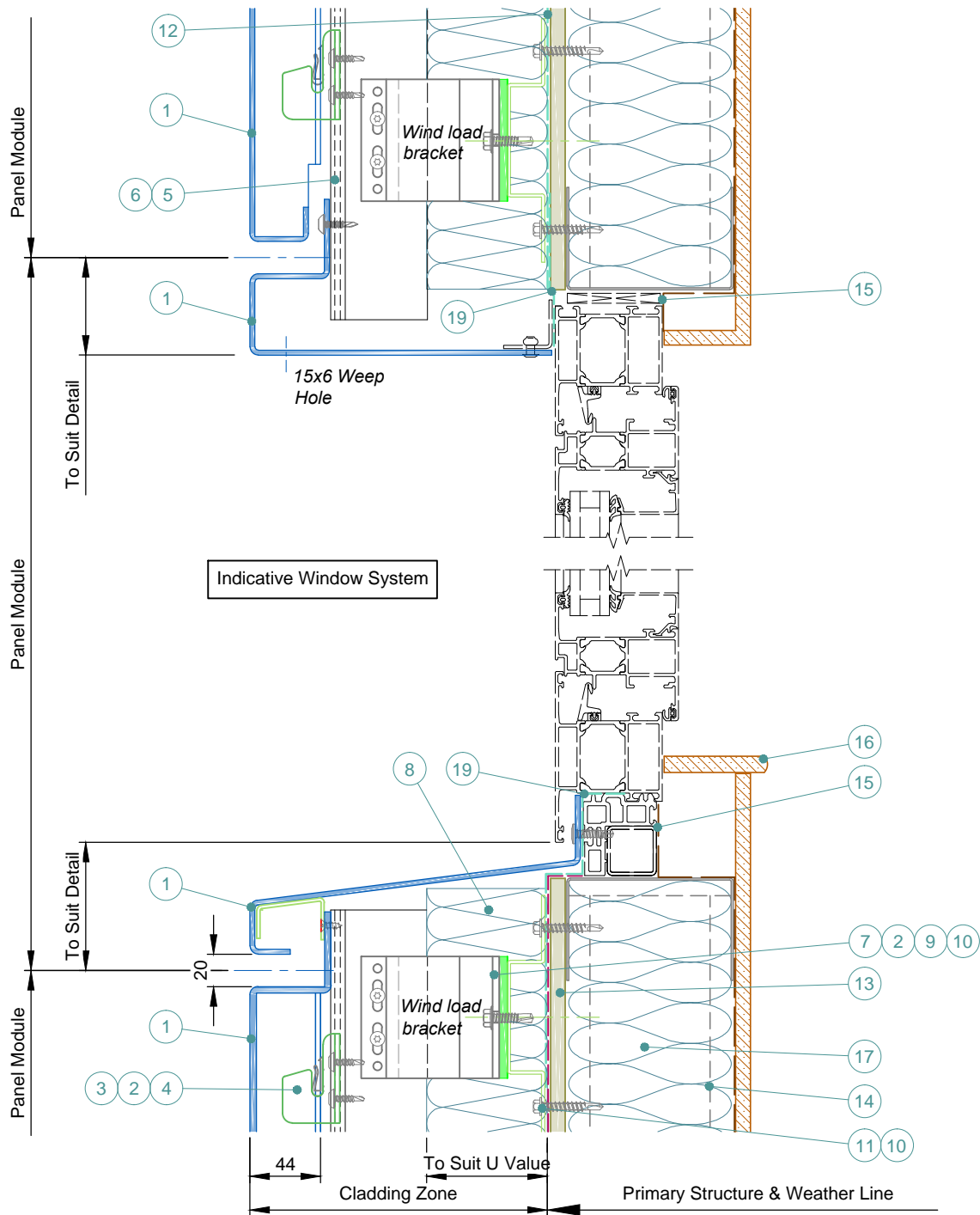
- 1 Optima LZ Panel. Finish to suit project.
- 2 Self Drill Fastener(Ejot JT4-ZT-4-4.8x19).
- 3 PVC Anti Rattle Clip
- 4 Hook Plate
- 5 Optima LZ Carrier Profile
- 6 Optional Colour Match Strip
- 7 Nvelope Handsfree Bkt - to suit zone & ctrs to suit loadings.
- 8 Insulation - thickness & type to suit specification. By Others.
- 9 Isolator.
- 10 Tek Fixing - type to suit substrate material. By Others.
- 11 Top Hat - material to suit span. By Others.
- 12 Breathable Membrane. By Others.
- 13 Cemeticious Board (or simiar), thickness to suit specification. By Others.
- 14 Extruded Carrier Profile With Gasket - centres to suit loads.
- 15 Membrane. By Others.
- 16 Gasket.
- 17 Insulation - If required. By Others.
- 18 Support Top Hat Bracket - thickness and material to suit loadings. By Others.
- 19 Aluminium Pressing - thickness to suit.



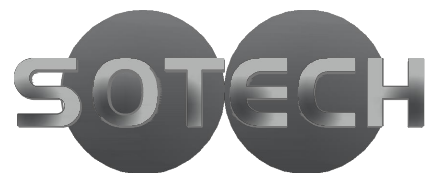
Sotech Ltd  
 2 Traynor Way  
 Whitehouse Business Park  
 Peterlee  
 County Durham  
 SR8 2RU  
 Tel: 0191 587 2287  
 Fax: 0191 518 0703  
 www.sotech-optima.co.uk

Title: Optima LZ  
 Copping Detail

Dwg No:	LZ-06	Drawn By:	DD	Date:	08.04.16
Scale:	1:4 @A4	Checked By:	Sotech	Rev:	A



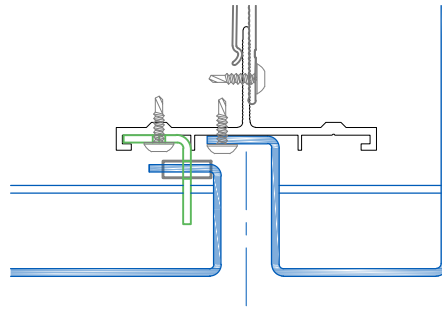
- 1 Optima LZ Panel. Finish to suit project.
- 2 Self Drill Fastener(Ejot JT4-ZT-4-4.8x19).
- 3 PVC Anti Rattle Clip
- 4 Hook Plate
- 5 Optima LZ Carrier Profile
- 6 Optional Colour Match Strip
- 7 Nvelope Handsfree Bkt - to suit zone & ctrs to suit loadings.
- 8 Insulation - thickness & type to suit specification. By Others.
- 9 Isolator.
- 10 Tek Fixing - type to suit substrate material. By Others.
- 11 Top Hat - material to suit span. By Others.
- 12 Breathable Membrane. By Others.
- 13 Cemetitious Board (or simiar), thickness to suit specification. By Others.
- 14 SFS Substrate - profile size & centres to suit loadings. By Others.
- 15 V.C.L. - if required. By Others.
- 16 Internal Finish. By Others.
- 17 Insulation - If required. By Others.
- 18 Support Bracket - thickness and material to suit loadings. By Others.
- 19 EPDM or similar. By Others.



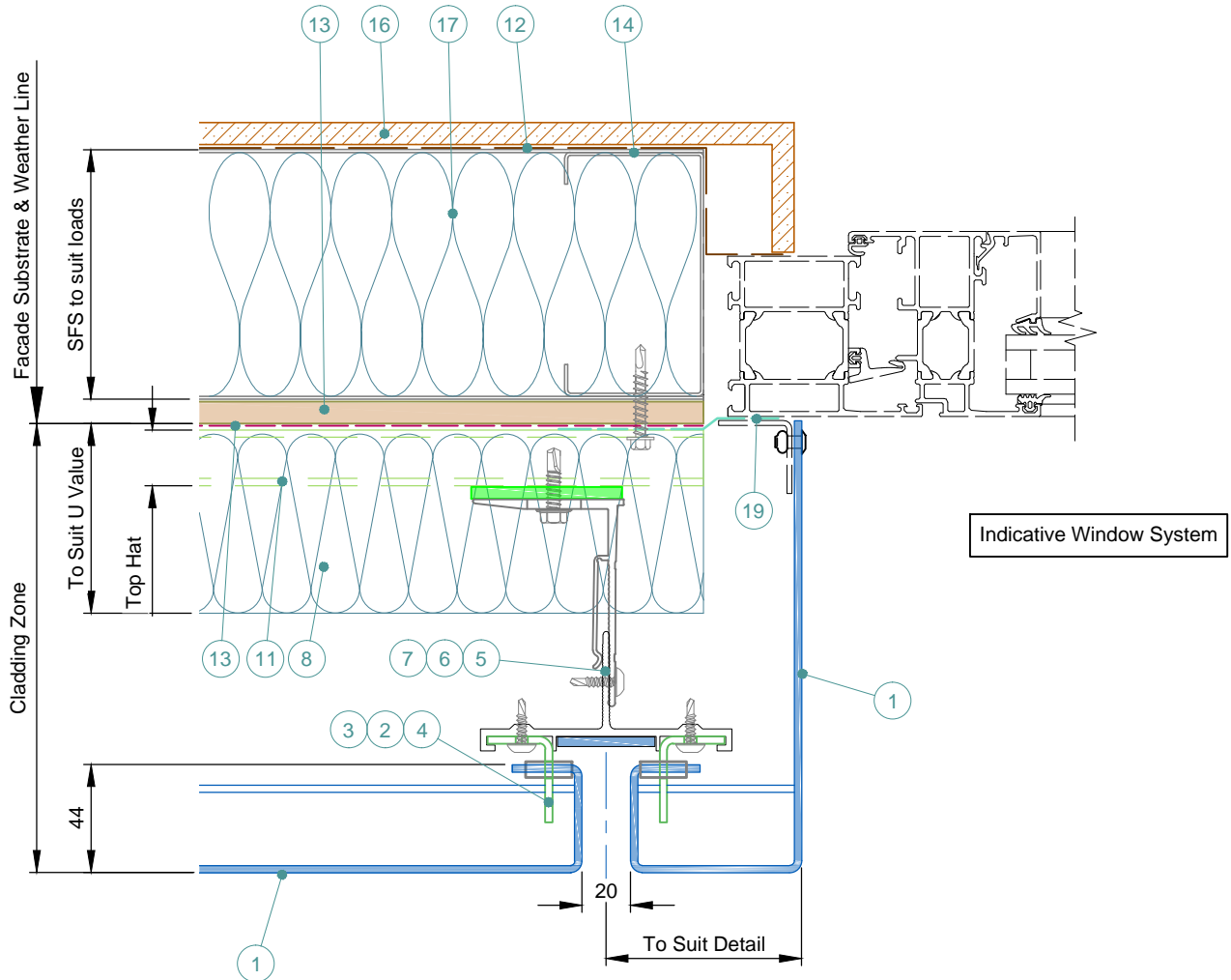
Sotech Ltd  
 2 Traynor Way  
 Whitehouse Business Park  
 Peterlee  
 County Durham  
 SR8 2RU  
 Tel: 0191 587 2287  
 Fax: 0191 518 0703  
 www.sotech-optima.co.uk

Title: Optima LZ  
 Vertical Window Interface

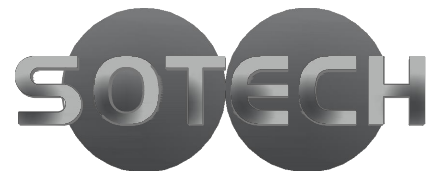
Dwg No:	LZ-07	Drawn By:	DD	Date:	08.04.16
Scale:	1:4 @A4	Checked By:	Sotech	Rev:	A



Flashing Fixing Option



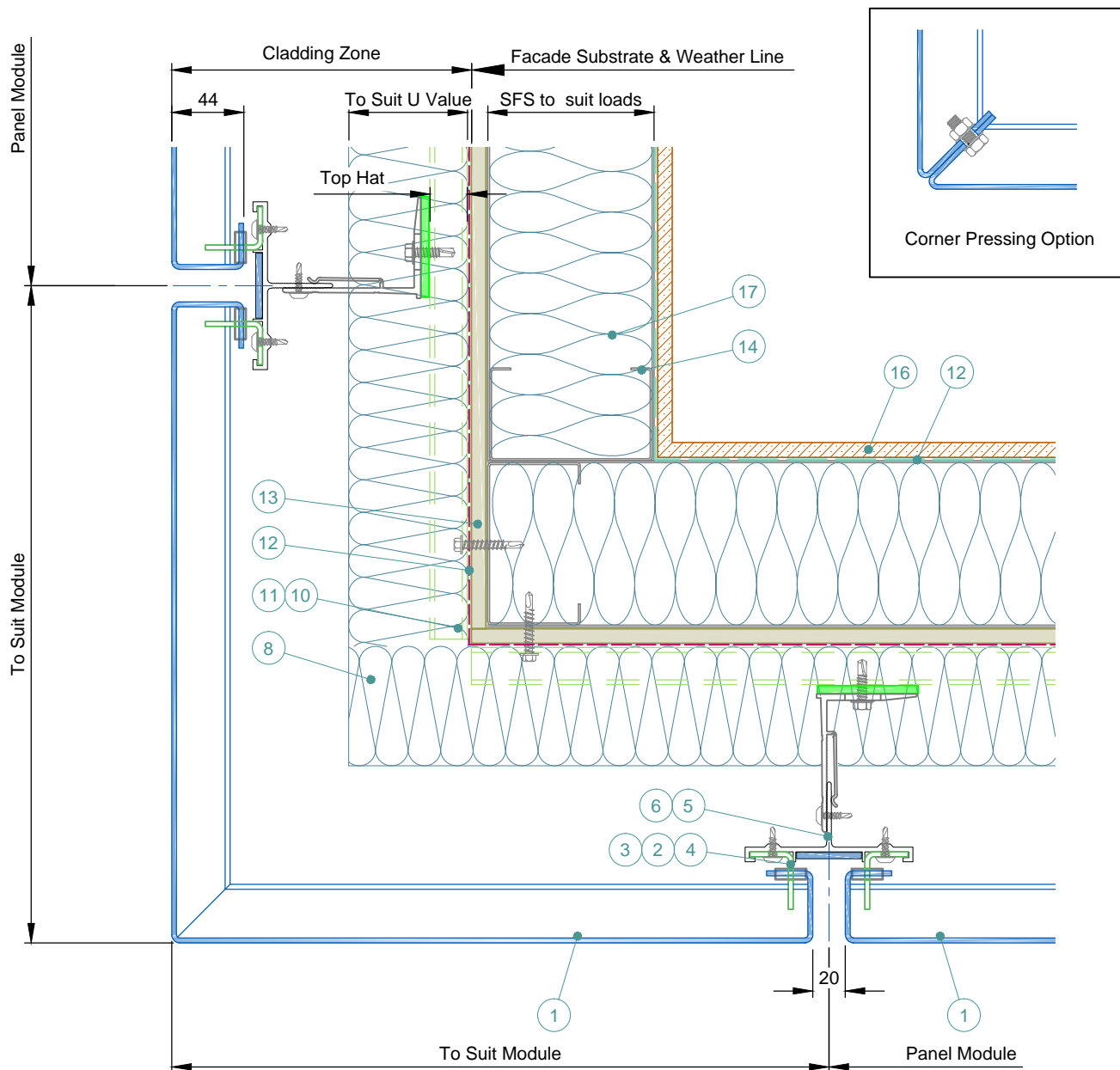
- 1 Optima LZ Panel. Finish to suit project.
- 2 Self Drill Fastener(Ejot JT4-ZT-4-4.8x19).
- 3 PVC Anti Rattle Clip
- 4 Hook Plate
- 5 Optima LZ Carrier Profile
- 6 Optional Colour Match Strip
- 7 Nvelope Handsfree Bkt - to suit zone & ctrs to suit loadings.
- 8 Insulation - thickness & type to suit specification. By Others.
- 9 Isolator.
- 10 Tek Fixing - type to suit substrate material. By Others.
- 11 Top Hat - material to suit span. By Others.
- 12 Breathable Membrane. By Others.
- 13 Cemeticious Board (or simiar), thickness to suit specification. By Others.
- 14 SFS Substrate - profile size & centres to suit loadings. By Others.
- 15 V.C.L. - if required. By Others.
- 16 Internal Finish. By Others.
- 17 Insulation - If required. By Others.
- 18 Support Bracket - thickness and material to suit loadings. By Others.
- 19 EPDM or similar. By Others.



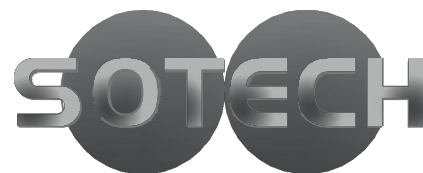
Sotech Ltd  
 2 Traynor Way  
 Whitehouse Business Park  
 Peterlee  
 County Durham  
 SR8 2RU  
 Tel: 0191 587 2287  
 Fax: 0191 518 0703  
 www.sotech-optima.co.uk

Title: Optima LZ  
 Horizontal Window Interface

Dwg No:	LZ-08	Drawn By:	DD	Date:	08.04.16
Scale:	1:3 @A4	Checked By:	Sotech	Rev:	A



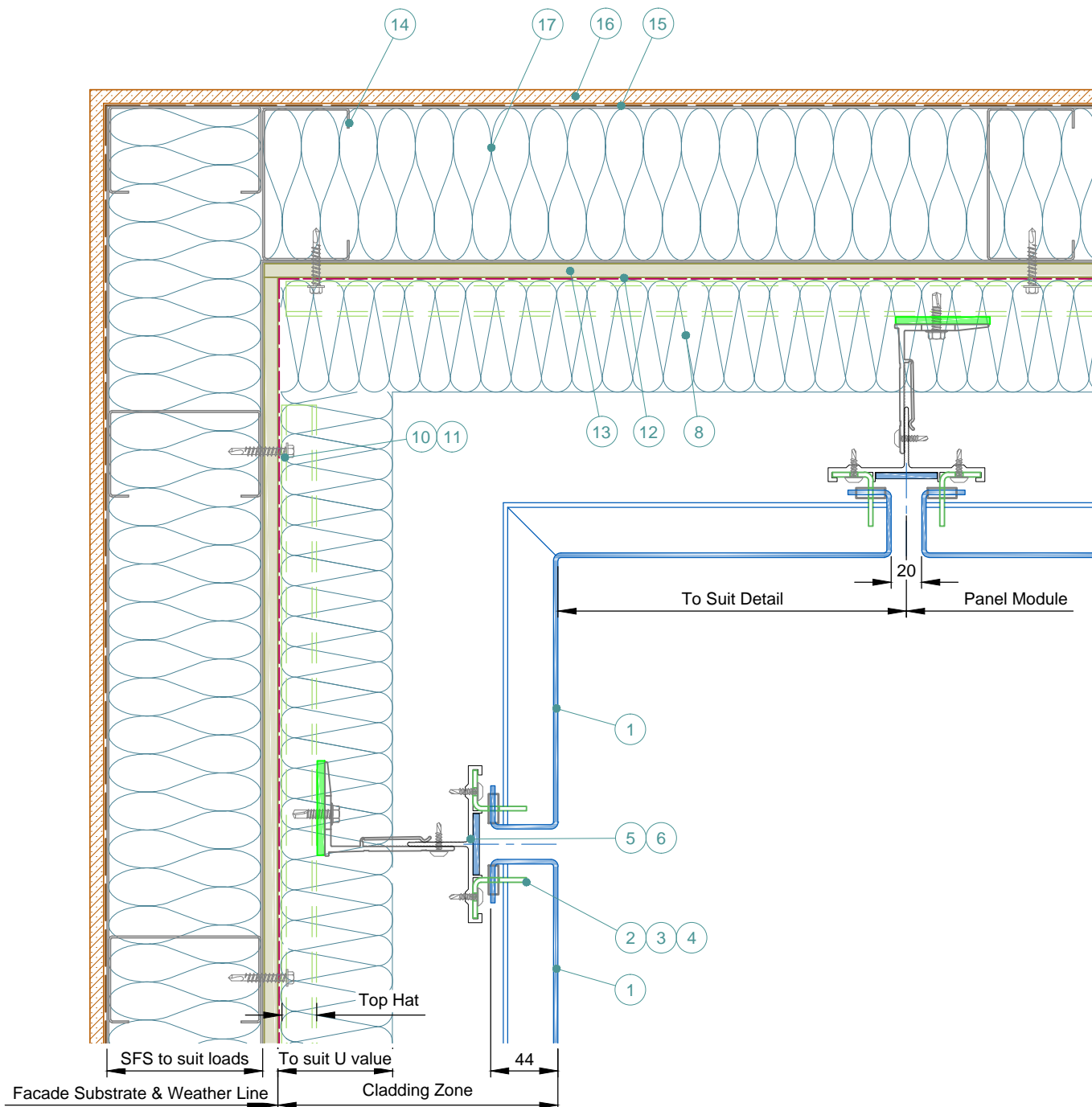
- 1 Optima LZ Panel. Finish to suit project.
- 2 Self Drill Fastener(Ejot JT4-ZT-4-4.8x19).
- 3 PVC Anti Rattle Clip
- 4 Hook Plate
- 5 Optima LZ Carrier Profile
- 6 Optional Colour Match Strip
- 7 Nvelope Handsfree Bkt - to suit zone & ctrs to suit loadings.
- 8 Insulation - thickness & type to suit specification. By Others.
- 9 Isolator.
- 10 Tek Fixing - type to suit substrate material. By Others.
- 11 Top Hat - material to suit span. By Others.
- 12 Breathable Membrane. By Others.
- 13 Cemeticious Board (or simiar), thickness to suit specification. By Others.
- 14 SFS Substrate - profile size & centres to suit loadings. By Others.
- 15 V.C.L. - if required. By Others.
- 16 Internal Finish. By Others.
- 17 Insulation - If required. By Others.



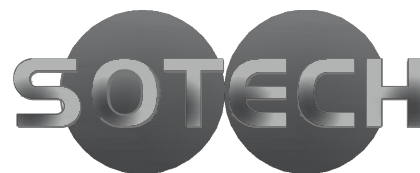
Sotech Ltd  
 2 Traynor Way  
 Whitehouse Business Park  
 Peterlee  
 County Durham  
 SR8 2RU  
 Tel: 0191 587 2287  
 Fax: 0191 518 0703  
 www.sotech-optima.co.uk

Title: Optima LZ  
 Typical External Corner

Dwg No:	LZ-09	Drawn By:	DD	Date:	08.04.16
Scale:	1:4 @A4	Checked By:	Sotech	Rev:	A

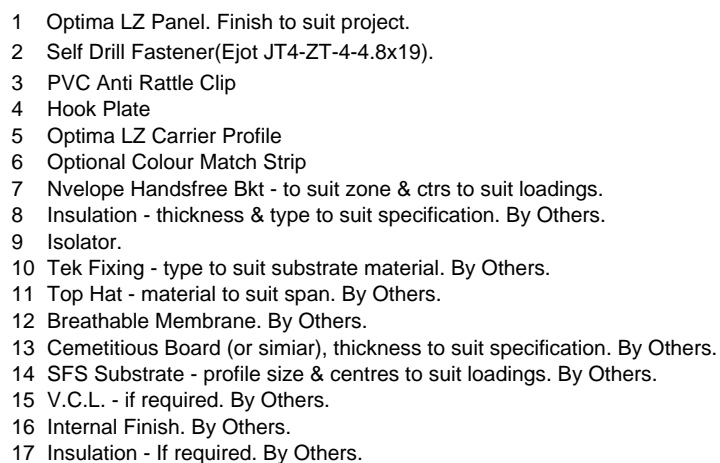


- 1 Optima LZ Panel. Finish to suit project.
- 2 Self Drill Fastener(Ejot JT4-ZT-4-4.8x19).
- 3 PVC Anti Rattle Clip
- 4 Hook Plate
- 5 Optima LZ Carrier Profile
- 6 Optional Colour Match Strip
- 7 Nvelope Handsfree Bkt - to suit zone & ctrs to suit loadings.
- 8 Insulation - thickness & type to suit specification. By Others.
- 9 Isolator.
- 10 Tek Fixing - type to suit substrate material. By Others.
- 11 Top Hat - material to suit span. By Others.
- 12 Breathable Membrane. By Others.
- 13 Cemeticious Board (or simiar), thickness to suit specification. By Others.
- 14 SFS Substrate - profile size & centres to suit loadings. By Others.
- 15 V.C.L. - if required. By Others.
- 16 Internal Finish. By Others.
- 17 Insulation - If required. By Others.



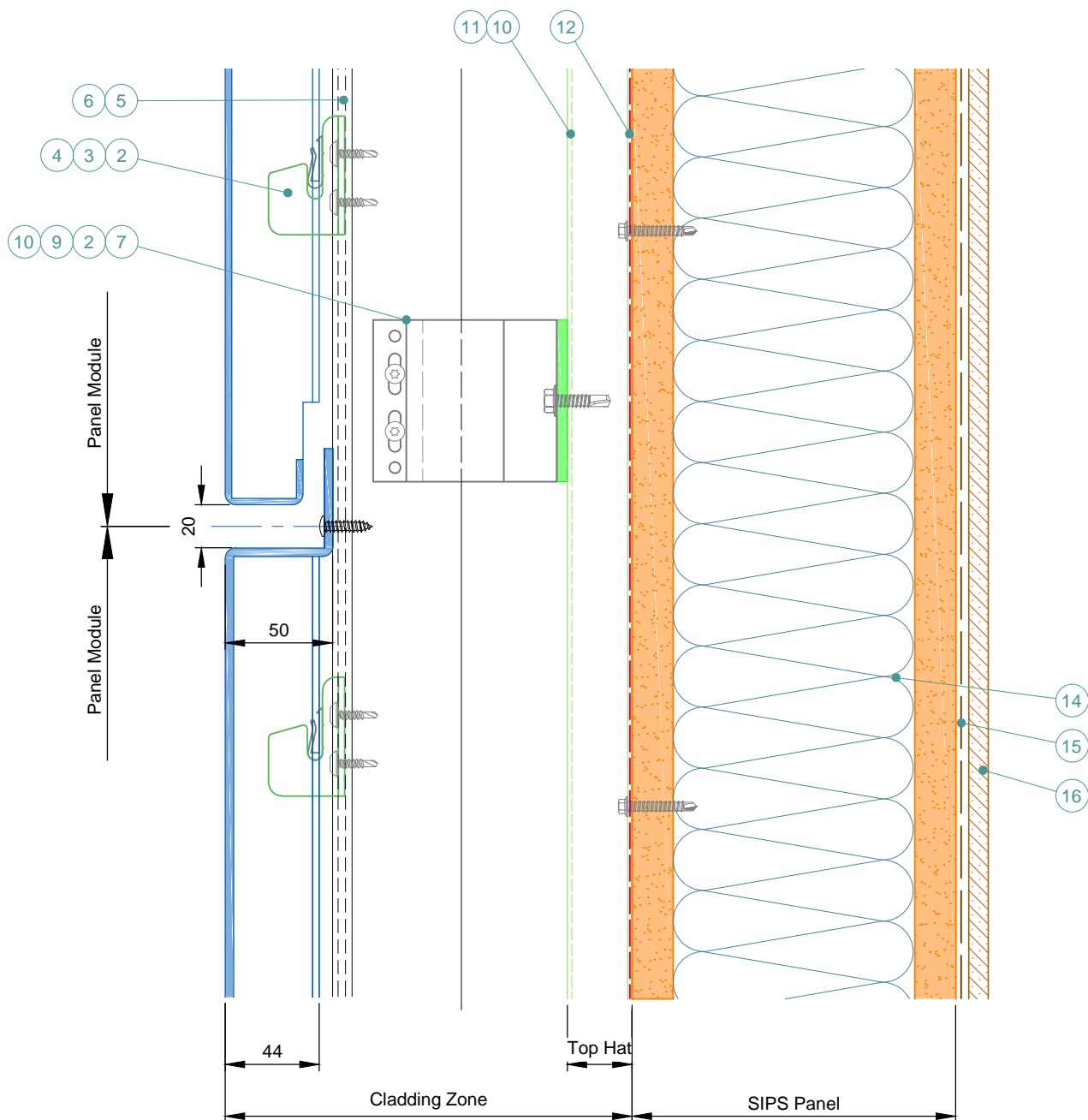
Sotech Ltd  
 2 Traynor Way  
 Whitehouse Business Park  
 Peterlee  
 County Durham  
 SR8 2RU  
 Tel: 0191 587 2287  
 Fax: 0191 518 0703  
 www.sotech-optima.co.uk

Title: Optima LZ Internal Corner		
Drg No: LZ-10	Drawn By: DD	Date: 08.04.16
Scale: 1:4 @A4	Checked By: Sotech	Rev: A

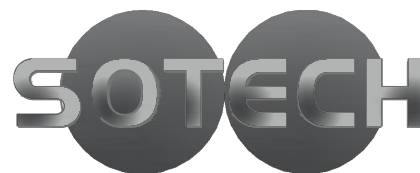


Title: Optima LZ  
Facade Abutment Detail

Drg No: <b>LZ-11</b>	Drawn By: <b>DD</b>	Date: <b>08.04.16</b>
Scale: <b>1:4 @A4</b>	Checked By: <b>Sotech</b>	Rev: <b>A</b>



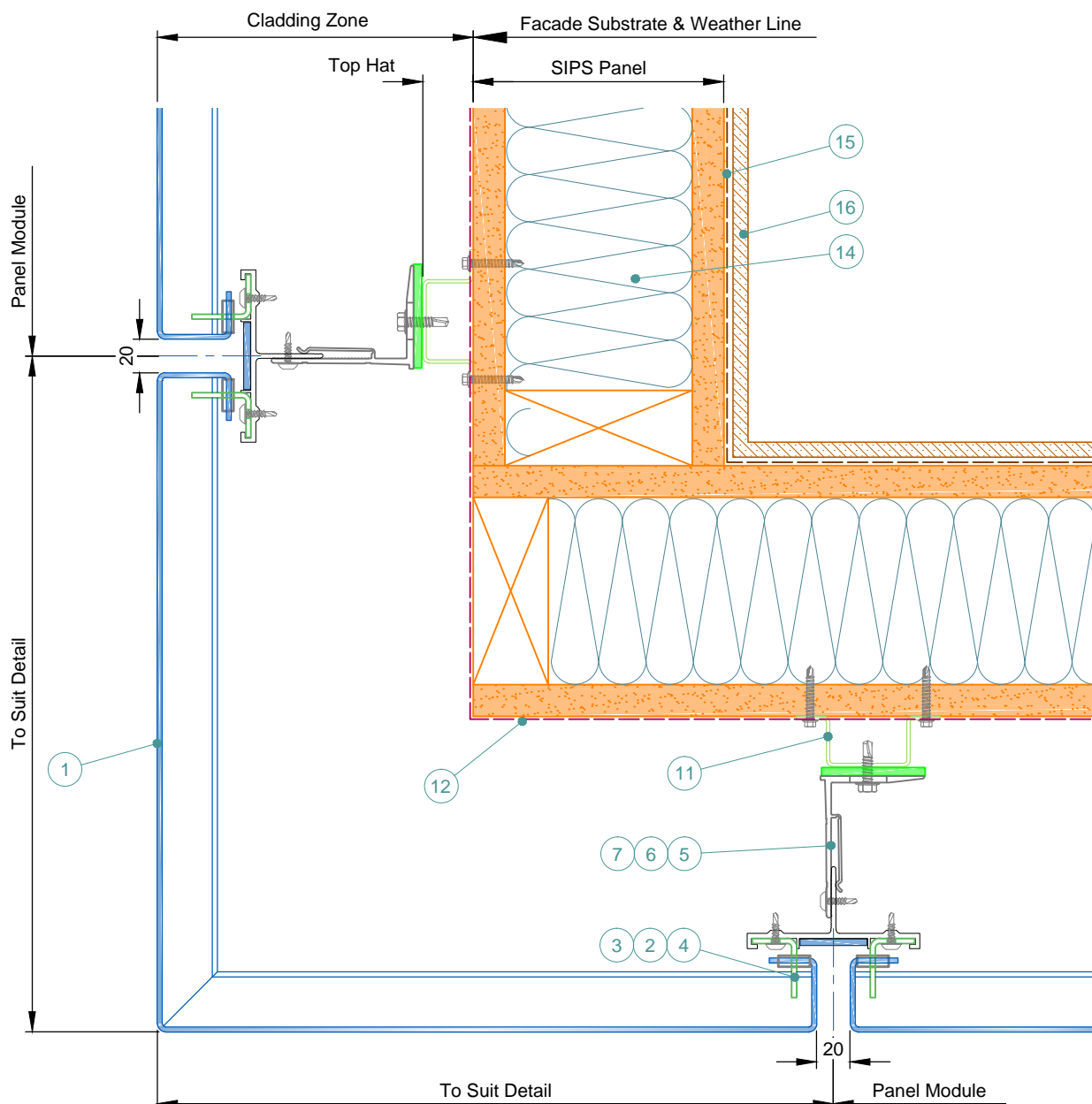
- 1 Optima LZ Panel. Finish to suit project.
- 2 Self Drill Fastener(Ejot JT4-ZT-4-4.8x19).
- 3 PVC Anti Rattle Clip
- 4 Hook Plate
- 5 Optima LZ Carrier Profile
- 6 Optional Colour Match Strip
- 7 Nvelope Handsfree Bkt - to suit zone & ctrs to suit loadings.
- 8 Insulation - thickness & type to suit specification. By Others.
- 9 Isolator.
- 10 Tek Fixing - type to suit substrate material. By Others.
- 11 Top Hat - material to suit span. By Others.
- 12 Breathable Membrane. By Others.
- 13 Cemetitious Board (or simiar), thickness to suit specification. By Others.
- 14 Insulated SIPS Panel. By Others.
- 15 V.C.L. - if required. By Others.
- 16 Internal Finish. By Others.
- 17 Insulation - If required. By Others.



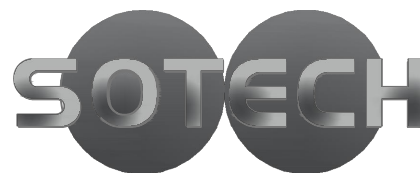
Sotech Ltd  
 2 Traynor Way  
 Whitehouse Business Park  
 Peterlee  
 County Durham  
 SR8 2RU  
 Tel: 0191 587 2287  
 Fax: 0191 518 0703  
 www.sotech-optima.co.uk

Title: Optima LZ  
 Horizontal Joint To SIPS Corner Panel

Drg No:	LZ-12	Drawn By:	DD	Date:	08.04.16
Scale:	1:3 @A4	Checked By:	Sotech	Rev:	A



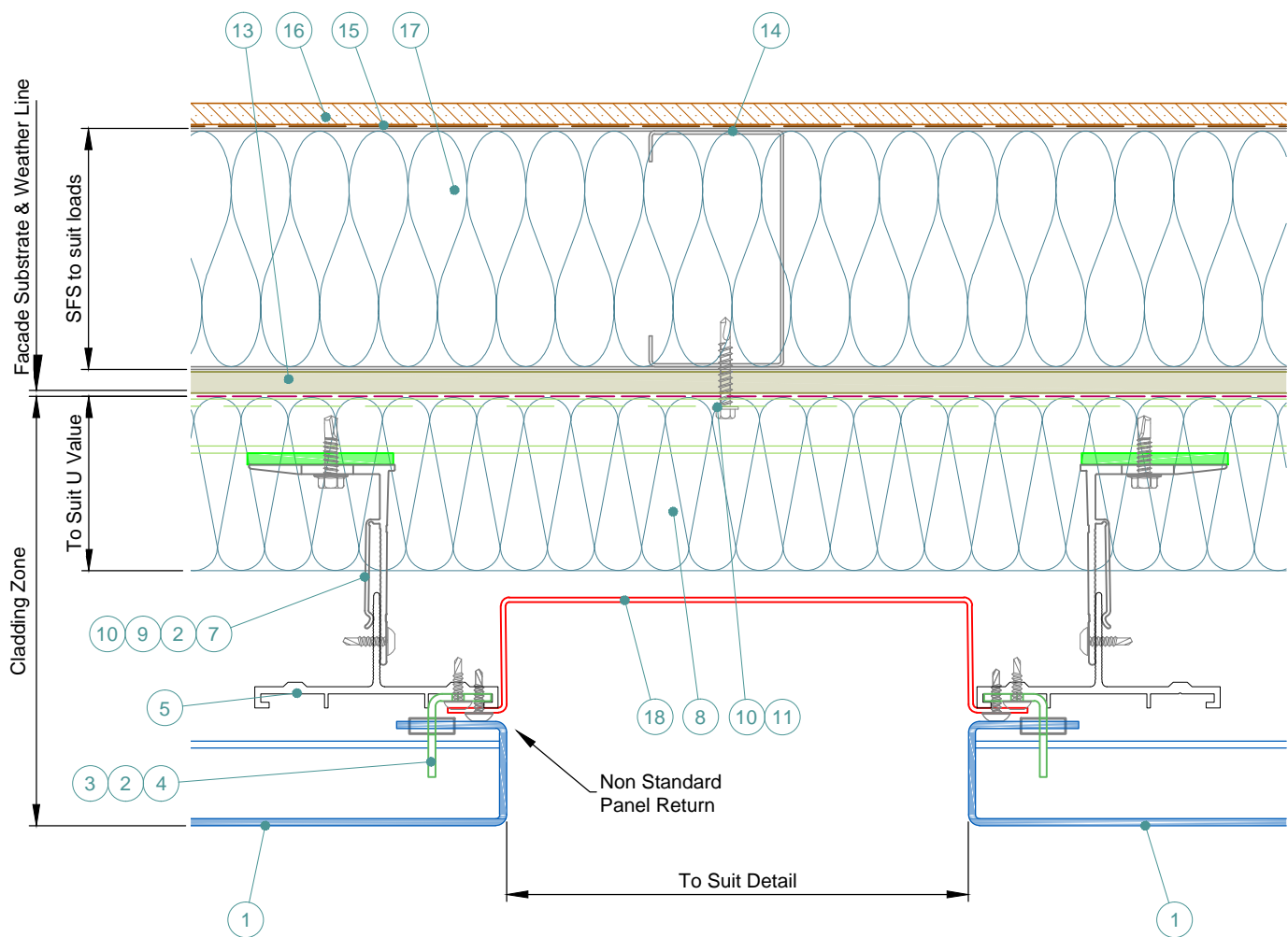
- 1 Optima LZ Panel. Finish to suit project.
- 2 Self Drill Fastener(Ejot JT4-ZT-4-4.8x19).
- 3 PVC Anti Rattle Clip
- 4 Hook Plate
- 5 Optima LZ Carrier Profile
- 6 Optional Colour Match Strip
- 7 Nvelope Handsfree Bkt - to suit zone & ctrs to suit loadings.
- 8 Insulation - thickness & type to suit specification. By Others.
- 9 Isolator.
- 10 Tek Fixing - type to suit substrate material. By Others.
- 11 Top Hat - material to suit span. By Others.
- 12 Breathable Membrane. By Others.
- 13 Cemeticious Board (or simiar), thickness to suit specification. By Others.
- 14 Insulated SIPS Panel. By Others.
- 15 V.C.L. - if required. By Others.
- 16 Internal Finish. By Others.
- 17 Insulation - If required. By Others.



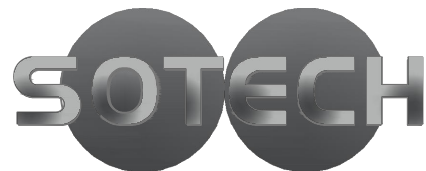
Sotech Ltd  
 2 Traynor Way  
 Whitehouse Business Park  
 Peterlee  
 County Durham  
 SR8 2RU  
 Tel: 0191 587 2287  
 Fax: 0191 518 0703  
 www.sotech-optima.co.uk

Title:  
 Optima LZ  
 External Corner To SIPS Panel

Drg No: LZ-13	Drawn By: DD	Date: 08.04.16
Scale: 1:4 @A4	Checked By: Sotech	Rev: A

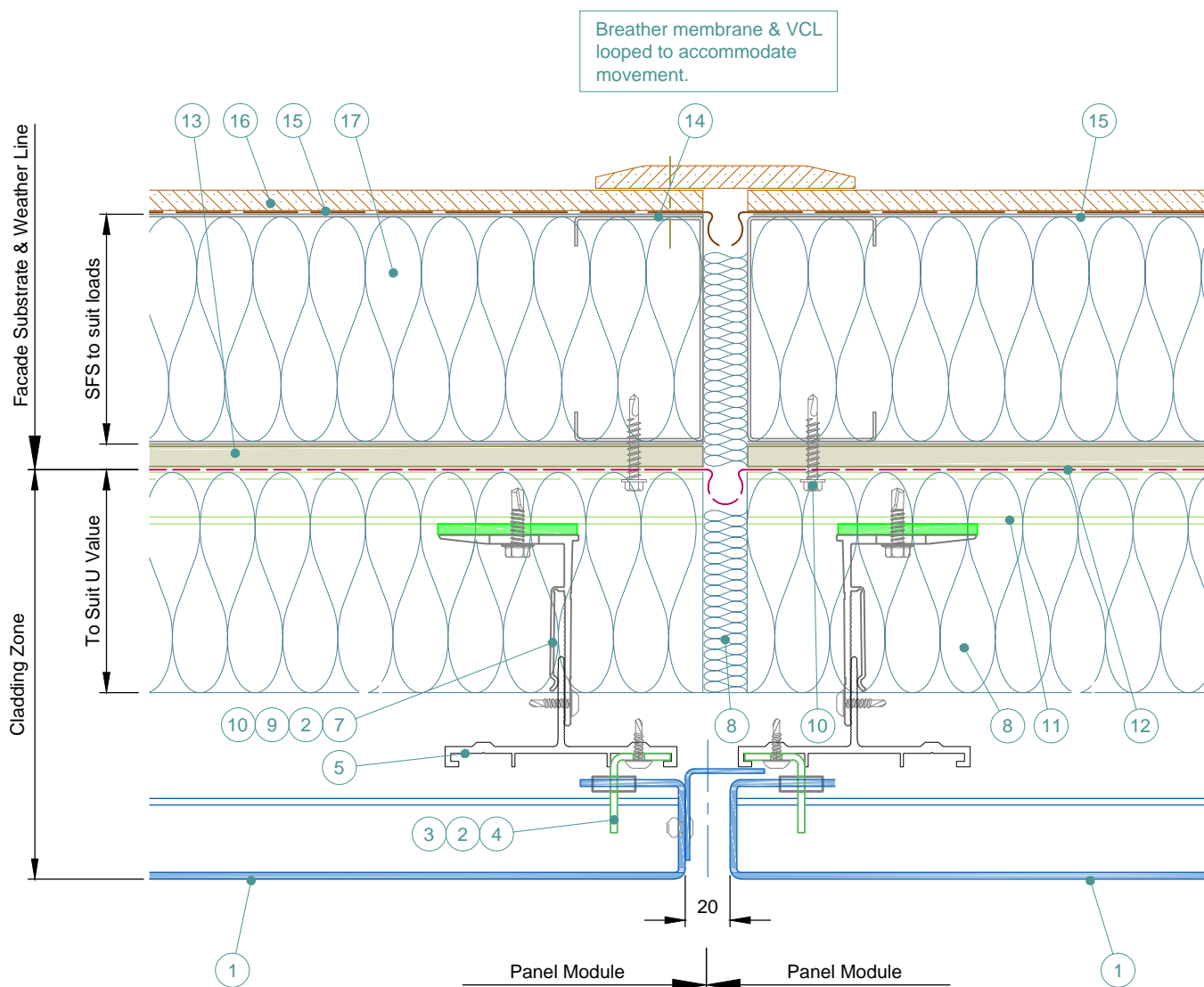


- 1 Optima LZ Panel. Finish to suit project.
- 2 Self Drill Fastener(Ejot JT4-ZT-4-4.8x19).
- 3 PVC Anti Rattle Clip
- 4 Hook Plate
- 5 Optima LZ Carrier Profile
- 6 Optional Colour Match Strip
- 7 Nvelope Handsfree Bkt - to suit zone & ctrs to suit loadings.
- 8 Insulation - thickness & type to suit specification. By Others.
- 9 Isolator.
- 10 Tek Fixing - type to suit substrate material. By Others.
- 11 Top Hat - material to suit span. By Others.
- 12 Breathable Membrane. By Others.
- 13 Cemeticious Board (or simiar), thickness to suit specification. By Others.
- 14 SFS Substrate - profile size & centres to suit loadings. By Others.
- 15 V.C.L. - if required. By Others.
- 16 Internal Finish. By Others.
- 17 Insulation - If required. By Others.
- 18 Aluminium Pressing. By Others.

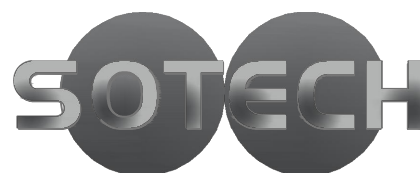


Sotech Ltd  
 2 Traynor Way  
 Whitehouse Business Park  
 Peterlee  
 County Durham  
 SR8 2RU  
 Tel: 0191 587 2287  
 Fax: 0191 518 0703  
 www.sotech-optima.co.uk

Title: Optima LZ Feature Channel Detail		
Drg No: LZ-14	Drawn By: DD	Date: 08.04.16
Scale: 1:3 @A4	Checked By: Sotech	Rev: A



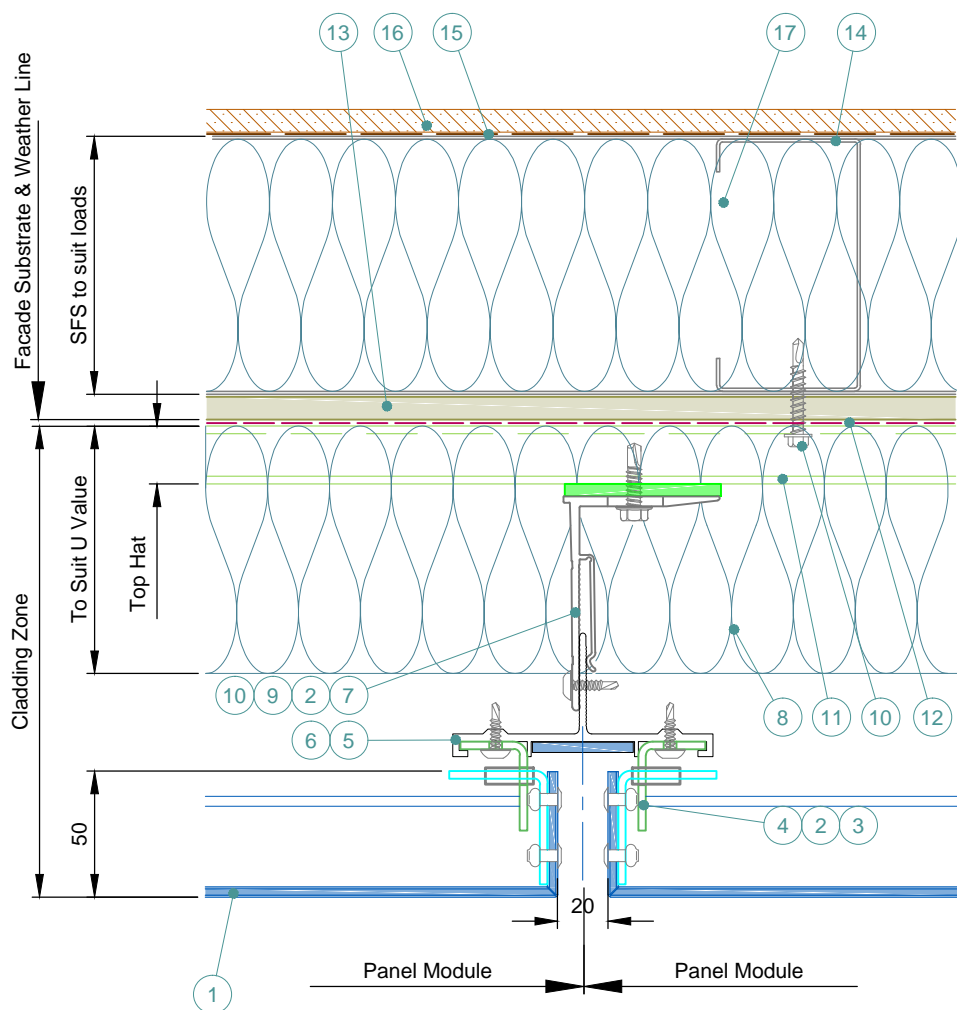
- 1 Optima LZ Panel. Finish to suit project.
- 2 Self Drill Fastener(Ejot JT4-ZT-4-4.8x19).
- 3 PVC Anti Rattle Clip
- 4 Hook Plate
- 5 Optima LZ Carrier Profile
- 6 Optional Colour Match Strip
- 7 Nvelope Handsfree Bkt - to suit zone & ctrs to suit loadings.
- 8 Insulation - thickness & type to suit specification. By Others.
- 9 Isolator.
- 10 Tek Fixing - type to suit substrate material. By Others.
- 11 Top Hat - material to suit span. By Others.
- 12 Breathable Membrane. By Others.
- 13 Cementitious Board (or similar), thickness to suit specification. By Others.
- 14 SFS Substrate - profile size & centres to suit loadings. By Others.
- 15 V.C.L. - if required. By Others.
- 16 Internal Finish. By Others.
- 17 Insulation - If required. By Others.
- 18 Aluminium Pressing. By Others.



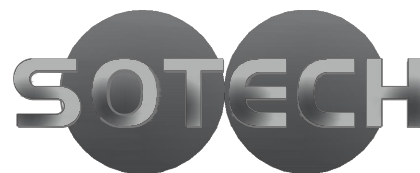
Sotech Ltd  
 2 Traynor Way  
 Whitehouse Business Park  
 Peterlee  
 County Durham  
 SR8 2RU  
 Tel: 0191 587 2287  
 Fax: 0191 518 0703  
 www.sotech-optima.co.uk

Title:  
 Optima LZ  
 Movement Joint Detail

Dwg No: LZ-15	Drawn By: DD	Date: 08.04.16
Scale: 1:3 @A4	Checked By: Sotech	Rev: A



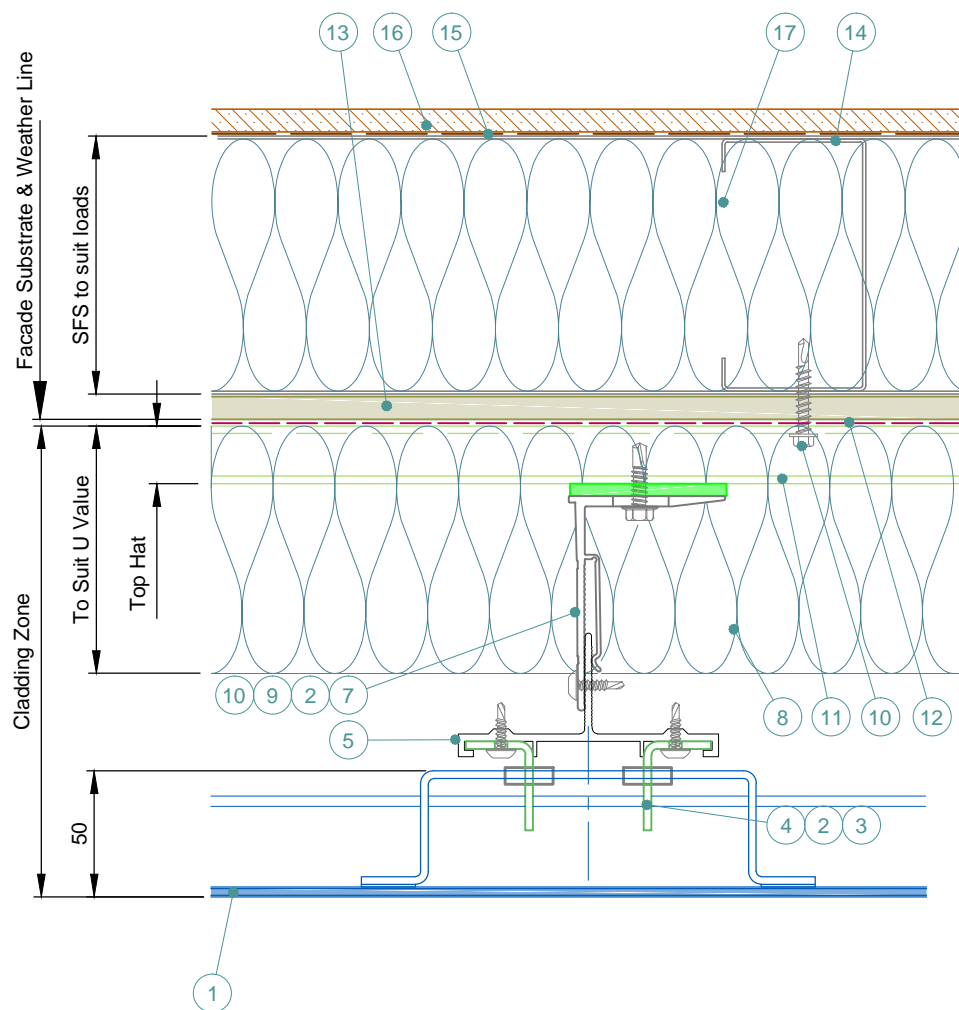
- 1 Optima LZ-ACM Panel. Finish to suit project.
- 2 Self Drill Fastener(Ejot JT4-ZT-4-4.8x19).
- 3 PVC Anti Rattle Clip
- 4 Hook Plate
- 5 Optima LZ-ACM Carrier Profile
- 6 Optional Colour Match Strip
- 7 Nvelope Handsfree Bkt - to suit zone & ctrs to suit loadings.
- 8 Insulation - thickness & type to suit specification. By Others.
- 9 Isolator.
- 10 Tek Fixing - type to suit substrate material. By Others.
- 11 Top Hat - material to suit span. By Others.
- 12 Breathable Membrane. By Others.
- 13 Cementitious Board (or similar), thickness to suit specification. By Others.
- 14 SFS Substrate - profile size & centres to suit loadings. By Others.
- 15 V.C.L. - if required. By Others.
- 16 Internal Finish. By Others.
- 17 Insulation - If required. By Others.



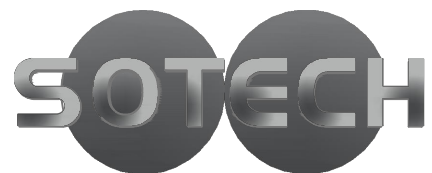
Sotech Ltd  
 2 Traynor Way  
 Whitehouse Business Park  
 Peterlee  
 County Durham  
 SR8 2RU  
 Tel: 0191 587 2287  
 Fax: 0191 518 0703  
 www.sotech-optima.co.uk

Title:  
 Optima LZ-ACM  
 Vertical Joint

Dwg No:	LZ-ACM-01	Drawn By:	DD	Date:	08.04.16
Scale:	1:3 @A4	Checked By:	Sotech	Rev:	A



- 1 Optima LZ-ACM Panel. Finish to suit project.
- 2 Self Drill Fastener(Ejot JT4-ZT-4-4.8x19).
- 3 PVC Anti Rattle Clip
- 4 Hook Plate
- 5 Optima LZ-ACM Carrier Profile
- 6 Optional Colour Match Strip
- 7 Nvelope Handsfree Bkt - to suit zone & ctrs to suit loadings.
- 8 Insulation - thickness & type to suit specification. By Others.
- 9 Isolator.
- 10 Tek Fixing - type to suit substrate material. By Others.
- 11 Top Hat - material to suit span. By Others.
- 12 Breathable Membrane. By Others.
- 13 Cemetitious Board (or simiar), thickness to suit specification. By Others.
- 14 SFS Substrate - profile size & centres to suit loadings. By Others.
- 15 V.C.L. - if required. By Others.
- 16 Internal Finish. By Others.
- 17 Insulation - If required. By Others.

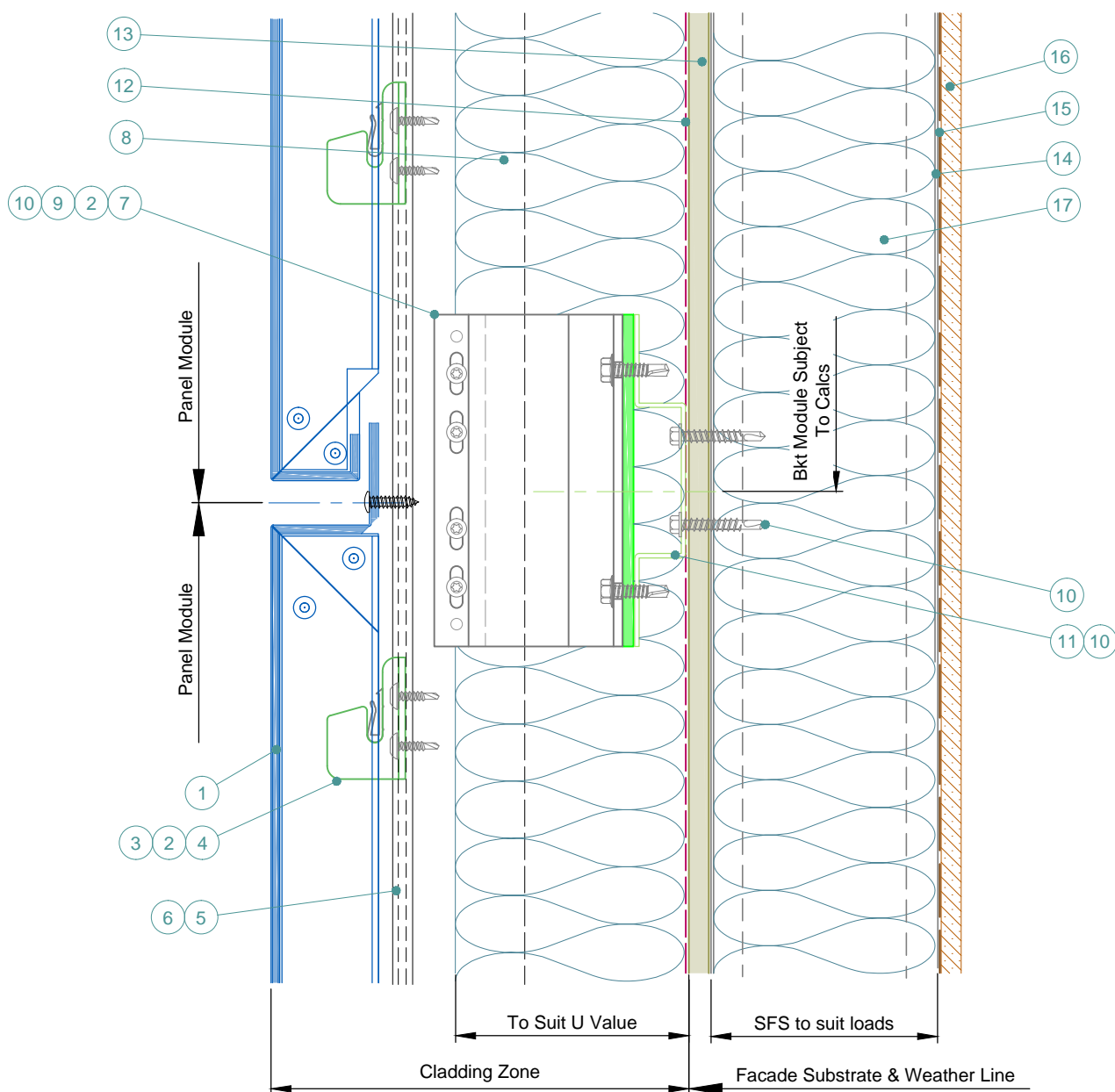


Sotech Ltd  
2 Traynor Way  
Whitehouse Business Park  
Peterlee  
County Durham  
SR8 2RU

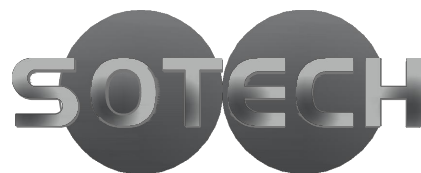
Tel: 0191 587 2287  
Fax: 0191 518 0703  
www.sotech-optima.co.uk

Title: Optima LZ-ACM  
Intermediate Support

Dwg No:	LZ-ACM-02	Drawn By:	DD	Date:	08.04.16
Scale:	1:3 @A4	Checked By:	Sotech	Rev:	A



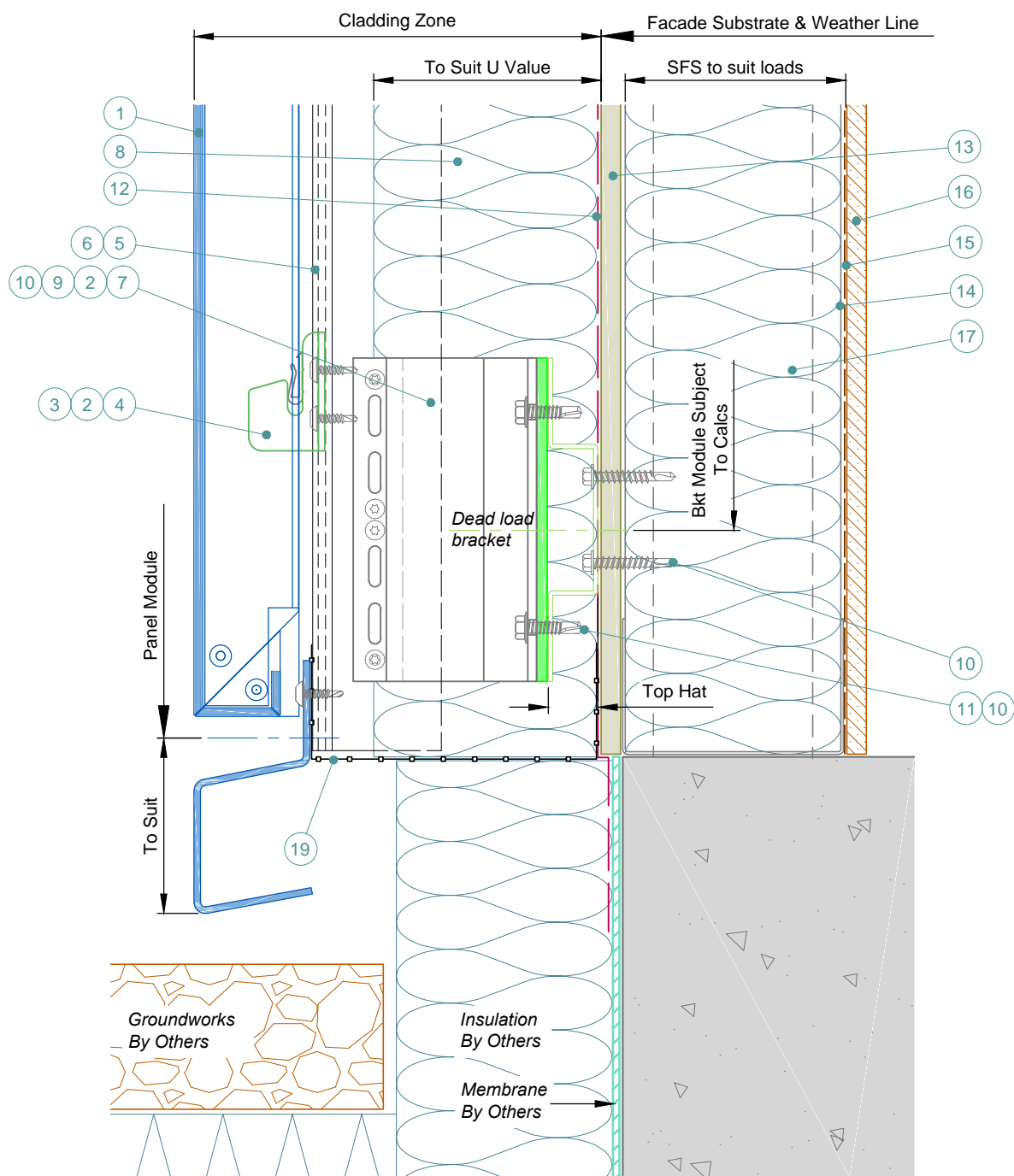
- 1 Optima LZ-ACM Panel. Finish to suit project.
- 2 Self Drill Fastener(Ejot JT4-ZT-4-4.8x19).
- 3 PVC Anti Rattle Clip
- 4 Hook Plate
- 5 Optima LZ-ACM Carrier Profile
- 6 Optional Colour Match Strip
- 7 Nvelope Handsfree Bkt - to suit zone & ctrs to suit loadings.
- 8 Insulation - thickness & type to suit specification. By Others.
- 9 Isolator.
- 10 Tek Fixing - type to suit substrate material. By Others.
- 11 Top Hat - material to suit span. By Others.
- 12 Breathable Membrane. By Others.
- 13 Cemetitious Board (or simiar), thickness to suit specification. By Others.
- 14 SFS Substrate - profile size & centres to suit loadings. By Others.
- 15 V.C.L. - if required. By Others.
- 16 Internal Finish. By Others.
- 17 Insulation - If required. By Others.



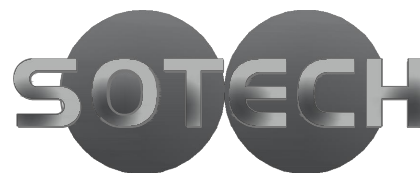
Sotech Ltd  
 2 Traynor Way  
 Whitehouse Business Park  
 Peterlee  
 County Durham  
 SR8 2RU  
 Tel: 0191 587 2287  
 Fax: 0191 518 0703  
 www.sotech-optima.co.uk

Title: Optima LZ-ACM  
 Horizontal Joint

Dwg No:	LZ-ACM-03	Drawn By:	DD	Date:	08.04.16
Scale:	1:3 @A4	Checked By:	Sotech	Rev:	A



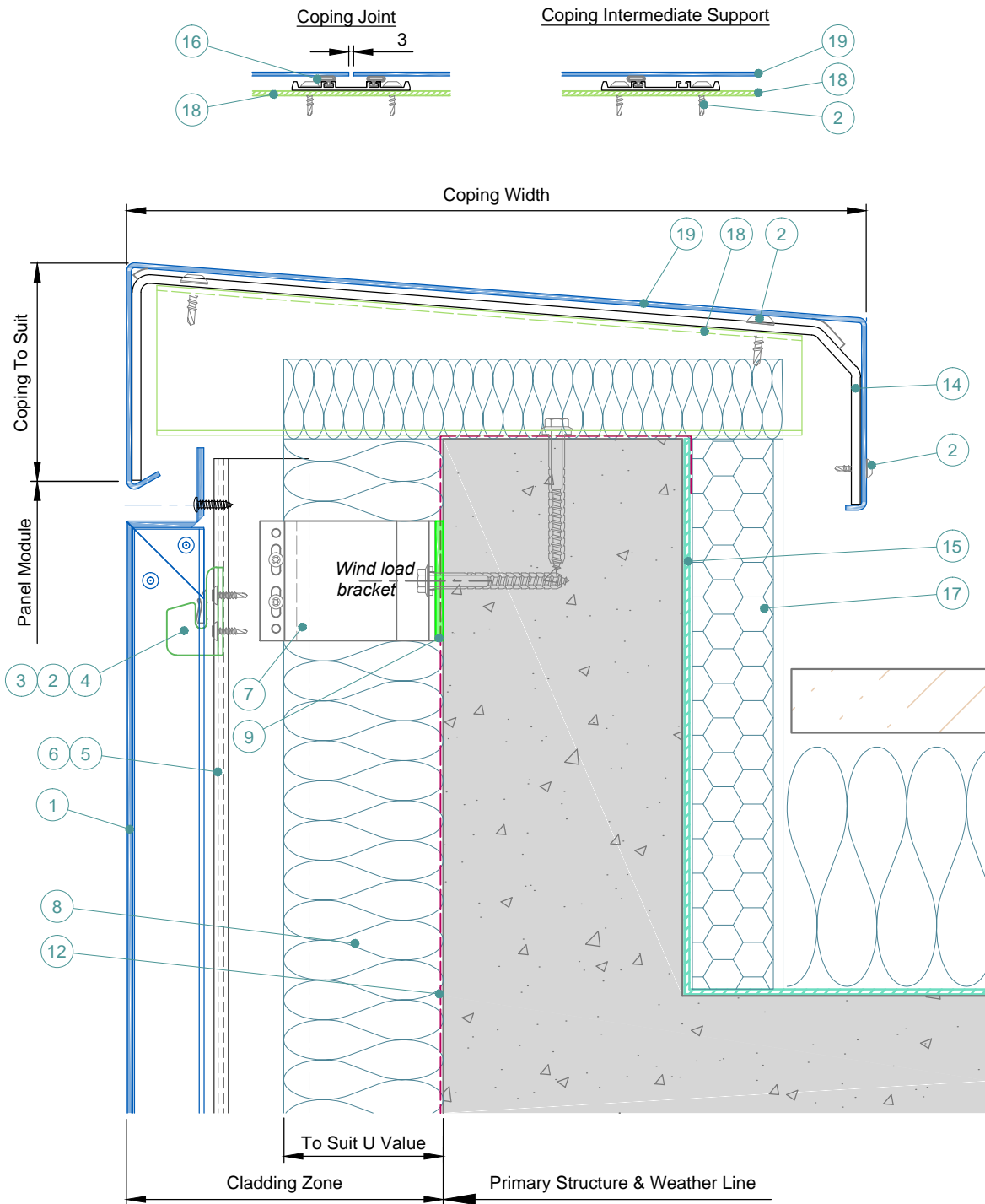
- 1 Optima LZ-ACM Panel. Finish to suit project.
- 2 Self Drill Fastener(Ejot JT4-ZT-4-4.8x19).
- 3 PVC Anti Rattle Clip
- 4 Hook Plate
- 5 Optima LZ-ACM Carrier Profile
- 6 Optional Colour Match Strip
- 7 Nvelope Handsfree Bkt - to suit zone & ctrs to suit loadings.
- 8 Insulation - thickness & type to suit specification. By Others.
- 9 Isolator.
- 10 Tek Fixing - type to suit substrate material. By Others.
- 11 Top Hat - material to suit span. By Others.
- 12 Breathable Membrane. By Others.
- 13 Cemeticitious Board (or simiar), thickness to suit specification. By Others.
- 14 SFS Substrate - profile size & centres to suit loadings. By Others.
- 15 V.C.L. - if required. By Others.
- 16 Internal Finish. By Others.
- 17 Insulation - If required. By Others.
- 18 Deflector Pressing.
- 19 Insect Mesh. By Others.



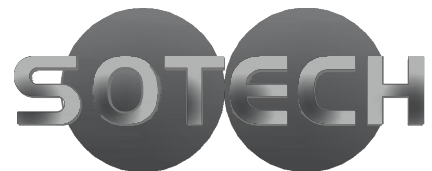
Sotech Ltd  
 2 Traynor Way  
 Whitehouse Business Park  
 Peterlee  
 County Durham  
 SR8 2RU  
 Tel: 0191 587 2287  
 Fax: 0191 518 0703  
 www.sotech-optima.co.uk

Title:  
 Optima LZ-ACM  
 Base Detail

Drg No:	LZ-ACM-04	Drawn By:	DD	Date:	08.04.16
Scale:	1:3 @A4	Checked By:	Sotech	Rev:	A



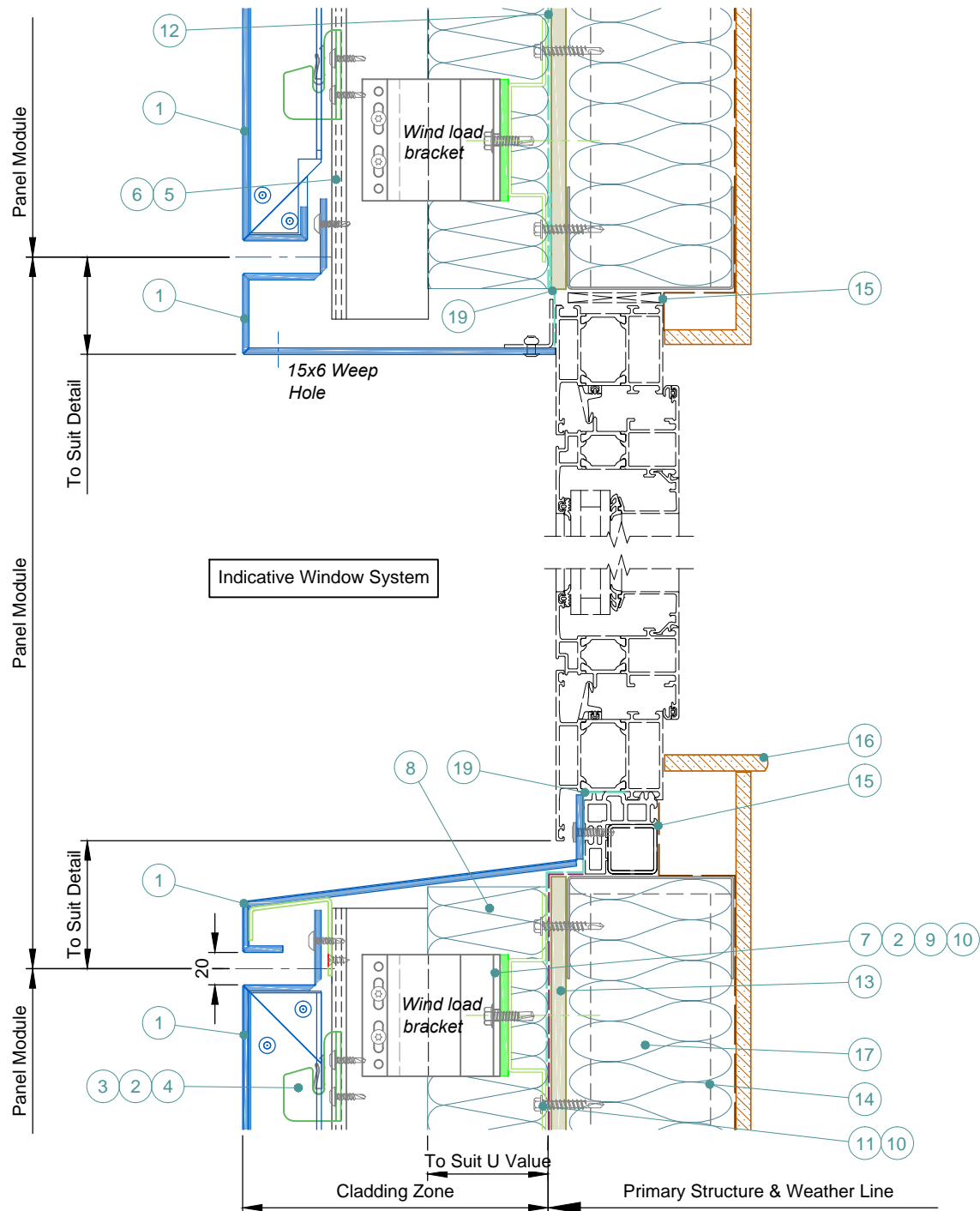
- 1 Optima LZ-ACM Panel. Finish to suit project.
- 2 Self Drill Fastener(Ejot JT4-ZT-4-4.8x19).
- 3 PVC Anti Rattle Clip
- 4 Hook Plate
- 5 Optima LZ-ACM Carrier Profile
- 6 Optional Colour Match Strip
- 7 Nvelope Handsfree Bkt - to suit zone & ctrs to suit loadings.
- 8 Insulation - thickness & type to suit specification. By Others.
- 9 Isolator.
- 10 Tek Fixing - type to suit substrate material. By Others.
- 11 Top Hat - material to suit span. By Others.
- 12 Breathable Membrane. By Others.
- 13 Cementitious Board (or similar), thickness to suit specification. By Others.
- 14 Extruded Carrier Profile With Gasket - centres to suit loads.
- 15 Membrane. By Others.
- 16 Gasket.
- 17 Insulation - If required. By Others.
- 18 Support Top Hat - thickness and material to suit loadings. By Others.
- 19 Aluminium Pressing - thickness to suit.



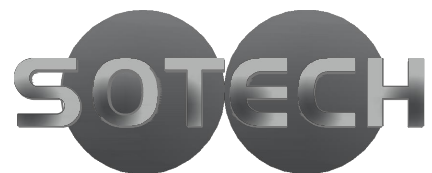
Sotech Ltd  
 2 Traynor Way  
 Whitehouse Business Park  
 Peterlee  
 County Durham  
 SR8 2RU  
 Tel: 0191 587 2287  
 Fax: 0191 518 0703  
 www.sotech-optima.co.uk

Title: Optima LZ-ACM  
 Coping Detail

Dwg No:	LZ-ACM-05	Drawn By:	DD	Date:	08.04.16
Scale:	1:3 @A4	Checked By:	Sotech	Rev:	A



- 1 Optima LZ-ACM Panel. Finish to suit project.
- 2 Self Drill Fastener(Ejot JT4-ZT-4-4.8x19).
- 3 PVC Anti Rattle Clip
- 4 Hook Plate
- 5 Optima LZ-ACM Carrier Profile
- 6 Optional Colour Match Strip
- 7 Nvelope Handsfree Bkt - to suit zone & ctrs to suit loadings.
- 8 Insulation - thickness & type to suit specification. By Others.
- 9 Isolator.
- 10 Tek Fixing - type to suit substrate material. By Others.
- 11 Top Hat - material to suit span. By Others.
- 12 Breathable Membrane. By Others.
- 13 Cemetitious Board (or simiar), thickness to suit specification. By Others.
- 14 SFS Substrate - profile size & centres to suit loadings. By Others.
- 15 V.C.L. - if required. By Others.
- 16 Internal Finish. By Others.
- 17 Insulation - If required. By Others.
- 18 Support Bracket - thickness and material to suit loadings. By Others.
- 19 EPDM or similar. By Others.

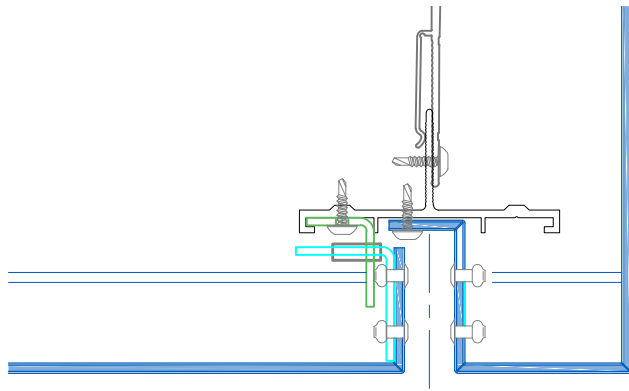


Sotech Ltd  
 2 Traynor Way  
 Whitehouse Business Park  
 Peterlee  
 County Durham  
 SR8 2RU

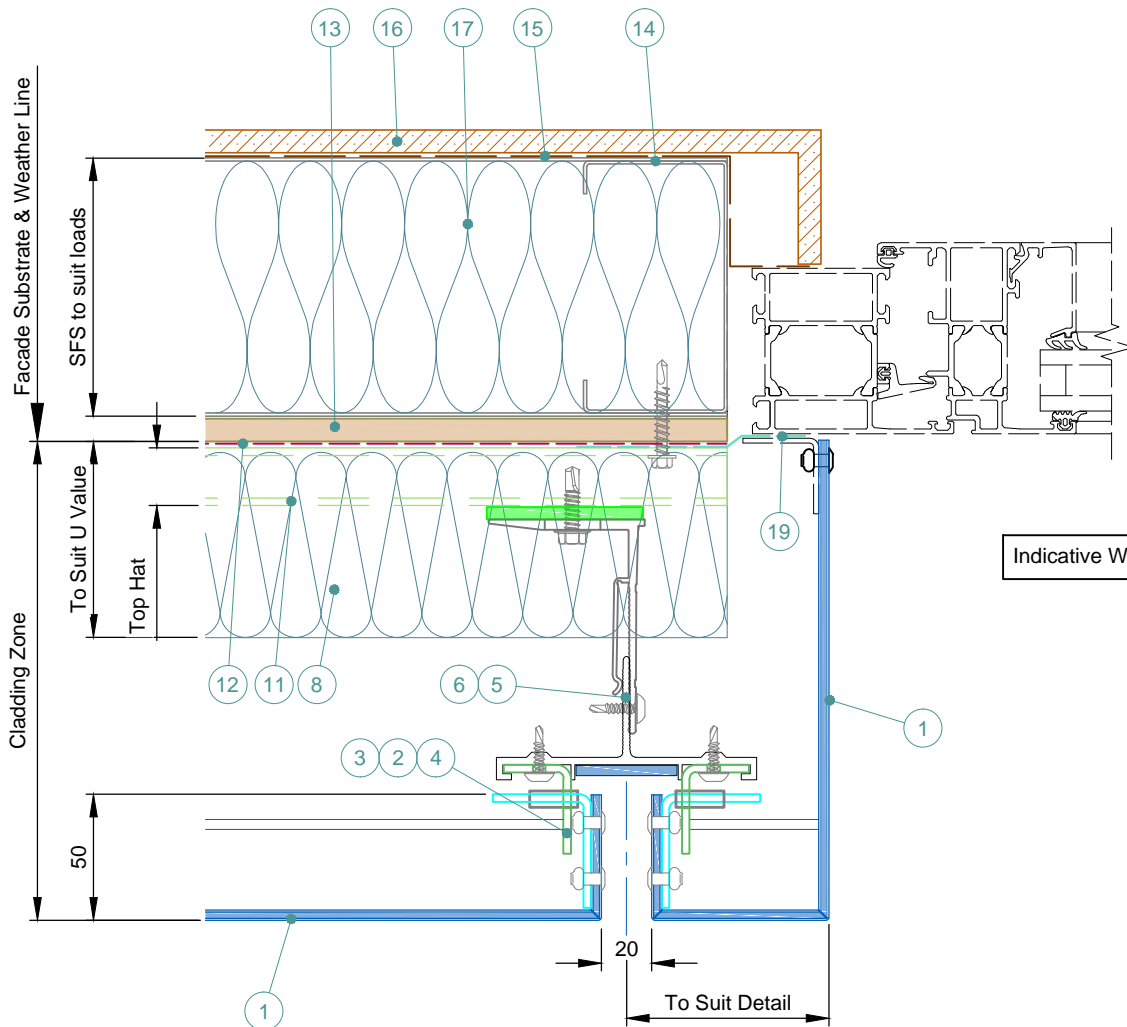
Tel: 0191 587 2287  
 Fax: 0191 518 0703  
 www.sotech-optima.co.uk

Title: Optima LZ-ACM  
 Vertical Window Interface

Dwg No:	LZ-ACM-06	Drawn By:	DD	Date:	08.04.16
Scale:	1:3 @A4	Checked By:	Sotech	Rev:	A

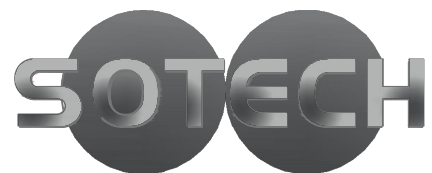


Flashing Fixing Option



Indicative Window System

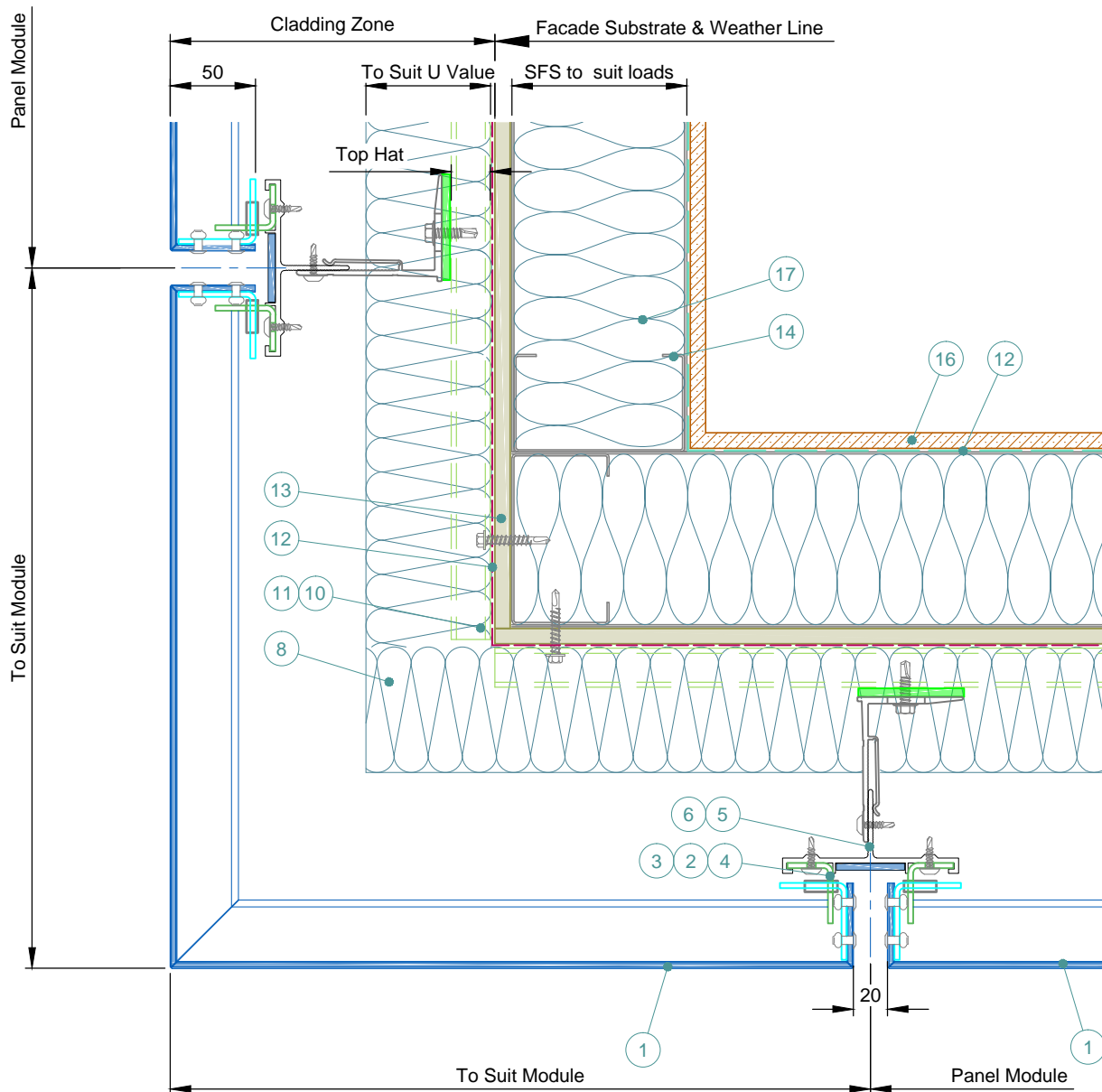
- 1 Optima LZ-ACM Panel. Finish to suit project.
- 2 Self Drill Fastener(Ejot JT4-ZT-4-4.8x19).
- 3 PVC Anti Rattle Clip
- 4 Hook Plate
- 5 Optima LZ-ACM Carrier Profile
- 6 Optional Colour Match Strip
- 7 Nvelope Handsfree Bkt - to suit zone & ctrs to suit loadings.
- 8 Insulation - thickness & type to suit specification. By Others.
- 9 Isolator.
- 10 Tek Fixing - type to suit substrate material. By Others.
- 11 Top Hat - material to suit span. By Others.
- 12 Breathable Membrane. By Others.
- 13 Cemeticious Board (or simiar), thickness to suit specification. By Others.
- 14 SFS Substrate - profile size & centres to suit loadings. By Others.
- 15 V.C.L. - if required. By Others.
- 16 Internal Finish. By Others.
- 17 Insulation - If required. By Others.
- 18 Support Bracket - thickness and material to suit loadings. By Others.
- 19 EPDM or similar. By Others.



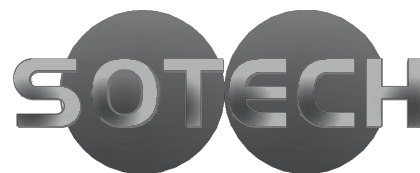
Sotech Ltd  
2 Traynor Way  
Whitehouse Business Park  
Peterlee  
County Durham  
SR8 2RU  
Tel: 0191 587 2287  
Fax: 0191 518 0703  
www.sotech-optima.co.uk

Title: Optima LZ-ACM  
Horizontal Window Interface

Drg No:	LZ-ACM-07	Drawn By:	DD	Date:	08.04.16
Scale:	1:3 @A4	Checked By:	Sotech	Rev:	A



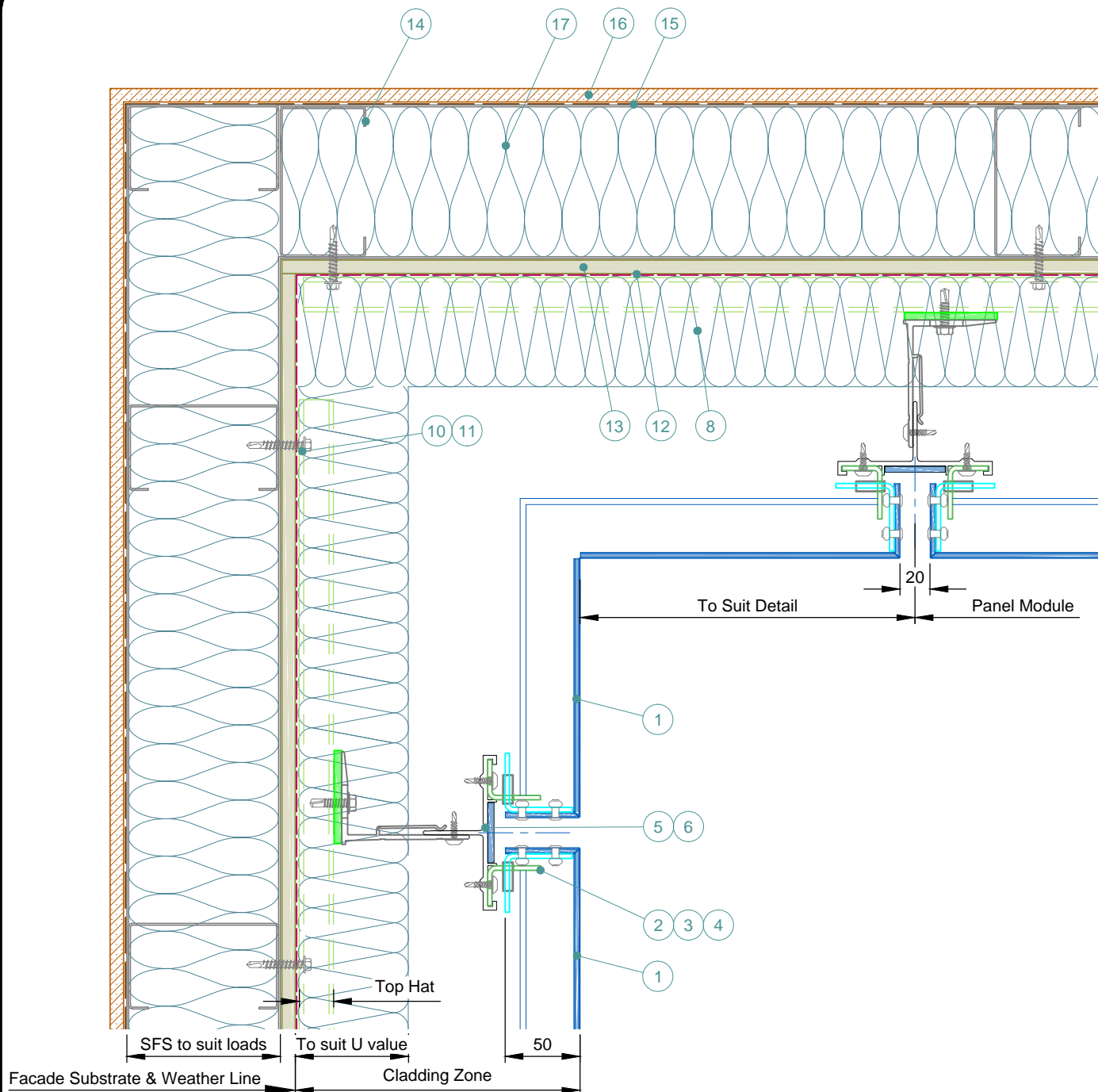
- 1 Optima LZ-ACM Panel. Finish to suit project.
- 2 Self Drill Fastener(Ejot JT4-ZT-4-4.8x19).
- 3 PVC Anti Rattle Clip
- 4 Hook Plate
- 5 Optima LZ-ACM Carrier Profile
- 6 Optional Colour Match Strip
- 7 Nvelope Handsfree Bkt - to suit zone & ctrs to suit loadings.
- 8 Insulation - thickness & type to suit specification. By Others.
- 9 Isolator.
- 10 Tek Fixing - type to suit substrate material. By Others.
- 11 Top Hat - material to suit span. By Others.
- 12 Breathable Membrane. By Others.
- 13 Cemeticious Board (or simiar), thickness to suit specification. By Others.
- 14 SFS Substrate - profile size & centres to suit loadings. By Others.
- 15 V.C.L. - if required. By Others.
- 16 Internal Finish. By Others.
- 17 Insulation - If required. By Others.



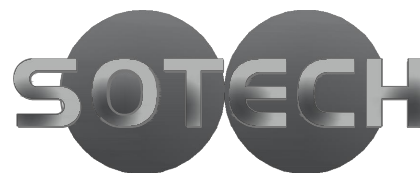
Sotech Ltd  
 2 Traynor Way  
 Whitehouse Business Park  
 Peterlee  
 County Durham  
 SR8 2RU  
 Tel: 0191 587 2287  
 Fax: 0191 518 0703  
 www.sotech-optima.co.uk

Title:  
 Optima LZ-ACM  
 External Corner

Dwg No: LZ-ACM-08	Drawn By: DD	Date: 08.04.16
Scale: 1:3 @A4	Checked By: Sotech	Rev: A

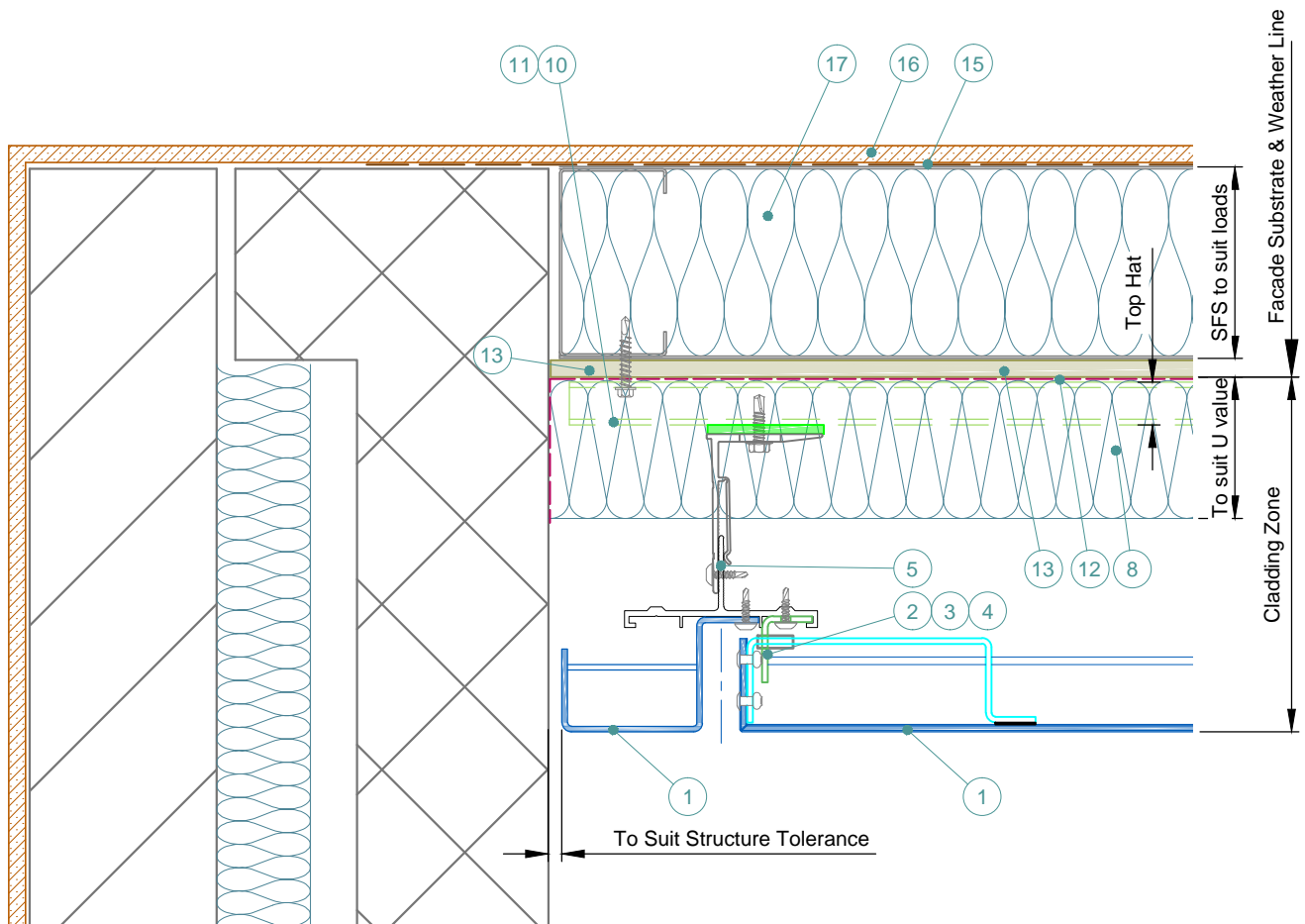


- 1 Optima LZ-ACM Panel. Finish to suit project.
- 2 Self Drill Fastener(Ejot JT4-ZT-4-4.8x19).
- 3 PVC Anti Rattle Clip
- 4 Hook Plate
- 5 Optima LZ-ACM Carrier Profile
- 6 Optional Colour Match Strip
- 7 Nvelope Handsfree Bkt - to suit zone & ctrs to suit loadings.
- 8 Insulation - thickness & type to suit specification. By Others.
- 9 Isolator.
- 10 Tek Fixing - type to suit substrate material. By Others.
- 11 Top Hat - material to suit span. By Others.
- 12 Breathable Membrane. By Others.
- 13 Cemeticious Board (or simiar), thickness to suit specification. By Others.
- 14 SFS Substrate - profile size & centres to suit loadings. By Others.
- 15 V.C.L. - if required. By Others.
- 16 Internal Finish. By Others.
- 17 Insulation - If required. By Others.

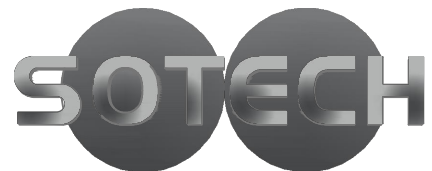


Sotech Ltd  
 2 Traynor Way  
 Whitehouse Business Park  
 Peterlee  
 County Durham  
 SR8 2RU  
 Tel: 0191 587 2287  
 Fax: 0191 518 0703  
 www.sotech-optima.co.uk

Title: Optima LZ-ACM Internal Corner		
Drg No: LZ-ACM-09	Drawn By: DD	Date: 08.04.16
Scale: 1:4 @A4	Checked By: Sotech	Rev: A



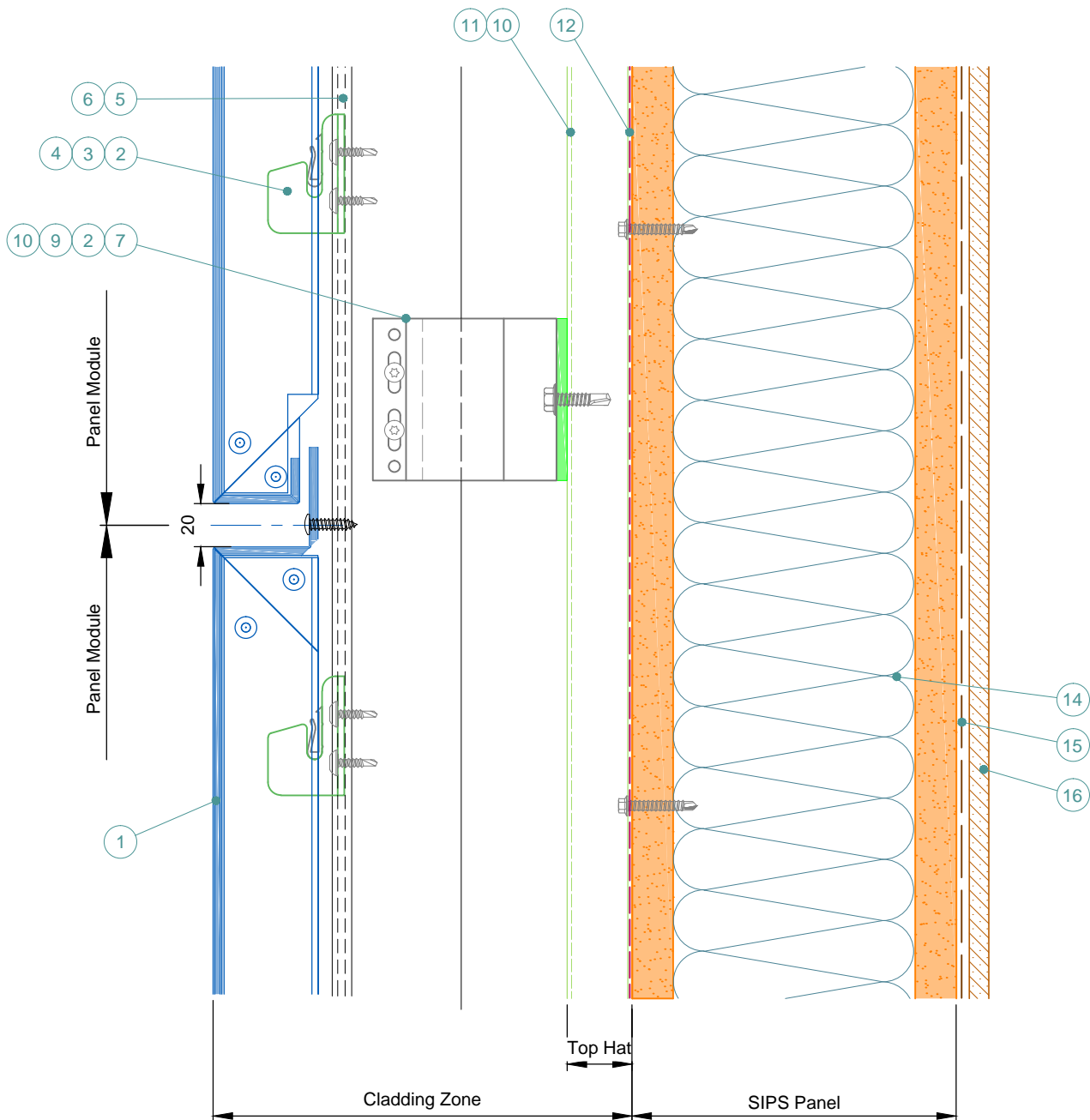
- 1 Optima LZ-ACM Panel. Finish to suit project.
- 2 Self Drill Fastener(Ejot JT4-ZT-4-4.8x19).
- 3 PVC Anti Rattle Clip
- 4 Hook Plate
- 5 Optima LZ-ACM Carrier Profile
- 6 Optional Colour Match Strip
- 7 Nvelope Handsfree Bkt - to suit zone & ctrs to suit loadings.
- 8 Insulation - thickness & type to suit specification. By Others.
- 9 Isolator.
- 10 Tek Fixing - type to suit substrate material. By Others.
- 11 Top Hat - material to suit span. By Others.
- 12 Breathable Membrane. By Others.
- 13 Cementitious Board (or simiar), thickness to suit specification. By Others.
- 14 SFS Substrate - profile size & centres to suit loadings. By Others.
- 15 V.C.L. - if required. By Others.
- 16 Internal Finish. By Others.
- 17 Insulation - If required. By Others.



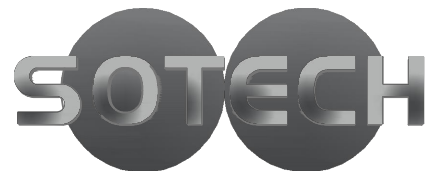
Sotech Ltd  
 2 Traynor Way  
 Whitehouse Business Park  
 Peterlee  
 County Durham  
 SR8 2RU  
 Tel: 0191 587 2287  
 Fax: 0191 518 0703  
 www.sotech-optima.co.uk

Title: Optima LZ-ACM  
 Facade Abutment Detail

Dwg No:	LZ-ACM-10	Drawn By:	DD	Date:	08.04.16
Scale:	1:4 @A4	Checked By:	Sotech	Rev:	A



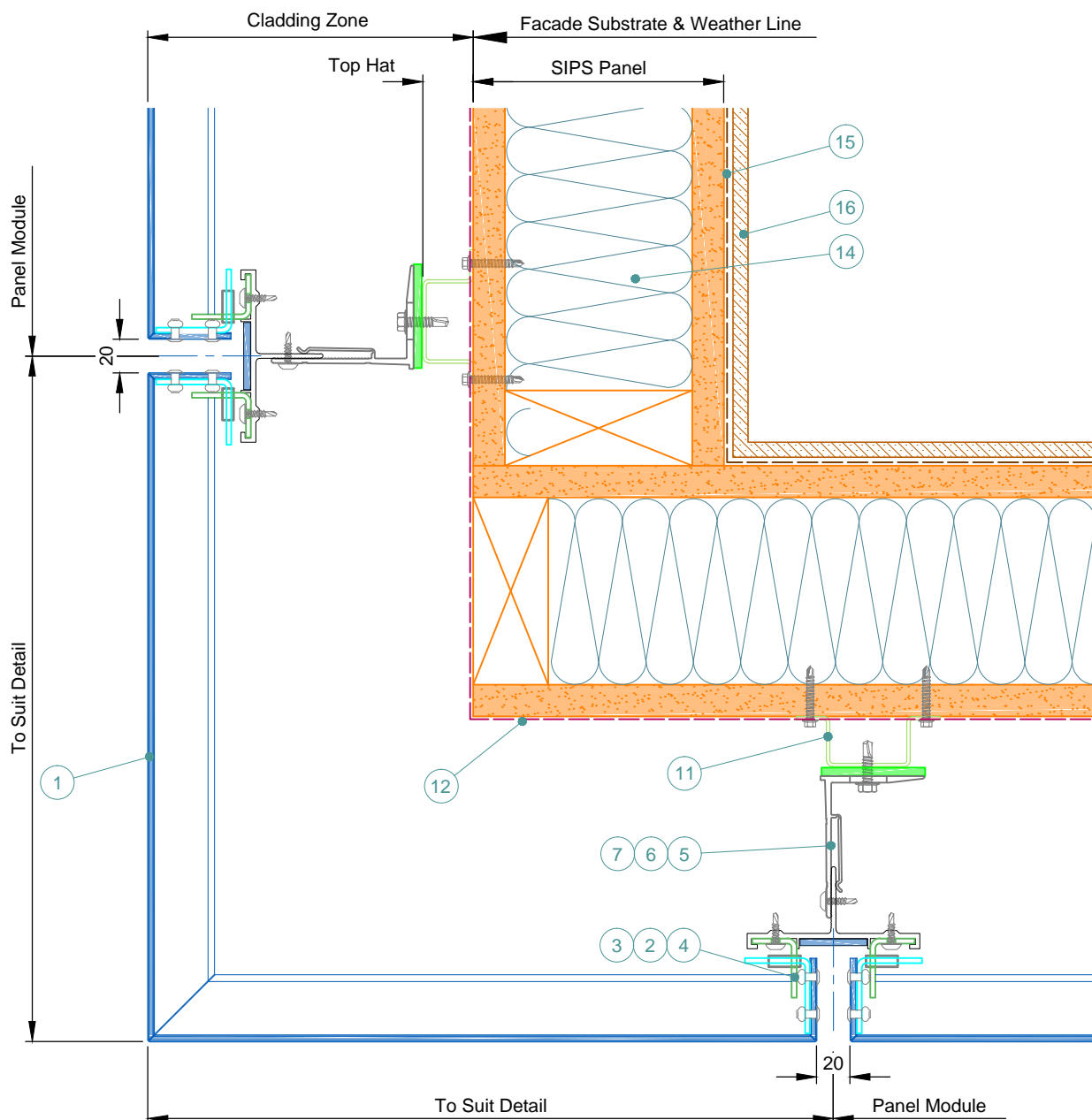
- 1 Optima LZ-ACM Panel. Finish to suit project.
- 2 Self Drill Fastener(Ejot JT4-ZT-4-4.8x19).
- 3 PVC Anti Rattle Clip
- 4 Hook Plate
- 5 Optima LZ-ACM Carrier Profile
- 6 Optional Colour Match Strip
- 7 Nvelope Handsfree Bkt - to suit zone & ctrs to suit loadings.
- 8 Insulation - thickness & type to suit specification. By Others.
- 9 Isolator.
- 10 Tek Fixing - type to suit substrate material. By Others.
- 11 Top Hat - material to suit span. By Others.
- 12 Breathable Membrane. By Others.
- 13 Cemeticious Board (or simiar), thickness to suit specification. By Others.
- 14 Insulated SIPS Panel. By Others.
- 15 V.C.L. - if required. By Others.
- 16 Internal Finish. By Others.
- 17 Insulation - If required. By Others.



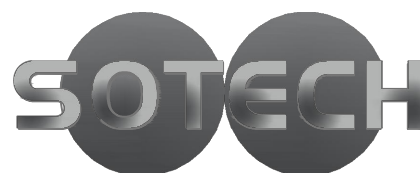
Sotech Ltd  
 2 Traynor Way  
 Whitehouse Business Park  
 Peterlee  
 County Durham  
 SR8 2RU  
 Tel: 0191 587 2287  
 Fax: 0191 518 0703  
 www.sotech-optima.co.uk

Title: Optima LZ-ACM  
 Horizontal Joint With SIPS Panel

Dwg No:	LZ-ACM-11	Drawn By:	DD	Date:	08.04.16
Scale:	1:3 @A4	Checked By:	Sotech	Rev:	A



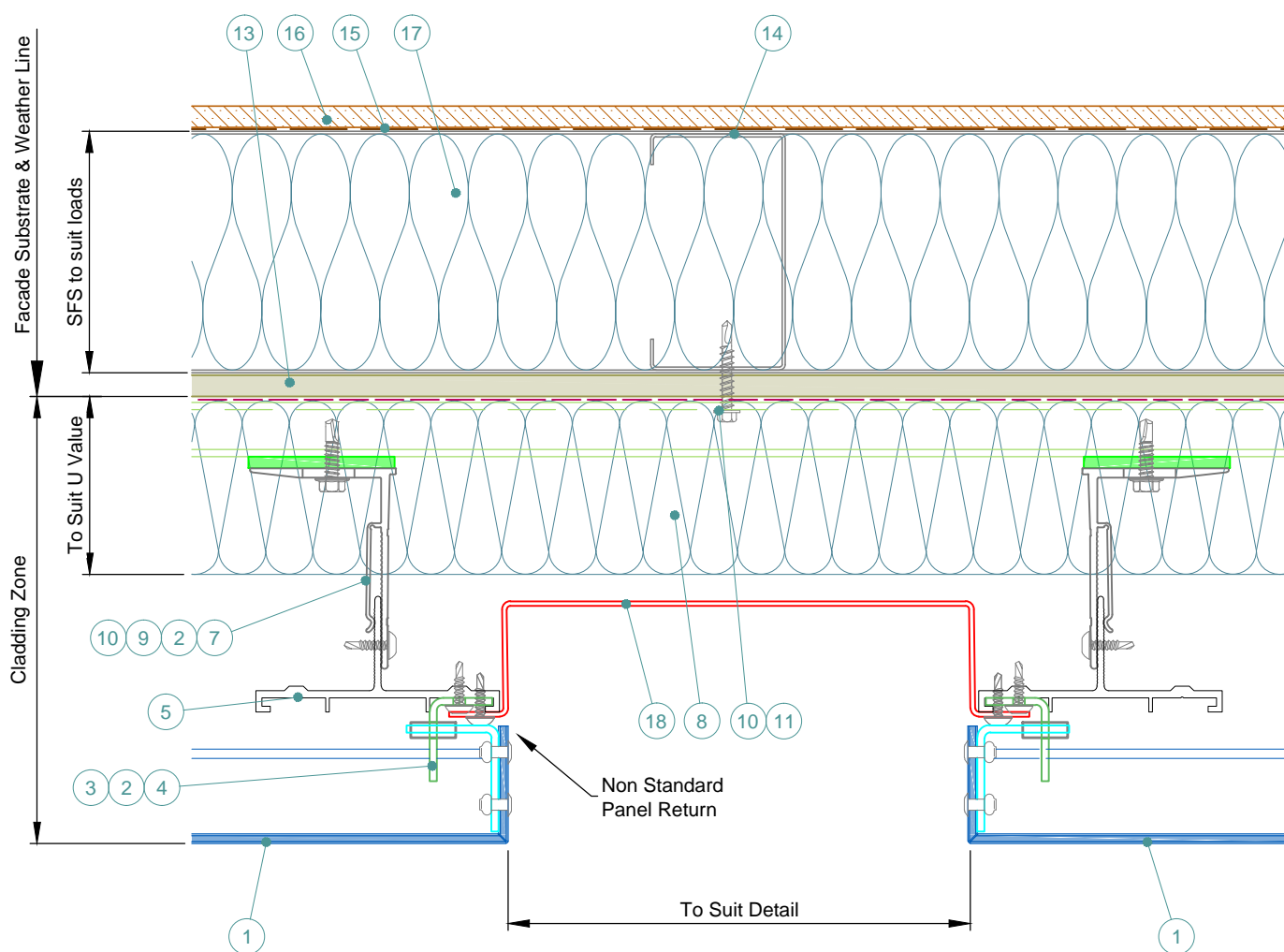
- 1 Optima LZ-ACM Panel. Finish to suit project.
- 2 Self Drill Fastener(Ejot JT4-ZT-4-4.8x19).
- 3 PVC Anti Rattle Clip
- 4 Hook Plate
- 5 Optima LZ-ACM Carrier Profile
- 6 Optional Colour Match Strip
- 7 Nvelope Handsfree Bkt - to suit zone & ctrs to suit loadings.
- 8 Insulation - thickness & type to suit specification. By Others.
- 9 Isolator.
- 10 Tek Fixing - type to suit substrate material. By Others.
- 11 Top Hat - material to suit span. By Others.
- 12 Breathable Membrane. By Others.
- 13 Cementitious Board (or similar), thickness to suit specification. By Others.
- 14 Insulated SIPS Panel. By Others.
- 15 V.C.L. - if required. By Others.
- 16 Internal Finish. By Others.
- 17 Insulation - If required. By Others.



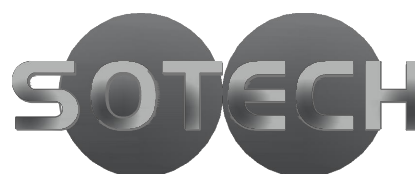
Sotech Ltd  
 2 Traynor Way  
 Whitehouse Business Park  
 Peterlee  
 County Durham  
 SR8 2RU  
 Tel: 0191 587 2287  
 Fax: 0191 518 0703  
 www.sotech-optima.co.uk

Title:  
 Optima LZ-ACM  
 External Corner On SIPS Panels

Drg No:	LZ-ACM-12	Drawn By:	DD	Date:	08.04.16
Scale:	1:4 @A4	Checked By:	Sotech	Rev:	A



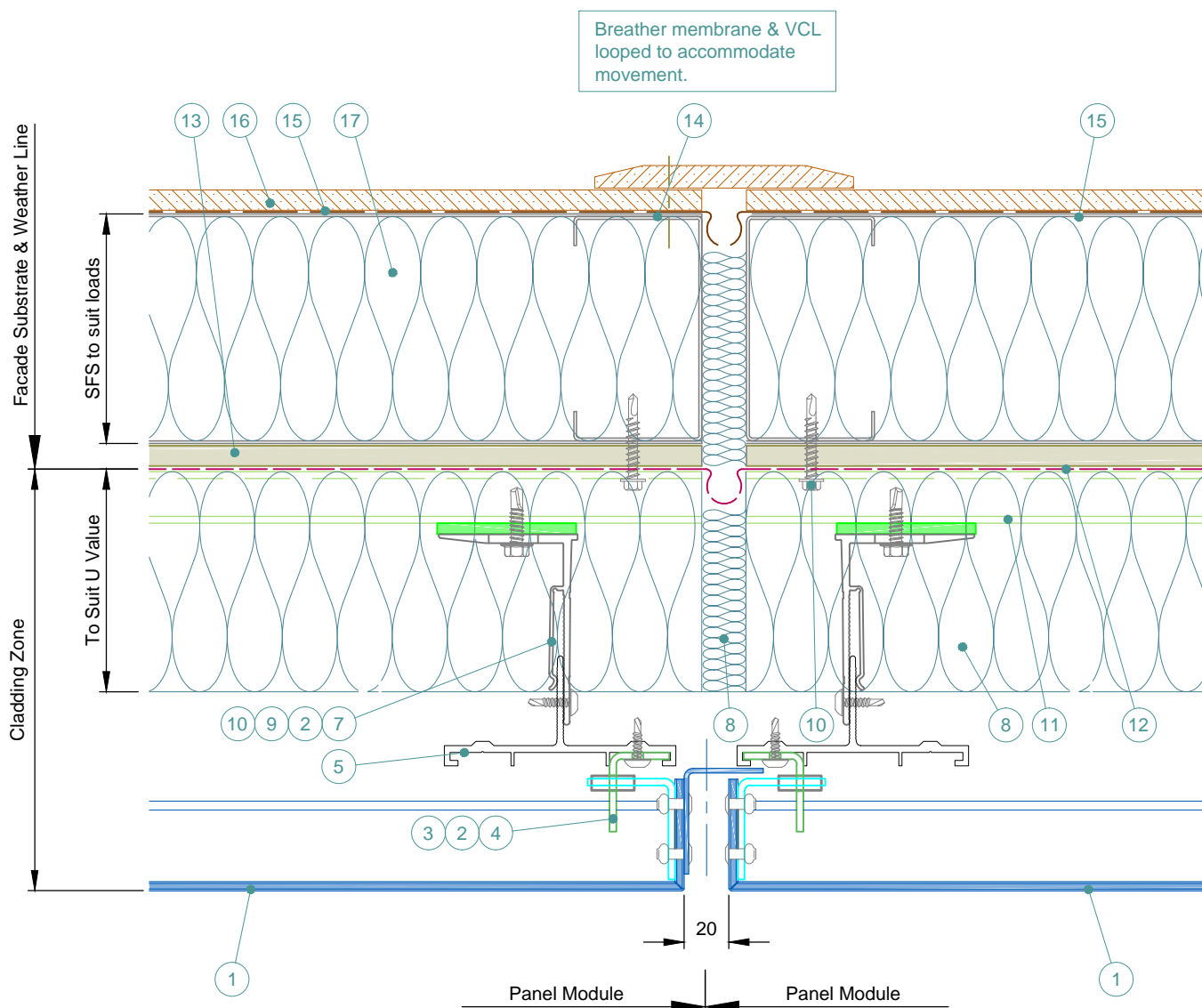
- 1 Optima LZ-ACM Panel. Finish to suit project.
- 2 Self Drill Fastener(Ejot JT4-ZT-4-4.8x19).
- 3 PVC Anti Rattle Clip
- 4 Hook Plate
- 5 Optima LZ-ACM Carrier Profile
- 6 Optional Colour Match Strip
- 7 Nvelope Handsfree Bkt - to suit zone & ctrs to suit loadings.
- 8 Insulation - thickness & type to suit specification. By Others.
- 9 Isolator.
- 10 Tek Fixing - type to suit substrate material. By Others.
- 11 Top Hat - material to suit span. By Others.
- 12 Breathable Membrane. By Others.
- 13 Cemeticious Board (or simiar), thickness to suit specification. By Others.
- 14 SFS Substrate - profile size & centres to suit loadings. By Others.
- 15 V.C.L. - if required. By Others.
- 16 Internal Finish. By Others.
- 17 Insulation - If required. By Others.
- 18 Aluminium Pressing. By Others.



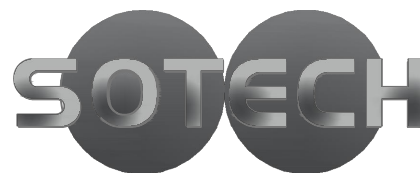
Sotech Ltd  
 2 Traynor Way  
 Whitehouse Business Park  
 Peterlee  
 County Durham  
 SR8 2RU  
 Tel: 0191 587 2287  
 Fax: 0191 518 0703  
 www.sotech-optima.co.uk

Title: Optima LZ-ACM  
 Feature Channel Detail

Dwg No:	LZ-ACM-13	Drawn By:	DD	Date:	08.04.16
Scale:	1:3 @A4	Checked By:	Sotech	Rev:	A



- 1 Optima LZ-ACM Panel. Finish to suit project.
- 2 Self Drill Fastener(Ejot JT4-ZT-4-4.8x19).
- 3 PVC Anti Rattle Clip
- 4 Hook Plate
- 5 Optima LZ-ACM Carrier Profile
- 6 Optional Colour Match Strip
- 7 Nvelope Handsfree Bkt - to suit zone & ctrs to suit loadings.
- 8 Insulation - thickness & type to suit specification. By Others.
- 9 Isolator.
- 10 Tek Fixing - type to suit substrate material. By Others.
- 11 Top Hat - material to suit span. By Others.
- 12 Breathable Membrane. By Others.
- 13 Cementitious Board (or similar), thickness to suit specification. By Others.
- 14 SFS Substrate - profile size & centres to suit loadings. By Others.
- 15 V.C.L. - if required. By Others.
- 16 Internal Finish. By Others.
- 17 Insulation - If required. By Others.
- 18 Aluminium Pressing. By Others.



Sotech Ltd  
 2 Traynor Way  
 Whitehouse Business Park  
 Peterlee  
 County Durham  
 SR8 2RU  
 Tel: 0191 587 2287  
 Fax: 0191 518 0703  
 www.sotech-optima.co.uk

Title: Optima LZ-ACM Movement Joint Detail		
Dwg No: LZ-ACM-14	Drawn By: DD	Date: 08.04.16
Scale: 1:3 @A4	Checked By: Sotech	Rev: A