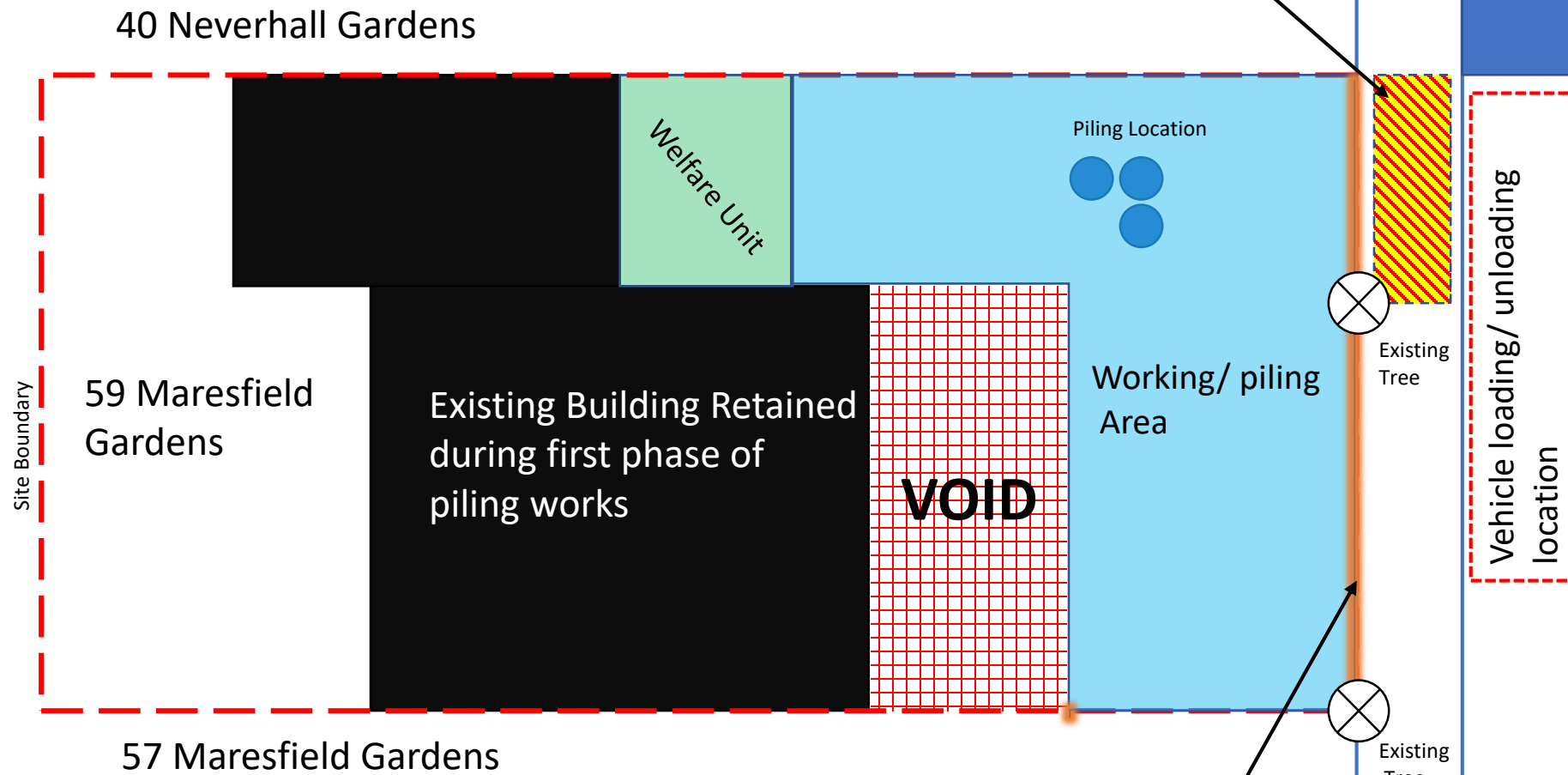
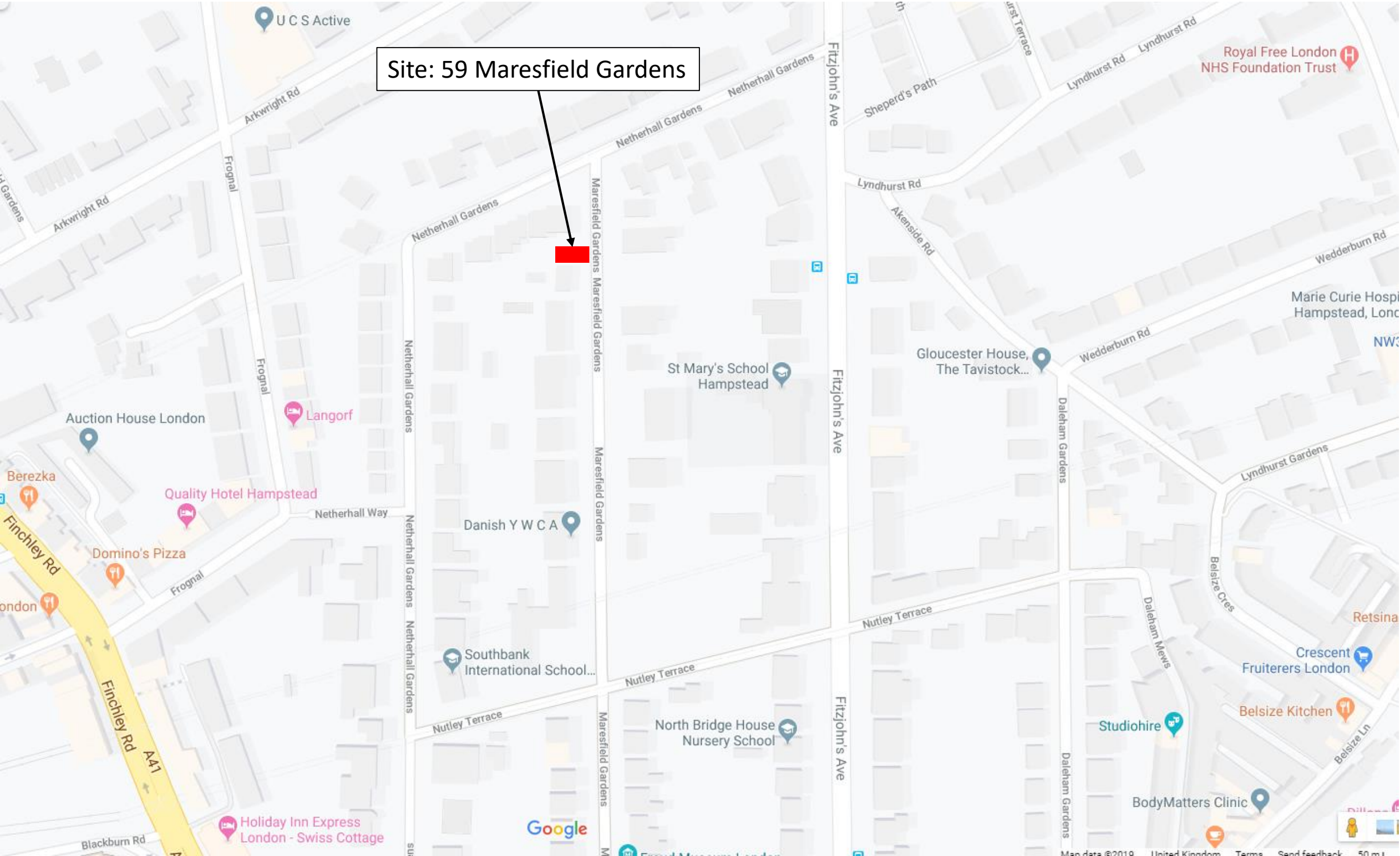




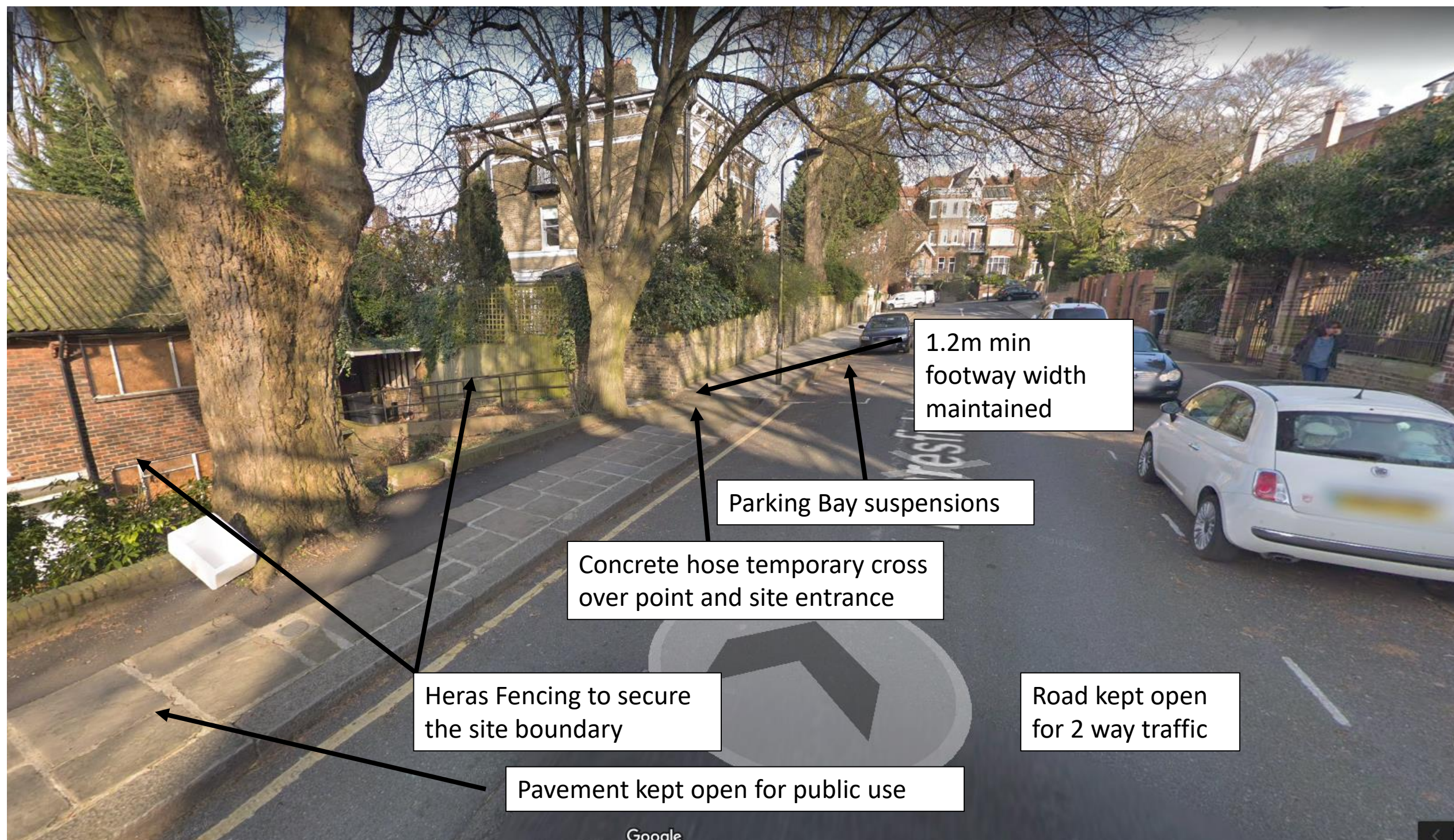
Pavement will be kept open during works. Only when concreting a 4 inch concrete hose will be run across the pavement from the suspended bays. Temporary wooden ramp will be built over the concrete hose with appropriate incline and hand rails.



Heras fencing around the two exposed sides of the site







1.2m min  
footway width  
maintained

Parking Bay suspensions

Concrete hose temporary cross  
over point and site entrance

Heras Fencing to secure  
the site boundary

Pavement kept open for public use

Road kept open  
for 2 way traffic

Google