



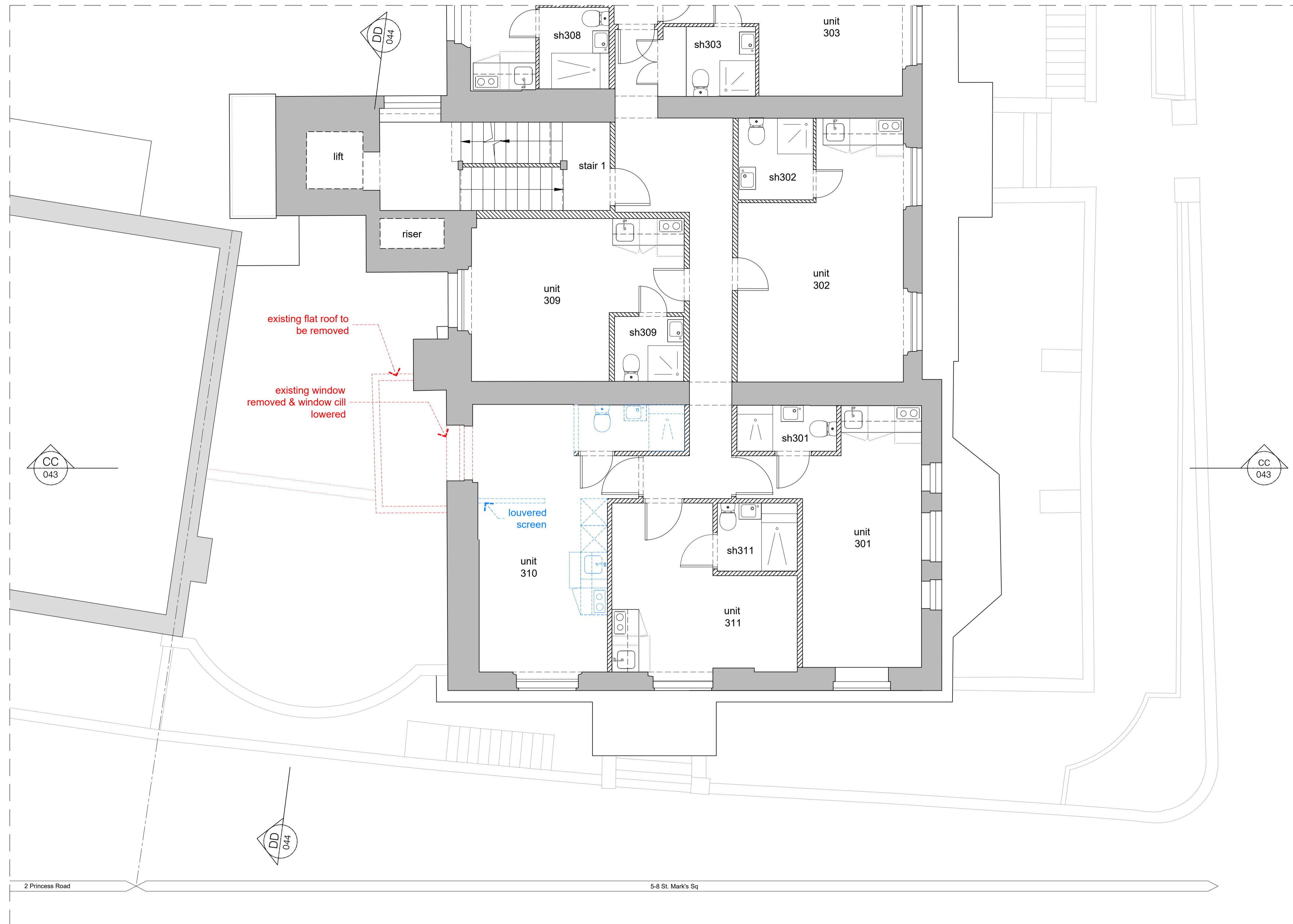


GENERAL NOTES

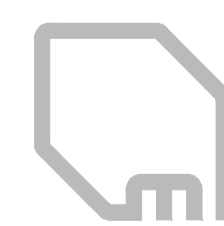
Note: All original features such as cornices & skirting boards to be retained throughout unless otherwise noted

KEY:

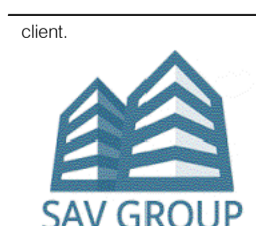
-  Existing original walls to be retained
-  Existing modern fabric to be retained
-  Modern fabric to be demolished/removed
-  Original fabric to be demolished/removed



rev	date	drawn	checked	description
A	03.06.2019	ak	lg	Plans updated



modulor studio
5a Iliffe Yard
London, SE17 3QA
t: +44 (0)20 7193 1717
e: www.modulor-studio.co.uk



client: Vernon Hse, 5-8 St.Marks Sq, NW1 7TN
drawing title: Existing Third Floor Plan showing demolition
scale: 1:50 @ A1 / 1:100 @A3

job no. dwg no. revision

17023 PL4 013 A

©2013 do not scale from drawing report discrepancies immediately