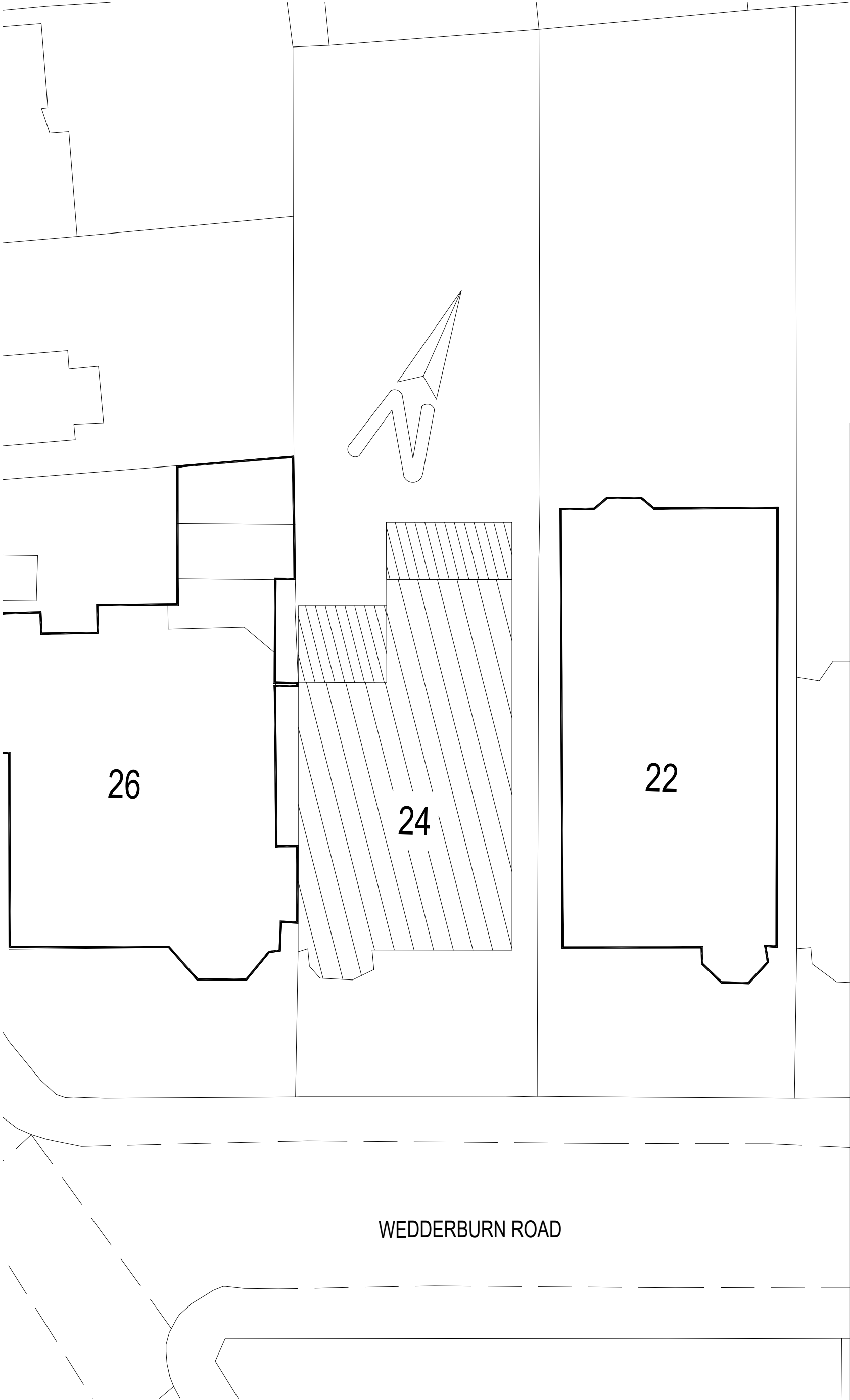


notes:  
The contractors are to check all dimensions, drain runs and general conditions on site before works commence, and inform Akelius immediately upon discovery of any errors, omissions or discrepancies. All works are to be carried out in accordance with current building regulations, British standards, codes of practice and local authority requirements.



Revisions		
The contents of this plan including the printed notes are copyright. Reproduction in whole or part is not permitted without prior consent of Aelske in writing.		
Project	Wedderburn Road, London	
Drawing Title	BLOCK PLAN	
WED2- PL 4A		
Scale	Drawn by	Checked by
A3@1:200	O.F	.....