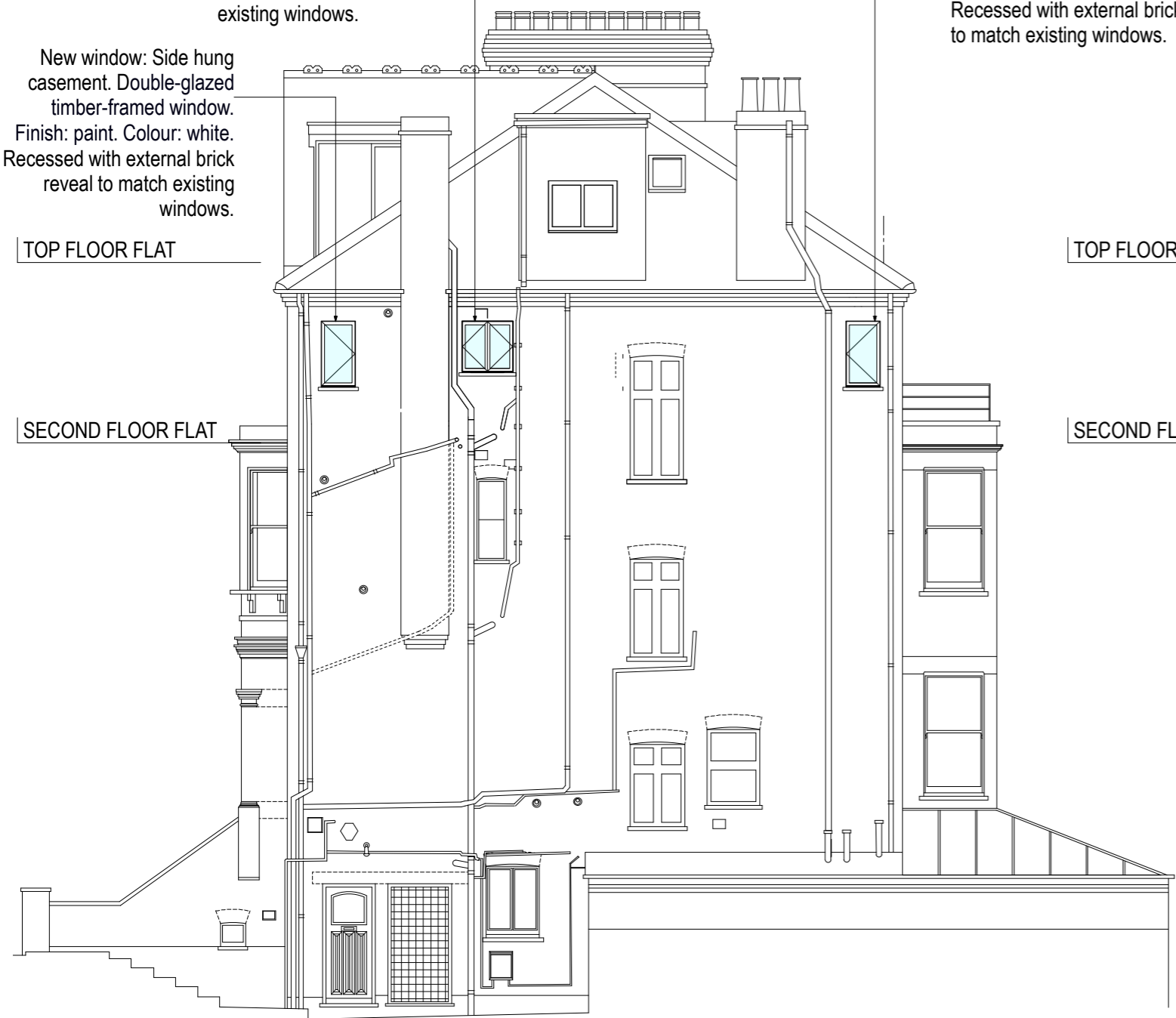


New bathroom window: Replacement window (larger than existing): Double side hung casement with obscured glazing. Double-glazed timber-framed window. Finish: paint. Colour: white. Recessed with external brick reveal to match existing windows.

New window: Side hung casement. Double-glazed timber-framed window. Finish: paint. Colour: white. Recessed with external brick reveal to match existing windows.

TOP FLOOR FLAT

SECOND FLOOR FLAT



SIDE ELEVATION: AS PROPOSED

New window: Side hung casement. Double-glazed timber-framed window. Finish: paint. Colour: white. Recessed with external brick reveal to match existing windows.

TOP FLOOR FLAT

SECOND FLOOR FLAT



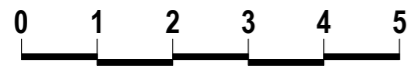
REAR ELEVATION: AS PROPOSED

Existing railing altered: Height increased to meet current building regulations. Painted steel railings Colour: black

New fixed (non-opening) recessed/ inline 'Conservation' roof window. External finish (frame): Aluminium Colour: Anthracite Grey

2ND FLOOR FLAT, 17 TANZA ROAD NW3

SIDE & REAR ELEVATIONS: AS PROPOSED  
SCALE 1-100 @ A3



SCALE - METRES

NOTES/REVISIONS		charlick + nicholson architects	DWG NO.	TNZ - PP - 13	REV	C
Dimensions to be verified on site. Do not scale. Copyright: all rights reserved. This drawing must not be reproduced without permission.		studio 116 westbourne studios 242 acklam road london W10 5JJ	CLIENT	F KELLY		
A 29.03.2019 ISSUED FOR PLANNING		020 8968 0022 mail@charlicknicholson.co.uk	PROJ. TITLE	2ND FLOOR FLAT, 17 TANZA ROAD, NW3		
B 30.05.2019 REVISED FOR PLANNING. DESCRIPTION OF WINDOWS AND ROOFLIGHTS			DWG TITLE	ELEVATIONS SIDE AND REAR - AS PROPOSED		
C 25.06.2019 REVISED FOR PLANNING. DESCRIPTION OF WINDOWS			SCALE	1-100	A3	DATE 29.01.19