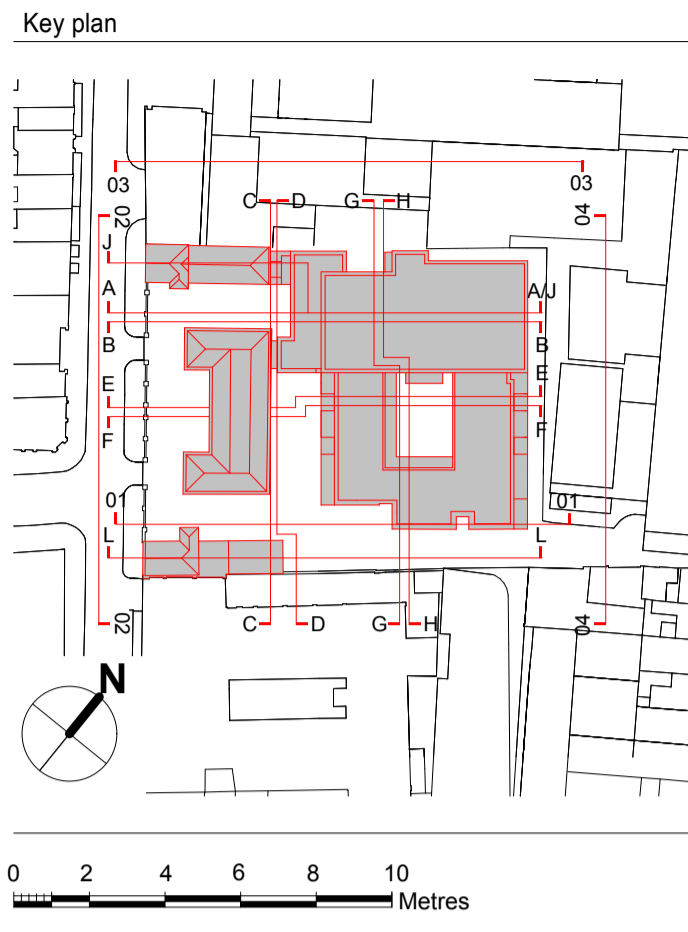


Notes
 - All dimensions to be checked on site
 - Do not scale off this drawing
 - All dimensions are shown in mm unless otherwise stated
 - Refer to drawing issue sheet for purpose of issue
 - If in doubt ask
 - © Lewelyn Davies



Elevation 01

SAC INSTITUTE CLEVELAND STR. PROPOSED DEVELOPMENT ASTOR COLLEGE CHARLOTTE STR. 80 CHARLOTTE ST

- FACADE MATERIALS
1. Brick "White Engobe"
 2. Brick "White Glazed"
 3. Brick "Staffordshire Blue"
 4. Aluminium Frame Windows/Doors (Dark)
 5. Aluminium Rainscreen Cladding (Dark Grey)
 6. Metal Railing
 7. Aluminium Louvres Panels (Dark Colour)
 8. Aluminium Coping
 9. Hardwood Panel



Elevation 02

80 CHARLOTTE ST WINDEYER INSTITUTE OF MEDICAL PROPOSED DEVELOPMENT BEDFORD PASSAGE SOUTH HOUSE MIDDLESEX HOUSE

Rev	Description	Date	By	Chk
F	Planning Amendments	15.02.19	FM	PB
E	Revised Scheme	24.08.18	LD	PB
D	Revised Scheme - Office Entrance Amended	27.06.18	AM	PB
C	Revised Scheme	15.03.18	AM	PB
B	For Planning Rev B	04.06.17	AM	PB
A	For Planning Rev A	04.04.17	GC	PB
D	For Planning	29.01.17	GC	PB

Project Title
BEDFORD PASSAGE DEVELOPMENT
BEDFORD HOUSE:
 MRI SUITE (D1) COMMERCIAL (B1)
BEDFORD COURT:
 AFFORDABLE HOUSING (C3)

Client
 University College London
 Hospitals Charity (UCLHC)

Drawing Title
 Proposed Elevations 01 & 02

Project Number LD15 078.00 Drawing Number E_00_01-02 Revision F

Scale @ A1
 1:200
 Date
 04/04/2017

Architects
LLEWELYN DAVIES

3rd floor | 3-5 Rathbone Place | London | W1T 1HJ
 T +44(0)20 7907 7900 | E london@ldavies.com
 www.ldavies.com



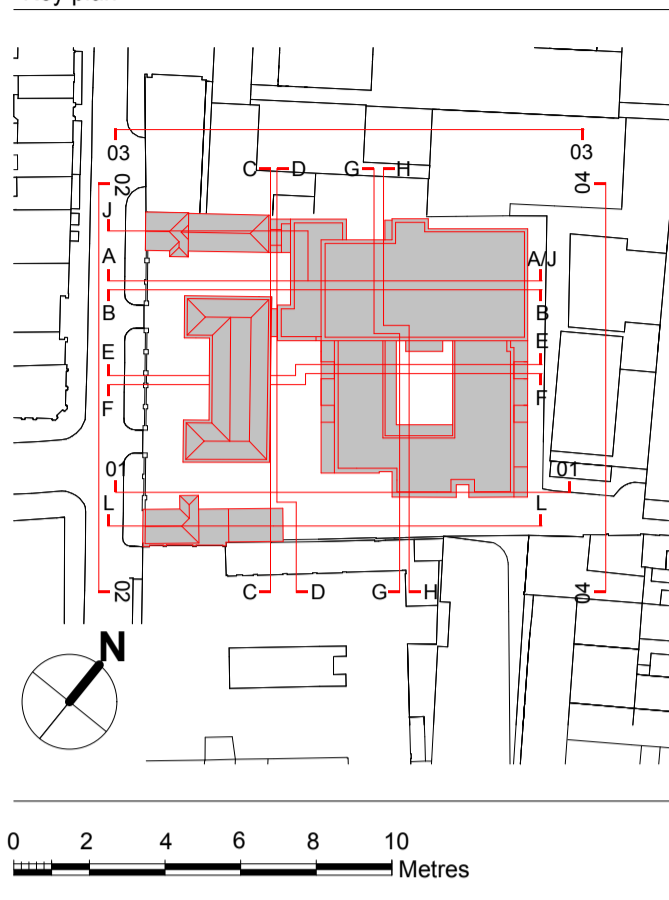
Elevation 03



Elevation 04



Notes
 - All dimensions to be checked on site
 - Do not scale off this drawing
 - All dimensions are shown in mm unless otherwise stated
 - Refer to drawing issue sheet for purpose of issue
 - If in doubt ask
 - © Llewelyn Davies



- FACADE MATERIALS
1. Brick "White Engobe"
 2. Brick "White Glazed"
 3. Brick "Staffordshire Blue"
 4. Aluminium Frame Windows/Doors (Dark)
 5. Aluminium Rainscreen Cladding (Dark Grey)
 6. Metal Railing
 7. Aluminium Louvres Panels (Dark Colour)
 8. Aluminium Coping
 9. Hardwood Panel

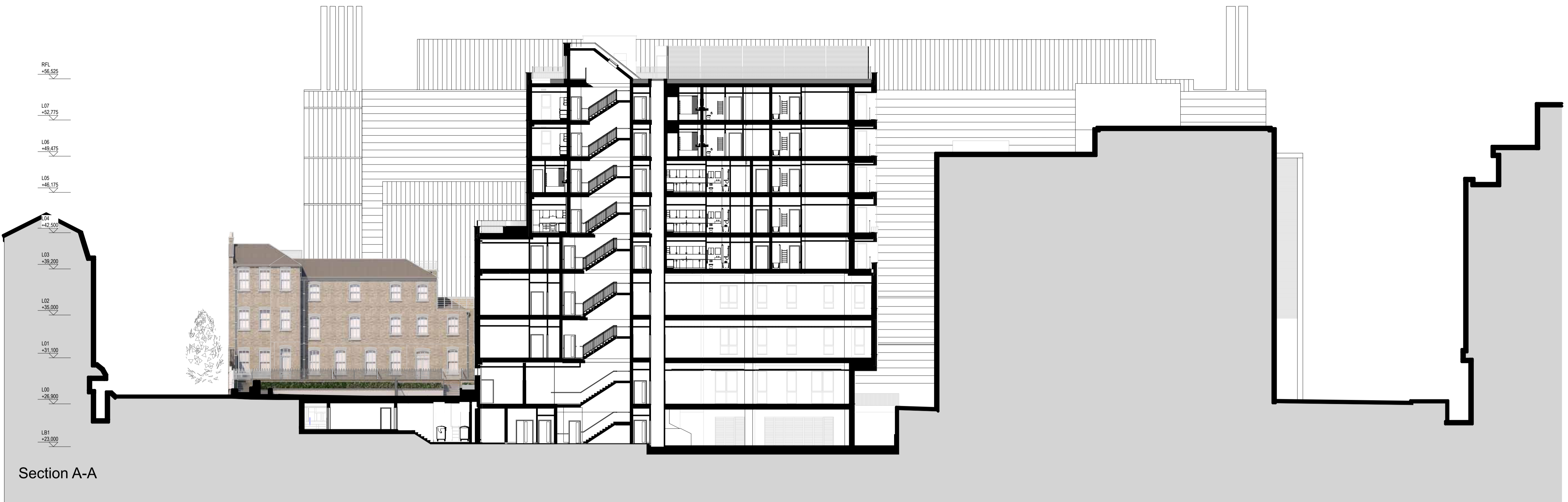
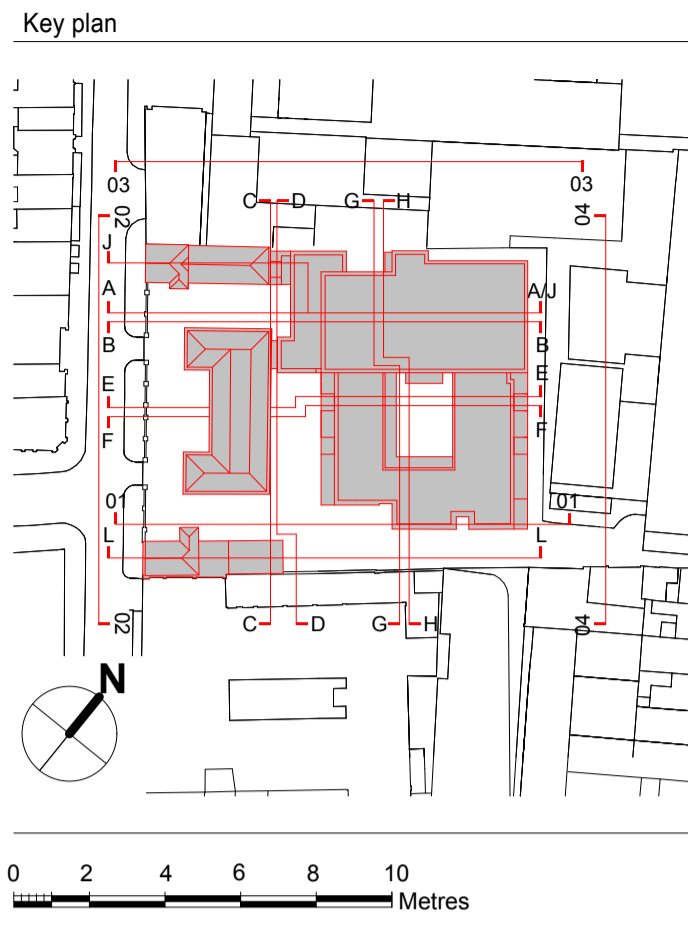
Rev	Description	Date	By	Chk
E	Planning Amendments	15.02.19	FM	PB
D	Revised Scheme	24.08.18	LD	PB
C	Revised Scheme	12.03.18	AM	PB
B	For Planning Rev B	04.06.17	AM	PB
A	For Planning Rev A	04.04.17	GC	PB
D	For Planning	29.01.17	GC	PB

Project Title
BEDFORD PASSAGE DEVELOPMENT
BEDFORD HOUSE:
 MRI SUITE (D1), COMMERCIAL (B1)
BEDFORD COURT:
 AFFORDABLE HOUSING (C3)
 Client
 University College London
 Hospitals Charity (UCLHC)
 Drawing Title
 Proposed Elevations 03 & 04

Project Number
 LD15 078.00
 Drawing Number
 E_01_03-04
 Revision
 E
 Scale @ A1
 1:200
 Date
 04/04/2017
 Architects

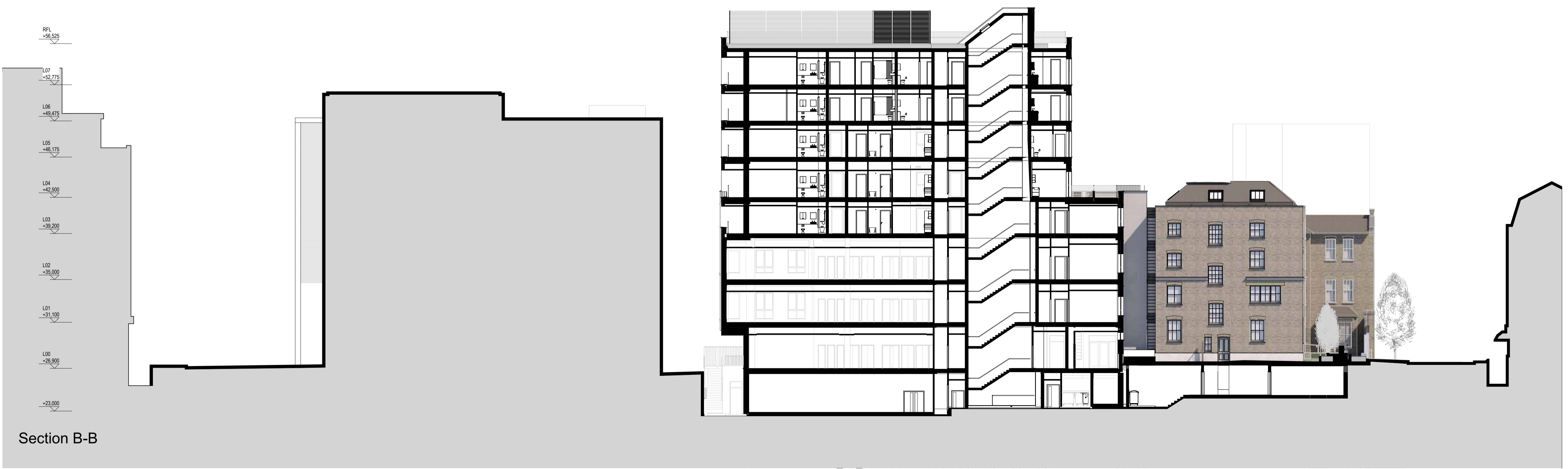
LLEWELYN DAVIES
 3rd floor | 3-5 Rathbone Place | London | W1T 1HJ
 T +44(0)20 7907 7900 | E london@ldavies.com
 www.ldavies.com

- Notes
- All dimensions to be checked on site
 - Do not scale off this drawing
 - All dimensions are shown in mm unless otherwise stated
 - Refer to drawing issue sheet for purpose of issue
 - If in doubt ask
 - © Llewelyn Davies



Section A-A

SAC INSTITUTE CLEVELAND STR. PROPOSED DEVELOPMENT ASTOR COLLEGE CHARLOTTE STR. 80 CHARLOTTE ST



Section B-B

80 CHARLOTTE ST CHARLOTTE STR. ASTOR COLLEGE PROPOSED DEVELOPMENT CLEVELAND STR. SAC INSTITUTE

Rev	Description	Date	By	Chk
E	Planning Amendments	15.02.19	FM	PB
D	Revised Scheme	24.08.18	LD	PB
C	Revised Scheme	15.03.18	AM	PB
B	For Planning Rev B	04.06.17	AM	PB
A	For Planning Rev A	04.04.17	GC	PB
D	For Planning	29.01.17	GC	PB

Project Title
BEDFORD PASSAGE DEVELOPMENT
BEDFORD HOUSE:
 MRI SUITE (D1) COMMERCIAL (B1)
BEDFORD COURT:
 AFFORDABLE HOUSING (C3)

Client
 University College London
 Hospitals Charity (UCLHC)

Drawing Title
 Proposed Sections AA & BB

Project Number Drawing Number Revision
 LD15 078.00 S_01_AA-BB E

Scale @ A1
 1:200

Date
 04/04/2017

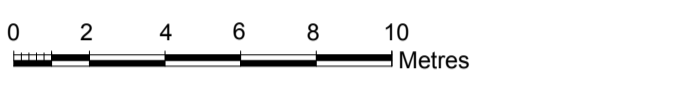
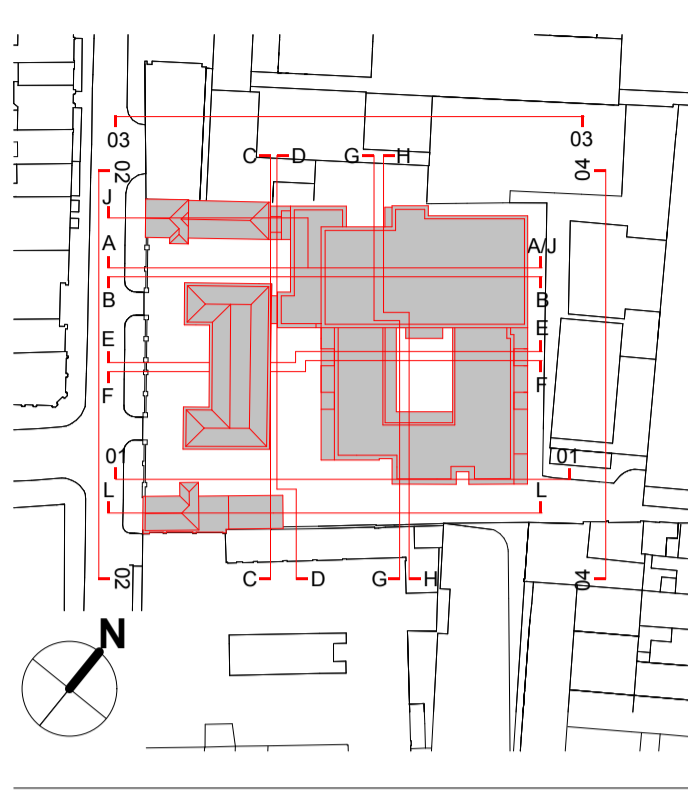
Architects
LLEWELYN DAVIES

3rd floor | 3-5 Rathbone Place | London | W1T 1HJ
 T +44(0)20 7907 7900 | E london@ldavies.com
 www.ldavies.com

Notes

- All dimensions to be checked on site
- Do not scale off this drawing
- All dimensions are shown in mm unless otherwise stated
- Refer to drawing issue sheet for purpose of issue
- If in doubt ask
- © Llewelyn Davies

Key plan

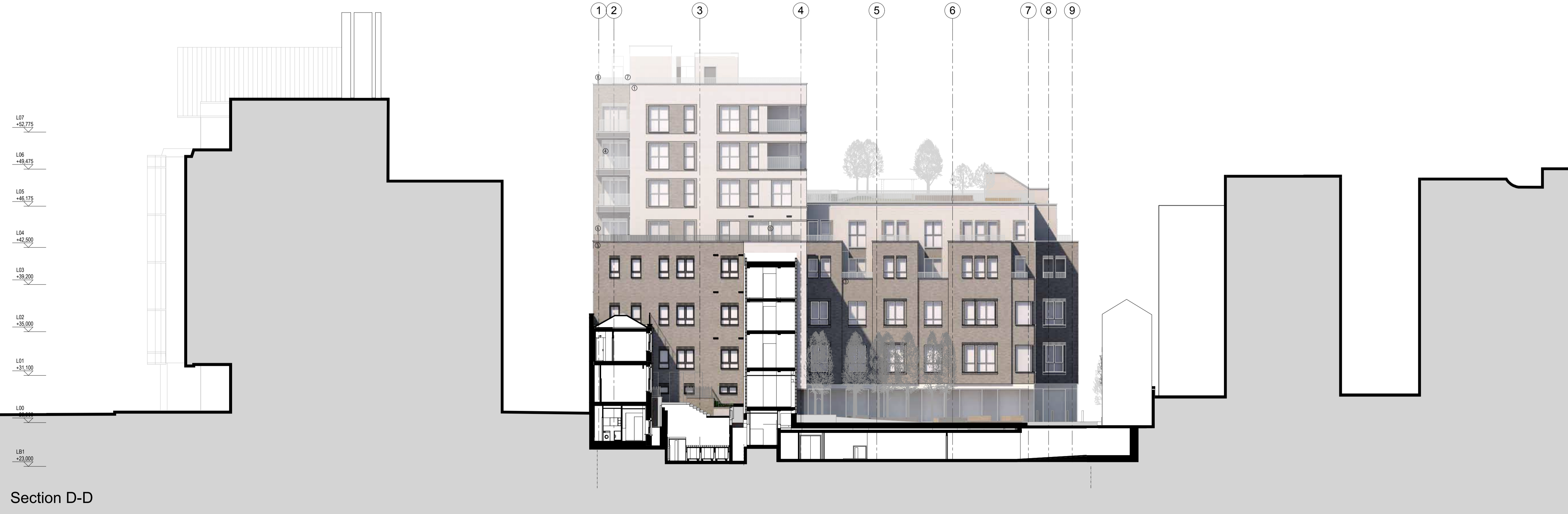
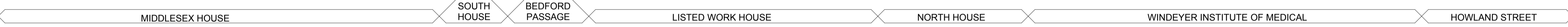


FACADE MATERIALS

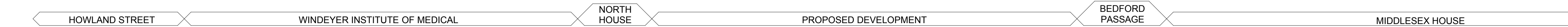
1. Brick "White Engobe"
2. Brick "White Glazed"
3. Brick "Staffordshire Blue"
4. Aluminium Frame Windows/Doors (Dark)
5. Aluminium Rainscreen Cladding (Dark Grey)
6. Metal Railing
7. Aluminium Louvres Panels (Dark Colour)
8. Aluminium Coping
9. Hardwood Panel



Section C-C



Section D-D



Rev	Description	Date	By	Chk
D	Planning Amendments	15.02.19	FM	PB
C	Revised Scheme	24.08.18	LD	PB
B	Revised Scheme	12.03.18	AM	PB
A	For Planning Rev A	04.04.17	GC	PB
D	For Planning	20.01.17	GC	PB

Project Title

BEDFORD PASSAGE DEVELOPMENT
BEDFORD HOUSE:
 MRI SUITE (D1), COMMERCIAL (B1)
BEDFORD COURT:
 AFFORDABLE HOUSING (C3)

Client
 University College London
 Hospitals Charity (UCLHC)

Drawing Title
 Proposed Sections CC & DD

Project Number LD15 078.00
 Drawing Number S_02_CC-DD
 Revision D

Scale @ A1
 1:200

Date
 04/04/2017

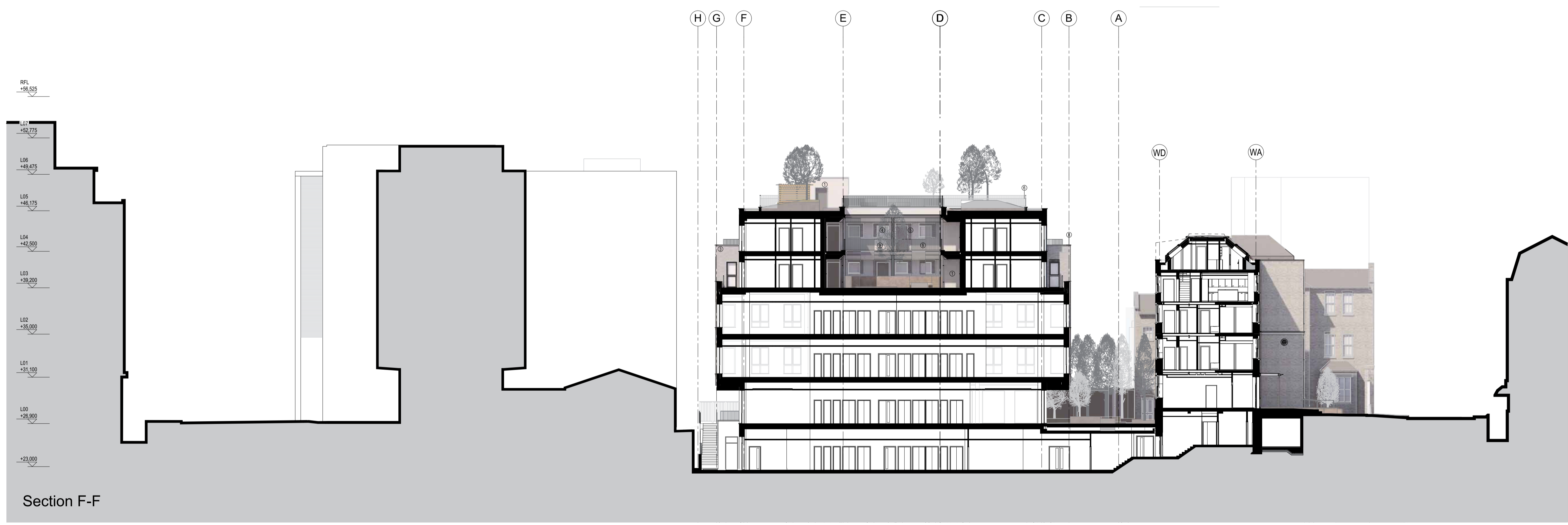
Architects





Section E-E

SAC INSTITUTE CLEVELAND STR. PROPOSED DEVELOPMENT ASTOR COLLEGE CHARLOTTE STR. 80 CHARLOTTE ST



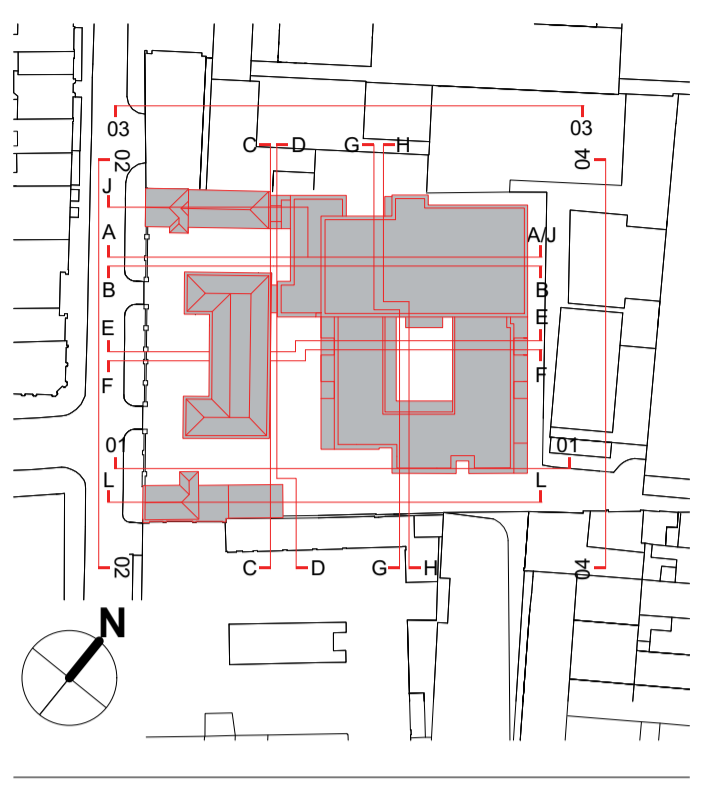
Section F-F

80 CHARLOTTE ST CHARLOTTE STR. ASTOR COLLEGE PROPOSED DEVELOPMENT CLEVELAND STR. SAC INSTITUTE

Notes

- All dimensions to be checked on site
- Do not scale off this drawing
- All dimensions are shown in mm unless otherwise stated
- Refer to drawing issue sheet for purpose of issue
- If in doubt ask
- © Llewelyn Davies

Key plan



FACADE MATERIALS

1. Brick "White Engobe"
2. Brick "White Glazed"
3. Brick "Staffordshire Blue"
4. Aluminium Frame Windows/Doors (Dark)
5. Aluminium Rainscreen Cladding (Dark Grey)
6. Metal Railing
7. Aluminium Louvres Panels (Dark Colour)
8. Aluminium Coping
9. Hardwood Panel

Rev	Description	Date	By	Chk
D	Planning Amendments	15.02.19	FM	PB
C	Revised Scheme	24.08.18	LD	PB
B	Revised Scheme	12.03.18	AM	PB
A	For Planning Rev A	04.04.17	GC	PB
D	For Planning	29.01.17	GC	PB

Project Title

BEDFORD PASSAGE DEVELOPMENT
BEDFORD HOUSE:
 MRI SUITE (D1), COMMERCIAL (B1)
BEDFORD COURT:
 AFFORDABLE HOUSING (C3)

Client

University College London
 Hospitals Charity (UCLHC)

Drawing Title

Proposed Sections EE & FF

Project Number	Drawing Number	Revision
LD15 078.00	S_03_EE-FF	D

Scale @ A1
 1:200

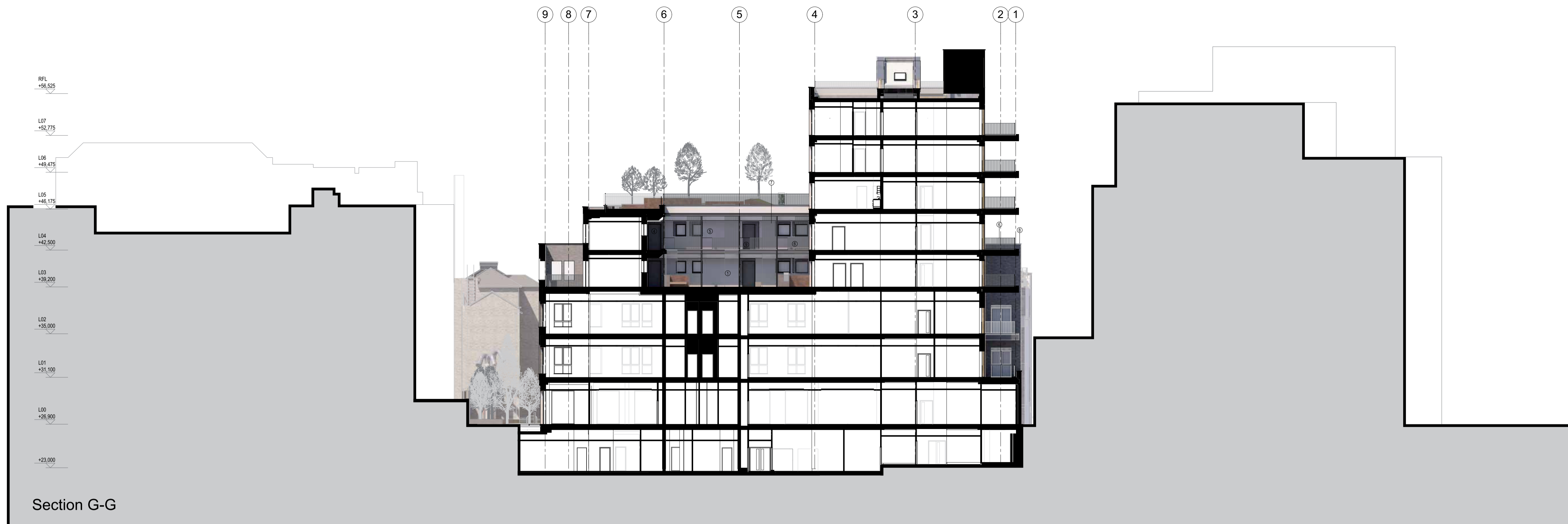
Date

04/04/2017

Architects



3rd floor | 3-5 Rathbone Place | London | W1T 1HJ
 T +44(0)20 7907 7900 | E london@ldavies.com
 www.ldavies.com



Section G-G

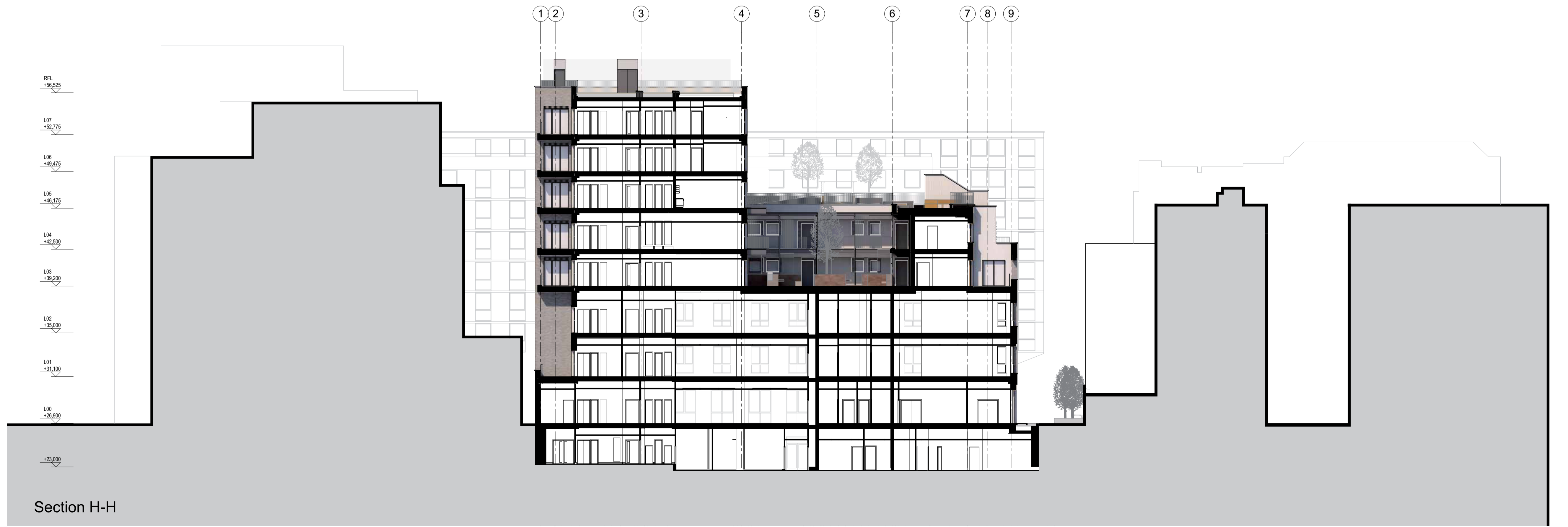
TOTTENHAM MEWS

BEDFORD PASSAGE

PROPOSED DEVELOPMENT

WINDEYER INSTITUTE OF MEDICAL

HOWLAND STREET



Section H-H

HOWLAND STREET

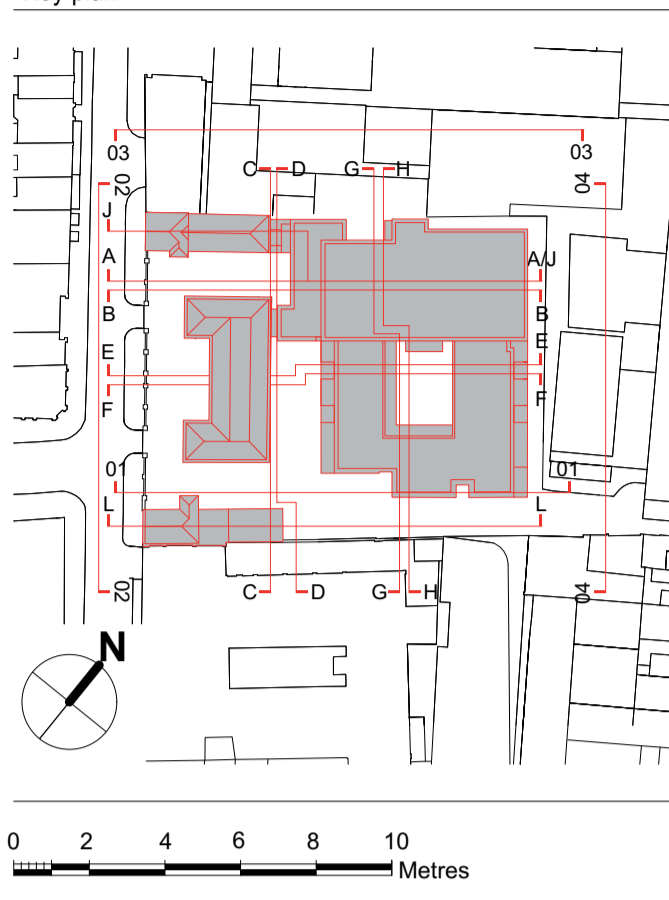
WINDEYER INSTITUTE OF MEDICAL

PROPOSED DEVELOPMENT

BEDFORD PASSAGE

TOTTENHAM MEWS

- Notes
- All dimensions to be checked on site
 - Do not scale off this drawing
 - All dimensions are shown in mm unless otherwise stated
 - Refer to drawing issue sheet for purpose of issue
 - If in doubt ask
 - © Llewelyn Davies



- FACADE MATERIALS
1. Brick "White Engobe"
 2. Brick "White Glazed"
 3. Brick "Staffordshire Blue"
 4. Aluminium Frame Windows/Doors (Dark)
 5. Aluminium Rainscreen Cladding (Dark Grey)
 6. Metal Railing
 7. Aluminium Louvres Panels (Dark Colour)
 8. Aluminium Coping
 9. Hardwood Panel

Rev	Description	Date	By	CHK
D	Planning Amendments	15.02.19	FM	PB
C	Revised Scheme	24.08.18	LD	PB
B	Revised Scheme	12.03.18	AM	PB
A	For Planning Rev A	04.04.17	GC	PB
0	For Planning	29.01.17	GC	PB

Project Title
BEDFORD PASSAGE DEVELOPMENT
BEDFORD HOUSE:
 MRI SUITE (D1), COMMERCIAL (B1)
BEDFORD COURT:
 AFFORDABLE HOUSING (C3)
 Client
 University College London
 Hospitals Charity (UCLHC)
 Drawing Title
 Proposed Sections GG & HH

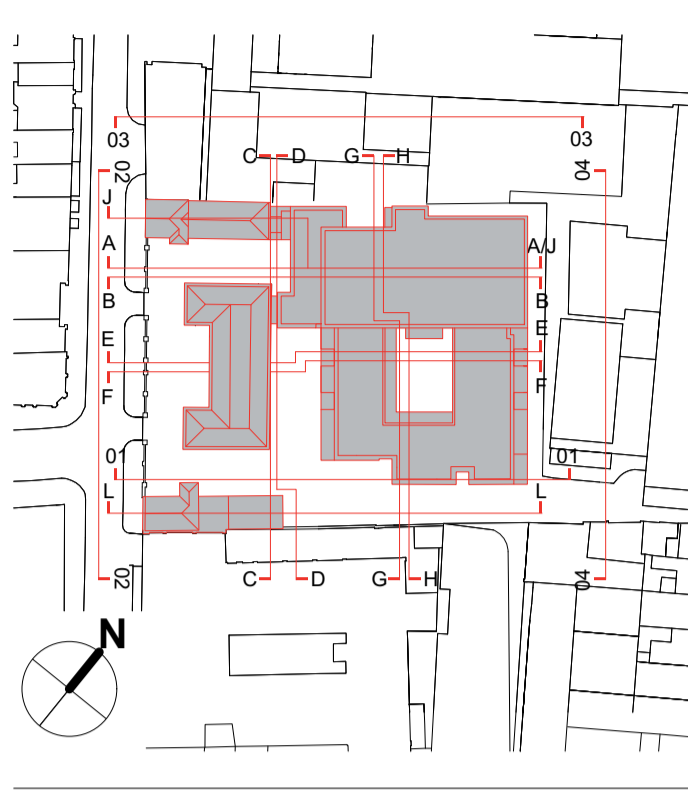
Project Number LD15 078.00
 Drawing Number S_04_GG-HH
 Revision D

Scale @ A1
 1:200
 Date
 04/04/2017
 Architects

Notes

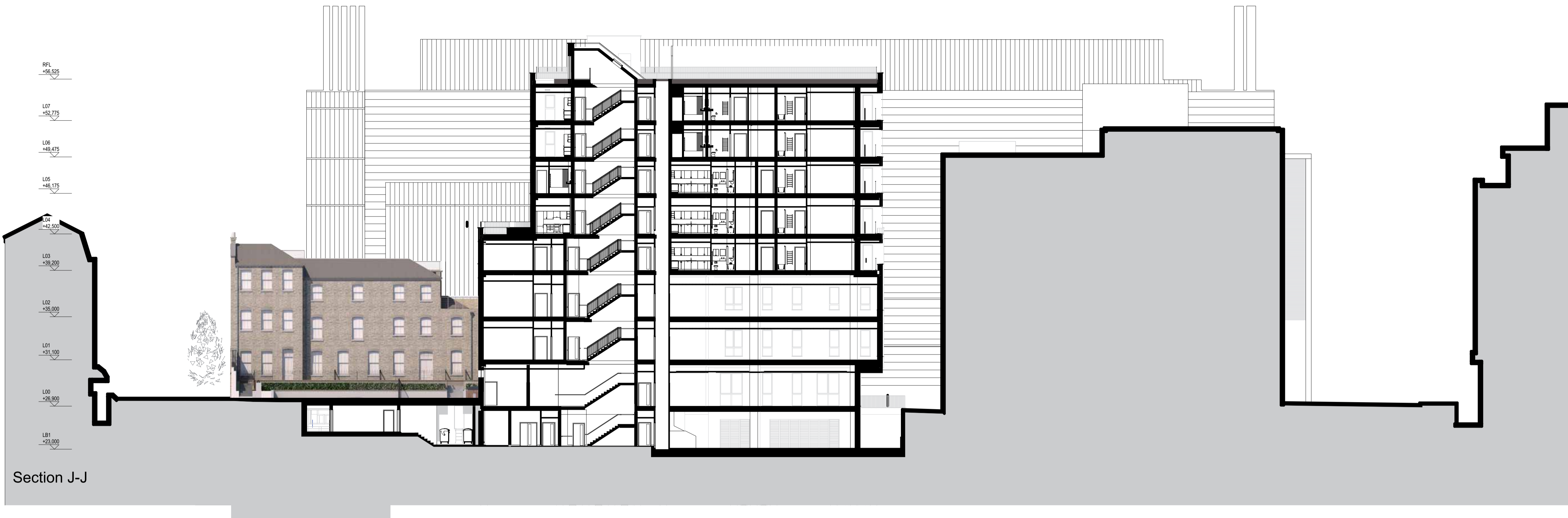
- All dimensions to be checked on site
- Do not scale off this drawing
- All dimensions are shown in mm unless otherwise stated
- Refer to drawing issue sheet for purpose of issue
- If in doubt ask
- © Llewelyn Davies

Key plan



FACADE MATERIALS

1. Brick "White Engobe"
2. Brick "White Glazed"
3. Brick "Staffordshire Blue"
4. Aluminium Frame Windows/Doors (Dark)
5. Aluminium Rainscreen Cladding (Dark Grey)
6. Metal Railing
7. Aluminium Louvres Panels (Dark Colour)
8. Aluminium Coping
9. Hardwood Panel



Section J-J



Section L-L

Rev	Description	Date	By	Chk
E	Planning Amendments	15.02.19	FM	PB
D	Revised Scheme	24.08.18	LD	PB
C	Revised Scheme	12.03.18	AM	PB
B	For Planning Rev B	04.06.17	AM	PB
A	For Planning Rev A	04.04.17	GC	PB
0	For Planning	29.01.17	GC	PB

Project Title
BEDFORD PASSAGE DEVELOPMENT
BEDFORD HOUSE:
 MRI SUITE (D1), COMMERCIAL (B1)
BEDFORD COURT:
 AFFORDABLE HOUSING (C3)

Client
 University College London
 Hospitals Charity (UCLHC)

Drawing Title
 Proposed Sections JJ-LL

Project Number Drawing Number Revision
 LD15 078.00 S_05_JJ-LL E

Scale @ A1
 1:200
 Date
 04/04/2017

Architects
LLEWELYN DAVIES

3rd floor | 3-5 Rathbone Place | London | W1T 1HJ
 T +44(0)20 7907 7900 | E london@ldavies.com
 www.ldavies.com