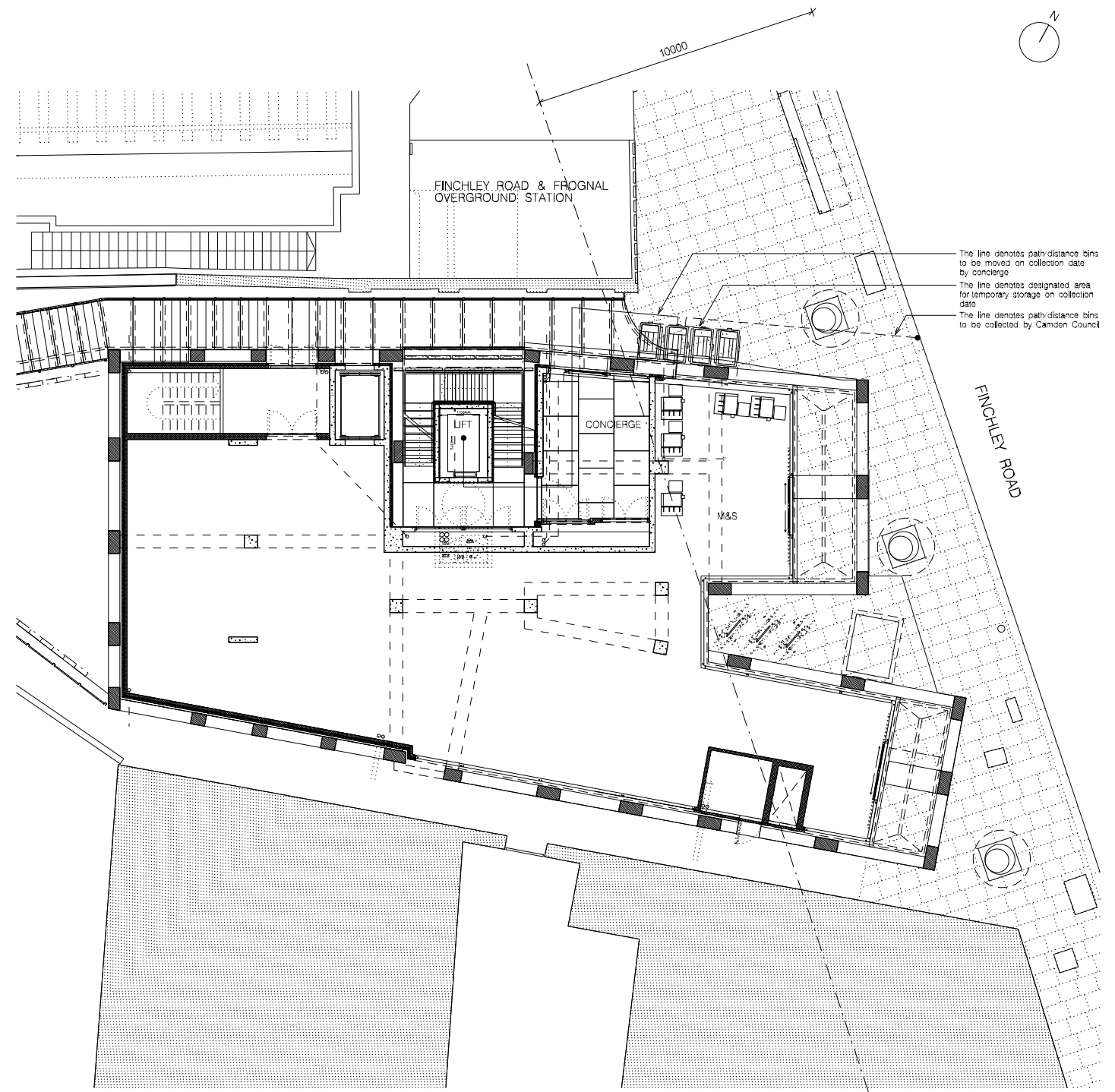


① BASEMENT LEVEL



② STREET LEVEL

RESIDENTIAL

Waste provision for the residential units will be provided via a dedicated bin store at basement level. From here bins will be moved to a collection point on Finchley Road on the day of collection by the building concierge.

In line with the Planning permission the following will be provided for 22 Units:

- 4 x 770L Eurobins 3080L GENERAL WASTE (22FLATS X 120L)
- 4 x 770L Eurobins 3080L MIXED RECYCLABLE (22FLATS X 140L)
- 1 x 770L Eurobins 3080L FOOD WASTE(22FLATS X 23L)

COMMERCIAL

Refuse from the M&S store will be stored inside the back of house area of the store and will be collected by privately contracted waste vehicles which typically will collect waste once a day. M&S operate a zero operational waste to landfill policy. That means that all of M&S* waste generated by stores is primarily recycled and, if it cannot be recycled, it is sent to recovery, which means they create energy from waste. All of M&S* food waste is sent to anaerobic digestion which creates electricity that goes direct to the grid.*

| REVISION: | PURPOSE: | DATE: |
|-----------|--------------------|------------|
| A | ISSUED TO PLANNING | 19.04.2018 |
| B | ISSUED TO PLANNING | 09.06.2019 |

1. The design and these drawings are the sole copyright of Arca Taka Architects ts (Company) Ltd, London, U.K. (UK) T: 020 7553 8444 F: 020 7263 9655.
 2. Do not scale from this drawing in order to determine dimensions. Use written dimensions only. To check drawing has been printed to the intended scale this bar should be 30mm long @A1

I=Information
 C=Comment
 H=Hatching
 T=Text
 S=Construction

GROUPWORK
 12 - 13 CLERKENWELL GREEN, LONDON, EC1R 0DJ

CLIENT: 317 Finchley Road

PROJECT: 317 Finchley Road
 London NW3 6EP

DWG TITLE: Waste Strategy

REVISION: B
 DATE: APR 2018
 DWG No: 240 - 1100
 PURPOSE OF ISSUE: P

SCALE: @ A1 1:100 @ A3 1:200
 DR: DK
 CR: AT