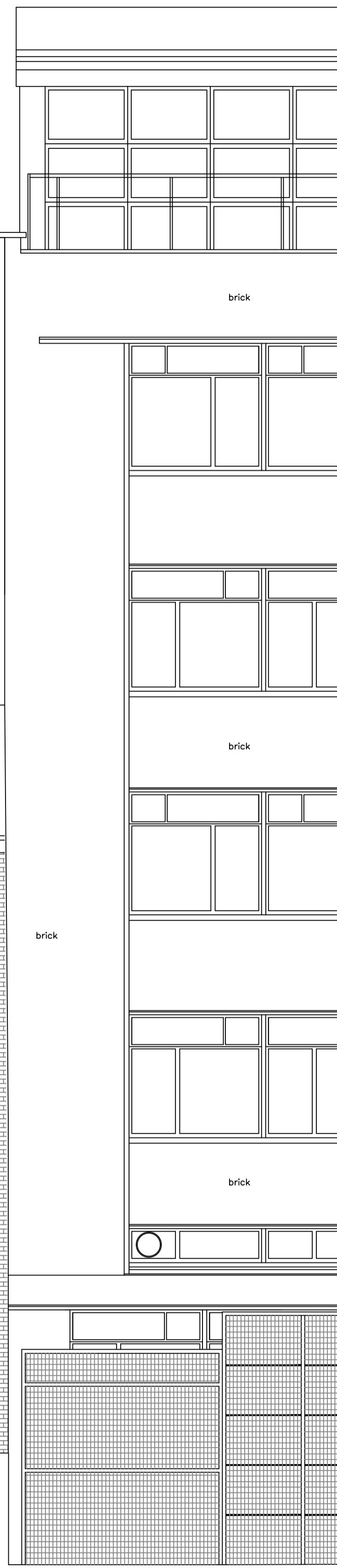
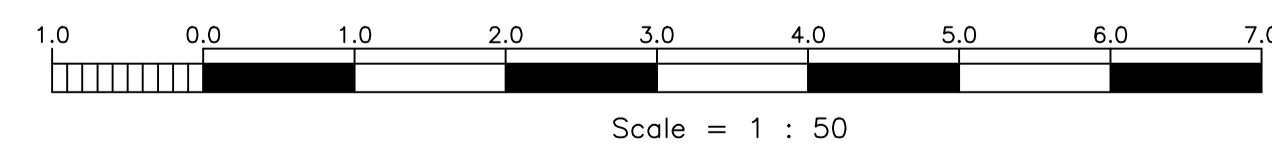


KOKO



NORTH EAST ELEVATION (BAYHAM PLACE) $\pm 22.00m$ A.O.D.



PLANNING ISSUE

revision	date	initials	description of amendments
E	JUNE 2019	FAL	GF SHUTTERS ADDED W/SHOWER REVISIONS
D	02.2019	FAL	PLANNING ISSUE

	<small>Omnibus, 39-41 North Road, London, N7 9DP Email: info@foundation-architecture.com</small>			
	<small>project</small> 2-6 CAMDEN HIGH STREET	<small>title</small> REAR ELEVATION PROPOSED		
<small>scale</small> 1:50 @ A1	<small>date</small> OCT 2017	<small>drawn</small> FAL	<small>checked</small> 540	<small>sheet no.</small> P301
<small>rev.</small> E				<small>All dimensions to be verified on site.</small>

*Scale is 1:100 at A3

PROPOSED