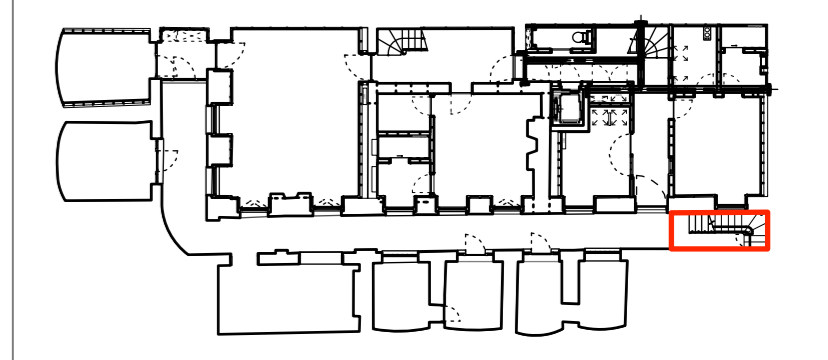
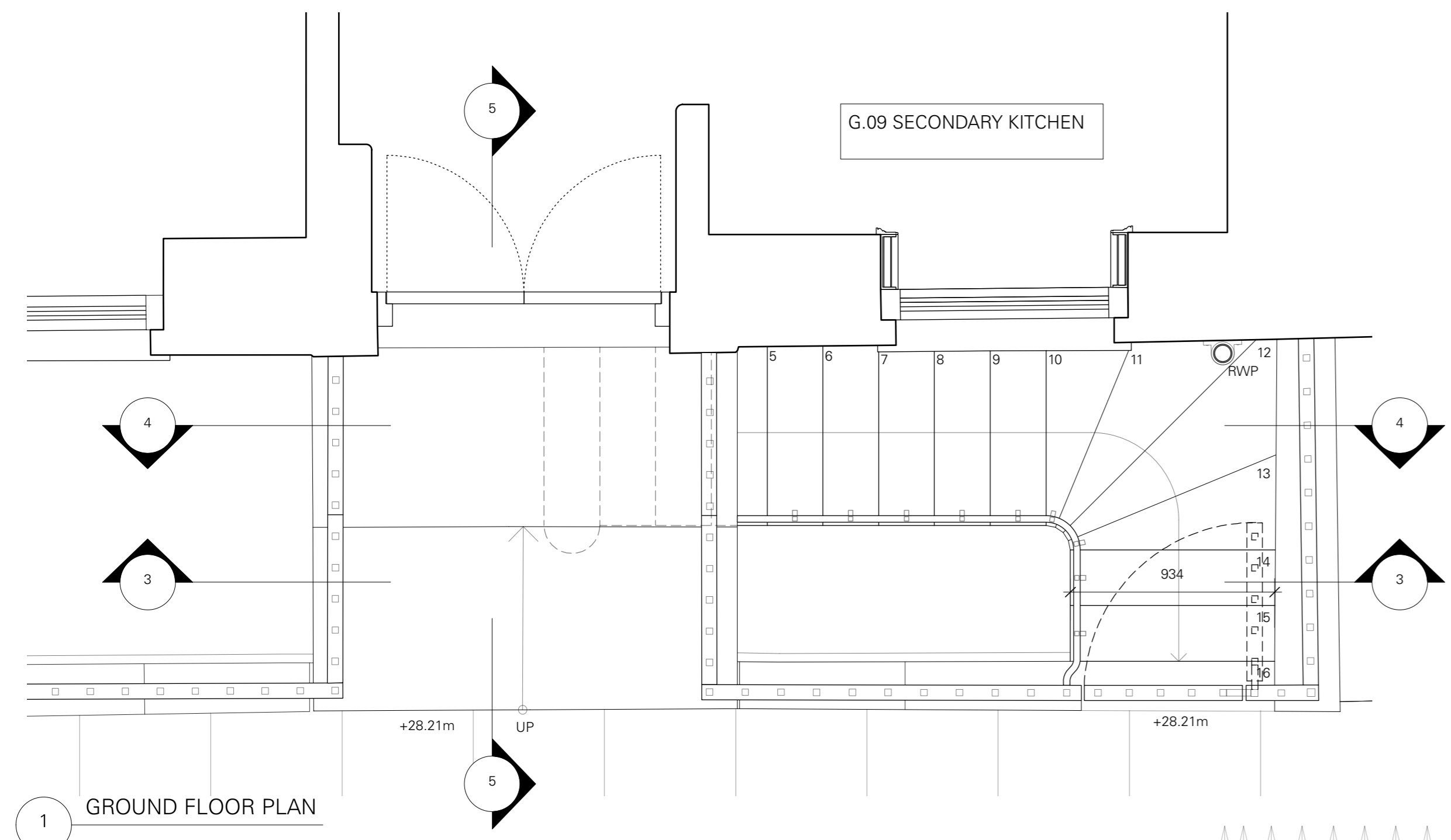


Do not scale working dimensions from this drawing. Read drawings in conjunction with all relevant consultant drawings and specifications. In case of incongruities between information - consult the architect for final decision. Deviations from these drawings shall not be made without first consulting the architect.

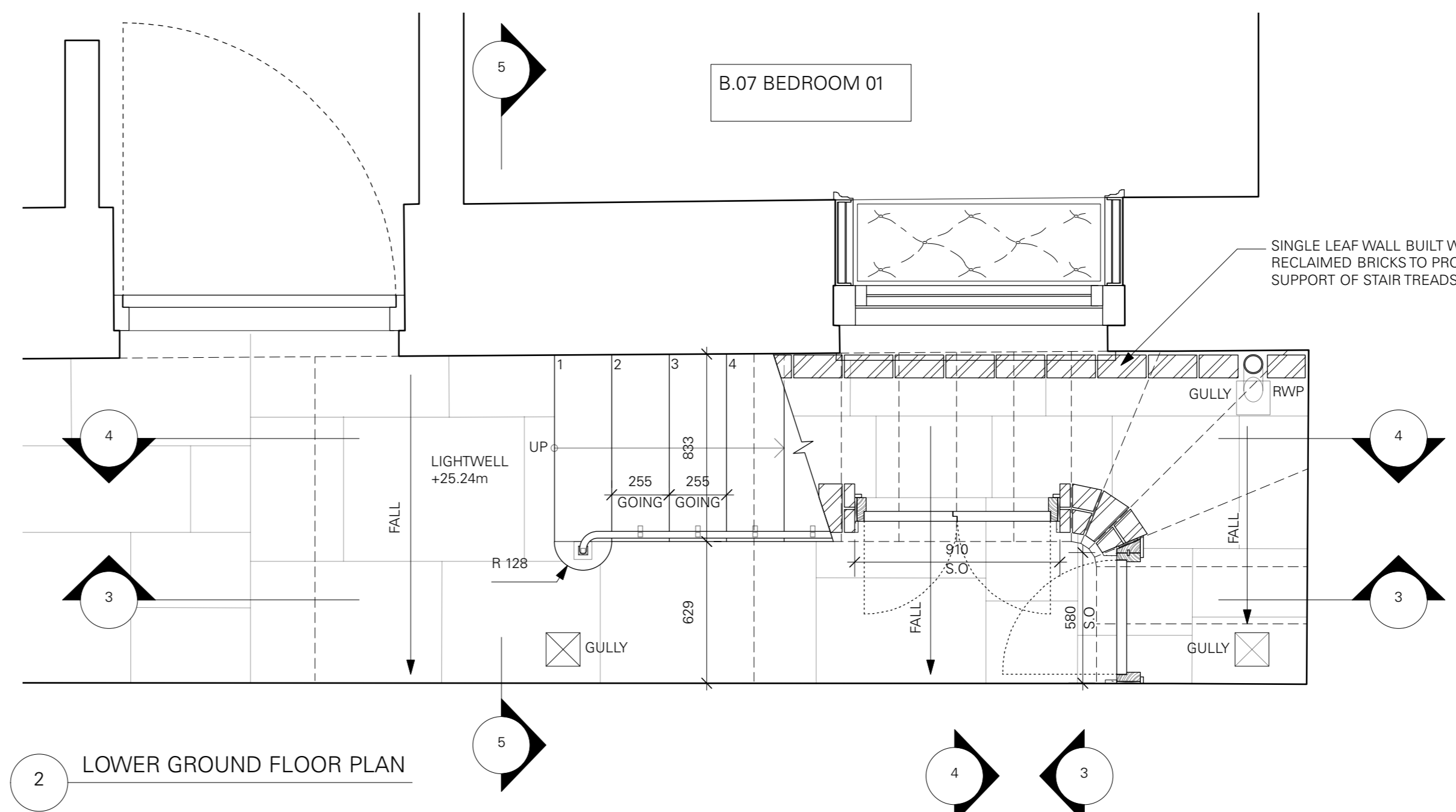
NOTES:



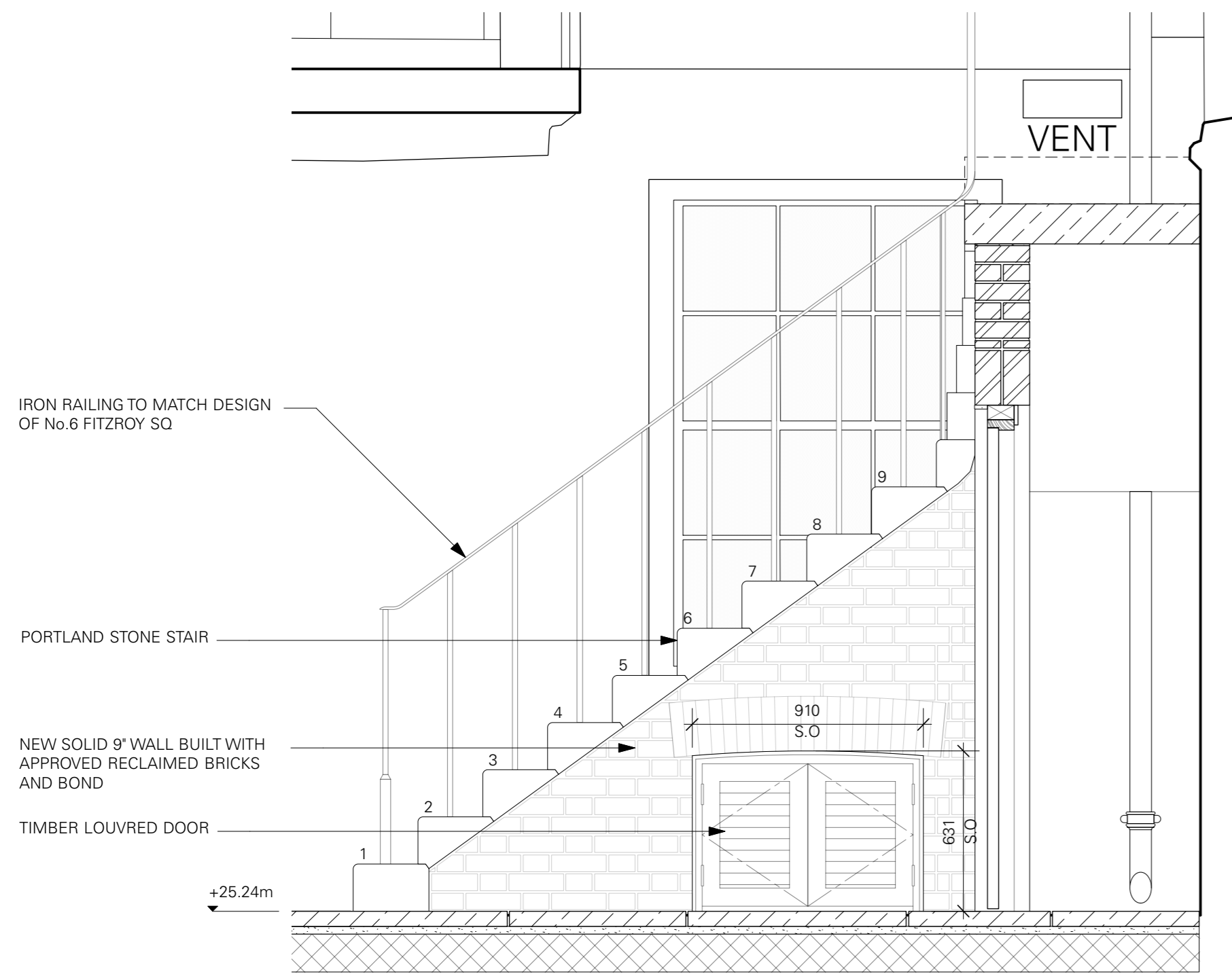
KEY PLAN - LOWER GROUND FLOOR



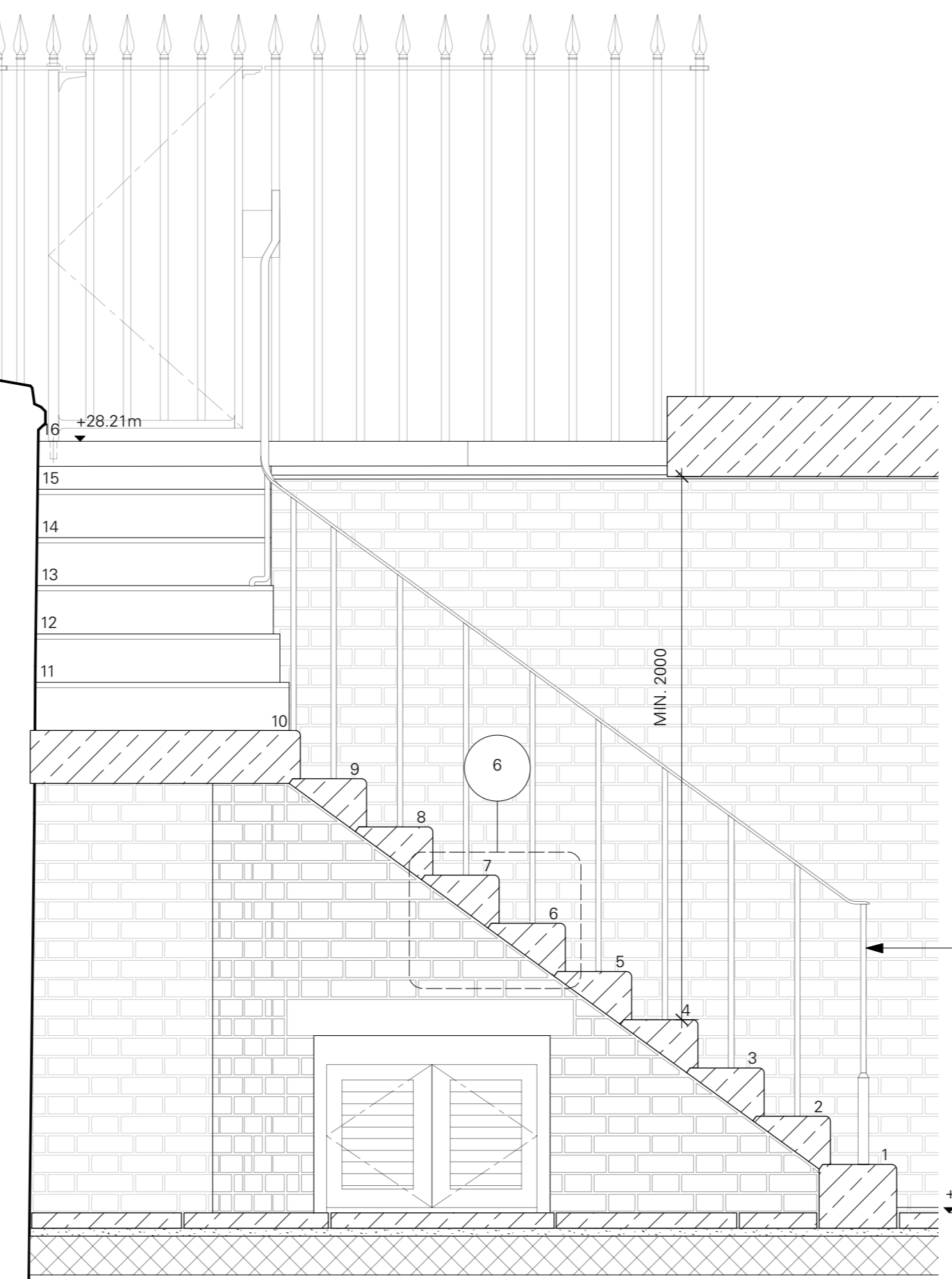
1 GROUND FLOOR PLAN



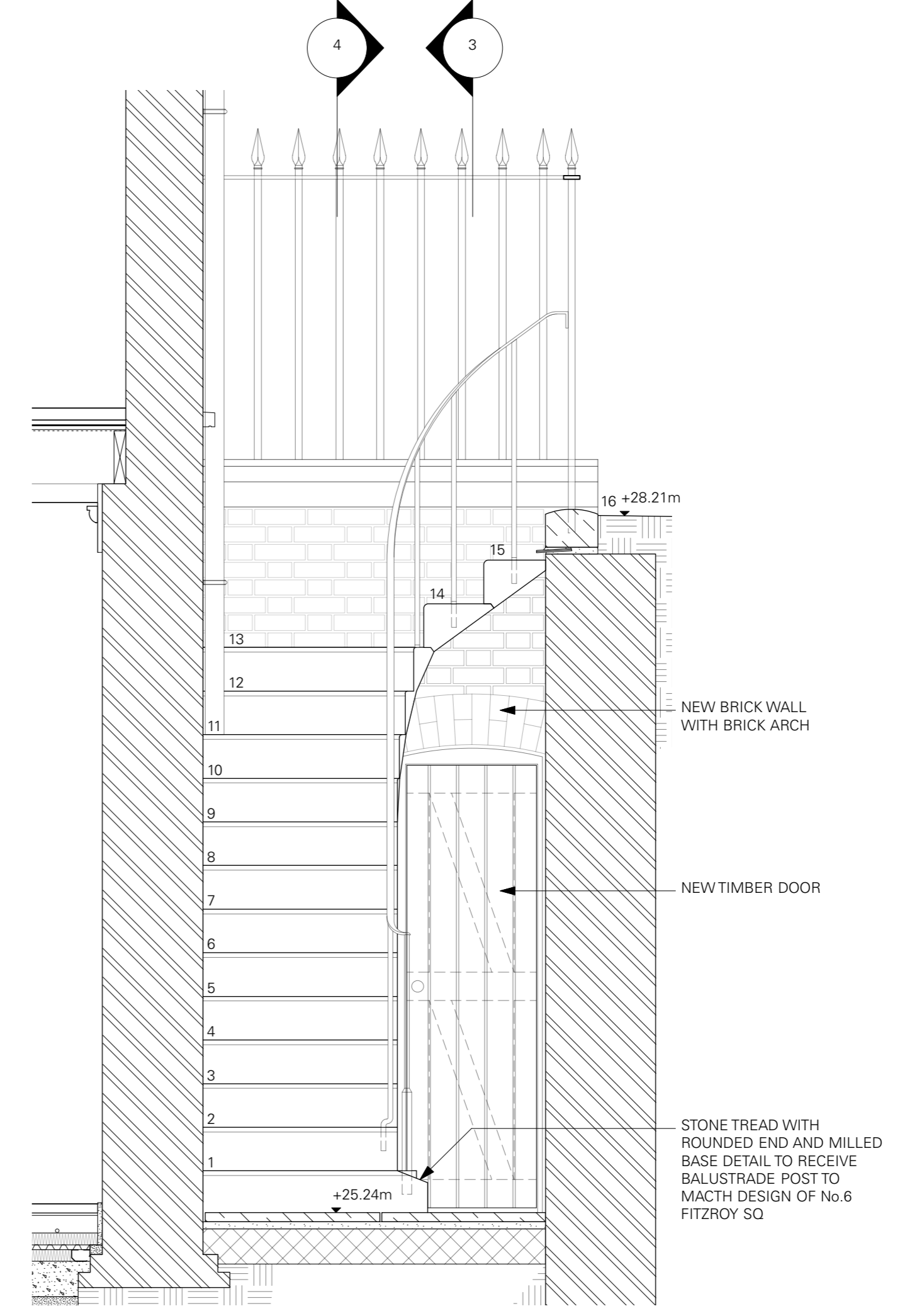
2 LOWER GROUND FLOOR PLAN



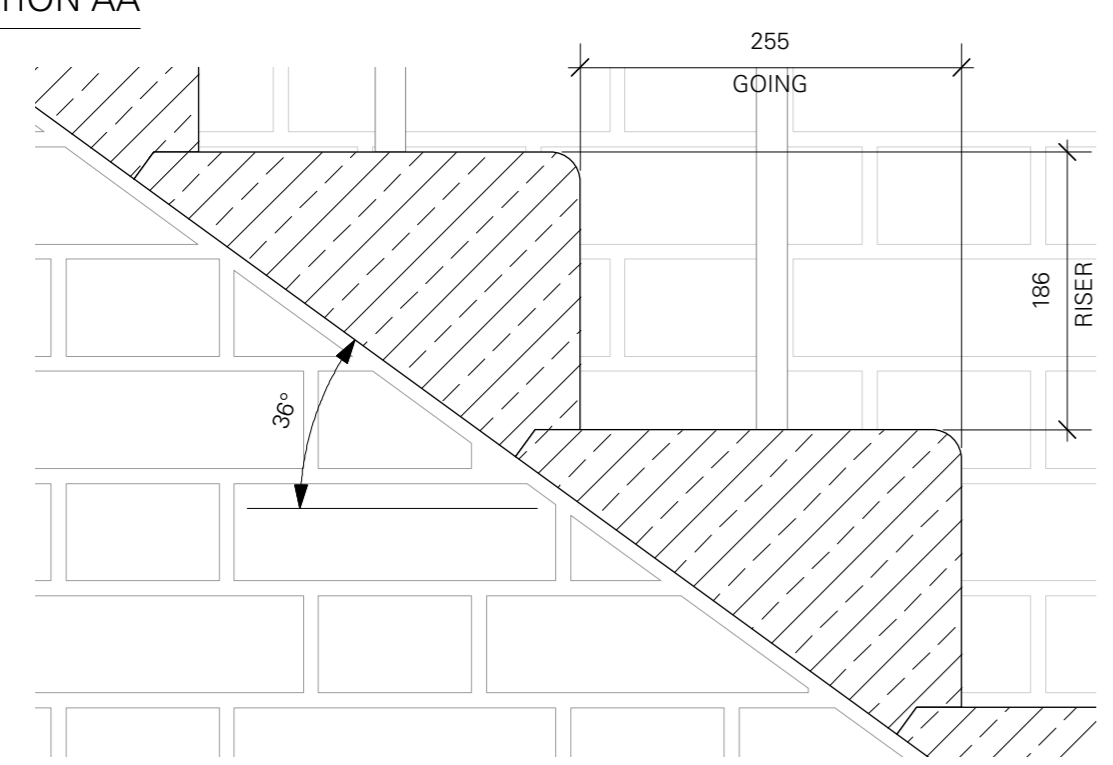
3 SECTION AA



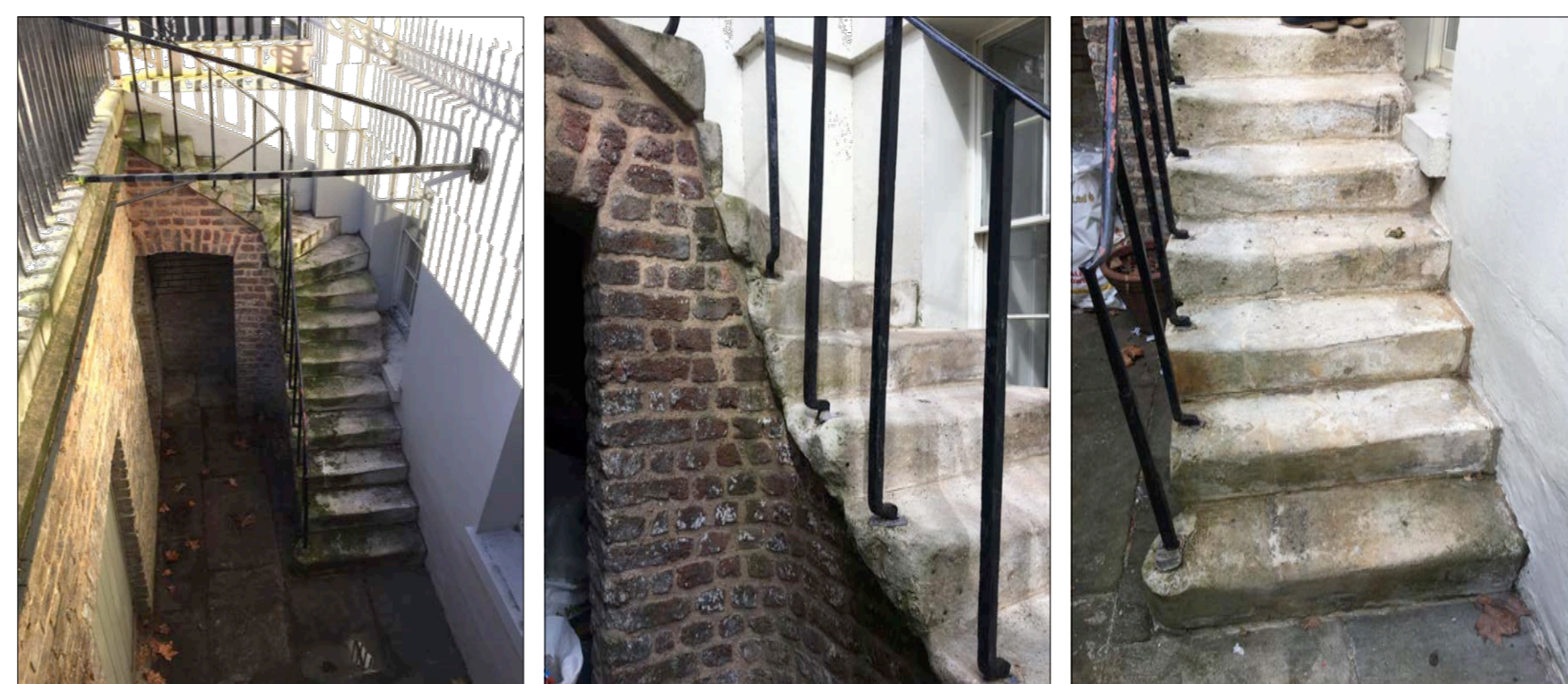
4 SECTION BB



5 SECTION CC



6 DETAIL SECTION OF TYPICAL TREAD



8 PHOTOGRAPHS OF No. 6 FITZROY SQ. LIGHTWELL STAIR

HC	ISSUED FOR PLANNING	21/06/2019	P0
DRAWN BY / REVISION		DATE	NO.

PLANNING	SCALE: 1:20 @A1
----------	-----------------

PROPOSED LIGHTWELL STAIR	750	P0
	SHEET NO.	REVISION.

33 FITZROY SQUARE LONDON W1T 6EU	262
	JOB NO.

TC
A

Thomas Croft Architects
Studio 117, Great Western Studios
65 Alfred Road
London, W2 5EU
United Kingdom

+44 (0)20 8962 0066
email@thomascroft.com
www.thomascroft.com