

01 Section A-A - Section through Canopy Pavilion

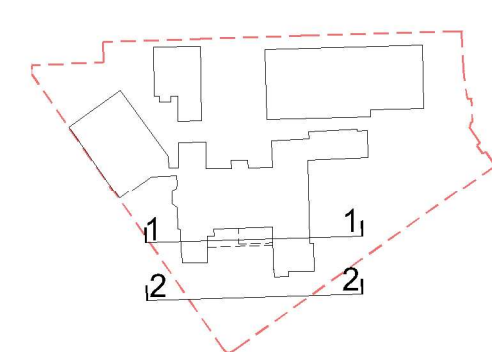


02 South Elevation - Entrance Pavilion

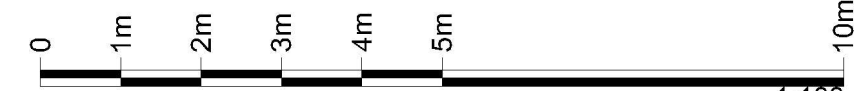
notes
Copyright : the copyright of this drawing is vested in Fraser Brown MacKenna Architects Ltd. It shall not be used without permission by anyone for any purpose. Do not scale drawings - use figured dimensions only. All dimensions to be verified and checked on site. Read the drawing in conjunction with all related drawings and specifications. Notify architect immediately of any discrepancy found therein.

- drawing notes
- Read in conjunction with GA plans, sections, elevations and specification documents.
 - See Material Schedule: '1044-B-20-05 Material Schedule

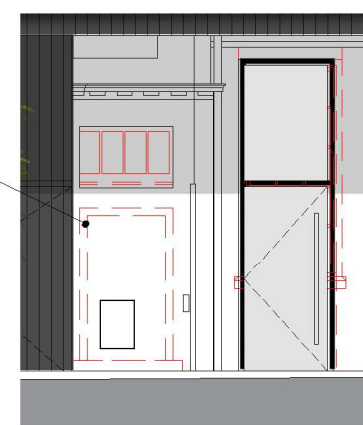
Section Key:



1:100



Openings
infilled



REV | BY | CHKD | DATE | AMENDMENT DETAILS

project
Maria Fidelis School
North Gower Street, Camden, NW1 2HR
client
LBC & LCR



FraserBrownMacKennaArchitects
15-19 Featherstone St. London EC1Y 8SL www.fbmacarchitects.com
T:020 7251 0543

drawing title
**PROPOSED WORKSPACE
South Elevation - Entrance Pavilion**

PLANNING

scale
1:100@A1
drawn by
KOR
checked by
FBM
date
© 12/04/2019

project
DRAWING NUMBER
1044 | P | 2011
status
revision