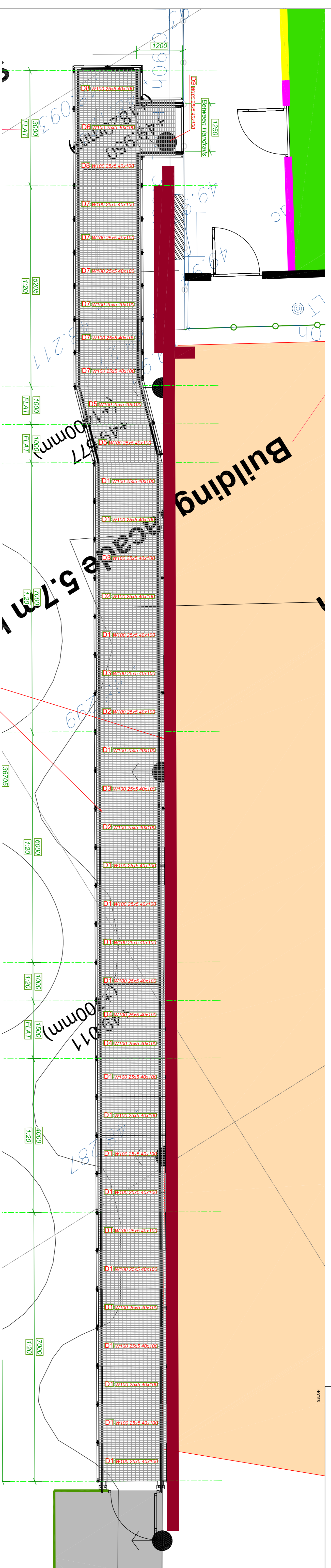


1 - DO NOT SCALE FROM DRAWING. ALL DIMENSIONS TO BE CHECKED ON SITE PRIOR TO COMMENCEMENT OF WORKS.
 2 - THIS DRAWING IS COPYRIGHT TO S & C SLATTER LTD AND SAFETY PLAN WHICH IS RETAINED IN THE SITE MANAGERS OFFICE.

HEALTH AND SAFETY NOTE

ALL PERSONNEL SHOULD BE AWARE OF THE HEALTH AND SAFETY PLAN WHICH IS RETAINED IN THE SITE MANAGERS OFFICE.

NOTES



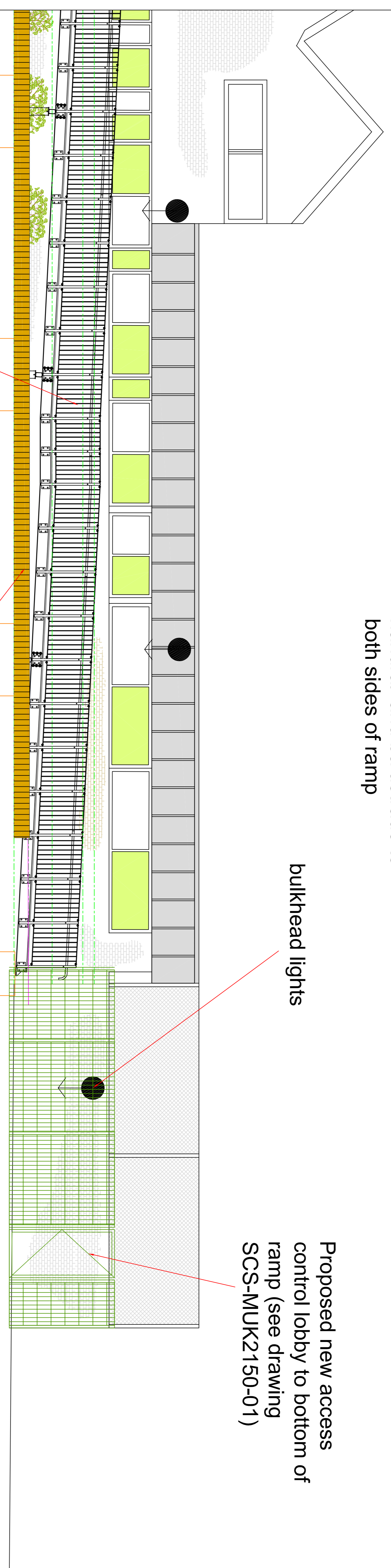
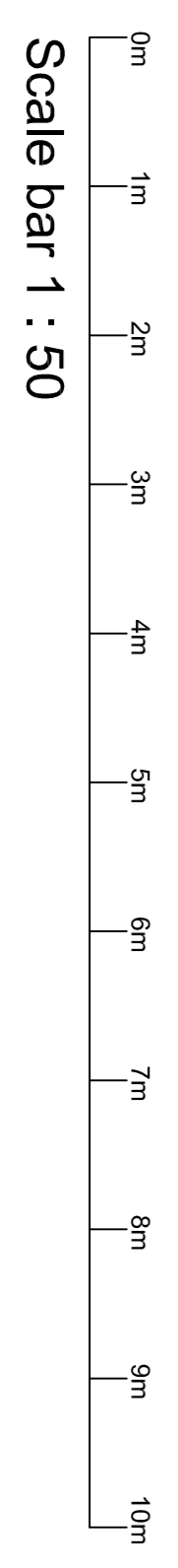
handrail and balustrade to both sides of ramp

bulkhead lights

Proposed new access control lobby to bottom of ramp (see drawing SCS-MUK2150-01)

handrail and balustrade to both sides of ramp

retain as much as possible timber roundal planting area and shrubs



Hill Cottage, Enborne, Newbury, Berkshire
 RG20 0HA
 Tel: 01635 34521 Fax: 01635 41024

PROJECT TITLE	PROJECT NUMBER
FLEET PRIMARY SCHOOL	MUK2150

PROPOSED RAMP PLAN & ELEVATION

DRAWING No	REV	SCALE
SCS-MUK2150-07	A	1:50
DRAWN BY	DATE	
NJM	28-05-19	
CHECKED BY	SIZE/PLUT	
AI		