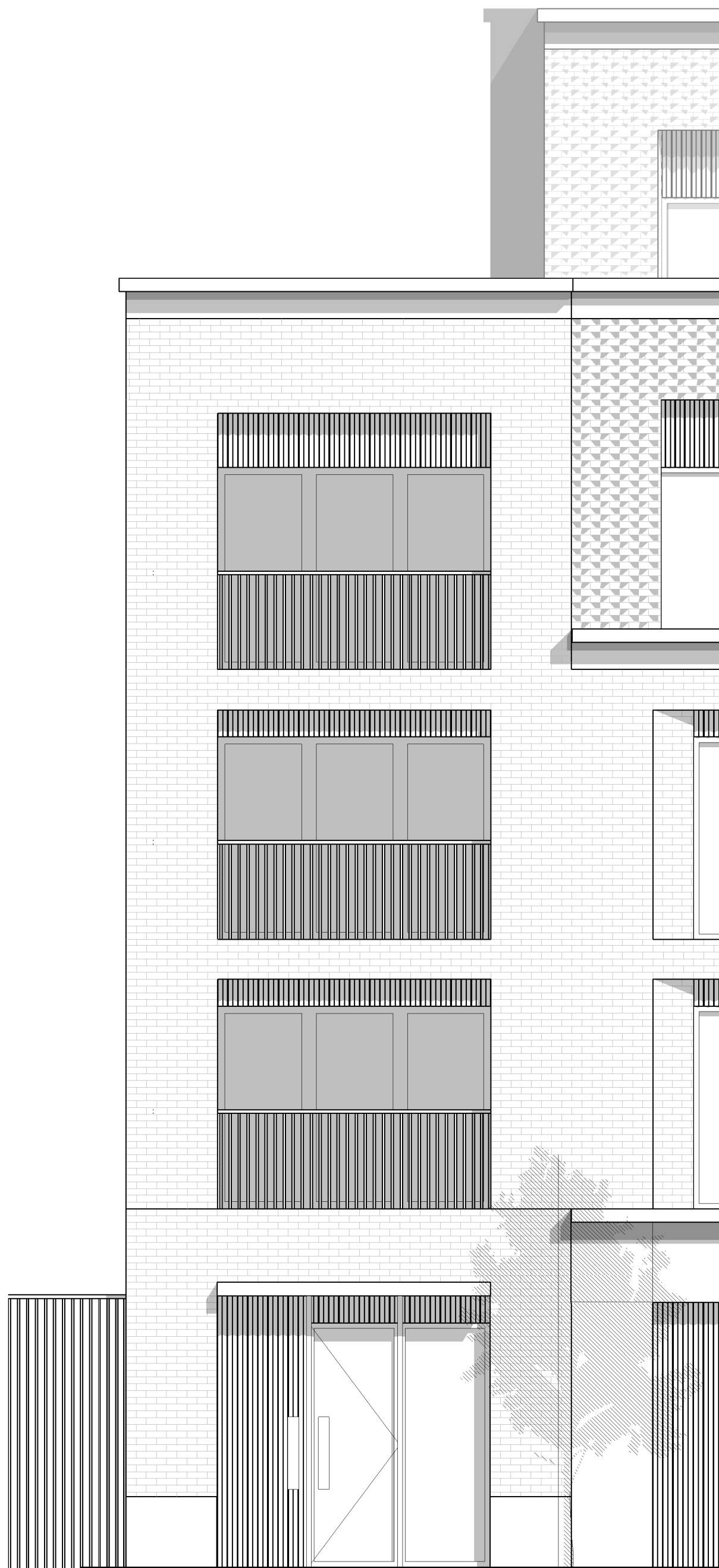


1  
21103  
RESIDENTIAL BLOCK SECTION THROUGH BALCONY  
1 : 50



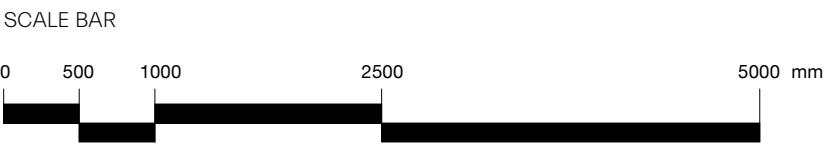
2  
21103  
RESIDENTIAL BLOCK DELANCEY STREET ELEVATION  
1 : 50



3  
21103  
DELANCEY STREET DETAIL ELEVATION  
1:50

- Coloured reconstituted stone parapet detail, colour matched to brick
- Stepped brick detail in setbacks
- Handlaid brick facade, laid in stretcher bond
- Chamfered window reveal
- Sage green metal window frame and brick sill, with fixed hotel window glazing
- Coloured reconstituted stone base with protruding concrete coping detail, colour matched to brick

revision	date	amendment
-	07.06.2019	PLANNING ISSUE



MORRIS+COMPANY

Unit 7, 16-24 Underwood Street, London N1 7JQ  
Tel: +44 (0)20 7566 7440 Fax: +44 (0)20 7014 3119  
www.morrisandcompany

- Do not scale from this drawing
- All dimensions to be checked on site by the Contractor
- And such dimensions to be their responsibility
- Report all drawing errors and omissions to the Architect
- All dimensions in millimeters unless noted otherwise
- If in doubt ask Contract Administrator

Job title 115-119 Camden High Street								
drawing title / location Delancey Street Residential Elevation Study								
status	Planning							
date	07/06/19							
scale	1 : 50 @ A1					1:40 @ A3		
project	originator	zone	level	type	role	number	status - revision	
A277	MCO	XX	ZZ	DR	A	21103	P01	