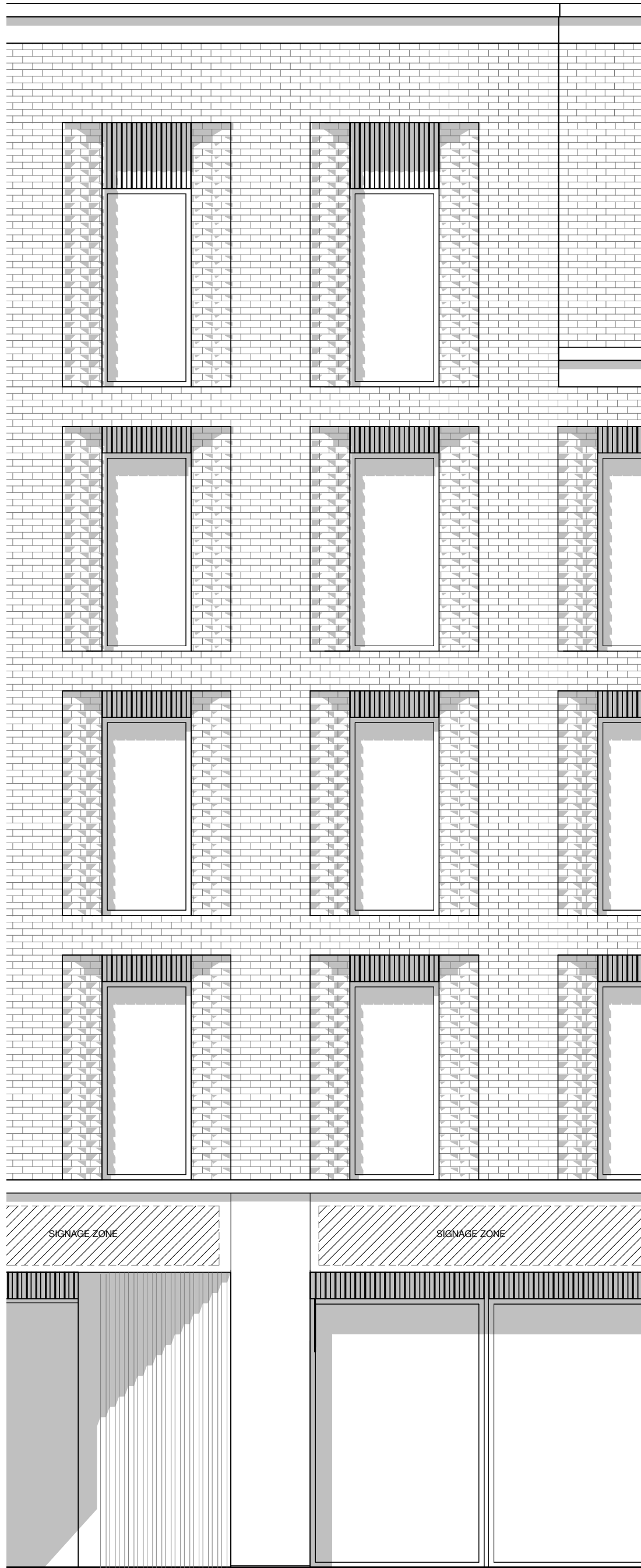
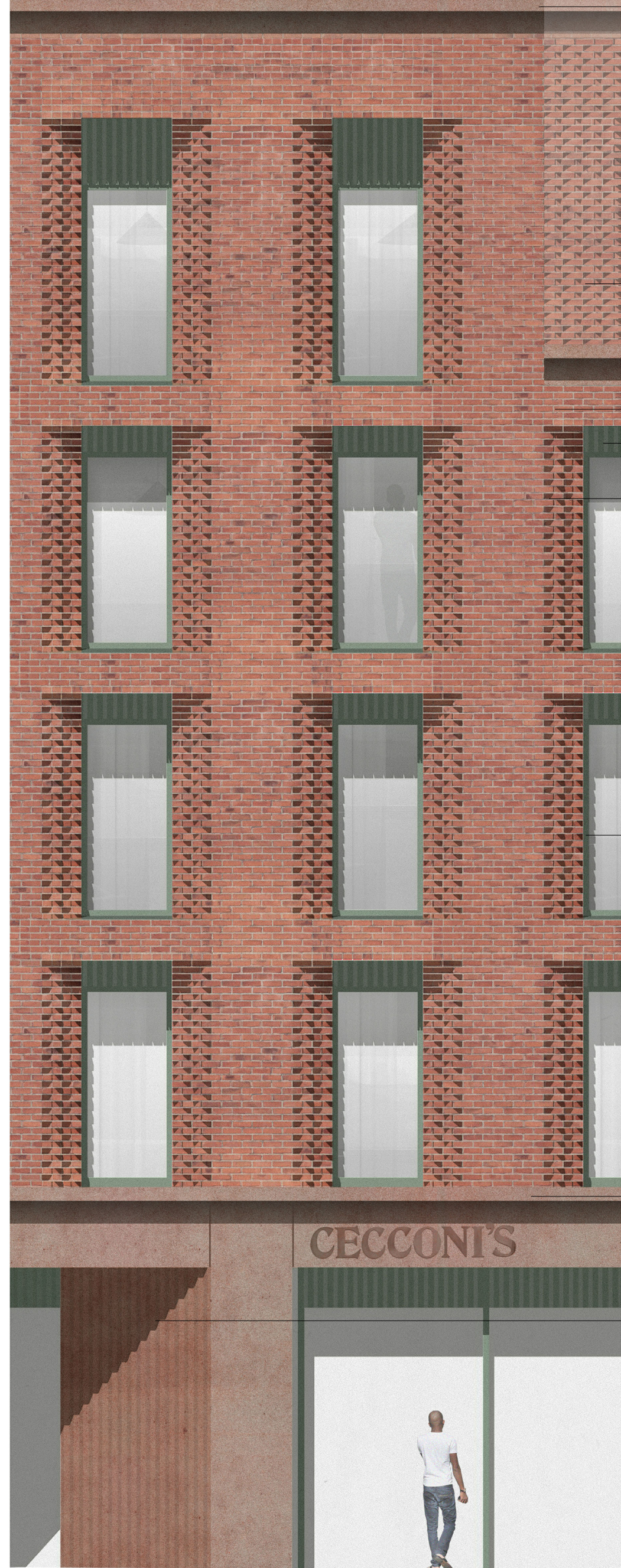


1  
21101 HOTEL BLOCK SECTION THROUGH RETAIL ENTRANCE  
1 : 50

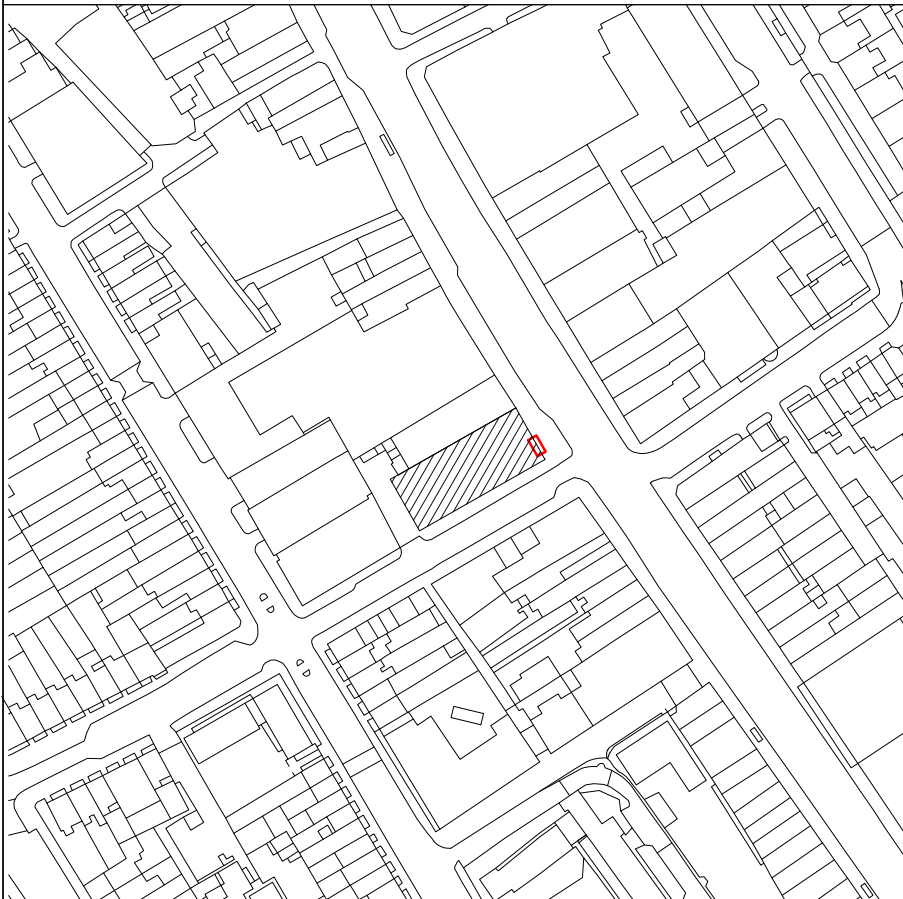
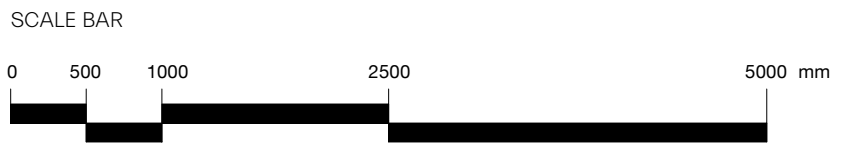


2  
21101 HOTEL BLOCK DELANCEY STREET ELEVATION  
1 : 50



3  
21101 CAMDEN HIGH STREET DETAIL ELEVATION  
1:50

- Coloured reconstituted stone parapet detail, colour matched to brick
- Stepped brick detail in setbacks
- Handlaid brick facade, laid in stretcher bond
- Sage green metal 'zig-zag' spandrel panel
- Window reveal with stepped brick detailing
- Sage green metal window frame and brick sill, with fixed hotel window glazing
- Coloured reconstituted stone base with protruding concrete coping detail, colour matched to brick
- Coloured reconstituted stone chamfered element with ribbed texture, colour matched to brick



**MORRIS+COMPANY**  
Unit 7, 16-24 Underwood Street, London N1 7JQ  
Tel: +44 (0)20 7566 7440 Fax: +44 (0)20 7014 3119  
[www.morrisandcompany.com](http://www.morrisandcompany.com)

- Do not scale from this drawing
- All dimensions to be checked on site by the Contractor
- And such dimensions to be their responsibility
- Report all drawing errors and omissions to the Architect
- All dimensions in millimeters unless noted otherwise
- If in doubt ask Contract Administrator

Job title							
115-119 Camden High Street							
drawing title / location							
Camden High Street Elevation Study							
status	Planning						
date	07/06/19						
scale	1 : 50 @ A1					1:100 @ A3	
project	originator	zone	level	type	role	number	status - revision
A277	MCO	XX	ZZ	DR	A	21101	P01