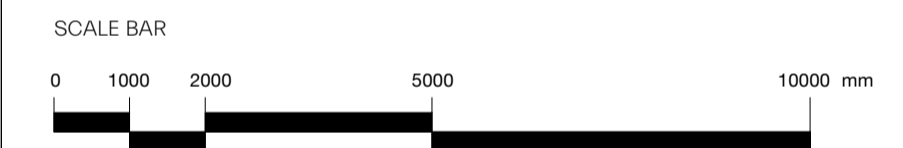


- KEY LEGEND
- 1 Stretcher bond Brickwork
 - 2 Brick Window Sill
 - 3 Fixed PPC aluminium windows
 - 4 Operable PPC aluminium windows with transom and fixed bottom panel
 - 5 Spandrel panel with perforated aluminium 'zig-zag' shaped corrugated panel coordinated with brick dimensions. Intake / exhaust for MVHR carried through it.
 - 6 Louvered doors with perforated aluminium 'zig-zag' shaped corrugated perforated panel
 - 7 Chamfered brick reveal with stepped brick detailing
 - 8 Chamfered brick reveal
 - 9 Stepped brick detail in setbacks
 - 10 Coloured reconstituted stone parapet detail, colour matched to brick
 - 11 Coloured reconstituted stone cladding with protruding concrete coping detail, colour matched to brick
 - 12 Coloured reconstituted stone cladding with ribbed texture, colour matched to brick
 - 13 Metal balustrade to residential balconies
 - 14 Roof plant
 - 15 New gate to Sign Makers Yard
 - 16 Signage area
 - 17 Boiler flue

| revision | date | amendment |
|----------|------------|----------------|
| - | 07.06.2019 | PLANNING ISSUE |



MORRIS+COMPANY
Unit 7, 16-24 Underwood Street, London N1 7JQ
Tel: +44 (0)20 7566 7440 Fax: +44 (0)20 7014 3119
www.morrisandcompany

- Do not scale from this drawing
- All dimensions to be checked on site by the Contractor
- And such dimensions to be their responsibility
- Report all drawing errors and omissions to the Architect
- All dimensions in millimeters unless noted otherwise
- If in doubt ask Contract Administrator

| | | | | | | | |
|----------------------------|--------------|------|-------|------|------|------------|-------------------|
| job title | | | | | | | |
| 115-119 Camden High Street | | | | | | | |
| drawing title / location | | | | | | | |
| Proposed West Elevation | | | | | | | |
| status | Planning | | | | | | |
| date | 07/06/19 | | | | | | |
| scale | 1 : 100 @ A1 | | | | | 1:200 @ A3 | |
| project | originator | zone | level | type | role | number | status - revision |
| A277 | MCO | XX | ZZ | DR | A | 01212 | P01 |